

SIMPLETaste

SIMPLETaste

SPHERE ICE MAKER

Quick Start Guide



1byone Products Inc.
1230 E Belmont Street, Ontario, CA, USA 91761
www.1byonebros.com



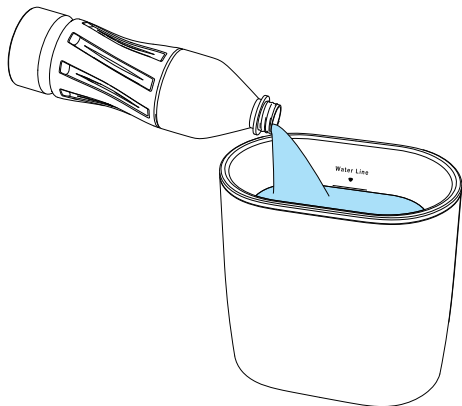
EN HOW TO USE

DE Note: The water container and the silicone mold are both BPA-free, however we suggest you wash them thoroughly before using them for the first time.

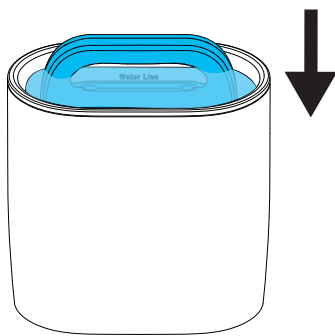
FR

ES BEFORE FREEZING:

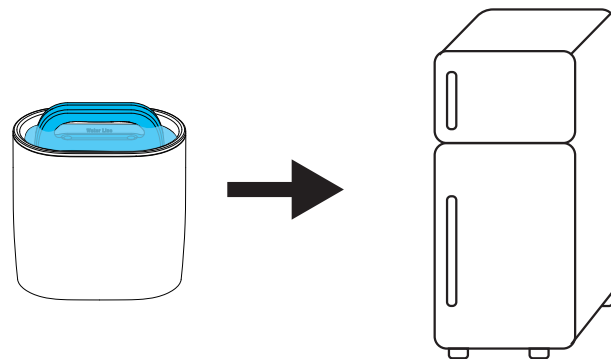
IT 1. Fill the container with warm water (around 120°F). Do not exceed the water line.



2. Place both mold halves together, ensuring they are aligned, and gently lower them into the container. Water should flow out from the top holes.

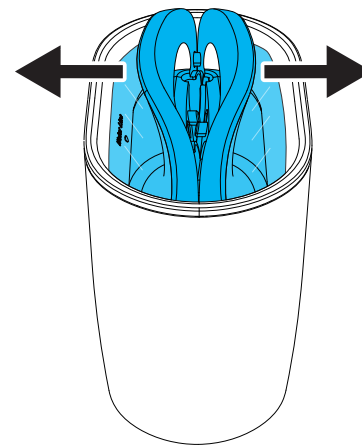


3. Place the ice maker upright in a freezer for 18-30 hours (freezer temperature: 0°F / -18°C). Time may vary based on specific freezer condition. For best results, avoid exceeding the maximum 30 hours.



AFTER FREEZING:

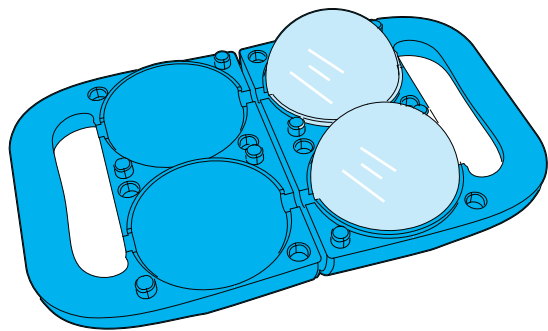
1. Pull apart both handles to break away excess ice on the surface of the silicone mold.



2. Grab the handle of the mold with one hand, then pull the silicone mold upwards out of the container.



3. Pull apart the mold halves and take the sphere ice out of the mold.



4. Excess ice in the container: It's not recommended to re-use the ice in the container as it will generate more bubbles in next pair of ice spheres. To take the excess ice from the container, we suggest you fill the container with warm water to melt and help dislodge it.

Tips & Tricks:

1. Water for making clear sphere ice: warm water (around 120°F), spring water, filtered tap water. (Do not use distilled water or purified water.)
2. Remove tips on the sphere: use the back of a butter knife, gently knock it off from the side of the sphere.

Specifications

Capacity: 940ml (Container) / 115ml*2 (Two ice spheres)

Dimensions: 168x105x186 mm

Weight: 690g

Sphere Diameter: 6 centimeters