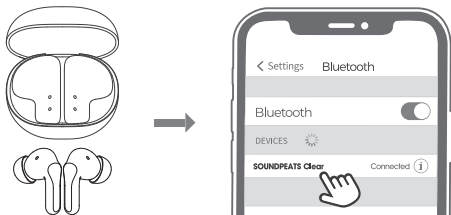


## Initial Setup



1. Open the charging case lid and remove the two earbuds. Peel off the insulation film from both earbuds. Place the earbuds back into the charging case, then take them out again. At this point, the left and right earbuds will automatically enter the TWS interconnection state. Once the interconnection is successful, both earbuds will enter pairing mode.
2. Activate the Bluetooth on your device, then select "SOUNDPEATS Clear" from the Bluetooth device list to complete the pairing process.

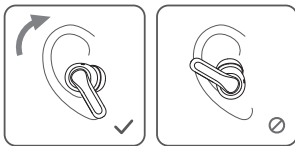
## Reset

With the earbuds inside the charging case and press and hold the charging case button for 10 seconds until the charging case indicator light flashes white and red twice. The reset process is complete.

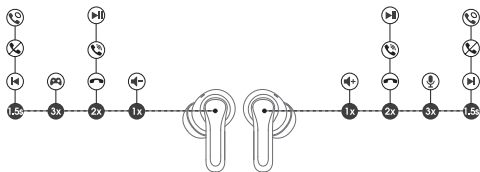


## Wearing

1. Identify left and right earphones.
2. Rotate the headset and find the most comfortable position.



## Product Diagram



## Control

Power On	Automatic: Open the charging case lid and remove the two earbuds Manual: Long press the touch button for 1.5s
Power Off	Automatic: Put the earbuds back into the charging case and close the lid Manual: Long press the touch button for 10s
Play / Pause	Double tap the touch button
Volume-	Single tap the left touch button
Volume +	Single tap the right touch button
The next track	Long press the right touch button for 1.5s
The previous track	Long press the left touch button for 1.5s
Answer/Hang up phone call	Double tap the touch button
Reject phone call	Long press the touch button for 1.5s
Switch between two calls	Long press the touch button for 1.5s
Enter pairing mode manually	Long press the touch button for 6s
Activate voice assistant	Triple tap the right touch button
Enter game mode	Triple tap the left touch button

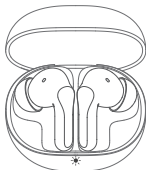
## Q1: What does the indicator light of the charging case display?

### 1. Charging Case Battery Indicator:

100%—50%	Green
49%-10%	Yellow
<10%	Red

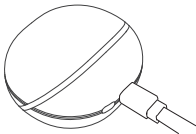
### 2. Charging Case Indicator while Charging:

<10%	The Red light flashes slowly
11%-49%	The Yellow light flashes slowly
50%-99%	The Green light flashes slowly
100%	The Green light stays on



**Q2: How to charge the charging case?**

1. Connect the Type-C charging adapter to charge it (charging current does not exceed 1A).
2. When not in use for a long time, charge it at least once every three months.

**Q3: Why is the earbude still connected to the phone after putting it back into the charging case and closing the lid?**

1. The charging case has no power remaining. When the charging box is out of power, the earphones cannot be turned off when they are put back.
2. Please make sure that the earphones are correctly placed in the charging box, and the charging metal sheet and PIN are clean. Please try to clean the charging contact between the charging box and the earphones with a soft cloth.