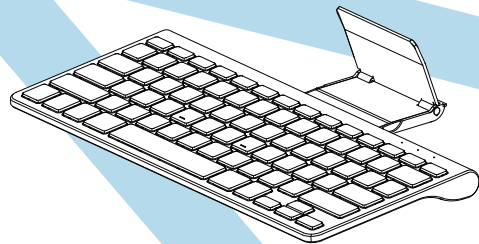


OMOTON

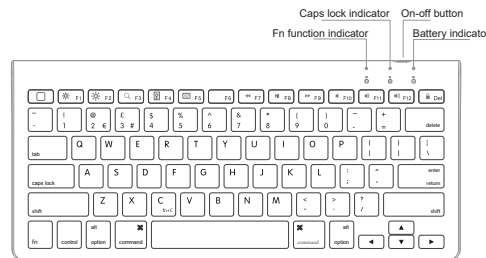
Wireless Keyboard



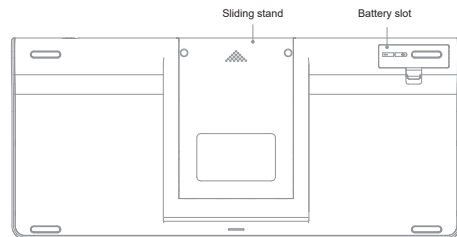
User Manual

KB088

Keyboard Features



(Front)



(Back)

Please read the instructions carefully before using the keyboard.

EN

The package includes:

- 1 x Keyboard
- 1 x User Manual

Hot Keys Functions





Attention: the keyboard is compatible only with iOS systems.

How to pair the keyboard with your device

1. Insert 2 x AAA batteries in the battery insert slot. Turn on keyboard with on-off button. The blue, battery indicator light will flash for a few moments. Press the keys Fn + C to enable connection mode. The battery indicator will start flashing.
2. Enable your device's Bluetooth in Settings. Find the correct, corresponding Bluetooth Keyboard signal and connect. When the connection is successful, the indicator will stop flashing.

LED Indicators

 Caps lock indicator	When this indicator is on, it means Caps lock is active.
 Battery indicator	<ul style="list-style-type: none">• When the keyboard is turned on, this indicator will flash• When you press Fn + C, a blue light will start flashing to indicate connectivity.• When the battery is low, a red light will flash, indicating that it's time to change the keyboard batteries.

EN

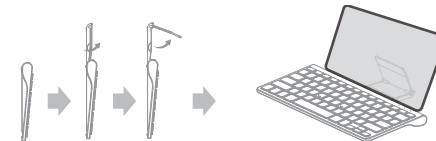
How to use the stand

1. Slide the stand out until its fully extended.
2. Open up the stand so it's mouth is facing the back of your device.
3. Place device on stand.

Note: Do not use excessive force when using the stand. This can result in damaging or breaking the stand.



(Back)



(Side)

Attention:

1. Keep the stand closed when not in use to avoid damage.
2. Turn off the keyboard when not in use to conserve energy.
3. Never apply liquids directly on the keyboard; clean the keyboard with a cleaning cloth dampened with alcohol or an antibacterial liquid.

Energy-saving mode

After ten minutes of inactivity, your keyboard will automatically enter sleep mode. To continue using the keyboard, press any key and wait for 2-3 seconds. Your keyboard will reconnect automatically.

EN

Warning

1. Keep device away from sharp objects.
2. Keep device away from radioactive material and microwaves.
3. Do not put heavy objects on device.
4. Handle device with care.
5. Keep device away from oils, fluids, and other chemicals.

Troubleshooting

1. Make sure the keyboard is on.
2. Make sure the keyboard is within the operating range.
3. Make sure the battery level is sufficient.
4. Make sure Bluetooth is turned on.
5. Make sure the devices are paired.

Specifications

1. Operating range: <33ft/ 10m
2. Operation current: <2.5mA
3. Voltage: 3.0V- 4.2V
4. Working temperature: -10 to + 55 °C
5. Standby current: <0.3 mA
6. Sleep mode current: <40uA
7. Keyboard lifespan: 3 million clicks

EN

Search "OMOTON" on Amazon for more products



Contact us:

Do you have any question about our products?
Please contact us at the email address below.
Our team will reply to you within 24 hours.Thank you!

Web: www.omoton.com

E-mail: service@omoton.com

Made in China
11413.00.007632