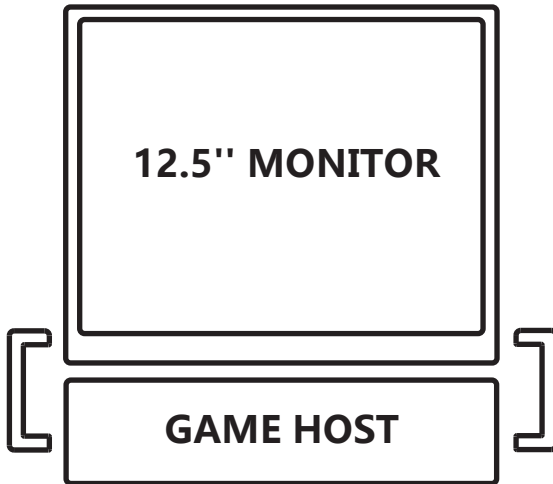


# DEPGI

## USER'S MANUAL FOR LED MONITOR

---

20220217 V1.0



## TABLE OF CONTENTS

Safety Precautions	E-2
Content of the Package	E-3
Remote Control	E-6
OSD Menu	E-7
Specification	E-8
Environmental Precautions	E-8
Troubleshooting	E-8

## SAFETY PRECAUTIONS

- Do not modify or tamper with this monitor.
- Do not pull roughly or bend the cable.
- Keep away from dusty or humid areas.
- Do not get wet.
- Avoid touching the External Input Terminal. Prolonged exposure can cause burns.

---

### Caution


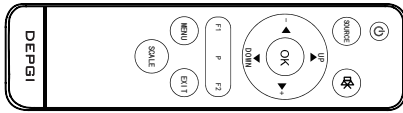
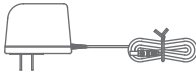



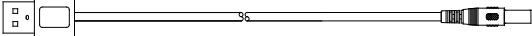
---

- Make sure the monitor is turned off and disconnected before mounting.
- Only use designated cables.
- Do not twist the cable.
- Do not place on unstable surface.
- When maintaining the monitor, make sure power off .
- When transporting, make sure power off.
- When not in use for an extended period of time, make sure power off.
- Avoid places of direct sunlight during storage.
- Do not place anything on top of the monitor.
- Do not abuse or misuse this product by applying unnecessary force.
- Keep away from children.
- High volume for an extended period of time may result in hearing loss.
- Before using this monitor please read the instructions carefully.
- Avoid damaging the LCD screen by strong press.
- Dispose in accordance with local and national disposal regulations (if any).
- Clean only with a dry or slightly damp cloth. Using cleaning solutions or attempting to clean connectors may damage this product.

# INSTALLATION

## Package

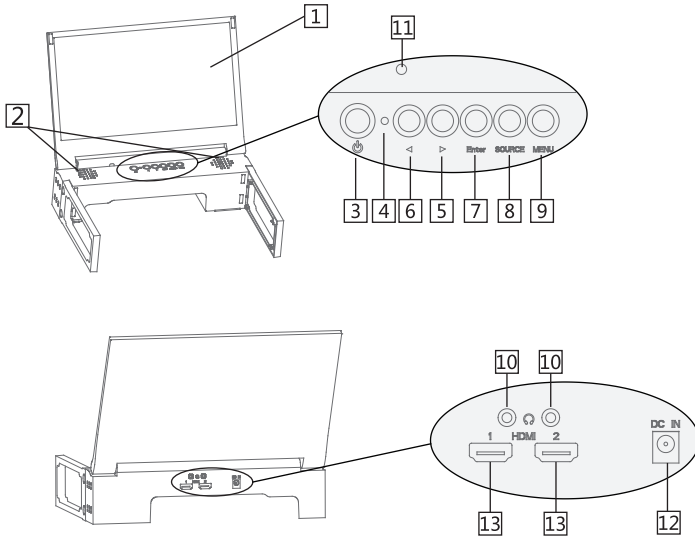
Before unpacking your monitor, please make sure that your desktop is stable, clean and close to your game console and power source.

	ED125S Series Models	
Montior x1		
Remote x1		
Adapter(12V/2A) x1 ( DE125SK comes standard )		
HDMI Cable x1		
User Manual x1		
Adapter(5V/3A) & USB to DC Cable x1 ( DE125SF comes standard )		

\* All the pictures in this manual are for reference only. The detailed information is subject to the final product you receive. We have the right to update our products without prior notice.

# INSTALLATION

## DE125S Series Models



### Description of Functions

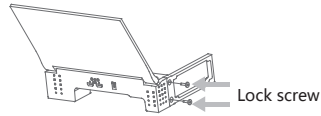
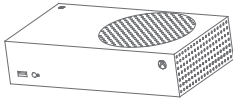
- |  |   |
|--|---|
| <b>1</b> SCREEN<br>Monitor screen.   | <b>8</b> SOURCE<br>Signal source.   |
| <b>2</b> SPEAKER<br>Stereo speaker.  | <b>9</b> MENU<br>Bring up OSD menu & exit current function.                           |
| <b>3</b><br>Power button.  | <b>10</b> EARPHONE JACK<br>Dual 3.5mm stereo earphone jacks.                          |
| <b>4</b> LED LIGHT<br>Description of the state of the monitor:<br>Green: Working<br>Orange: Standby<br>Original: Power off | <b>11</b> IR RECEIVER<br>Receive remote control signal.                               |
| <b>5</b><br>Select right/up & Volume up.   | <b>12</b> POWER INPUT PORT<br>Power supply: DC 5V~12V.                                |
| <b>6</b><br>Select left/down & Volume down.  | <b>13</b> SIGNAL INPUT PORT<br>HDMI port.   |
| <b>7</b> ENTER<br>OSD function confirmation and enter the lower menu.  | <b>14</b> COOLING FANS(only for some models)<br>Prevent the monitor from overheating. |

\* All the pictures in this manual are for reference only. The detailed information is subject to the final product you receive. We have the right to update our products without prior notice.

# INSTALLATION

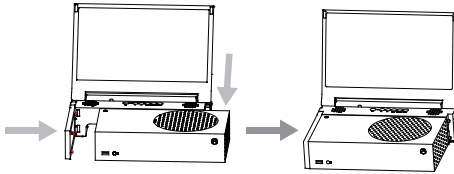
## 1. Align the monitor with the game console.

- ① Place the console flat on the table.
- ② Take out the monitor and lock the side bezel according to the figure below.

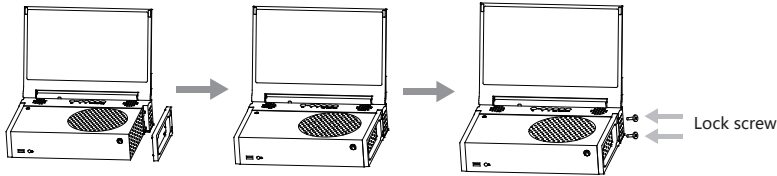


## 2. Install the monitor on the game console.

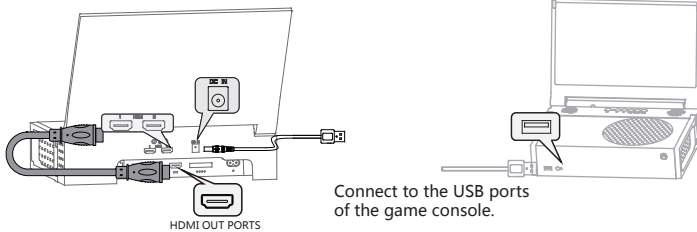
- ① Place the direction of the monitor button arrow on the back of the game console.



- ② Place the bezel on the other side of the monitor and lock the fixing screws in the direction shown in the figure below.



## Connecting .



- ① Connect the HDMI port of the monitor & the game console with the HDMI cable.
- ② Connect the DC port of the USB-DC cable to the monitor, and connect the USB port to the game console.

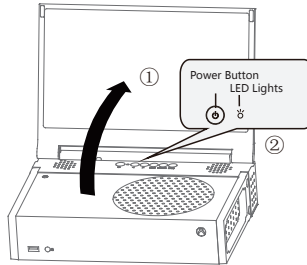
### Note:

- ① Because the maximum power supply current of the USB port of the console is 2A. If you want to use this function, you must reduce the power of the monitor: adjust the brightness to 30% or less, and adjust the volume to less than 50%.
- ② When using this function, if the monitor restarts repeatedly, please use the standard adapter or the common adapter above 5V / 4A.

\* All the pictures in this manual are for reference only. The detailed information is subject to the final product you receive. We have the right to update our products without prior notice.

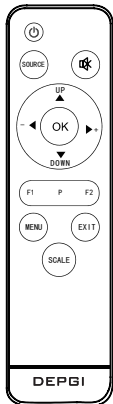
# INSTALLATION

## Power On



- ① Lift up the monitor screen.
- ② Press the power button on the monitor.  
(If the monitor was turned off automatically last time, it will be turned on automatically after the power is connected. If the monitor was turned off by pressing the power button last time, it needs to be turned on by pressing the power button this time.)
- ③ Turn on the game console.

## REMOTE CONTROL



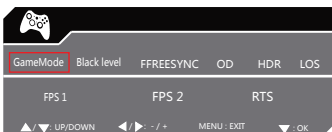
- |  |  |  |                              |
|--|--|--|------------------------------|
|  | Power button                                       |  | Volume up & Select right     |
|  | Select signal source                               |  | Enter                        |
|  | volume mute  |  | Select OSD                   |
|  | Screen scale adjustment                            |  | Exit                         |
|  | Select up<br>(Game mode small menu shortcut)       |  | Low blue light mode shortcut |
|  | Select down<br>(Game plus Function " + " shortcut) |  | Display mode shortcut        |
|  | Volume down & Select left                          |  | OD acceleration shortcut     |

\* All the pictures in this manual are for reference only. The detailed information is subject to the final product you receive. We have the right to update our products without prior notice.

## The main menu

MENU	SUB MENU	OPTION	FUNCTION
Quick Setup	Backlight	0 ~ 100	Quick setup option is to separate common option function, in order to use Save debugging time
	Contrast	0 ~ 100	
	Volume	0 ~ 100	
	Temperature	CUSTOM/Warm/Cool/...	
Picture Setup	Backlight	0 ~ 100	Adjust the brightness of the display.
	Contrast	0 ~ 100	Adjust the contrast of the display.
	Sharpness	0 ~ 4	Adjust the clarity of color edges in the picture.
	Black Level	0 ~ 100	Adjust dark field effect of the picture.
	DCR	ON/OFF	Open or close the dynamic contrast ratio function.
	ECO	STANDARD/TEXT/MOVIE/...	Select the display mode of the screen.
	Low BLUE Light	ON/OFF	Automatic filter blu-ray composition in the backlight
	Noise Reduction	ON/OFF	Adjust Image noise.
	Temperature	CUSTOM/Warm/Cool /...	Adjust the base color of the screen.
	GAMMA	1.8/2.0/2.2/2.4	Adjust image GAMMA value.
	HUE	0 ~ 100	Adjust integrated color of the image.
	Saturation	0 ~ 100	Adjust the color intensity of the picture.
	Six Color	RED_HUE/GREEN_HUE/...	Adjust the image by regulating six basic color.
Image Ration	AUTO/WIDE/16:9/4:3/1:1	Select the display scale mode of the screen.	
Sound Setup	Volume	0 ~ 100	Adjust the volume of the monitor.
	Ttele	-50 ~ +50	Adjust the high-frequency gain of the speaker sound.
	Bass	-50 ~ +50	Adjust the low-frequency gain of the Speaker sound.
	Balance	-50 ~ +50	Adjust the sound output of the left and right speakers.
	Mute	ON/OFF	Turn on/off sound output.
General Setup	Signal Source	HDMI 1/HDMI 2	Select your desired input source among HDMI 1 and HDMI 2.
	FREESYNC	ON/OFF	Open or close the free Sync function. Note : This function requires supporting signal source support.
	OD	ON/OFF	Open or close the over drive of the monitor among.
	HDR	OFF/AUTO/2084	TURN ON/ OFF HDR Function. Note : This function requires supporting signal source support.
	Sleep Mode	OFF/10s/20s30s/40s/...	Close or set display automatic shutdown time
	Language	English/...	Select your desired language from the OSD menu.
	OSD Transparency	0 ~ 100	Adjust the transparency of the OSD menu.
	OSD Timeout	0 ~ 60	Adjust the OSD display time.
	Reset		Press to restore factory settings.

## Game mode Quick Adjustment



Press the "UP" button on the remote control to display this menu.  
The options in this menu are commonly used by users when playing games.

### Note:

1. According to different input signals, the available functions maybe not the same.
2. Some items are disabled in gray when they are unavailable in a certain mode. Those items are enabled when corresponding modes are activated.

## SPECIFICATION

Model No	DE125SK	DE125SF
Screen Size	12.5"	12.5"
Resolution ( RGB)	3840×2160	1920×1080
Frame Period	3840 x 2160@60Hz 1920 x 1080@120Hz	1920 x 1080@60Hz
Response Time	8~25ms	8~25ms
Active Area(mm)	344.2 × 193.6	344.2 × 193.6
The most powerful	< 24W	< 12W
Standby power	< 0.5W	
Product Size ( mm )	295.9x207.8x75.5mm	
The product weight	0.72KG	
Basic skills	HDR / FREESYNC / OD	
Input / Output	HDMI x 2, DC IN x 1, HEADPHONE PORT x 2	
Speaker power	3.0W x 2	

## ENVIRONMENTAL PRECAUTIONS

Operating	Temperature : 5°C~40°C
	Humidity : 20%RH~85%RH(Non-Condensing)
Store	Temperature : -20°C~60°C
	Humidity : 10%RH~85%RH(Non-Condensing)

## TROUBLESHOOTING

Problem	Reason	Solution
The logo appears repeatedly when power on.	Insufficient power supply.	The power supply voltage of the display is 5~12V. The current of the low voltage adapter is generally up to 3A, which will lead to insufficient current. So please use our original 12V / 2A adapter.
No screen image	LED Light is not on	Please use the remote to turn on the monitor/Press the power button on the monitor.
	Orange LED light	The monitor has not received the signal, please reconnect the cable.
	Green LED light	The monitor can't recognize the signal, please reconnect the cable.
The screen flashes and blurs	Open the OSD menu of your console to confirm whether the resolution and refresh rate is beyond the specified range of the monitor screen.	Adjust the resolution and refresh rate of your console.
	Partial flash	Please confirm whether the signal has poor contact.
Abnormal volume	With image but without sound	Please confirm whether the mute function is on. Please confirm whether the headphone is connected to the headphone jack.
	There is sound on one side	Please confirm the selection of left and right channels on the signal source. Please confirm the selection of the left and right channels on the OSD menu.

Authorized by : VILSUN(H.K.)LIMITED

Manufacturer : Dong Guan City Vilsun Electronics Co.,Ltd

Address : Jingfu West , Zhengqiangda Technical Industrial Park, Dalang, Dongguan, China