

SAFETY WARNINGS

Please read all the instructions.

- DO NOT use this device for any purpose other than outlined in this manual.
- DO NOT disassemble/modify the device. There are no user-serviceable parts inside.
- DO NOT subject the device to extreme conditions: extreme temperatures beyond operating temperatures, high vibrations, dusty areas, humid conditions (including any liquid) or direct sunlight.
- DO NOT use excessive force on the tape or the gear. Stretching the tape or grinding the gear can damage the device permanently.
- DO NOT fold or twist the tape. This can damage the tape permanently.
- DO NOT use excessive force to pull the tape over 150cm/60inch. This may permanently damage the device.
- Be very careful when measuring neck circumference. The tape may accidentally cause choking.
- Children under 10 years old should use under adult supervision.



01

FCC REGULATORY COMPLIANCE

This device complies with part 15 of the FCC Rules. Operation is subject to the following two conditions: (1) This device may not cause harmful interference, and (2) this device must accept any interference received, including interference that may cause undesired operation.

Warning: changes or modifications not expressly approved by the party responsible for compliance could void the user's authority to operate the equipment.

Note: This equipment has been tested and found to comply with the limits for a Class B digital device, pursuant to Part 15 of the FCC Rules. These limits are designed to provide reasonable protection against harmful interference in a residential installation. This equipment generates, uses and can radiate radio frequency energy and, if not installed and used in accordance with the instructions, may cause harmful interference to radio communications.

However, there is no guarantee that interference will not occur in a particular installation.

If this equipment does cause harmful interference to radio or television reception, which can be determined by turning the equipment off and on, the user is encouraged to try to correct the interference by one or more of the following measures:

- Reorient or relocate the receiving antenna.
- Increase the separation between the equipment and receiver.
- Connect the equipment into an outlet on a circuit different from that to which the receiver is connected.
- Consult the dealer or an experienced radio/TV technician for help.

RF Exposure Compliance

This equipment complies with FCC radiation exposure limits set forth for an uncontrolled environment. This transmitter must not be co-located or operating in conjunction with any other antenna or transmitter.

ISED Regulatory compliance

This device contains licence-exempt transmitters that comply with Innovation, Science and Economic Development Canada's licence-exempt RSS(s).

Operation is subject to the following two conditions:

- (1) This device may not cause interference.
- (2) This device must accept any interference, including interference that may cause undesired operation of the device.

Le présent appareil est conforme aux CNR d'Industrie Canada applicables aux appareils radio exempts de licence. L'exploitation est autorisée aux deux conditions suivantes:

- (1) L'appareil ne doit pas produire de brouillage, et
- (2) l'utilisateur de l'appareil doit accepter tout brouillage radioélectrique subi, même si le brouillage est susceptible d'en compromettre le fonctionnement.

This equipment complies with IC RSS-102 radiation exposure limits set forth for an uncontrolled environment. Cet équipement est conforme aux limites d'exposition aux radiations IC CNR-102 établies pour un environnement non contrôlé.

PREFACE

Thank you for choosing RENPHO Smart Body Tape! This Bluetooth body tape measure is your personal health assistant. It helps you easily measure various parts of the body and keep track to improve your health and fitness. We sincerely hope that you enjoy using your RENPHO Smart Body Tape!

SPECIFICATIONS

| | |
|---------------------|------------------------|
| Model | RF-BMF01 |
| Mode | length / circumference |
| Unit | cm / in |
| Size | 58mm × 71mm |
| Measuring Range | 150cm / 60in |
| Resolution | 1mm, 1/16 in |
| Accuracy | ±3mm, ±3/32in |
| Working Temperature | 32°F ~ 122°F |
| Working Humidity | ≤85% |
| Battery | CR2032 |
| Stand-by current | 1uA |
| Working current | 2mA |

03


PACKAGE CONTENTS

- 1 x Smart Tape Measure
- 1 x CR2032 Battery
- 1 x User Manual

TROUBLE SHOOTING

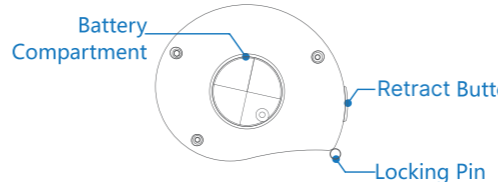
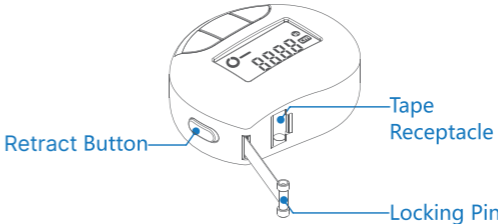
| Problem | Possible Cause | Solution |
|--|--|--|
| The display shows nothing or the measurement is blurry | Lower voltage, no battery or incorrect installation of battery | Reinstall or replace the battery |
| Erratic display | Casual malfunction caused by high vibration or strong swing | Zero setting |
| Jumping number or frozen display | Internal error | Remove the battery, wait 1min and reinstall it |

NOTE:

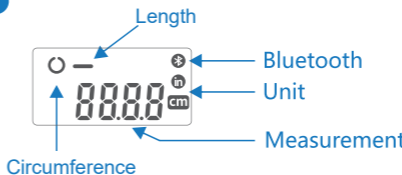
If the tape display shows nothing after pressing , please replace the battery.

04

APPEARANCE

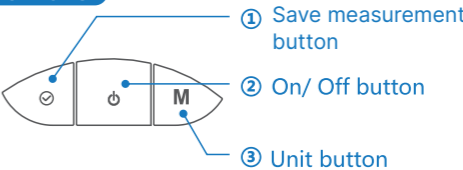


ICONS

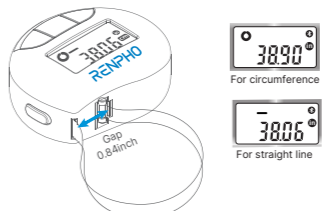


05

BUTTONS



- Short press to confirm the measurement and send to the app via Bluetooth
Long press to zero the measurement
- Short press to power on
Long press to power off
- Short press to switch between inch and centimeter
Long press to switch between length and circumference



NOTE:

The gap between the circumference and length measurement is 2.1cm / 0.84in, since the tape needs to be inserted into the tape receptacle while measuring the circumference.

06

RENPHO

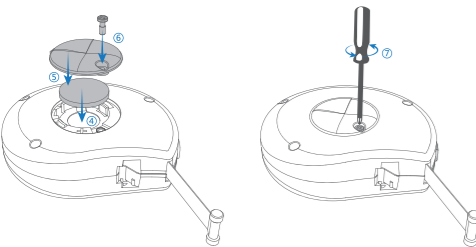
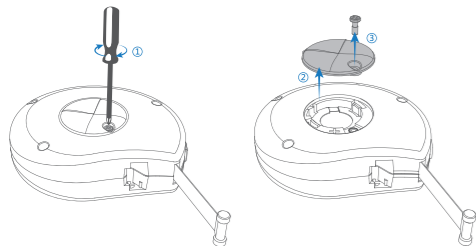
US Importer: JOICOM CORPORATION
14129 The Merge Street, Building 3 Unit A, Eastvale, CA 92880
Manufacturer: Shenzhen Ruiyi Business Technology Co., Ltd.
Qianhai Complex A201, Qianwan Road 1, Qianhai
Shenzhen-Hong Kong Cooperation Zone, Shenzhen, 518000
P.R.China

*Please have your order number ready before contacting customer support.

Made in China

NA2

INSTALL THE BATTERY



07

- Use a screwdriver (not included) to loosen the screw, then remove the cover.
- Insert the battery and ensure the positive pole is facing up.
- Align the battery cover with the opening and securely tighten the screw.

GETTING STARTED

Scan the QR code to download and install the Renpho Health App on your smartphone.



Note:

Due to continuing updates and improvements, the "Renpho Health" App may appear slightly different.

08

Connect with Renpho Health App

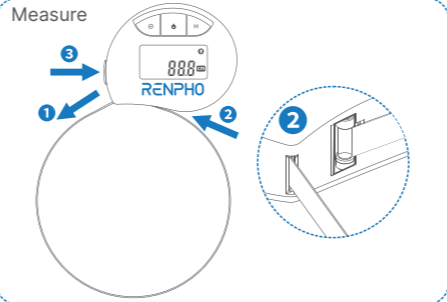


Short press “  ” button to turn the tape on.

If the Bluetooth icon keeps flashing, it means that Bluetooth is not connected.

- Turn on Bluetooth on your phone and open the Renpho Health App.
- Turn on the tape and tap “Pair” on the app to connect the tape with the app.
- The Bluetooth icon will be bright after successful app connection.

09

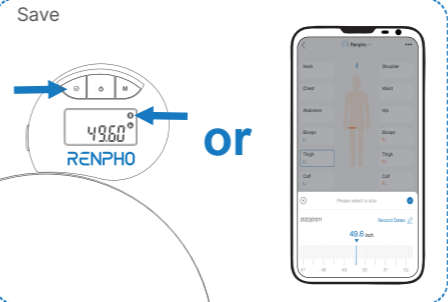




- Pull the tape and wrap it around the body part.
- Insert the locking pin into the tape receptacle.
- Press and hold the retract button until the tape has fully retracted around the body part.

NOTE:

- DO NOT** retract too fast when retracting the tape as it may hurt you.
- DO NOT** use excessive force to pull the tape (over 1m/39.4inch per second). This may cause inaccurate readings.

10



- Tap the body part name (e.g. Waist) to sync data.
- Choose the date.
- Press  on the tape or tap  on the app to confirm the measurement.
- Tap "Save" to save the data.

11

WARRANTY POLICY

Your RENPHO product purchase is covered by a one-year limited manufacturer warranty from the date of delivery.

For warranty terms and conditions, please visit:
<https://renpho.com/pages/warranty-terms-and-conditions>

Note: Product registration is not required for the warranty. If you choose not to register your product, it will not diminish the product warranty.

CUSTOMER SERVICE

Please feel free to contact us if you have any questions or concerns. RENPHO Customer Service Team guarantees a quick response and hassle-free solutions to any issue you may have within business hours.

TEL: +1(844) 417 0149 (US ONLY)
Monday-Friday 9:00AM-4:30PM
+44(0)7434 666088 (UK ONLY)
Monday-Friday 9:00AM-5:00PM (GMT)
Email: support@renpho.com (US&CA)
support-eu@renpho.com (UK&EU)

*For defective products or the return of items, please contact us with your order number within the specified warranty period. DO NOT dispose of any product parts as they may be required for inspection/repair.

Notice:

This marking indicates that this product should not be disposed with other household wastes throughout the EU. To prevent possible harm to the environment or human health from uncontrolled waste disposal, recycle it responsibly to promote the sustainable reuse of material resources. To return your used device, please use the return and collection systems or contact the retailer where the product was purchased. They can take this product for environmental safe recycling.

12

RENPHO

Smart Health Simplified

Smart Tape Measure



Model: RF-BMF01

User Manual