

Vimin

2.5G Web Smart Ethernet Switch

User Manual

Content

English	-----	1
Deutsch	-----	3
Français	-----	5
Español	-----	7
Italiano	-----	9

English

Logging on to the equipment

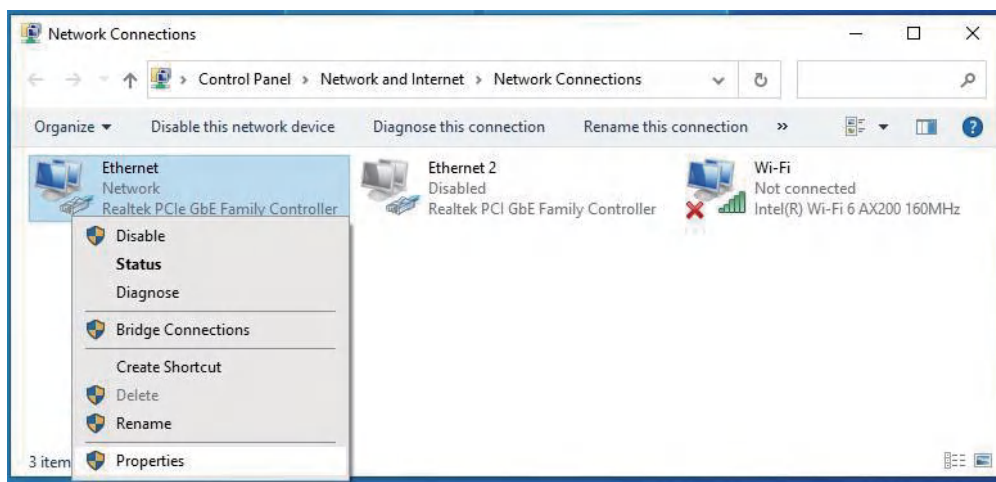
- Connect the RJ-45 interface cable of a switch with a computer using a network cable.



- Set the TCP/IP properties of the computer.

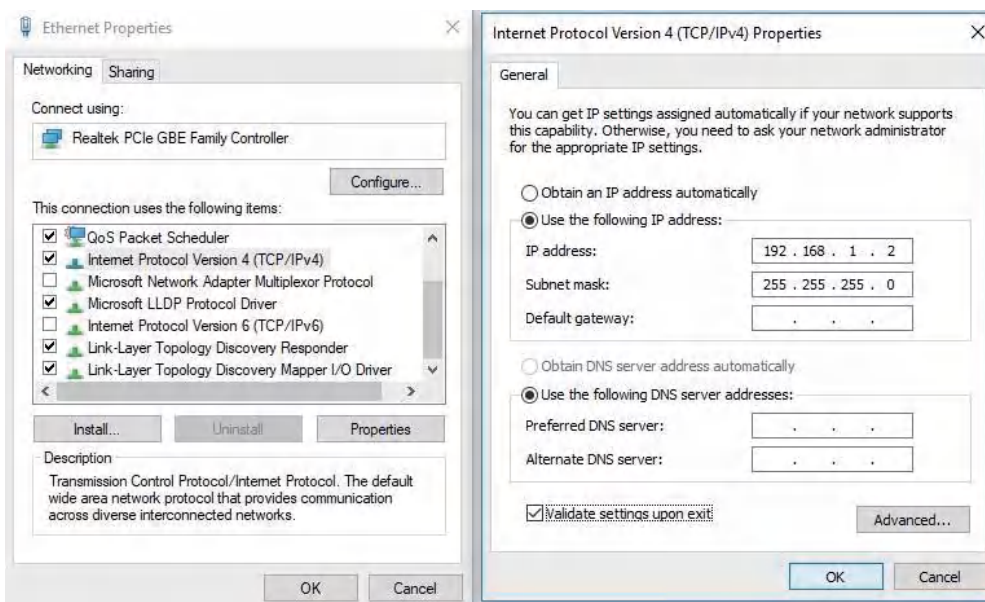
■ Windows

1. Click Start—> Control Panel—> Network and Internet—> Network and Sharing Center—> Change adapter settings, right click Local connection and select Properties.

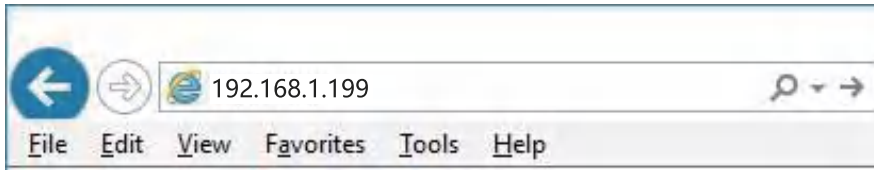


2. Double-click Internet Protocol 4 (TCP/IPv4)

3. Set the computer's IP address: The computer's IP address should be any one of the following free IP addresses **192.168.1.2 ~ 192.168.1.253**, except 192.168.1.199 (Because this IP address is the switch's IP address). and then click **OK**, to return to the previous page, click **OK**.

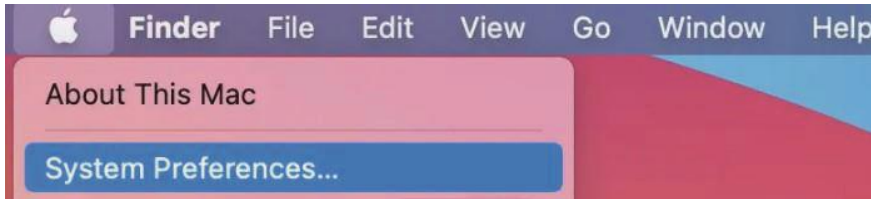


- Logging on to the equipment: Open a browser and type **192.168.1.199** in the address bar, and then press Enter; in the pop-up login interface, enter the factory logon **username "admin"**, **password "admin"** and click OK.



■ macOS

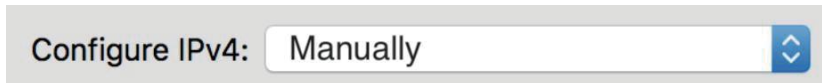
- Click the Apple icon, from the Apple drop-down list, select **System Preferences**.



- Click the Network icon.

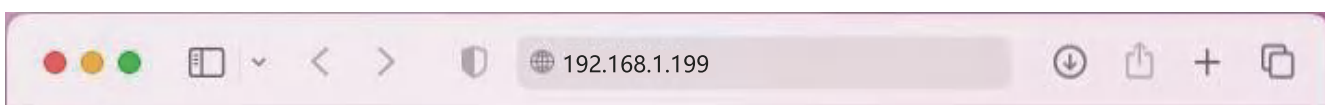


- Select the Ethernet (for wired connection), from the Configure IPv4 drop-down list, select Manually.



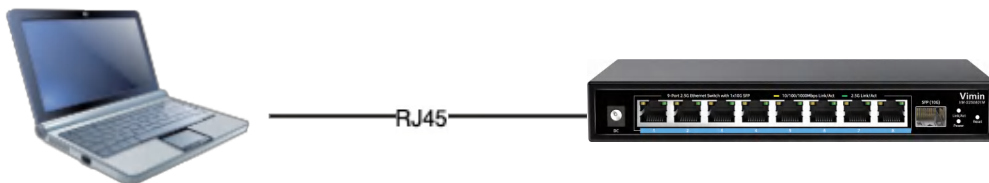
- Set the computer's IP address: The computer's IP address should be any one of the following free IP addresses 192.168.1.2 ~ 192.168.1.253, Subnet Mask 255.255.255.0, and then click Apply.

- Logging on to the equipment: Open a browser and type 192.168.1.199 in the address bar, and then press Enter; in the pop-up login interface, enter the factory logon username "admin", password "admin" and click OK.



Am Gerät anmelden

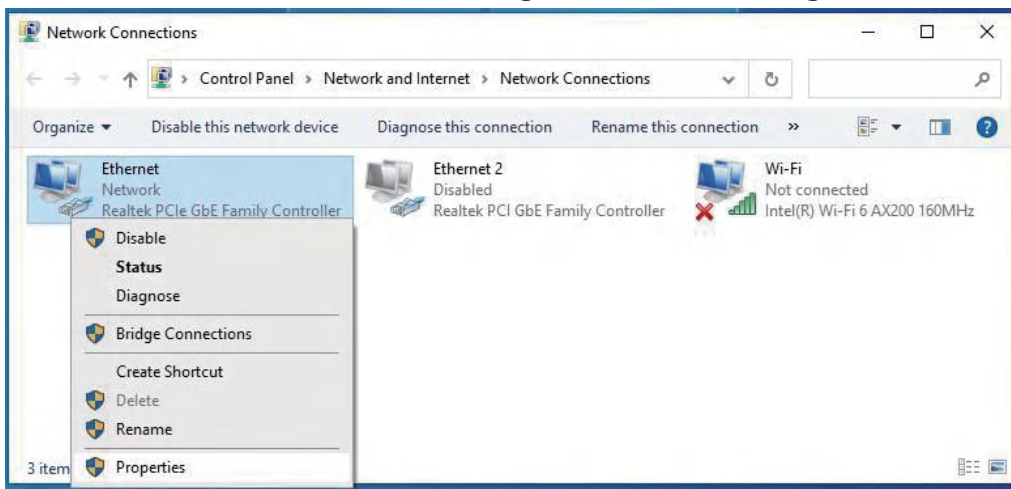
- Verbinden Sie den RJ-45-Anschluss am Switch über ein Netzwerkkabel mit einem Computer.



- Stellen Sie die TCP/IP-Eigenschaften des Computers ein:

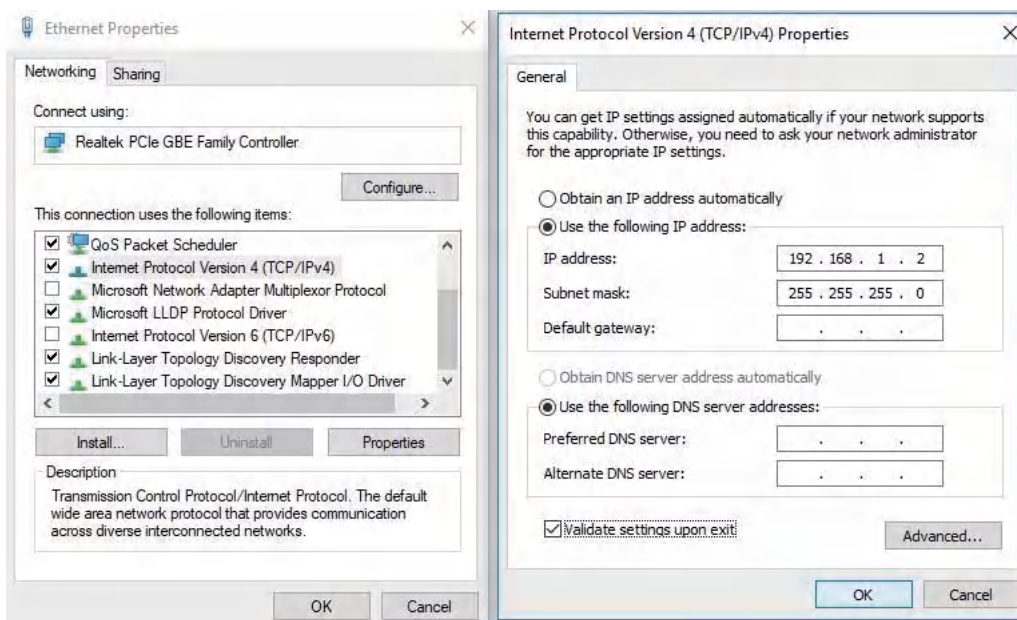
■ Windows

1. Klicken Sie auf **Start** → **Systemsteuerung (W10/11: Einstellungen)** → **Netzwerk und Internet** → **Netzwerk- und Freigabecenter (W10/11: Status)** → **Adaptoreinstellungen ändern**, rechtsklicken Sie auf **LAN-Verbindung** und wählen Sie **Eigenschaften**;

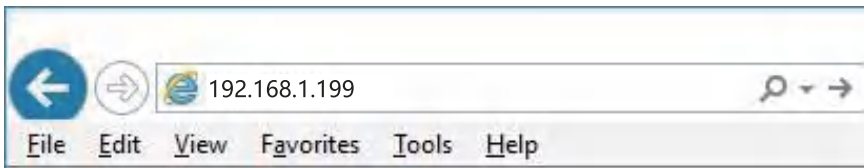


2. Doppelklicken Sie auf **Internetprotokoll 4 (TCP/IPv4)**;

3. IP-Adresse des Computers einrichten: Die IP-Adresse des Computers sollte eine der folgenden freien IP-Adressen 192.168.1.2 bis 192.168.1.253 sein, außer 192.168.1.199 (weil diese IP-Adresse des Switches ist), klicken Sie dann zum Zurückkehren zur vorherigen Seite auf **OK** und dann nochmals **OK** um das Fenster zu schließen.

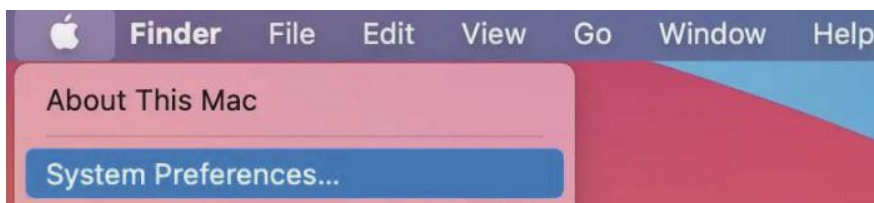


- Am Gerät anmelden: Öffnen Sie einen Browser und geben Sie 192.168.1.199 in die Adresszeile ein, drücken Sie anschließend Enter; geben Sie am eingeblendeten Anmeldebildschirm den werkseitigen Benutzernamen ‚admin‘ und das Kennwort, admin‘ ein, klicken Sie dann auf OK.

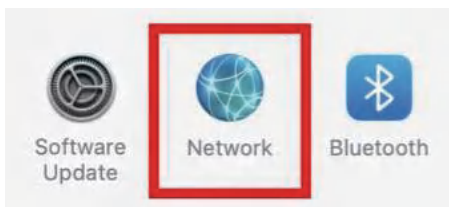


■ macOS

- Klicken Sie auf das Apple-Symbol, wählen Sie in der Apple-Dropdown-Liste Systemeinstellungen aus.



- Klicken Sie auf das Symbol Netzwerk.

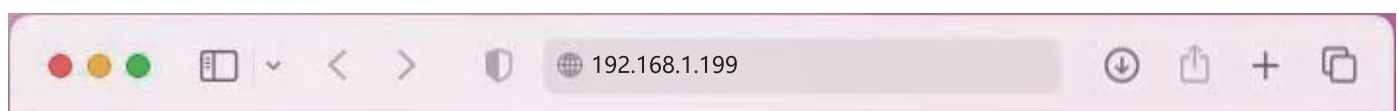


- Wählen Sie Ethernet (für kabelgebundene Verbindung) und in der Dropdown-Liste IPv4 konfigurieren die Option, ‚Manuell‘ aus.



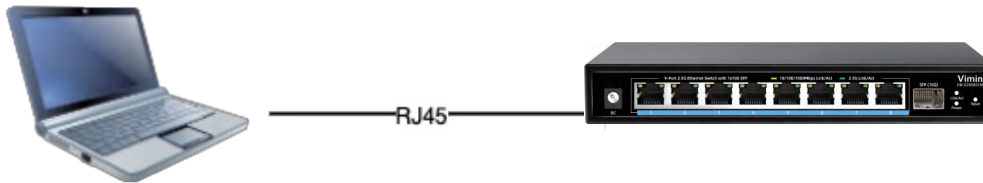
- IP-Adresse des Computers einrichten: Die IP-Adresse des Computers sollte eine der folgenden freien IP-Adressen 192.168.1.2 bis 192.168.1.253 sein; Subnet Mask 255.255.255.0, klicken Sie dann auf Übernehmen.

- Am Gerät anmelden: Öffnen Sie einen Browser und geben Sie 192.168.1.199 in die Adresszeile ein, drücken Sie anschließend Enter; geben Sie am eingeblendeten Anmeldebildschirm den werkseitigen Benutzernamen ‚admin‘ und das Kennwort, admin‘ ein, klicken Sie dann auf OK.



Connexion à l'équipement

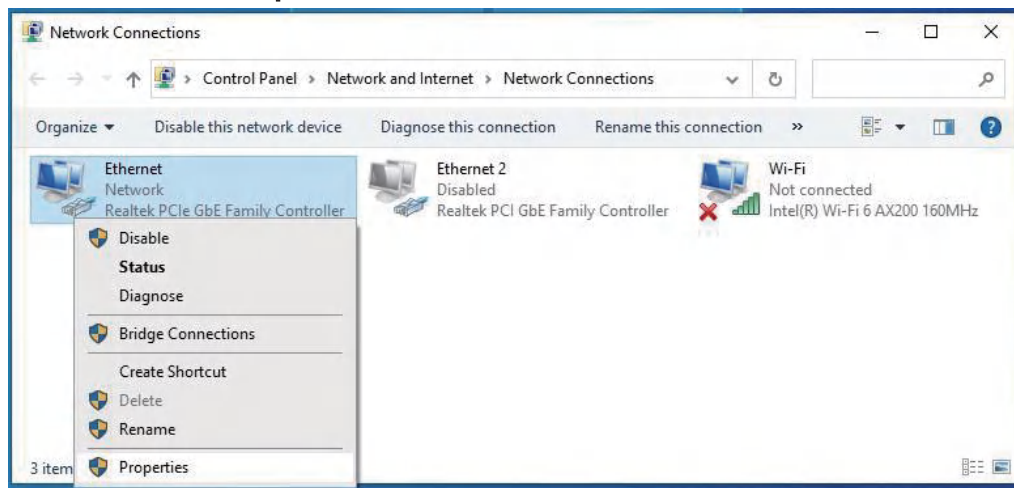
- Raccordez le câble d'interface RJ-45 d'un commutateur à un ordinateur avec un câble réseau.



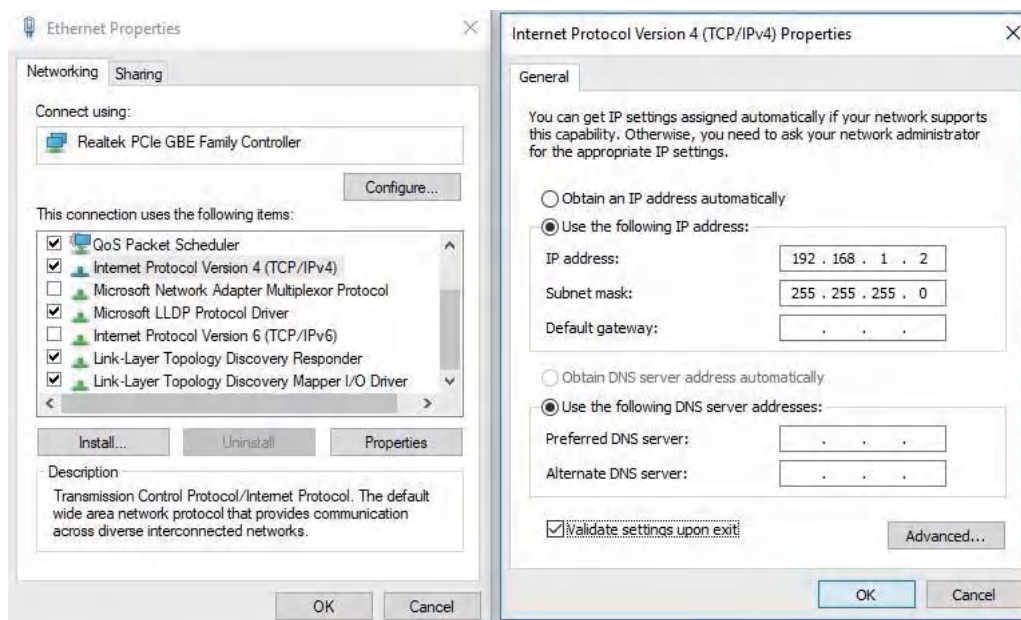
- Définissez les propriétés TCP/IP de l'ordinateur:

■ Windows

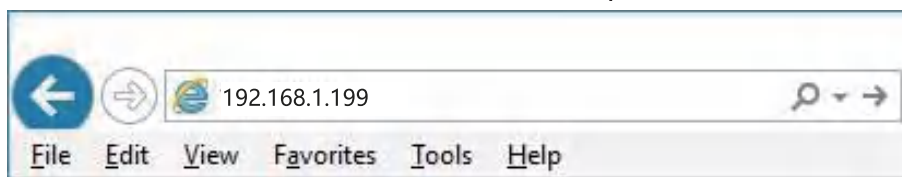
1. Cliquez sur **Démarrer** → **Panneau de configuration** → **Réseau et Internet** → **Centre réseau et partage** → **Modifier les paramètres de l'adaptateur**, faites un clic droit sur **Connexion locale** et sélectionnez **Propriétés**.



2. Double-cliquez sur **Internet Protocole version 4 (TCP/IPv4)**.
3. Définir l'adresse IP de l'ordinateur: L'adresse IP de l'ordinateur doit être l'une des adresses IP libres suivantes **192.168.1.2** à **192.168.1.253**, sauf 192.168.1.199 (parce que cette adresse IP est celle du commutateur), puis cliquez sur **OK**, pour retourner à la page précédente, cliquez sur **OK**.

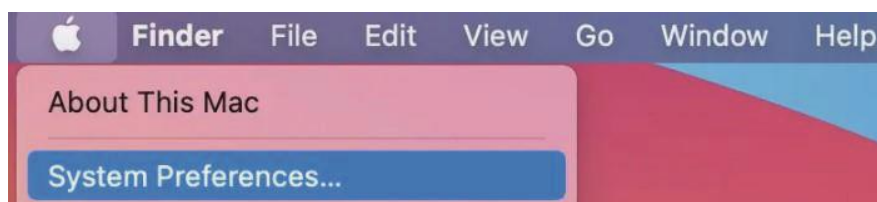


- Connexion à l'équipement: ouvrez un navigateur et saisissez **192.168.1.199** dans la barre d'adresse, puis appuyez sur l'entrée; dans l'interface contextuelle de connexion, saisissez le nom d'utilisateur de connexion d'usine « admin », le mot de passe « admin » et cliquez sur OK

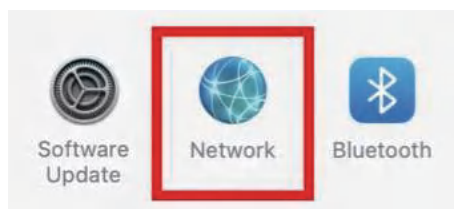


■ macOS

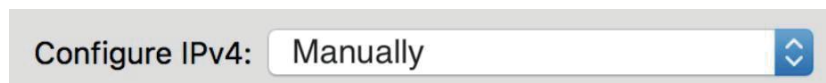
- Cliquez sur l'icône Apple, dans la liste déroulante Apple, sélectionnez Préférences Système.



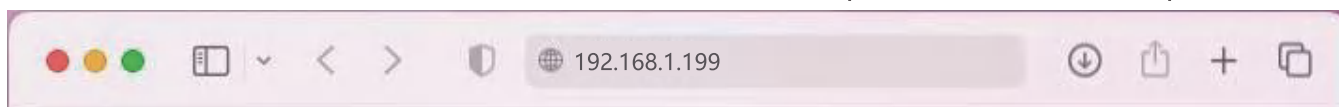
- Cliquez sur l'icône réseau.



- Sélectionnez Ethernet (pour une connexion filaire), dans la liste déroulante **Configurer IPv4** sélectionnez Manuellement.



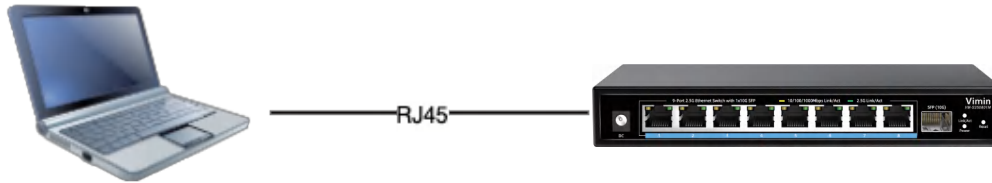
- Définissez l'adresse IP de l'ordinateur: l'adresse IP de l'ordinateur doit être l'une des adresses IP libres suivants 192.168.1.2 ~ 192.168.1.253, masque de sous réseau 255.255.255.0, puis cliquez sur Appliquer.
- Connexion à l'équipement: ouvrez un navigateur et saisissez 192.168.1.199 dans la barre d'adresse, puis appuyez sur l'entrée; dans l'interface contextuelle de connexion, saisissez le nom d'utilisateur de connexion d'usine « admin », le mot de passe « admin » et cliquez sur OK



Español

Iniciar sesión en el equipo

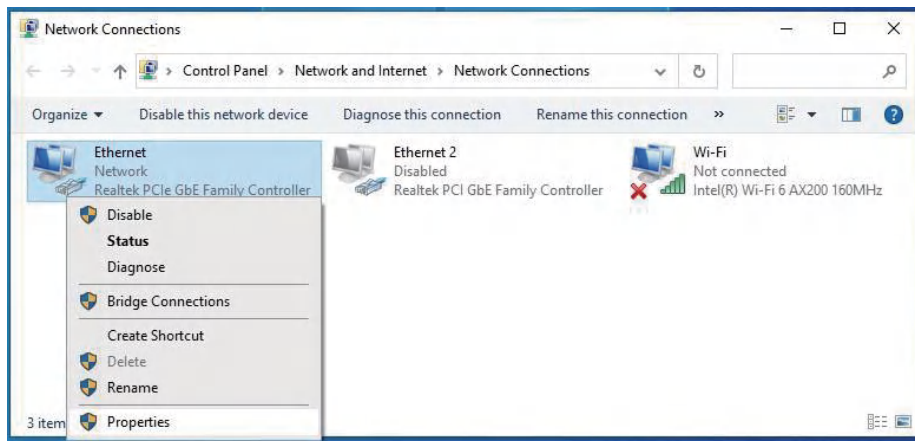
- Conecte el cable de interfaz RJ-45 de un conmutador con un equipo mediante un cable de red.



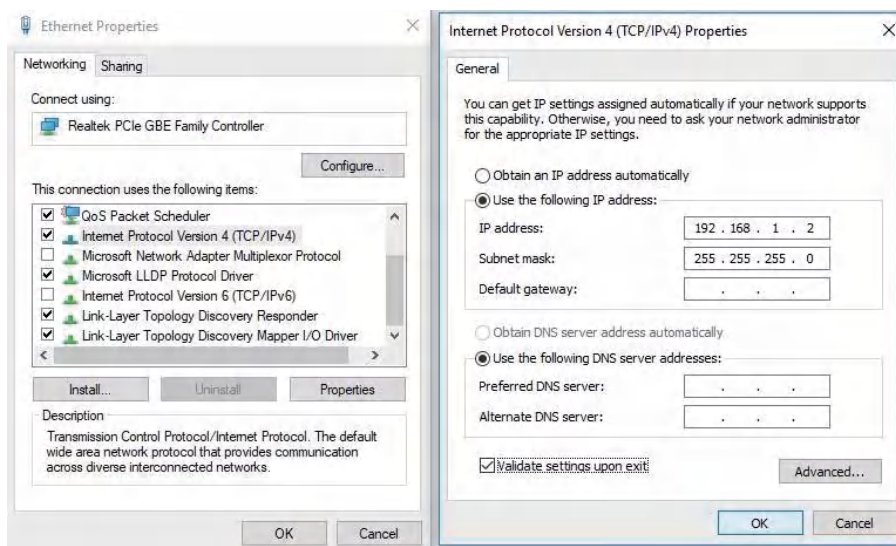
- Establezca las propiedades TCP/IP del equipo.

■ Windows

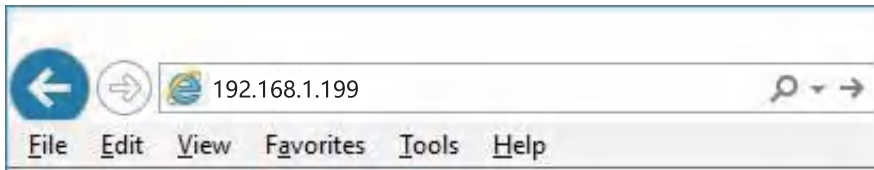
1. Haga clic en **Inicio** → **Panel de control** → **Redes e Internet** → **Centro de redes y recursos compartidos** → **Cambiar configuración del adaptador**, haga clic con el botón derecho en **Conexión local** y seleccione **Propiedades**;



2. Haga doble clic en **Protocolo de Internet 4 (TCP/IPv4)**.
3. Establezca la dirección IP del equipo: la dirección IP del equipo debe ser cualquiera de las siguientes direcciones IP disponibles: **192.168.1.2 ~ 192.168.1.253**, excepto 192.168.1.199 (porque esta dirección IP es la del interruptor). A continuación, haga clic en **Aceptar** para volver a la página anterior y, por último, haga clic en **Aceptar**.

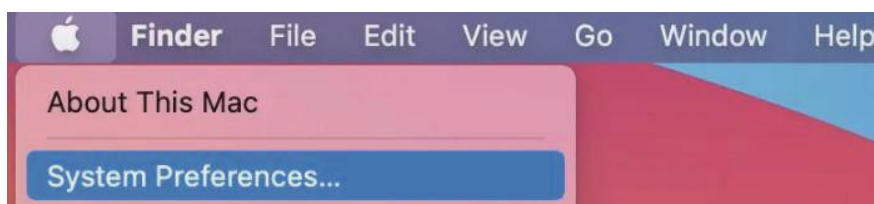


4. Iniciar sesión en el equipo: abra un explorador y escriba **192.168.1.199** en la barra de direcciones y, a continuación, presione entrar. En la interfaz de inicio de sesión desplegable, introduzca el nombre de usuario de inicio de sesión de fábrica ("**admin**"), la contraseña ("**admin**") y haga clicen **Aceptar**.

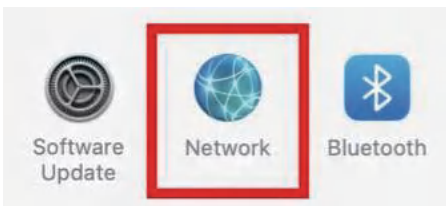


■ macOS

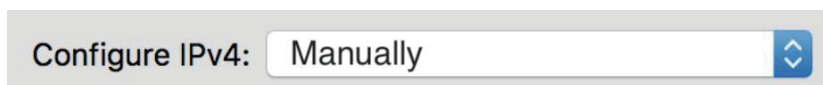
1. Haga clic en el icono de Apple, en la lista desplegable de Apple, seleccione Preferencias del sistema.



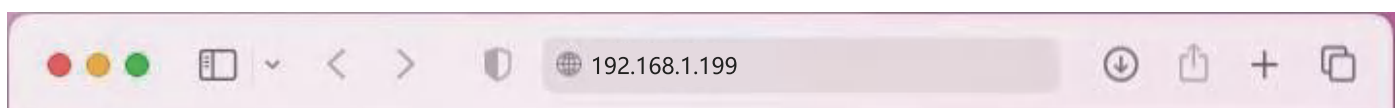
2. Haga clic en el icono Red.



3. Seleccione Ethernet (para conexión por cable), en la lista desplegable Configurar IPv4, seleccione Manualmente.

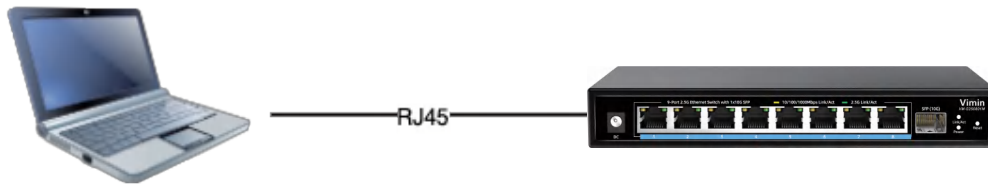


4. Establezca la dirección IP de la computadora: la dirección IP de la computadora debe ser cualquiera de las siguientes direcciones IP gratuitas 192.168.1.2 ~ 192.168.1.253, máscara de subred 255.255.255.0 y luego haga clic en Aplicar
5. Abra un explorador y escriba 192.168.1.199 en la barra de direcciones y, a continuación, presione entrar. En la interfaz de inicio de sesión desplegable, introduzca el nombre de usuario de inicio de sesión de fábrica ("**admin**"), la contraseña ("**admin**") y haga clicen Aceptar.



Accesso al dispositivo

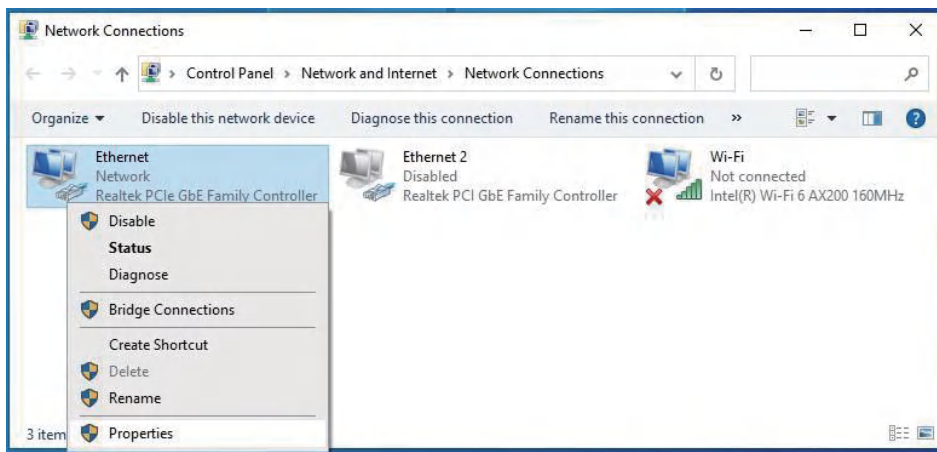
- Collegare il cavo di interfaccia RJ-45 di uno switch ad un computer utilizzando un cavo di rete.



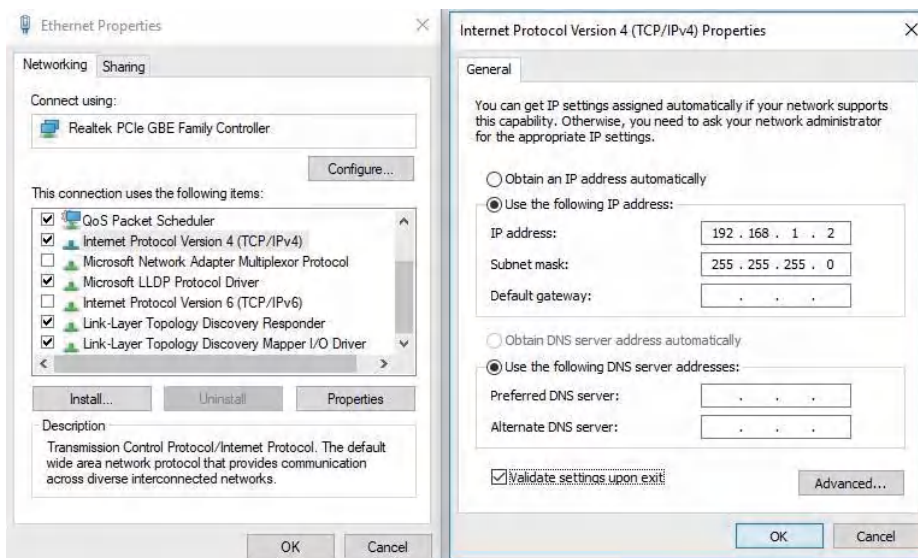
- Impostare le proprietà TCP/IP del computer.

■ Windows

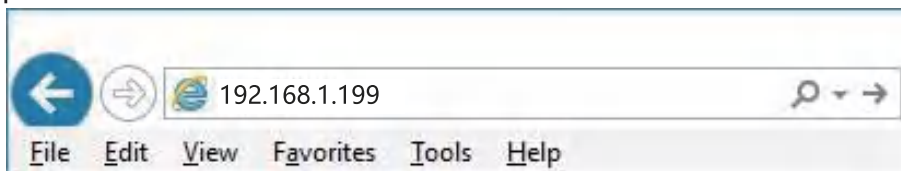
1. Fare clic su **Start** → **Pannello di controllo** → **Rete e Internet** → **Centro connessioni di rete e condivisione** → **Modifica impostazioni scheda**, fare clic col tasto destro del mouse su **Connessione locale** e selezionare **Proprietà**



2. Fare doppio clic su **Protocollo Internet 4 (TCP/IPv4)**;
3. Impostare l'indirizzo IP del computer: L'indirizzo IP del computer deve essere uno dei seguenti indirizzi IP liberi **192.168.1.2 ~ 192.168.1.253**, tranne 192.168.1.199 (perché questo indirizzo IP è quello dello switch), fare clic su **OK** per tornare alla pagina precedente, quindi fare clic su **OK**.

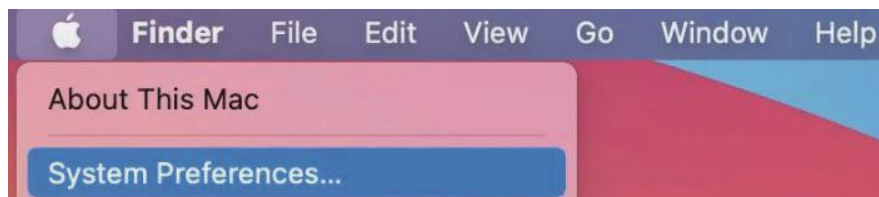


4. Accesso al dispositivo: Aprire un browser ed inserire **192.168.1.199** nella barra degli indirizzi, quindi premere Enter (Invio); nell'interfaccia di accesso, inserire il nome utente predefinito "**admin**", la password "**admin**" e fare clic su **OK**.

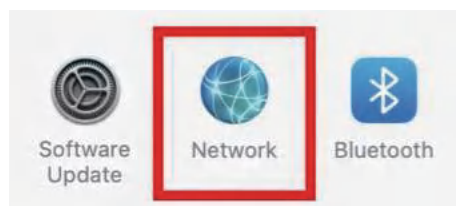


■ macOS

1. Fare clic sull'icona Apple, selezionare Preferenze di Sistema dall'elenco a discesa Apple.



2. Fare clic sull'icona Rete.

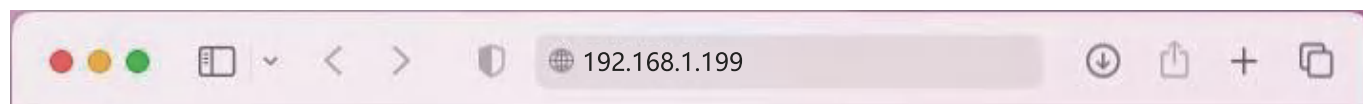


3. Selezionare Ethernet (per connessione cablata) e selezionare Manuale dall'elenco a discesa Configura IPv4.



4. Impostare l'indirizzo IP del computer: l'indirizzo IP del computer deve essere uno dei seguenti indirizzi IP liberi 192.168.1.2 ~ 192.168.1.253, Subnet Mask 255.255.255.0, quindi fare clic su Applica

5. Accesso al dispositivo: Aprire un browser ed inserire 192.168.1.199 nella barra degli indirizzi, quindi premere Enter (Invio); nell'interfaccia di accesso, inserire il nome utente predefinito "admin", la password "admin" e fare clic su OK.



Model	VM-S250402M
Power	DC 2.1
Ethernet	4*2.5G RJ45 Ports 2*10G SFP+ Port
Performance	
Backplane bandwidth	60Gbps
Packet forwarding rate	44.64Mbps
VLAN	4096
MAC address	4K
Jumbo frame	12Kbytes
Forwarding mode	Storage & forward
Network parameter	
Network protocol	IEEE802.3(Ethernet) IEEE802.3u(Fast Ethernet) IEEE802.3ab (Gigabit Ethernet) IEEE 802.3bz(2.5G Ethernet) IEEE 802.3z(Gigabit Ethernet) IEEE 802.3ae (10G Ethernet) IEEE802.3x(Flow control)
Industry standard	EMI: FCC Part 15 CISPR(EN55032) class AEMS: EN61000-4-2(ESD) EN61000-4-5(Surge)
Network medium	10Base-T: UTP category 3, 4, 5 cable (max100m) 100Base-Tx: UTP category 5, 5e cable (max100m) 1000Base-T: UTP category 5e, 6 cable (max100m) 2.5GBase-T:UTP category 5e, 6 cable (max100m)
Optical fiber medium	Multimode optical fiber: 50/125,62.5/125,100/140um Single-mode optical fiber: 8/125,8.7/125,9/125,10/125um
Environment standard	
Working environment	Working Temperature: 0°C ~45°C Storage Temperature: -40~70°C Working Humidity: 10%~90%, non-condensing Storage Temperature: 5%~90%, non-condensing
Power voltage	Adapter input voltage: AC 100-240V Switch input voltage: DC 12V1A
Functional indication	
PWR(Power indicator)	On: Powered on Off: Powered off
1-4 Network port green indicator	On: 2.5G Link connect normal Off: Link off
1-4 Network port yellow indicator	On: 10/100/1000M/2.5G Link connect normal Off: Link off Flashing: Data transmitting
Physical specification	
Structure size	Product Size: 160*95*30mm Package Size: 175*154*71mm Product Net-Weight: 0.38KG Product Gross-Weight: 0.62KG

Model	VM-S250501M
Power	DC 2.1
Ethernet	5*2.5G RJ45 Ports 1*10G SFP+ Port
Performance	
Backplane bandwidth	45Gbps
Packet forwarding rate	33.48Mbps
VLAN	4096
MAC address	4K
Jumbo frame	12Kbytes
Forwarding mode	Storage & forward
Network parameter	
Network protocol	IEEE802.3(Ethernet) IEEE802.3u(Fast Ethernet) IEEE802.3ab (Gigabit Ethernet) IEEE 802.3bz(2.5G Ethernet) IEEE 802.3z(Gigabit Ethernet) IEEE 802.3ae (10G Ethernet) IEEE802.3x(Flow control)
Industry standard	EMI: FCC Part 15 CISPR(EN55032) class AEMS: EN61000-4-2(ESD) EN61000-4-5(Surge)
Network medium	10Base-T: UTP category 3, 4, 5 cable (max100m) 100Base-Tx: UTP category 5, 5e cable (max100m) 1000Base-T: UTP category 5e, 6 cable (max100m) 2.5GBase-T:UTP category 5e, 6 cable (max100m)
Optical fiber medium	Multimode optical fiber: 50/125,62.5/125,100/140um Single-mode optical fiber: 8/125,8.7/125,9/125,10/125um
Environment standard	
Working environment	Working Temperature: 0°C ~45°C Storage Temperature: -40~70°C Working Humidity: 10%~90%, non-condensing Storage Temperature: 5%~90%, non-condensing
Power voltage	Adapter input voltage: AC 100-240V Switch input voltage: DC 12V1A
Functional indication	
PWR(Power indicator)	On: Powered on Off: Powered off
1-5 Network port green indicator	On: 2.5G Link connect normal Off: Link off
1-5 Network port yellow indicator	On: 10/100/1000M/2.5G Link connect normal Off: Link off Flashing: Data transmitting
Physical specification	
Structure size	Product Size: 160*95*30mm Package Size: 175*154*71mm Product Net-Weight: 0.38KG Product Gross-Weight: 0.62KG

Model	VM-S250801M
Power	DC 2.1
Ethernet	8*2.5G RJ45 Ports 1*10G SFP+ Port
Performance	
Backplane bandwidth	60Gbps
Packet forwarding rate	44.64Mbps
VLAN	4096
MAC address	4K
Jumbo frame	12Kbytes
Forwarding mode	Storage & forward
Network parameter	
Network protocol	IEEE802.3(Ethernet) IEEE802.3u(Fast Ethernet) IEEE802.3ab (Gigabit Ethernet) IEEE 802.3bz(2.5G Ethernet) IEEE 802.3z(Gigabit Ethernet) IEEE 802.3ae (10G Ethernet) IEEE802.3x(Flow control)
Industry standard	EMI: FCC Part 15 CISPR(EN55032) class AEMS: EN61000-4-2(ESD) EN61000-4-5(Surge)
Network medium	10Base-T: UTP category 3, 4, 5 cable (max100m) 100Base-Tx: UTP category 5, 5e cable (max100m) 1000Base-T: UTP category 5e, 6 cable (max100m) 2.5GBase-T:UTP category 5e, 6 cable (max100m)
Optical fiber medium	Multimode optical fiber: 50/125,62.5/125,100/140um Single-mode optical fiber: 8/125,8.7/125,9/125,10/125um
Environment standard	
Working environment	Working Temperature: 0°C ~45°C Storage Temperature: -40~70°C Working Humidity: 10%~90%, non-condensing Storage Temperature: 5%~90%, non-condensing
Power voltage	Adapter input voltage: AC 100-240V Switch input voltage: DC 12V1.5A
Functional indication	
PWR(Power indicator)	On: Powered on Off: Powered off
1-8 Network port green indicator	On: 2.5G Link connect normal Off: Link off
1-8 Network port yellow indicator	On: 10/100/1000M/2.5G Link connect normal Off: Link off Flashing: Data transmitting
Physical specification	
Structure size	Product Size: 190*116*29mm Package Size: 205*170*71mm Product Net-Weight: 0.5KG Product Gross-Weight:0.76KG

