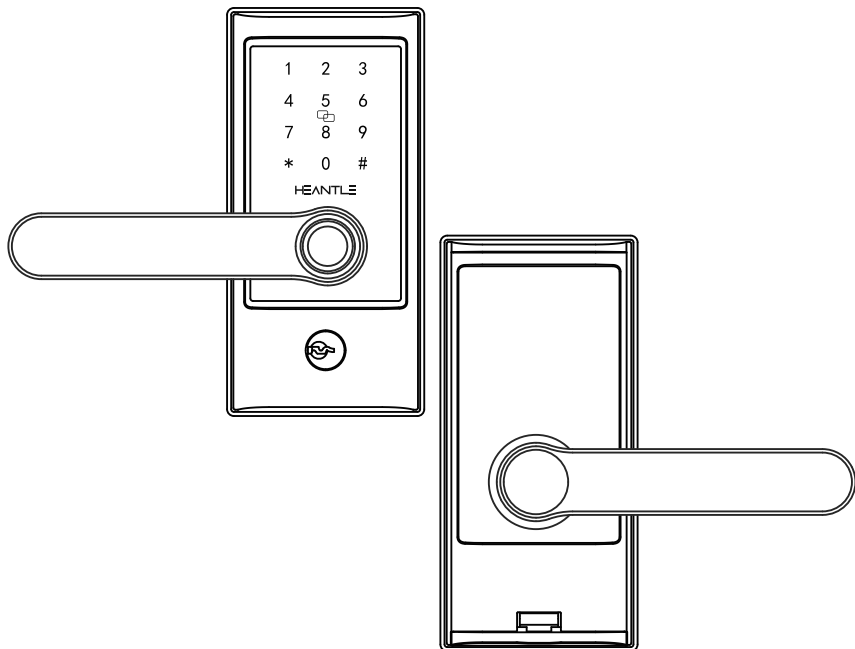


HEANTLE



Smart Lock Manual

Fingerprint Door Lock

Customer Support

E-Mail: heantletech@gmail.com

Toll Free: 1-888-988-7968(US)

Version: HNTUS-ZNS-H004

VIDEO INSTRUCTION & UPDATE

1. Installation Video

(Scan below code and watch the video)

<https://youtu.be/ftR7mgF7JMA>



2. For more video, please search “ Heantle Tech” and subscribe us on Youtube, we will update all our videos there.

Link:

https://www.youtube.com/channel/UCPt61y4t_rHHwYTHoFYgOYg

(Scan below code and subscribe us)

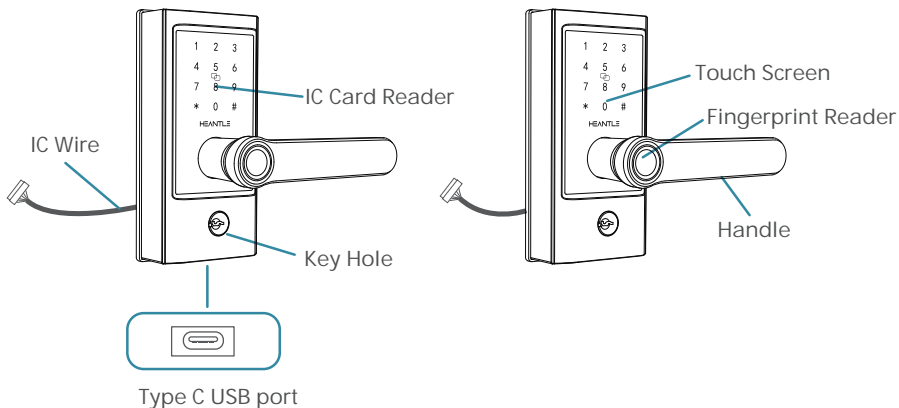


Contents

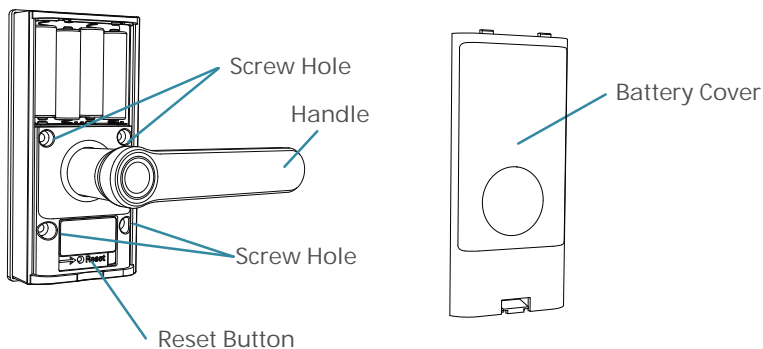
PRODUCT DETAILS	01
PACKAGE LIST	02
GETTING STARTED	03
HOW TO RESET THE LOCK	09
APP GUIDE	11
GATEWAY CONNECTION	20
ALEXA CONNECTION	22
GOOGLE HOME CONNECTION	23
FAQ	24

Product Details

◆ Front View

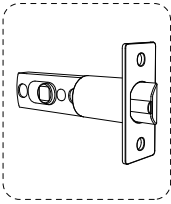


◆ Rear View

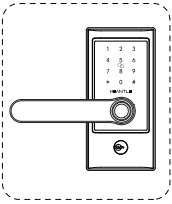


Material	Alloy
Weight	4.41lb
Waterproof	IP63
Operation Temp	-13°F-149°F
Power Supply	AA Battery
Backup Power	Type-C

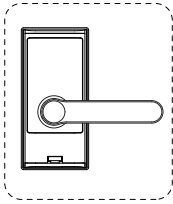
Package List



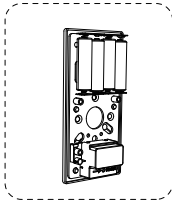
Latch



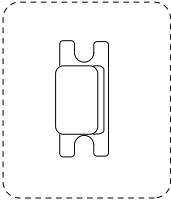
Front Panel



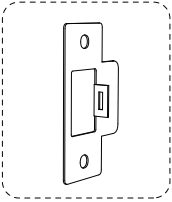
Back Panel



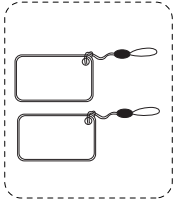
Battery Cover



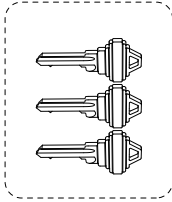
Strike Pad



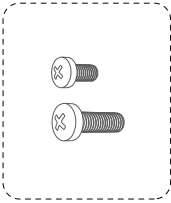
Strike Plate



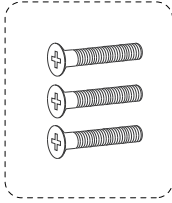
IC Card*2



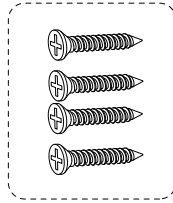
Mechanical Keys*3



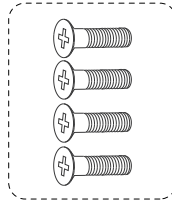
Handle Direction Adjustment Screws*2



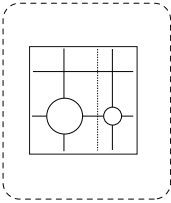
Back Plate Screws*3



Latch/Strike Screws*4



Back Panel Screws*4



Mark Card



User Manual

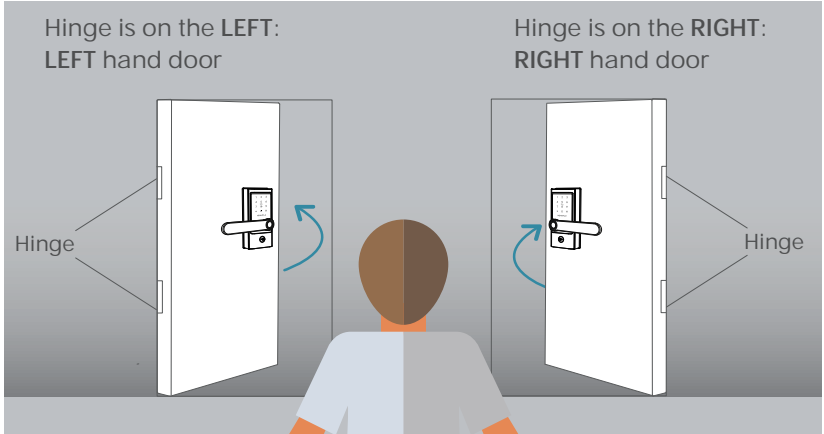
Note:

All kinds of screws have 1 more for backup, they are packed in 1 small bag.

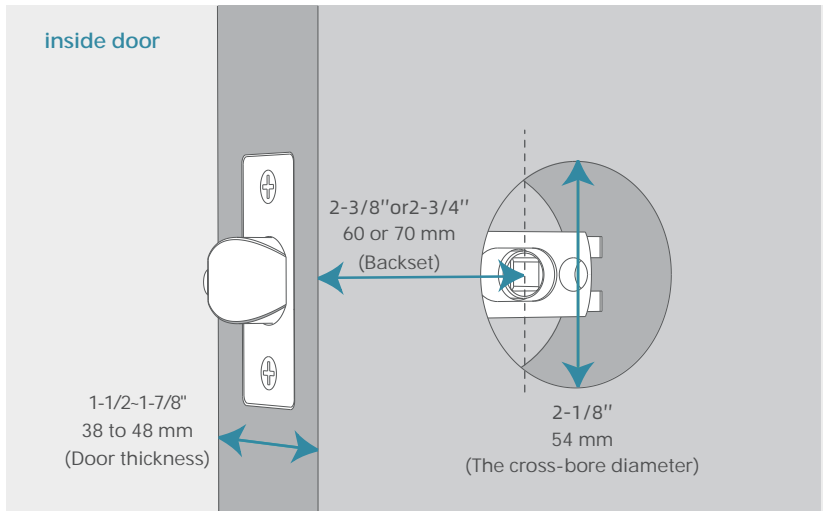
GETTING STARTED

◆ Identify Left/Right Hand Door

Stand by OUTSIDE facing the keypad.

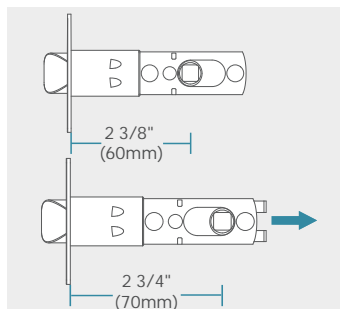


◆ Check Door Measurements

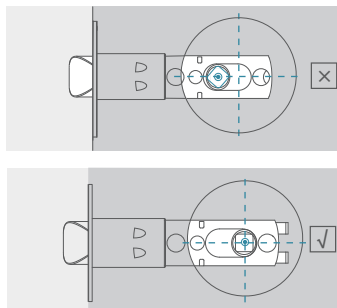


INSTALL THE HANDLE LOCK

◆ Adjust the Latch



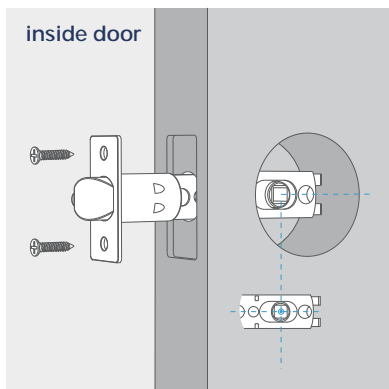
A Measuring if the latch is long enough, pull it to adjust from 2 3/8" (60mm) to 2 3/4" (70mm)



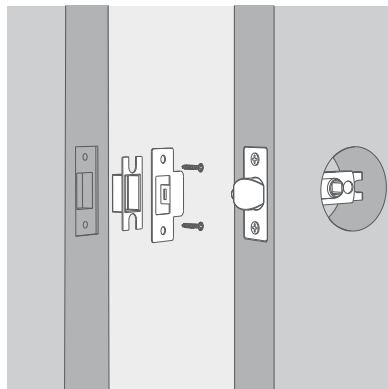
B ①Please make sure the hole in the middle is a square instead of rhomb like picture on the top shows

②Please keep the "square" on the left or right side of the latch, not in the middle of the latch

◆ Install the Latch and Strike Plate



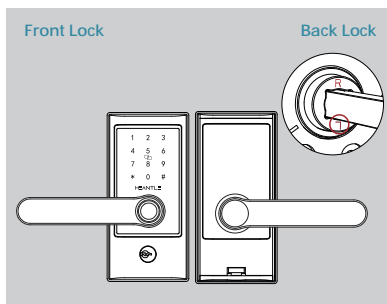
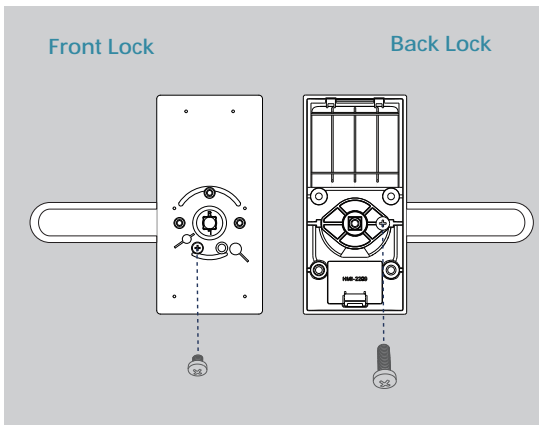
A Insert the latch and keep the squared hole horizontal.



B Install the strike & latch screws to fix it.

◆ Adjust the Handle Direction

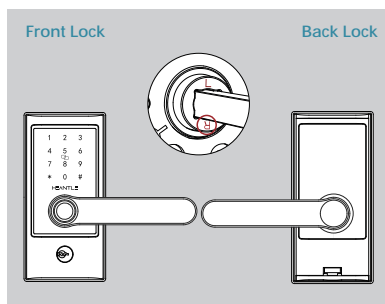
A Loosen the screws on the front and back panel to adjust the handle direction



B Left Hand Door:

Turn the front handle to Left
Turn the back handle to Right

Note: Please keep the letter
" L " at the bottom



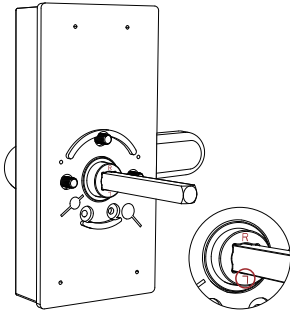
C Right Hand Door:

Turn the front handle to Right
Turn the back handle to Left

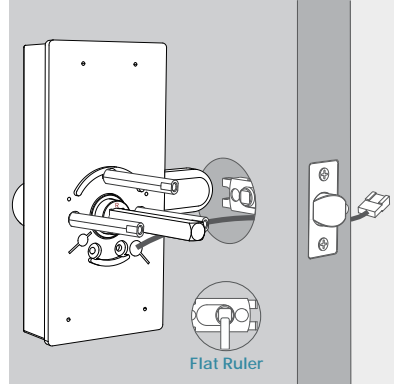
Note: Please keep the letter
" R " at the bottom

◆ Install the Touchscreen Keypad

Front door



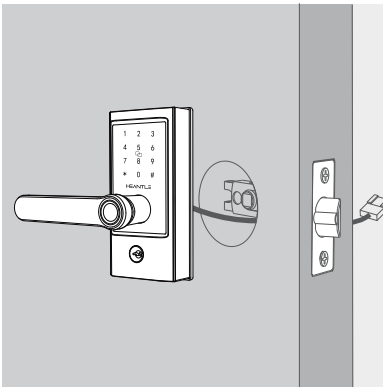
A Adjust the flat ruler direction and Handle Direction Adjustment Screws to fix the handle direction



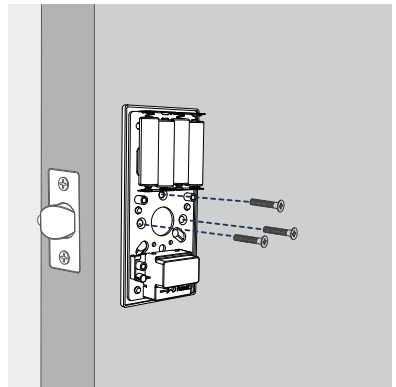
B Determine the Handle Direction Adjustment Screws installation position according to the door opening direction.

C Tighten up 3pcs female screw bolt

◆ Route the IC Wire & Install the Back Plate

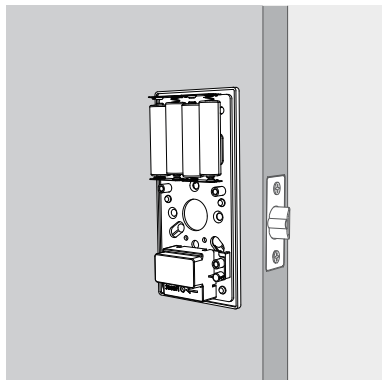


A Route the IC wire under the latch and cross it over the plate hole.

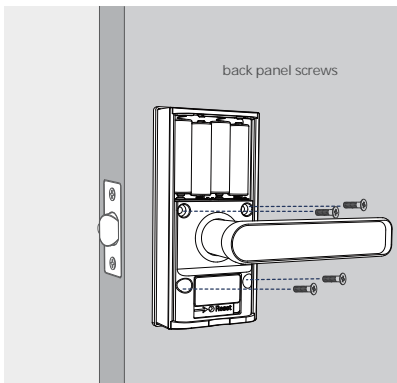


B Install the 4pcs back plate screws to fix the back plate

◆ Install the Back Panel

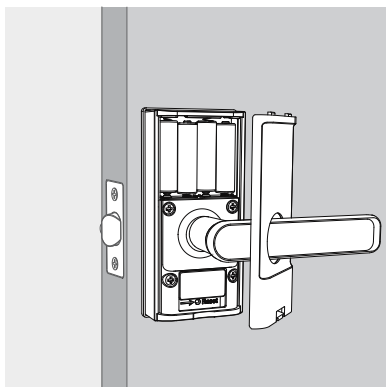


A Connect the IC wire



B Install the 4 back panel screws

Note: Make the ribbon won't be covered by the back panel



C Install the batteries and cover.

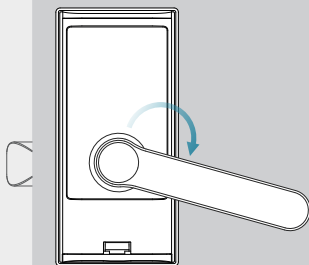
◆ That wasn't so bad, was it?

Your lock is now installed! Let's do a final test!

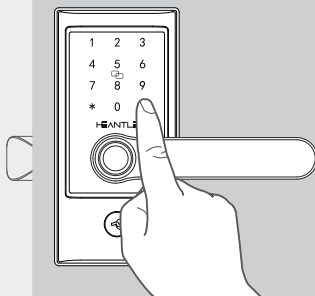
Note: Please keep your door open to run the test to avoid being locked out.

1. Extend and retract the bolt using the mechanical key and handle, make sure the latch retracts smoothly.
2. Now enter the administrator passcode 123456# for unlocking.

Back Lock

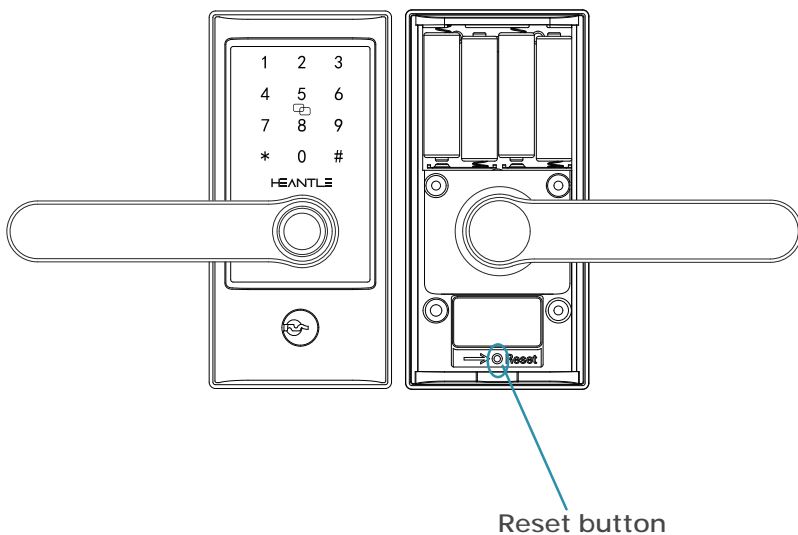


Front Lock

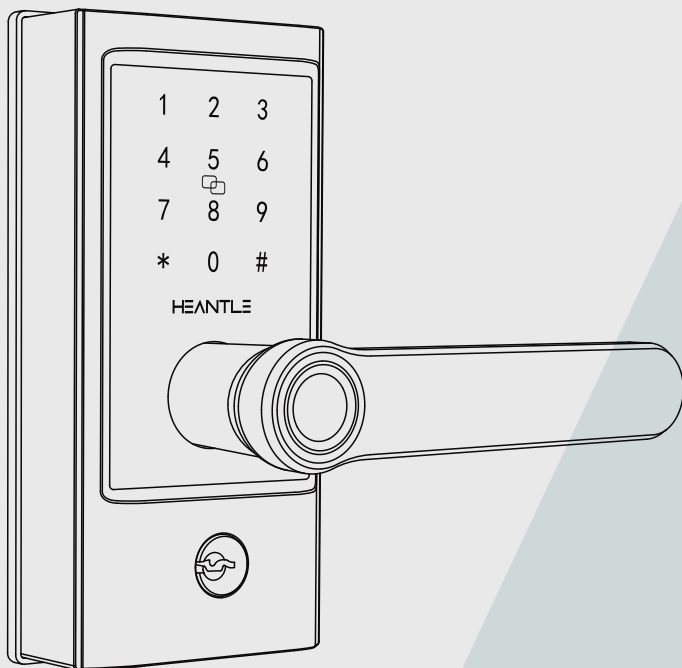


How to Reset the Lock

- 1) Take out 1 battery, wait 5s, put the battery back.
 - 2) Use the screwdriver or a stick to press and hold the reset button for 3s
 - 3) Input 000# on the keypad after hear "Please input the initialization passcode"
- (If you here the voice prompt " Deleting Bluetooth administrator successful" means the lock was reset successfully)



HEANTLE Smart Lock



APP Instructions

APP GUIDE

◆ ACCOUNT REGISTRATION

Download the “Next lock” from Google Play or App Store.



STEP 1
Click “ Register”
to continue

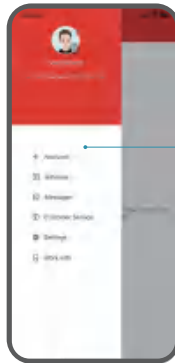


STEP 2
Choose your Email
or Phone number
as your app account.

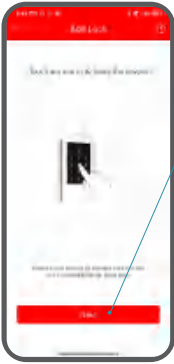
◆ LOCK PAIRNG



STEP 1
Click the “ 3-bar”
icon

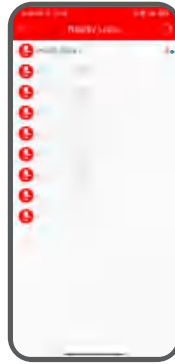


STEP 2
Choose “ Add lock”



STEP 3
Click "Next"

Note:
Press any keys on
the keypad



STEP 4
Click "+" to
add lock



STEP 5
Name your lock

Tech Support

E-Mail: heantletech@gmail.com
Toll Free: 1-888-988-7968(US)

◆ HOME PAGE OVERVIEW



Unlock/Lock

Unlock/Lock the door via Bluetooth



eKeys

Manage and send electronic keys



Cards

Manage and add IC cards/fobs



Remote

Manage and add remotes



Records

View who operate the lock in what way at what time



Remote Unlock

G2 gateway required



Passcodes

Manage and create keypad passcodes



Fingerprints

Manage and set up fingerprints



Authorized Admin

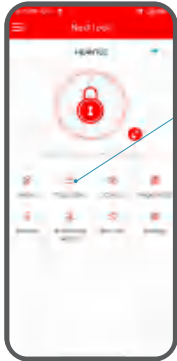
Create and edit authorized admins for the lock



Settings

View and change settings

◆ PASSCODES



STEP 1
Click " Passcodes"



STEP 2
Generate Passcode



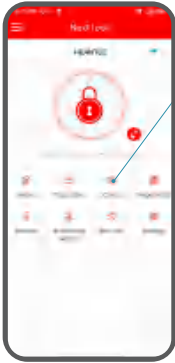
STEP 3
Decide which type of passcodes do you want and then enter a name for the passcode.

Note: To generate custom passcode, your phone must be within 5 meters to the lock.

Choose different types of passcodes according to your needs (all the 6 kinds of passcodes are randomly generated except the "Custom Passcode")

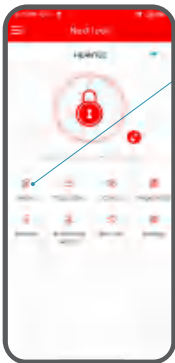
Permanent	Permanent passcodes
Timed	Passcodes with a time limit
One-time	Passcodes for one use
Custom	Customized passcodes
Recurring	Passcodes that are valid during a particular period of time
Erase	Passcodes for deleting all passcodes

◆ IC CARDS



1. Click " Cards"
2. Add card
3. Enter a name for the card
4. Place the card at the designated spot of the keypad when the lock says " Please swipe your card"
5. Input successful

◆ eKeys



STEP 1

Click " eKeys"

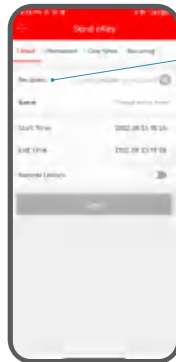
Note:

1. The recipients of eKeys must first register a app account. His or her account could be his or her email or phone number.
2. Recipients are only allowed to use the app to unlock/lock the door and have no access to the settings of the lock.



STEP 2

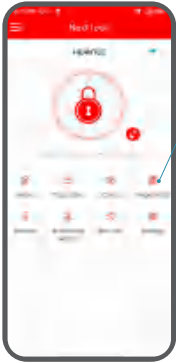
Send eKey



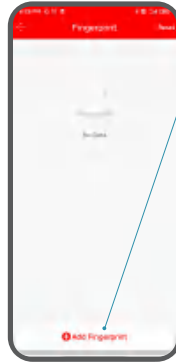
STEP 3

Enter recipient's account and name to send eKeys.

◆ FINGERPRINTS



STEP 1
Click " Fingerprints"



STEP 2
Add Fingerprint



STEP 3
Name the fingerprint

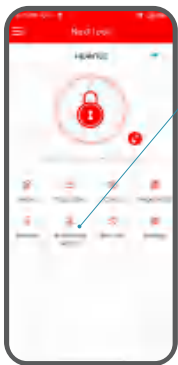
STEP 4
The lock will remind you to place your finger on the sensor 4 times

STEP 5
Input successful

To increase recognition rate:

1. Make sure the fingerprint reader is clean
2. Try to use different fingers
3. Place your finger the way you did when you were adding your fingerprints

◆ AUTHORIZED ADMIN



STEP 1
Click " Authorized Admin"



STEP 2
Create Admin



STEP 3
Enter recipient's account

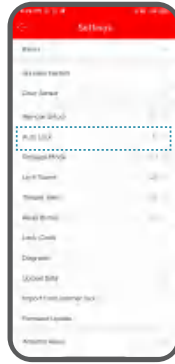
Note:

1. An authorized admin can program the lock nearly the way the admin does. But compared with the admin, an authorized admin has no access to " Admin Passcode" and " Authorized Admins" .
2. If the recipient's account is a phone number please add " +1" at the beginning.

◆ AUTO LOCK



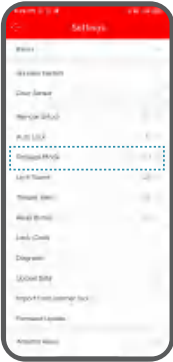
STEP 1
Click " Settings"



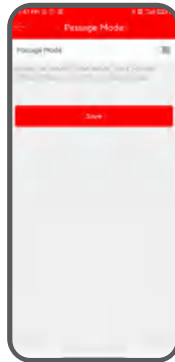
STEP 2
When " Auto Lock" is on, the lock will automatically lock after 5s by default.

Note: Please lock and unlock the door manually one time to activate this feature.

◆ PASSAGE MODE



STEP 1



STEP 2

Turn on

“Passage Mode”



STEP 3

Choose the days
and hours that
you want this
feature to function

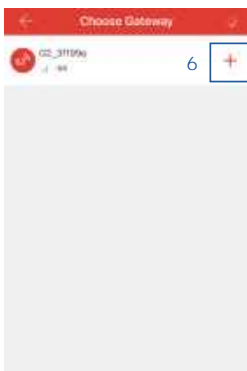
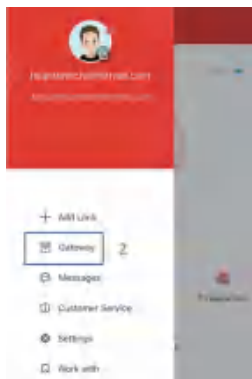
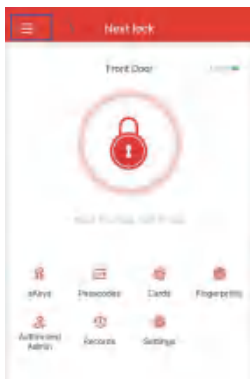
When this feature is on:

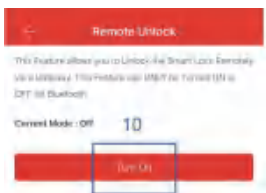
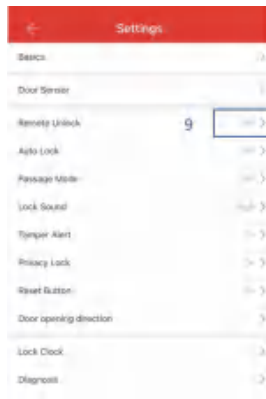
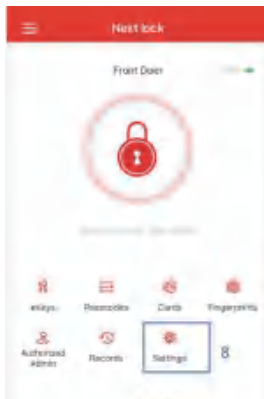
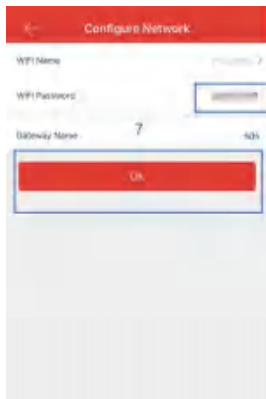
- ①The lock will remain unlocked
- ②The “Auto Lock” will be disabled

GATEWAY CONNECTION

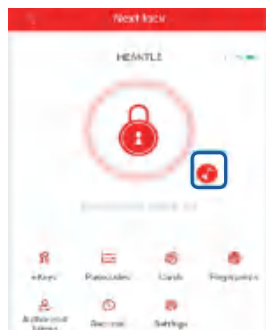
The Gateway is only compatible with 2.4GHz Wi-Fi. Please check your router before you connect the Gateway.

Please place the Gateway within 30 feet to the smart lock, ideally within 10 feet. In Step 6, please make sure the Gateway flashes blue&red, and then hit " + " .





Note:
 To remotely unlock:
 Touch the small button
 To remotely lock
 Hold the big lock button



ALEXA CONNECTION

Before you connect your HEANTLE smart lock with Alexa,, please make sure you have connected Gateway and turned on Remote Unlock in Settings.

Step 1: Click “ Menu” icon in Alexa App;

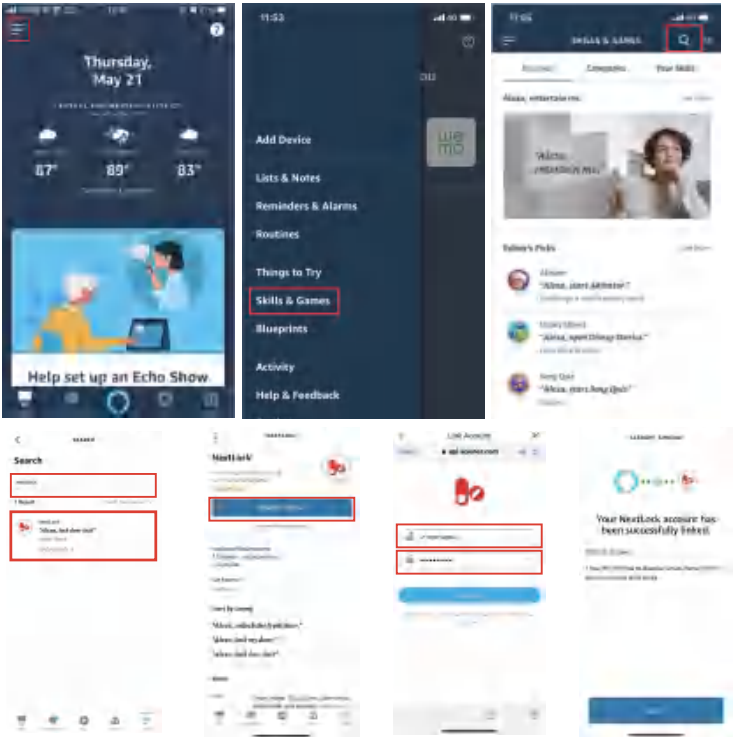
Step 2: Select “ Skill&Games” ;

Step 3: Enter "nextlock" in search bar;

Step 4: Select nextlock" and "ENABLE TO USE";

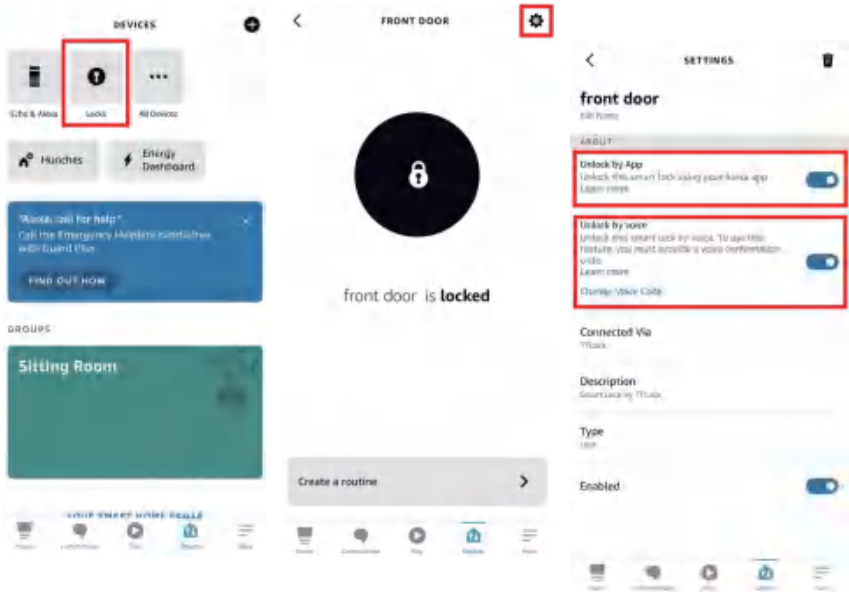
Step 5: Log in your NextLock Account and click "Authorize".

Note: If your account is phone number, please add “ +1” in front of it, or it may show “ Invalid Account and Password” .



Turn On “ Unlock by app” and “ Unlock by voice” in Alexa App

Click “ Locks” ---Select your lock---Click” Settings” icon---Turn on “ Unlock by App” and “ Unlock by voice”



GOOGLE HOME CONNECTION

Step 1: Make sure you have installed Google Home APP, connected Gateway and Turned on Remote Unlock in NextLock Settings.

Step 2: Click "+" icon in the upper left corner of Google Home app.

Step 3: In setup device page, choose "Works with Google".

Step 4: Search for "NextLock", and log in your NextLock Account.

Step 5: In Next Lock, Click” Menu” icon in upper left corner---Click” Work with” ---Select” Google Home” ---Click” Turn On” and set a security code. You will be asked for this code when unlocking with google home.

FAQ

Q: How do I lock my door when I am leaving?

A: Hold the # key on the keypad for 3s or use " Auto Lock" .

Q: How do I share access to the lock with my family/friends?

A: Send them " eKeys" or use " Authorized Admin" .

Q: Where can I find my app account?

A :Go the home page of the app and click the " 3-bar" icon in the upper left corner then click your profile photo.

Q: What should I do when I input wrong passcodes 5 times and the alarm goes off?

A: Wait for 5 minutes or use the app to unlock.

Q: How to find and change admin passcode

A: Settings>Basics>Admin Passcode. Touch the code to change it(make sure the Bluetooth is on and your phone is within 5 meters to the lock).

Q: What's the difference between "eKeys" and "Authorized Admins" ?

A: Apart from using the app to unlock/lock, an authorized admin can also generate, edit, delete passcodes, cards and fingerprints. Additionally, he/she is able to adjust settings like auto-lock, passage mode etc.

Please feel free to contact us if you have any question or concern about the HEANTLE Smart Lock or G2 Gateway:

Customer Support

E-Mail: heantletech@gmail.com

Toll Free: 1-888-988-7968(US)

