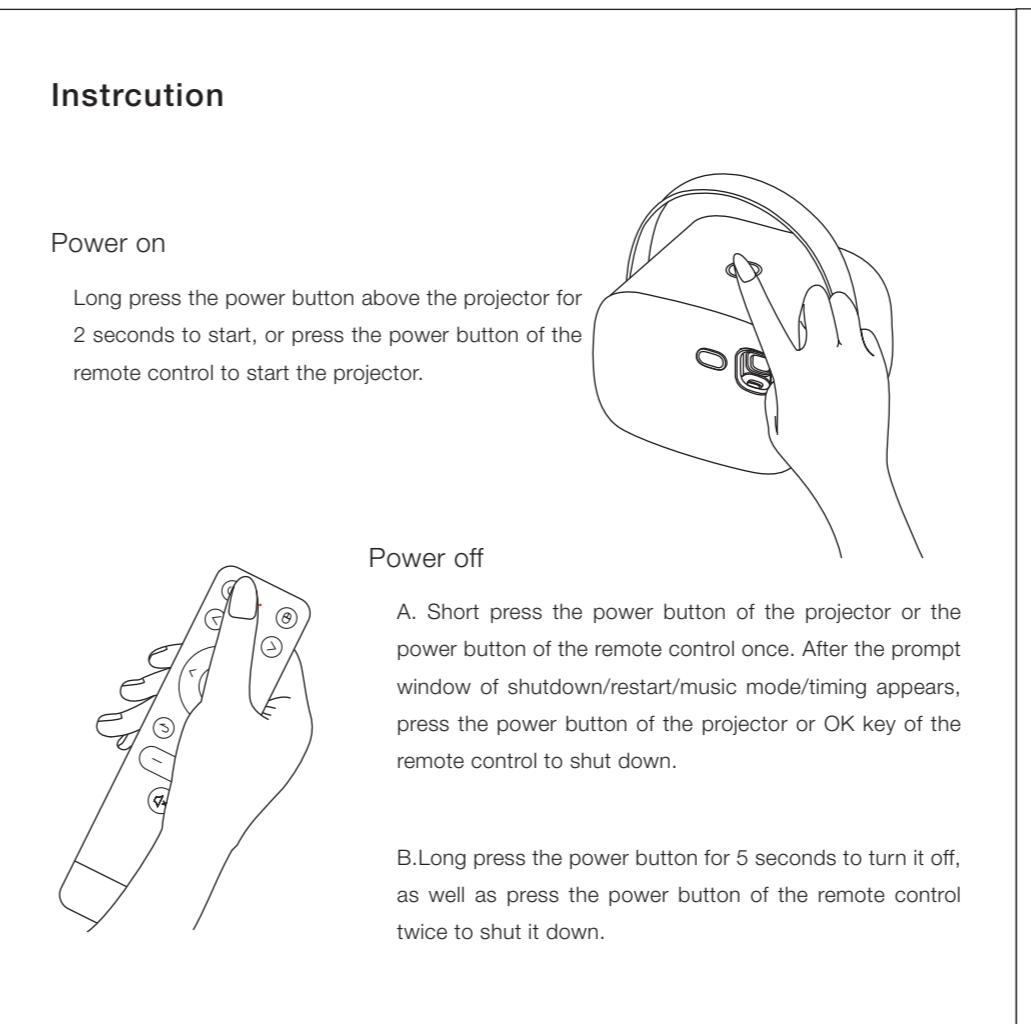


Basic parameters

Display technology	DLP	Keystone Correction	- 4 direction correction	Product type	Portable
Size	140*104*97mm	Correction range	Vertical ±40° Horizontal ±40°	The light source type	LED
Weight	0.745Kg	Throw ratio	WWF-MSS 1.3:1 WWF-MFS 1.2:1	Wireless connection	Wi-Fi, Bluetooth

Indicator Light

		Red light	Blue light	Purple light
Power Mode	Charging	ON	OFF	OFF
	Charging completed (standby)	OFF	OFF	ON
	Start Charging (starting)	OFF	ON	OFF
Battery Mode	Power off	OFF	OFF	OFF
	Power on	OFF	ON	OFF
Battery Model	Overheat	Slow flash	OFF	OFF
	Fan error	QuickFlash	OFF	OFF



Product upgrade

Please ensure that the power of the projector is more than 50% or connected to the power supply (Please keep charging during the upgrade process).

- Upgrade online with Wi-Fi
- If there is a new firmware update in the local upgrade, you can download the latest Firmware from the official website, put it into the USB drive and insert it into the USB port to upgrade.

Indicator light description

The fault	The solution
Unable to display projection	Shut down and reboot
Android crash	Shut down and reboot
Abnormal projection	Shut down and reboot
Remote control cannot trun on	The projector is not connected to the power adapter, it can only be turned off and cannot be turned on.
System prompt the peojector is overheated, or automatic shut-down	Please do not block the front air outlet and rear air inlet mesh, restart
Other system failures	Please contact the after-sales supporting e-mail

Connecting to Wi-Fi

Wi-Fi is a wireless networking technology that can provide wireless Internet access.

1. Enter Home Screen > Wi-Fi.
2. Slide the Wi-Fi switch to the on position to turn on Wi-Fi.
3. The projector will scan for available Wi-Fi networks.
4. Choose a network name to connect to it.
5. If the network is secured, enter the password and enter Connect.

NOTES: Your projector automatically connects to the previously used Wi-Fi network when they are in range. When Wi-Fi is connected, your projector can notify you by showing * (📶) in the status bar.

Adding a Wi-Fi network

You can add a Wi-Fi network if the network does not broadcast its name (SSID), or add a Wi-Fi network when you are out of range. To connect to a secured network, you first need the security details from the network administrator.

Sharing your device as a Wi-Fi Hotspot

You can share your device with other devices by turning your projector into a Wi-Fi hotspot.

Connecting to Bluetooth

Bluetooth is a short-range wireless communication technology. Phones or other devices with Bluetooth capabilities can exchange information wirelessly.

1. Enter Home Screen > Bluetooth.
2. Slide the Bluetooth switch to the on position.

NOTES: When Bluetooth is on, the will appear in the status bar.

Changing the Device name

1. Enter Home Screen > Bluetooth.
2. Slide the Bluetooth switch to the on position to turn on Bluetooth.
3. Set name and password.
4. Enter Save.

Notice

1. When using the projector, please do not watch the lens directly to avoid damage to the eyes.
2. Please do not use in hot and humid environment.
3. Please do not block the air outlet or air inlet.
4. Install away from the wall in order to maintain the performance and feasibility of the projector, please leave at least 30cm between the projector and the wall.

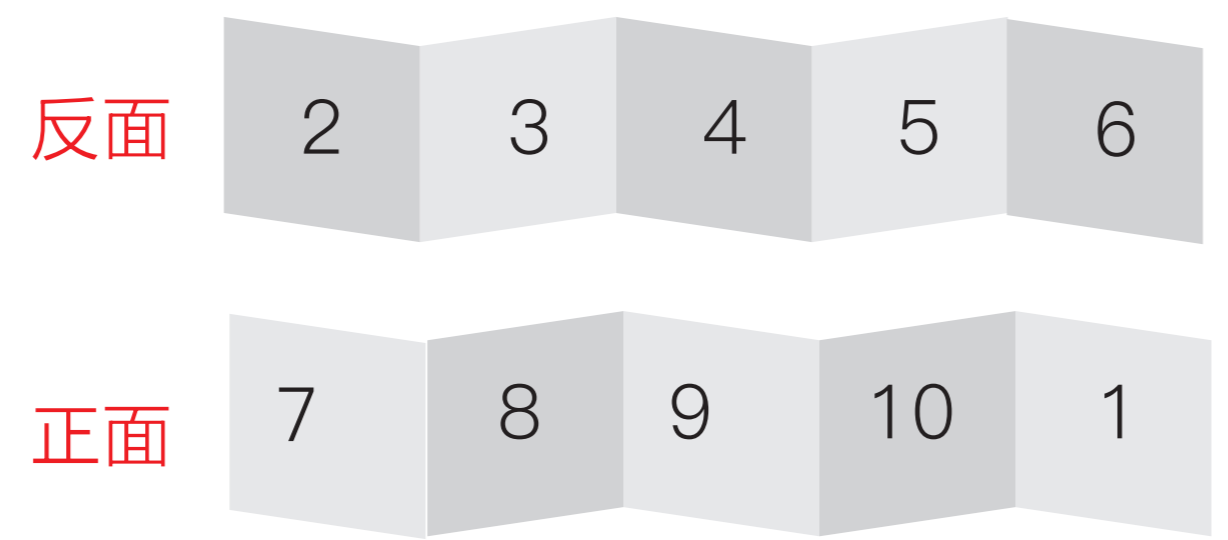
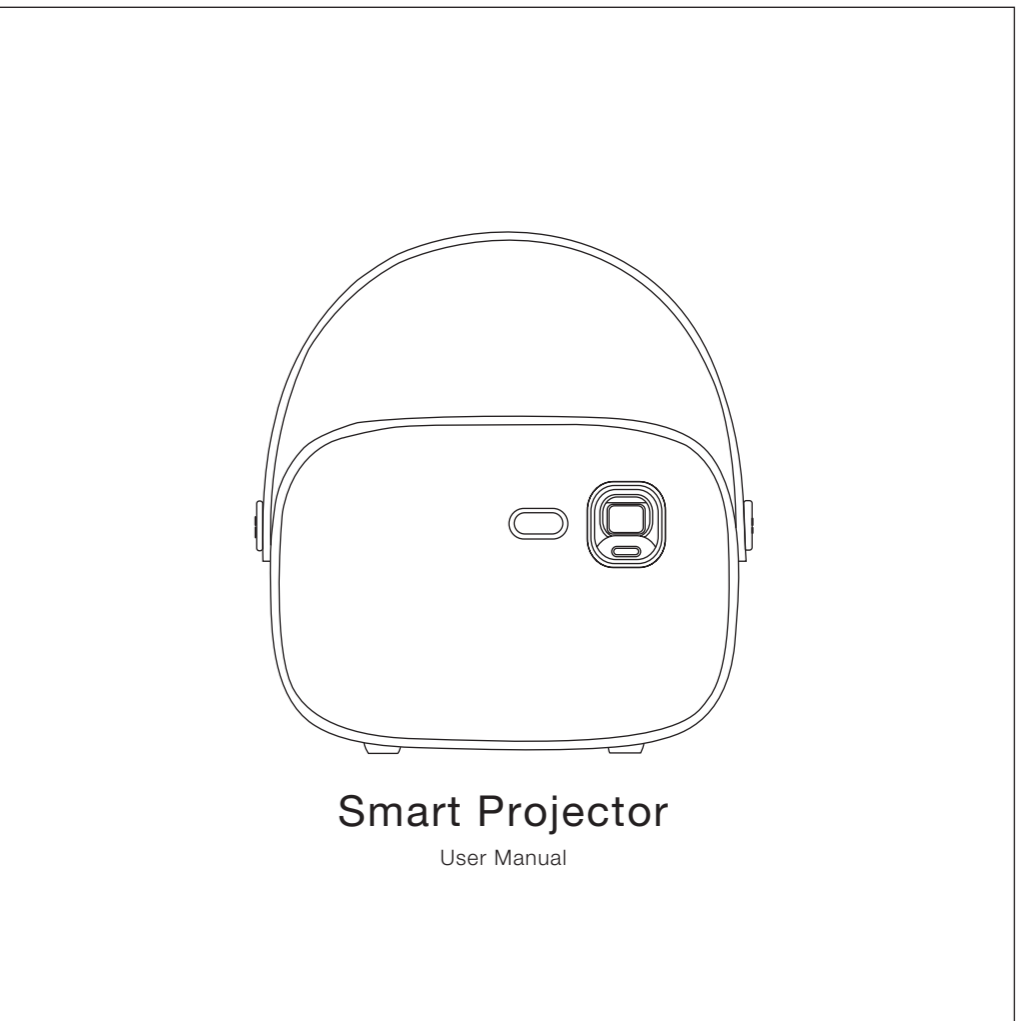
Warning:

- * Block the projector Vented slits and openings.
- * Wipe the device with a scrub, paraffin or solvent.
- * Used under the following conditions:
 - Extremely hot, cold or humid environment.
 - Ensure indoor temperature is between 5-40°C.
 - Relative humidity is 80% maximum at 5-40°C, no condensation.
- Areas susceptible to large amounts of dust and dirt.
- Near any equipment that produce strong magnetic field.
- Sunlight exposure directly.
- The product is suitable for non-tropical climate.

Note: Without the agreement of brand manufacturer, user disassembles the product, violently squeezes or impacts, uses in high temperature, high pressure, flammable and explosive environment, and uses the non-compliant method to charge the projector (for example, the projector requires 5V charging, user uses 9V or other high voltage charging) and other product damaged issues such as battery leakage, burning and other product quality and safety issues which is caused by human improper factors, the brand manufacturer does not bear any responsibility!

The color, appearance and specifications of this product are subject to the actual product and may change without notice due to performance improvement.

SAFETYINSTRUCTION: The projector built-in battery, do not use in high temperature and high humidity conditions. Product sit idle for a long time, ensure that three month a charge!



材质：105G铜板纸白色
4页风琴折双面印
折前尺寸：540*135mm 折后尺寸：135*135mm
字色：CMYK=231815