

yoose

yoose

MINI FROM YOOSE

YOOSE TRENDYLAB

TRENDY & PORTABLE

202X SS

T1

TRIPLE

SHAVER

INSTRUCTION MANUAL

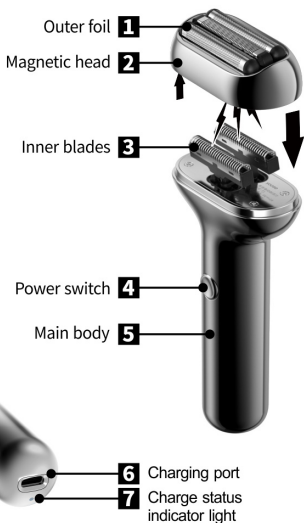
IPX7 WATERPROOF
FOR WET & DRY USE

MINI SHAVER
TRENDY & PORTABLE

PORTABLE

yoose

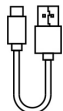
PRODUCTS



yoose

**TRIPLE
SHAVER**

WHAT'S INCLUDED



Product Name	YOOSE Electric Shaver
Model	T1-C
Origin	CHINA
Manufacturer	Shenzhen XIVOLIFE Technology Co. LTD
Charging Time	90 minutes
Battery Capacity	700mAh
Rated Working Voltage	3.7V
Rated Charging Voltage	5V
Power Rating	3W
Address	Floor 2, Building 7, Zhiheng Industrial Park, No. 15, Guankou 2nd Road, Anle Community, Nantou Street, Nanshan District, Shenzhen
Official Website	www.yooseotech.com
After-sales Service E-mail	global@xivolife.com

ENGLISH

IMPORTANT SAFETY INSTRUCTIONS

When using an electric product, basic precautions should always be followed, including the following:
Read all instructions before using this product.

DANGER

To reduce the risk of electric shock:

- Do not reach for a corded product or charging cable that has fallen into water.
- Keep the power cord dry.
- This product does not work while charging.
- Please make sure the product is switched off before cleaning.
- Do not use hot water, salt water, alcohol, thinner or other chemicals to clean the product.

WARNING

To reduce the risk of burns, fire, electric shock, or injury to persons:

- Close supervision is required when this product is used by, or near children, or persons with limited physical, sensory, or mental capabilities or invalids.
- Never operate this product if it has a damaged power cord, if it is not working properly, after it has been dropped or damaged.
- Keep the power cord away from heated surfaces.
- Never drop or insert any object into any opening.
- Always check shaving heads (Razor head and blade net) before using the product. Do not use the product if cutters or caps are damaged, as injury may occur.
- Do not use an extension cord.
- Unplug power cord before plugging in or unplugging the product.
- Do not attempt to open the product to remove or replace the built-in rechargeable battery.
- The batteries used in this product may present a fire or chemical burn hazard if mistreated. Do not disassemble, heat above 100 °C (212 °F) or incinerate.

BATTERY SAFETY INSTRUCTIONS

- Charge, use and store the product at a temperature between 5 °C and 35 °C.
- Do not burn products and their batteries and do not expose them to direct sunlight or to high temperatures. Batteries may explode if overheated.
- If the product becomes abnormally hot, gives off an abnormal smell, changes color or if charging takes much longer than usual, stop using or charging the product and contact us.
- Do not place products and their batteries in microwave ovens or on induction cookers.
- When you handle batteries, make sure that your hands, the product and the batteries are dry.
- To prevent batteries from heating up or releasing toxic or hazardous substances, do not modify, pierce or damage products and batteries and do not disassemble, short-circuit, overcharge or reverse charge batteries.
- To avoid accidental short-circuiting of batteries after removal, do not let battery terminals come into contact with metal object. Do not wrap batteries in aluminum foil. Tape battery terminals or put batteries in a plastic bag before you discard them.
- If batteries are damaged or leaking, avoid contact with the skin or eye. If this occurs, immediately rinse well with water and seek medical care.

FUNCTION

Power on	Press the on/off button once to switch on the shaver. The default mode is standard mode.
Mode switch	Press and hold the on/off button for 1 second when the device is switched on to shift between strong/standard mode.
Switch off	When powered on, press the on/off button to switch off the shaver.
Waterproof	IPX-7
Power-off protection	The shaver will automatically switch off after continuously working for 10 minutes.
Function memory	If you switch off the shaver in standard mode, the device will enter standard mode next time you switch it on. If you switch off the shaver in strong mode, the device will enter strong mode next time you switch it on.
Charging indicator	Charging status: The LED indicator turns into white breathing state (gradual lighting, full lighting and fading within 2.6 seconds). Fully charged: The LED indicator lights up white Charging needed: The LED indicator flashes red

TRIPLE

SHAVING

1. It is normal that the skin may be mildly irritated during the first few shaves. It is recommended to use the shaver regularly within 3 weeks to get your skin accustomed sooner.
2. Press the on/off button once to switch on/off the shaver. The default mode is standard mode. Please gently press and slowly move the shaving heads over your face in circular movements. For better shaving experience, please shave against the direction of your beard growth.
3. Press and hold the on/off button for 1 second in the power-on state to switch between strong/standard mode.

TRAVEL LOCK

The shaver is equipped with a travel lock function to prevent misuse during storage/placement by external pressure on the switch.

Travel lock on

Press and hold the on/off button for 2 seconds when the device is switched off to activate travel lock (the shaver heads will rotate twice and the indicator will go off after 1 second).

Travel lock off

Repeat the above steps.

CHARGING METHOD

1. Please make sure the shaver is turned off and the charging port is dry before charging.
2. Please use 5V \equiv 1A / 5V \equiv 2A adapter and Type-C cable to charge.
3. The indicator flashes red when the battery is low, please charge it in time.
4. When charging, the indicator turns into white breathing state. When fully charged, the indicator lights up white.
5. Please do not put the product into the box when charging.
6. The charging time is about 90 minutes. Please disconnect the charger when the shaver is fully charged.
7. The shaver cannot be used when charging.



Type-C charge port

CLEANING

Indicates suitable for use in bath or shower.



Indicates suitable for rinsing under the tap.



1. Please clean the shaver regularly for optimal performance.
2. Please rinse the shaving unit under the tap:
 - a. Remove the shaving unit and rinse the shaving head and the retaining frame separately under the tap.
 - b. Use a brush to clean residues clogged up in the guard and the retaining frame.
 - c. Let it dry after cleaning.



To maintain good shaving performance, it is recommended to replace the shaving unit every six months.

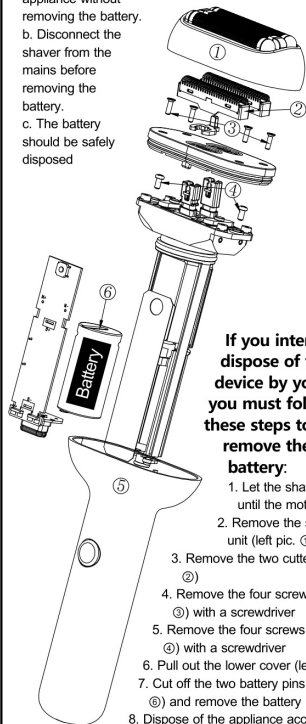
! Switch off the shaver before cleaning

BATTERY REMOVAL

Warning:

Keep the appliance dry

- Do not throw away the appliance without removing the battery.
- Disconnect the shaver from the mains before removing the battery.
- The battery should be safely disposed



If you intend to dispose of the device by yourself, you must follow these steps to remove the battery:

- Let the shaver operate until the motor stops
- Remove the shaving unit (left pic. ①)
- Remove the two cutters (left pic. ②)
- Remove the four screws (left pic. ③) with a screwdriver
- Remove the four screws (left pic. ④) with a screwdriver
- Pull out the lower cover (left pic. ⑤)
- Cut off the two battery pins (left pic. ⑦) and remove the battery
- Dispose of the appliance according to local regulations

TROUBLESHOOTING

Problems	Possible causes	Solutions
The shaver does not shave as well as it used to	The shaving heads are damaged or worn	Replace the shaving heads with the original model
	Residues clog up the shaving heads	Please clean the shaver
	Low battery	Please recharge the shaver
The shaver does not work when I press the on/off button	The on/off button is not working	Return to the after-sales service for repair
	Travel lock is on	Press and hold the on/off button for 2 seconds to unlock
	Circuit failure	Return to the after-sales service for repair
The indicator light does not light up when charging	The charging cable is damaged	Replace the charging cable
	The indicator is damaged	Return to the after-sales service for repair
	Circuit failure	Return to the after-sales service for repair
The shaver takes too long to charge	Battery used up	Return to the after-sales service for repair
	Circuit failure	Return to the after-sales service for repair
My skin is slightly irritated after shaving	It takes some time to allow your skin to adapt to the shaver	Do not apply excessive pressure to your face when shaving. After 2-3 weeks, allergy will disappear as your skin adapts to the shaving system

WARRANTY AND SUPPORT

If you need information or support, please visit
www.yooseotech.com/support or read the manual.

Return Policy

yoose offers 30 days unconditional return service. Within 30 days since the date of purchase, you can contact us to return your product and to be refunded.

To be eligible for a refund, you must:

- Return the product with all accessories and gifts.
- Return them in their original packaging.
- Provide valid proof of purchase.
- Ensure the product and accessories are resalable.

Returns shipping fee:

- Returns for reason of product quality issue, yoose will carry the shipping costs.
- Returns for any reason other than product quality issue, the buyer should carry the shipping costs.
- Returns for any reason other than product quality issue, buyers should assume responsibility for any damage or loss incurred in transport.

yoose

WARRANTY

yoose offers a 1-year warranty on your device. Within 1 year from the date of purchase, if your device does not work due to a defect in material or workmanship, we will repair or replace it for you.

The following cases are not covered:

- Purchased from an unauthorized dealer.
- The warranty period has expired.
- No proof of purchase.
- The device has been unofficially modified, altered or repaired.
- Using the device for any purpose other than facial shaving.
- Damage caused by not operating in accordance with the yoose user manual.
- Damage caused by any misuse or accident.
- Damage caused by overuse that is considered normal wear and tear.

Main Body	12 Months
Charging Cable	12 Months

Warranty restrictions: The shaving heads (cutters and guards) are not covered by the terms of the international warranty because they are subject to wear.

