

Contents

1. Important of Safety Information..... 01

1.1 Notes before Using..... 01

1.2 Use Restrictions..... 01

1.3 Warning & Caution..... 02

2. Product Diagram..... 04

2.1 Automatic Pet Feeder..... 04

2.2 Bottom..... 05

2.3 Control Panel..... 05

3. How to Use..... 06

3.1 Assembling Pet Feeder..... 06

3.2 Placing Desiccant Bag..... 06

3.3 Connecting Power..... 07

3.4 Filling Food Tank..... 08

3.5 Waking Up..... 08

3.6 Setting the Time..... 09

3.7 Setting the Meals Per Day..... 09

3.8 Setting the Time & Portion of Meals..... 10

3.9 Recording a Meal Call..... 11

3.10 Reset the Device..... 11

3.11 Manually Feeding Your Pet..... 12

3.12 Battery Installation..... 12

4. Cleaning & Care..... 13

4.1 Disassembling the Food Tank..... 13

4.2 Disassembling the Food Tray..... 15

4.3 Cleaning All the Parts..... 15

5. Troubleshooting..... 16

6. Specification..... 17

7. What's in the Box..... 18

8. Warranty..... 19

1. Important of Safety Information

1.1 Notes before Using

- Please read all safety instructions before operating the pet feeder.
- Please read and observe all warnings listed on the pet feeder and in the packaging.
- Make sure that all electrical connections are kept clean and dry.
- Make sure that the pet feeder is placed on a stable, flat, and dry ground.
- This product is intended for household use only.
- Kaikoe is not responsible for any damage or injury caused by improper use.

The symbol on the product or its packaging indicates:

Do not dispose of electrical appliances as unsorted municipal waste and use separate collection facilities. For information on available collection systems please contact your local authorities. If appliances are disposed of in a landfill or rubbish dump hazardous substances can leak into groundwater and enter the food chain damaging your health and well-being. Please contact your local or regional waste authority for more information on collection reuse and recycling schemes.

1.2 Use Restrictions

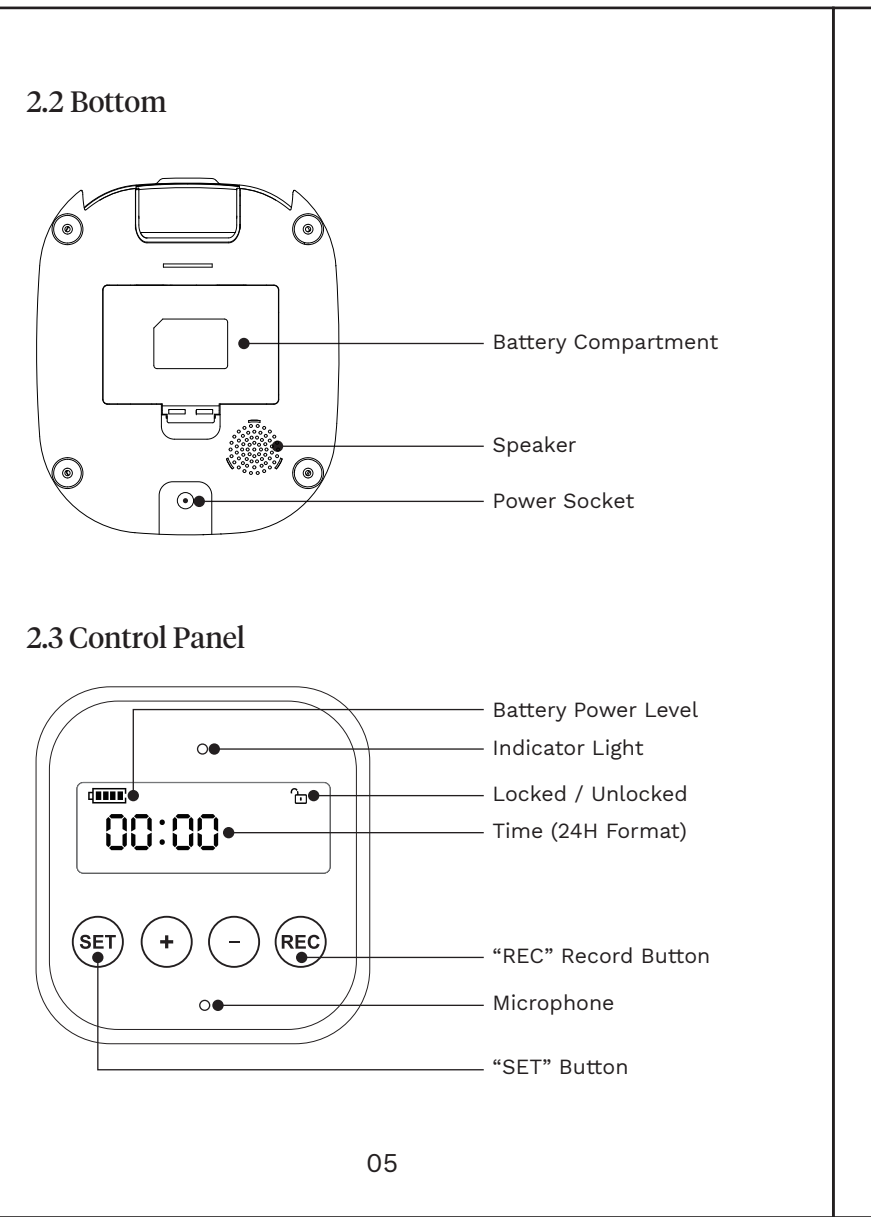
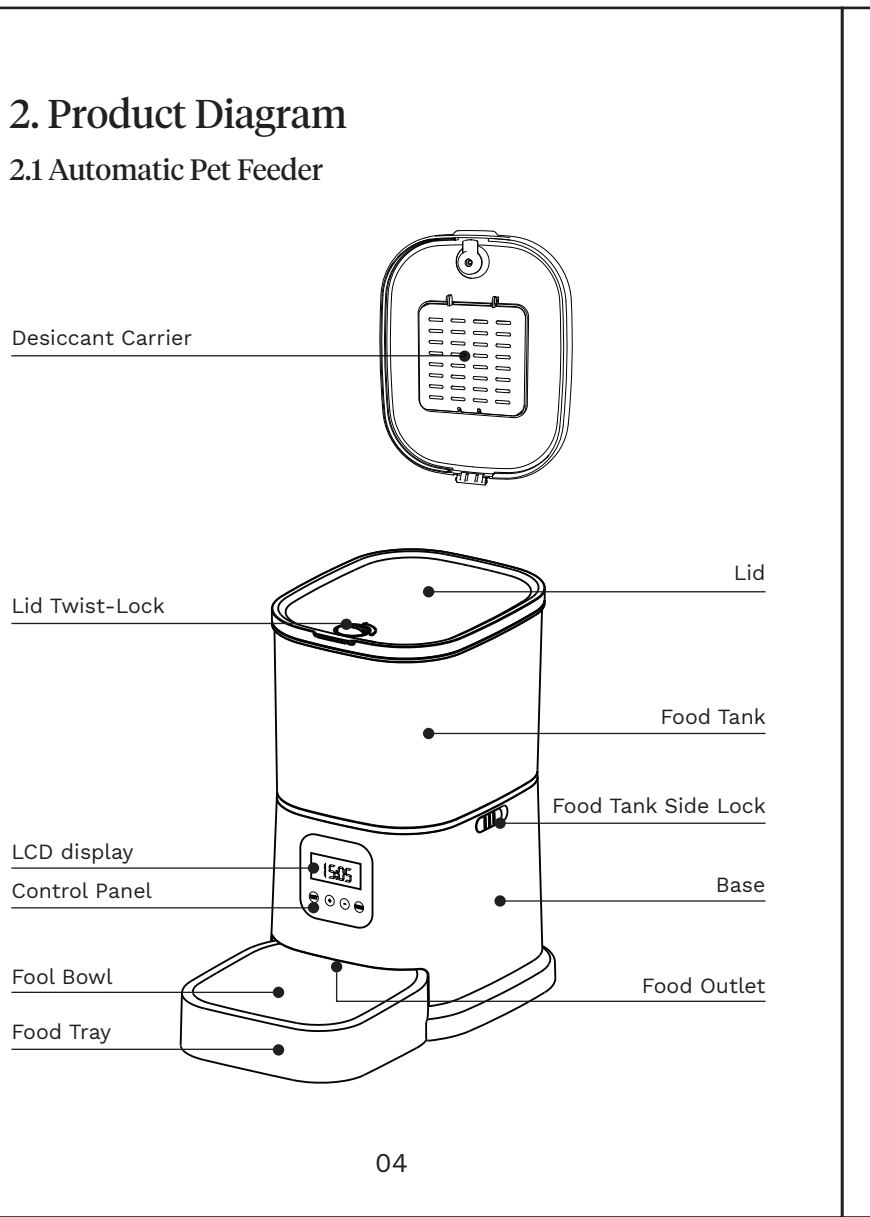
- Do NOT pull on the electrical power cord to remove the plug from the wall outlet.
- Do NOT attempt to unplug if the plug gets wet, turn off electricity to that wall outlet.

- Do NOT put or insert foreign objects into the pet feeder.
- Do NOT place anything on top of the pet feeder.
- Do NOT use alcohol, toluene, and other solvents to wipe the pet feeder.
- Do NOT use this product in areas where flammable or combustible gases or liquids may be present.
- Do NOT immerse the base part in water at any time as it may damage electronic components like the control panel.
- Do NOT disassemble the unit other than as instructed in this User Manual.
- Do NOT place or store the pet feeder where it will be exposed to weather or temperature below -20°C/-4°F.
- Do NOT install or place the pet feeder near any heat source.
- Do NOT use the device if you find any damage on any part of the adapter or power cord.
- Do NOT allow small children to play with, in or around the pet feeder.
- Do NOT eat desiccant.
- Do NOT use the desiccant if it is broken or swollen.
- Do NOT use outdoors.

1.3 Warning & Caution

- Examine the feeder after installation. Do not plug in if there is water on the power cord or plug.
- Please never handle the power supply with wet hands.
- To avoid tripping, always position power cord out of the way of foot traffic.

- Please do not lift the pet feeder by lid, food tank, or food tray. Lift and carry it using both hands and the base, while keeping the unit in an upright position.
- Use alkaline D batteries to power. Do NOT use rechargeable batteries.
- Check the batteries regularly.
- Remove the batteries from the pet feeder before long-term storage.
- Shut down the power supply and pull out the plug when device not in use.
- Do NOT place or store the pet feeder where it is recommended size is between diameter 2mm to 12mm.
- Please keep plastic bags away from babies and children to avoid the risk of suffocation.



3. How to Use

3.1 Assembling Pet Feeder

3.2 Placing Desiccant Bag

- Rotate lid twist-lock to open the lid.
- Place the desiccant bag in desiccant carrier.

3.3 Connecting Power

Note:

- Make sure all parts are completely dry.
- Make sure handle with dry hands.

3.4 Filling Food Tank

- Fill food tank with dry pet food.
- Close the lid, and rotate lid twist-lock to secure.

Note:

- Do not fill with wet, or moist pet food.
- Recommended food size range from 2mm-12mm.

3.5 Waking up

- Press and hold the "SET" button for 3 seconds to unlock the screen.
- No operation for 20 seconds, the screen will be auto locked and dark.

3.6 Setting the Time

Hour Minute

- Press and hold "SET" button for 3 seconds, and then the time section "00:00" begins to blink.
- Short press "SET" to select the hour or minute section.
- Short press "+/-" to select the desired figures.

Note:

Please set device time accordingly with your local time for more precise feeding time.

3.7 Setting the Meals Per Day

First meal

After the current time is set, an unlock screen state.

- Press and hold "SET" for 3s to unlock the screen.
- Short press "+" enter to first meal feeding setting.
- Press "+/-" to set 1-4 meals per day.

3.8 Setting the Time & Portion of Meals

Portions of food

- Press and hold the "SET" button for 3 seconds to unlock the screen.
- Short press "+" to start the first meal feeding setting, the LCD display will show the current time, meal number, and portion number.

Setting the time of first meal

- Press "+/-" button to set the desired hour.
- Short press "SET" button and "+/-" button to set the desired minute (ditto).

Setting the portions of the first meal

- Short "SET" button to start the portion setting, Portion number begins to blink.
- Press "+/-" button to set your desired portion of current meal.
- Press "SET" button to complete first meal setting.

Setting 2nd to 4th meals

- Press "+" button to start a new meal setting.
- Repeat above process to set 2nd to 4th meals based on your personal needs.

Note:

- Meals: 1-4, Portions: 1-9
- Contact Kaikoe customer service support at support@kaikoe.com to get video guide if need.

3.9 Recording a Meal Call

On unlock screen state,

- Press and hold the "REC" button until a "BEEP" is heard to start recording (hold on the "REC" button).
- Record your voice for less than 10 seconds.
- Release the "REC" button, the device will "BEEP" when recording is saved.
- One portion will be fed each time.

Note:

Regularly feeding schedule and portion will not be affected when manually feeding.

3.10 Reset the Device

On lock screen state,

- Press and hold "+" button for 5 seconds to reset the device.

3.11 Manually Feeding Your Pet

- Simultaneously press "SET" and "+/-" button when the screen is unlocked (press and hold the "SET" button for 3s to wake up).
- One portion will be fed each time.

Note:

The washable parts include: pet feeder lid (desiccant bag should be removed), food tank, food tray, and stainless steel food bowl, which can be submerged in water to wash and clean.

3.12 Battery Installation

Battery Compartment

- Open the battery compartment at the bottom of the device.
- Install 3 alkaline D batteries (not included).
- Cover the battery compartment.

Note:

- Do not install the battery backwards.
- Do not use rechargeable batteries.
- Dual power supply, battery power enables when power supply disconnected.

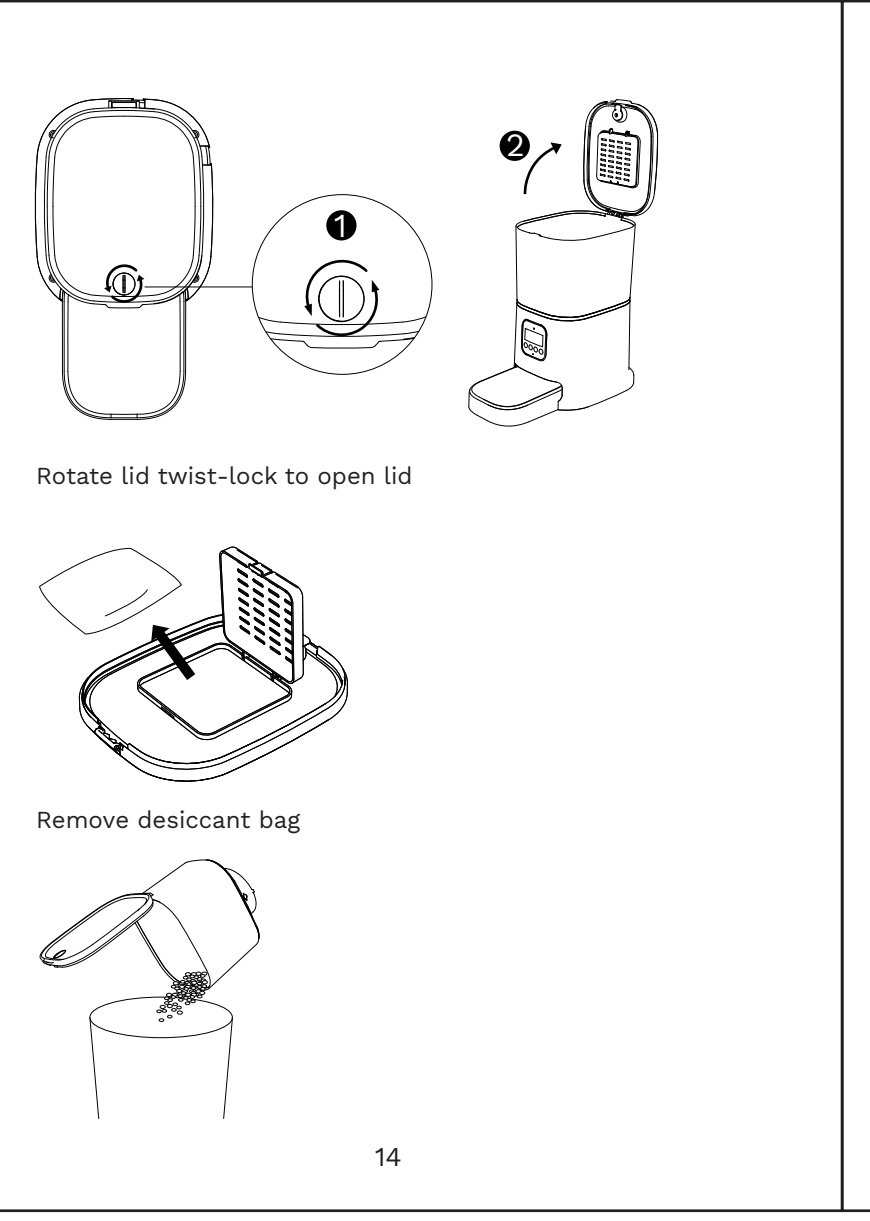
4. Cleaning & Care

It's recommended to clean the pet feeder regularly for the health of your pet.

The washable parts include: pet feeder lid (desiccant bag should be removed), food tank, food tray, and stainless steel food bowl, which can be submerged in water to wash and clean.

4.1 Disassembling the Food Tank

Slide both side locks on the food tank, push the tank upward to disassemble.



5. Troubleshooting

Problem	Solution
The food won't come out.	1) Ensure that fill the pet feeder with dry food; recommended food size between 2mm to 12mm. 2) Check whether any objects are stuck: disassemble the food tank, manually clean the food outlet rotor and food outlet. 3) Check whether the device in low battery power level - replace with new batteries. 4) Check whether the power adapter is disconnected - ensure the power adapter is connected. 5) Check whether there is any outage when no backup battery power installed. Contact Kaikoe support team if problem still exists.

6. Specification

Model	PT03K
Food tank capacity	6 liters
Meals	4 meals per day
Portions	9 grams per portion (Max. 9 portions per meal)

Problem	Solution
The food won't come out.	1) The screen is locked and dark when there is not operation in 20s, please press and hold the unlocked button for 3s to unlock the screen. 2) Check whether the power adapter is connected. Contact Kaikoe support team if the LCD display still won't light up when the device is well connected to power.
I forgot the meal settings	Press and hold "SET" button for 3s to unlock the screen, short press "+" to check your meal numbers.
I cannot hear any voice recordings when feeding.	Make sure you've recorded successfully -unlock the screen, press "REC" button to check, if no sound is heard, please record again. Contact Kaikoe support team if problem still exists.

7. Specification

Screen	LCD screen
Power	DC 5V power adapter; 3x alkaline D batteries (not included)
Power adapter	AC 100-240V input, DC 5V output
Operating temperature	-20°C - 60°C / -4°F - 140°F
Dimension	190x340x320mm / 7.48x13.39x12.60 inch
Weight	1.7kg /3.75 lb

	Automatic pet feeder x1
	BPA-Free plastic tray x1
	Stainless steel food bowl x1

8. Warranty

We provide a 1-year warranty for Kaikoe automatic pet feeders.

One-year Warranty

This 1-year Limited Warranty applies to purchases made from authorized retailers of Kaikoe, and implied warranties will be limited to the duration of limited warranty. Warranty coverage applies to the original owner and to the original product only and is not transferable.

Kaikoe warrants that the unit shall be free from defects in material and workmanship for a period of one year from the date of purchase when it is used under normal household conditions and maintained according to the requirements outlined in this User Manual, subject to the following conditions and exclusions.

Exclusion

Unless agreed in writing the Warranty will not apply if the defect(s) relate to:

- Use of parts not in accordance with the product instructions.
- Defects caused by rough or inappropriate handling or use or damage caused by accident, misuse, neglect, fire, water, lightning or other acts of nature, external sources such as weather.
- Improper operation or maintenance, use not in accordance with the product instructions or connection to improper voltage supply.
- Negligent use or care, neglect, or careless operation or misuse of the product.
- Accident, abuse, misapplication, or any unauthorized repair, modification or disassembly or opening of the chassis of the product.
- Any failure by Buyer or a third party to comply with environmental and storage requirements for the device specified by Seller.
- Use of parts and accessories other than those produced or recommended by Kaikoe.
- Any product(s) purchased from unauthorized dealers/resellers.
- Free products.
- Lost and/or stolen products.

Please contact Kaikoe customer support team at support@kaikoe.com or on +1 (855) 825 2015 (TOLL FREE call) if you have any questions.

conditions and maintained according to the requirements outlined in this User Manual, subject to the following conditions and exclusions.

Exclusion

Unless agreed in writing the Warranty will not apply if the defect(s) relate to:

- Use of parts not in accordance with the product instructions.
- Defects caused by rough or inappropriate handling or use or damage caused by accident, misuse, neglect, fire, water, lightning or other acts of nature, external sources such as weather.
- Improper operation or maintenance, use not in accordance with the product instructions or connection to improper voltage supply.
- Negligent use or care, neglect, or careless operation or misuse of the product.
- Accident, abuse, misapplication, or any unauthorized repair, modification or disassembly or opening of the chassis of the product.
- Any failure by Buyer or a third party to comply with environmental and storage requirements for the device specified by Seller.
- Use of parts and accessories other than those produced or recommended by Kaikoe.
- Any product(s) purchased from unauthorized dealers/resellers.
- Free products.
- Lost and/or stolen products.

Please contact Kaikoe customer support team at support@kaikoe.com or on +1 (855) 825 2015 (TOLL FREE call) if you have any questions.