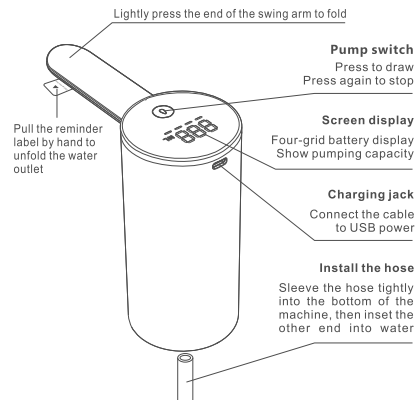


# Folding Water Dispenser User Manual

## Product Introduction



## Product specification

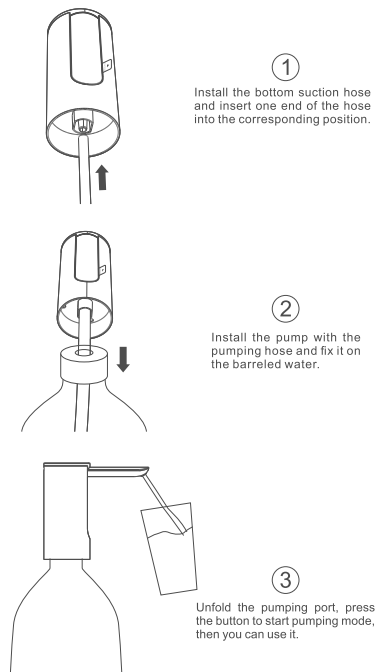
Product Name: Folding water dispenser  
Input: DC5V=0.8A  
Battery Capacity: 1800mAh  
Dimension: 63.8X63.8X133.8 MM  
Weight: 210g  
Made In China **RoHS** **FC** **CE** **UK** **CA** **RE**

## Product Warranty

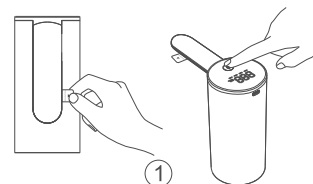
- This product with non-artificial quality problems from the date of purchase, will have 60-day free warranty.
- During the warranty period, if happen to below conditions, the warranty rights will not be entitled:
  1. Product failure or damage caused by disassembly and repair without the approval of our company.

2. Failure due to improper use, such as liquid injection, external force squeezing, falling damage, etc.
  3. Damage caused by natural disasters and force majeure.
- Please keep this card properly as a warranty certificate. Failure to provide this card is deemed to be out of the warranty period, and certain materials and maintenance fees will be charged.

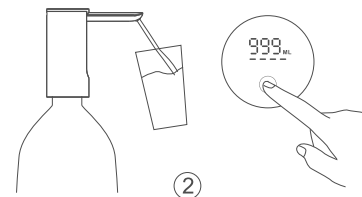
## Steps for installation



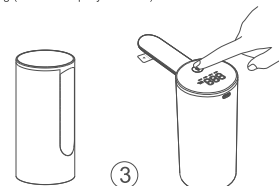
## Instructions



It will turn on automatically while unfold the water outlet, or long-press the touch button to turn it on manually when the water outlet is unfolding.  
Screen display: 000ML and current battery

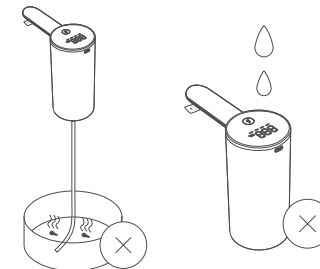


**Pumping (power on state):**  
Touch the button to start pumping (screen display: current water output)  
Press the button again to stop pumping (screen display: current water output)  
Single pumping reaches 999ML, it will automatically stop pumping (screen display: 999ML)



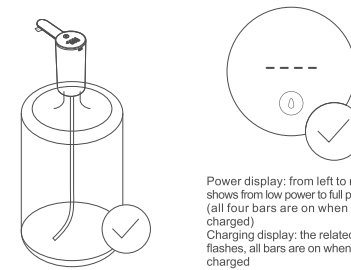
Automatically power off when the water outlet is folding (screen display: full lights flashes 2 times and then turn off)  
Long-press the button to turn it off manually when the water outlet is unfolding (screen display: be off)  
Automatically power off when the battery is low (screen display: be off)

## Pay attention



This machine can only be used to draw water at 5-40°C

This machine is not washable



This machine can be installed on standard barreled water

**Power display:** from left to right, shows from low power to full power (all four bars are on when fully charged)  
**Charging display:** the related bar flashes, all bars are on when fully charged  
**Low battery indicator:** the first bar on the left flashes (remind: need to be charged)

**Sleeping mode:**  
When there is no operation in 2 minutes, it will automatically enter into the sleeping mode to save power (screen display: be off)  
Touch the button to wake up (screen display: 000ML and current battery)  
Tap the button again: start pumping, stop pumping

Thank you for choosing this product  
Please read this manual carefully before using this product