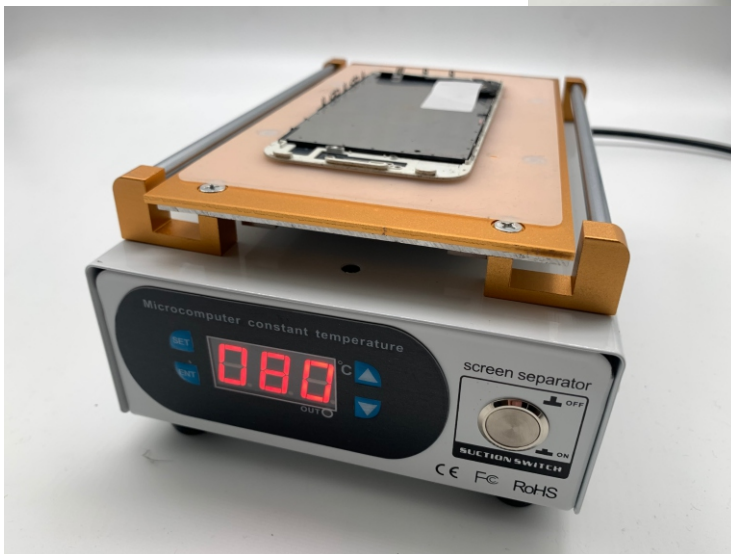
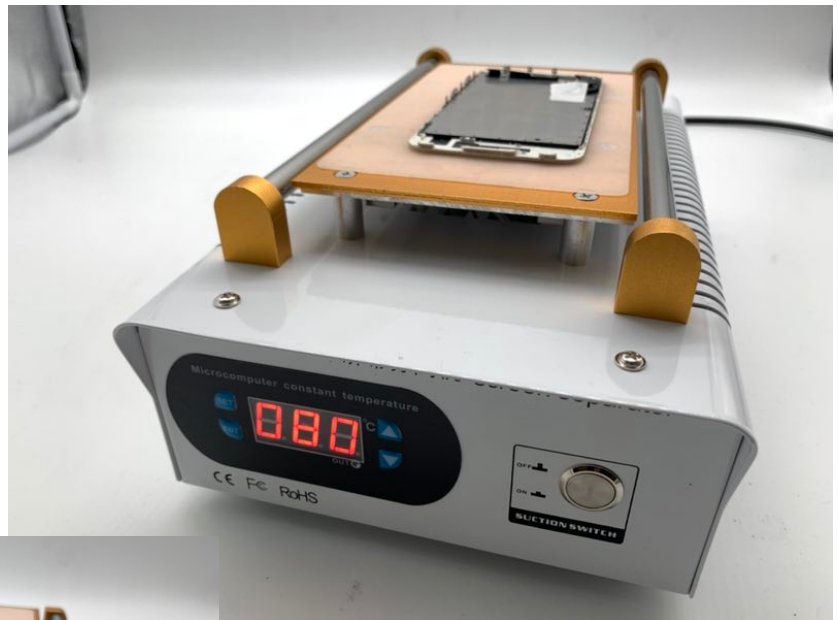


High Quality LCD Screen Repair Separator Machine

Thank you for the purchase and use the products, please read carefully all the contents of this instruction before use, to ensure and proper use of the product.



Instruction Manual

Item Description:

Product Name: LCD Screen Repair Separator Machine

This Machine helps people to separate OCA glue between LCD and screen glass, using this machine, you can separate the broken glass from LCD and if LCD is still working well, you just need to replace a Glass screen. No need to use a full expensive assembly screen to replace them, as that is too expensive.

Heating plate is made of integrative alloy-aluminum with good and well-distributed heat conduction, and won't easy out of shape although under - high temperature.

With 4 adjustable fixed tools to hold your replacement parts on the machine firmly.

With LED display, you can get the clearly Temperature information on it

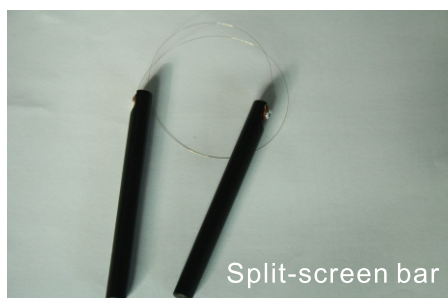
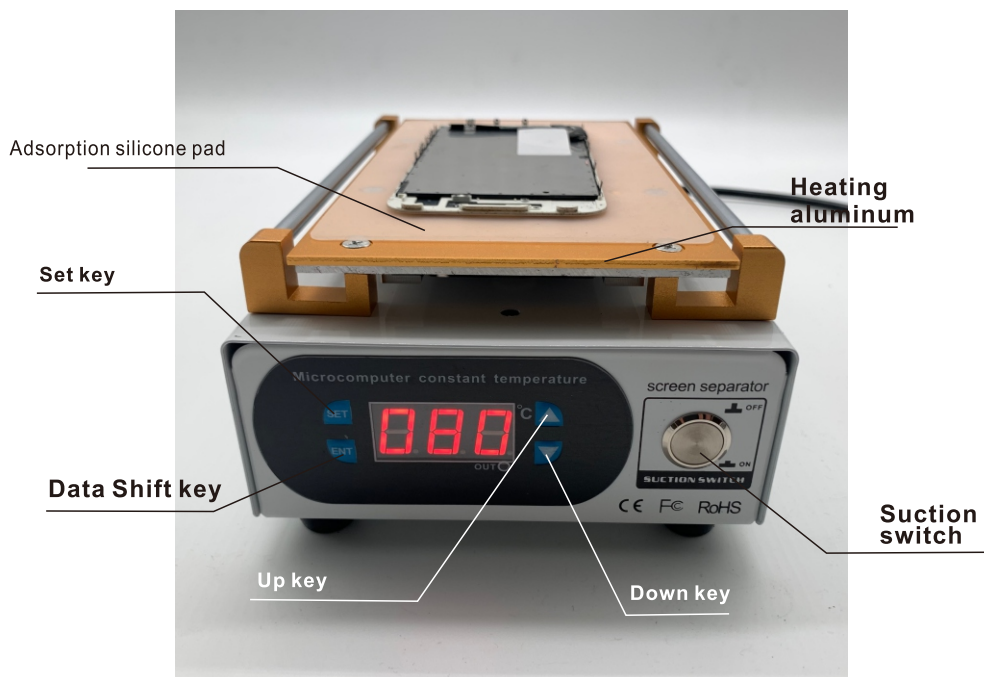
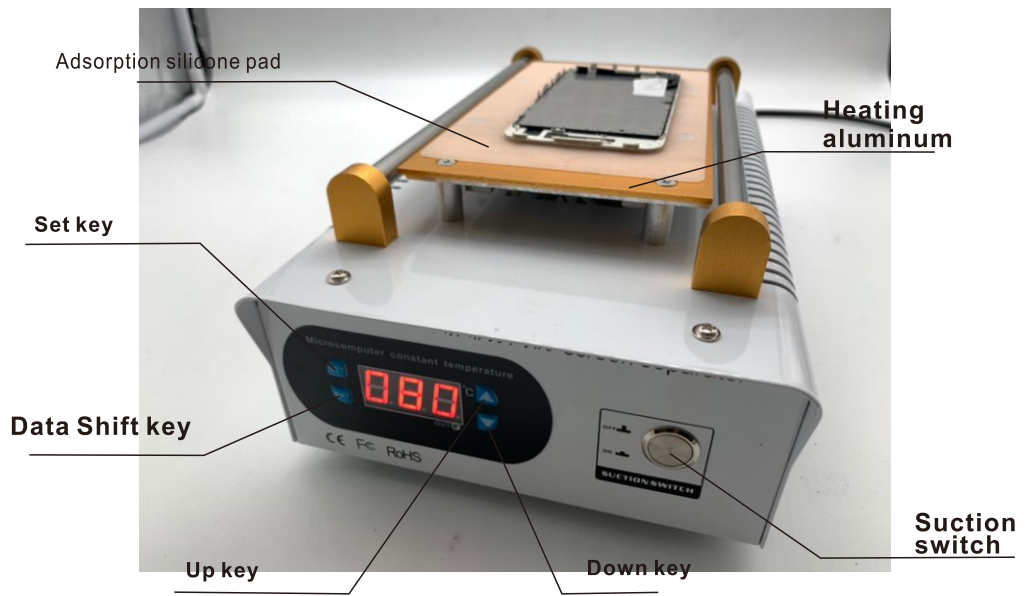
Application Range: Separation the different cover plate, LCD and so on.

Notice

- 1. Please make sure the ground electrode connects well before using.**
- 2. Please don't let the airflow blows the heating plate directly, which can reduce the heating ability of the screen separator.**
- 3. Do not produce the heat more than 110 degree when operating; otherwise the high temperature may destroy the LCD Screen.**
- 4. Bakelite of the item will emit little hazardous gas working continuously around 100 degree, if possible, please open the windows and doors to make air flow when operating.**
- 5. As different country has different current or voltage standard, we have voltage 220V and 110V for your choice, please choose the right one which meets your country's voltage standard; if you have any questions, and please feel free to contact us at your any convenience.**

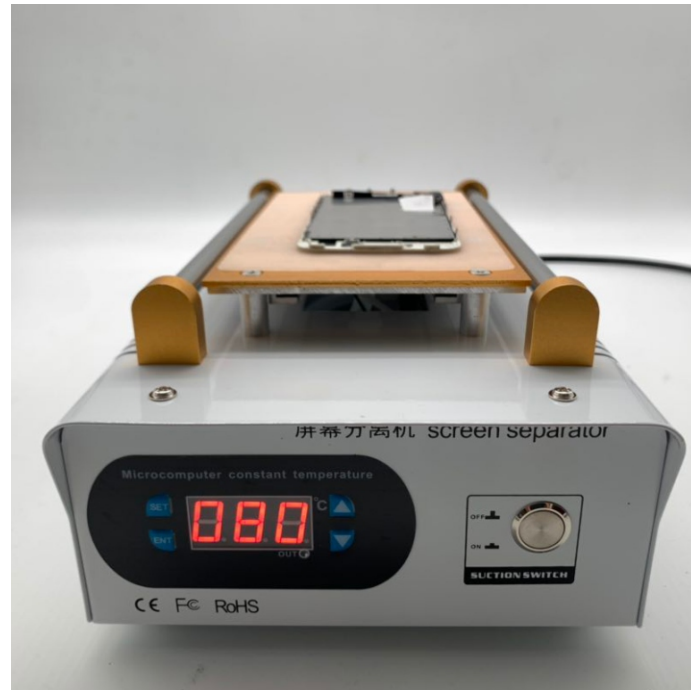
Names of Parts

Names of Parts

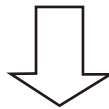


SET TEME

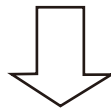
Press the SET button, the screen flashes, press and direct - key to set the desired temperature, then press ENT key.



Press the SET key



Screen Flicker



Press the + or- key



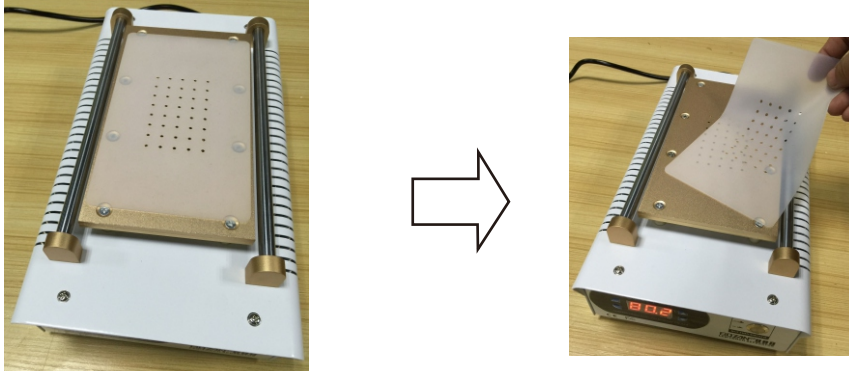
Setting the desired temperature



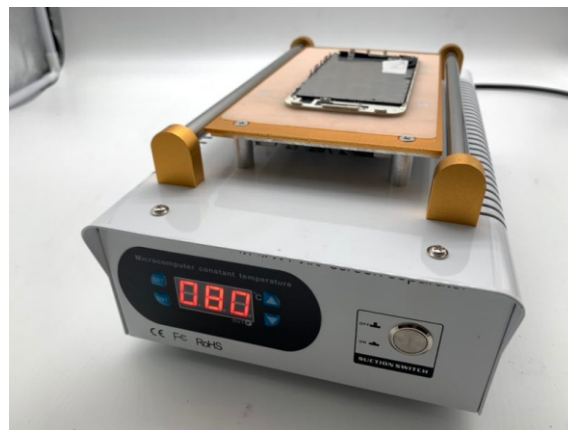
Press ENT to confirm OK

Detach screen operation

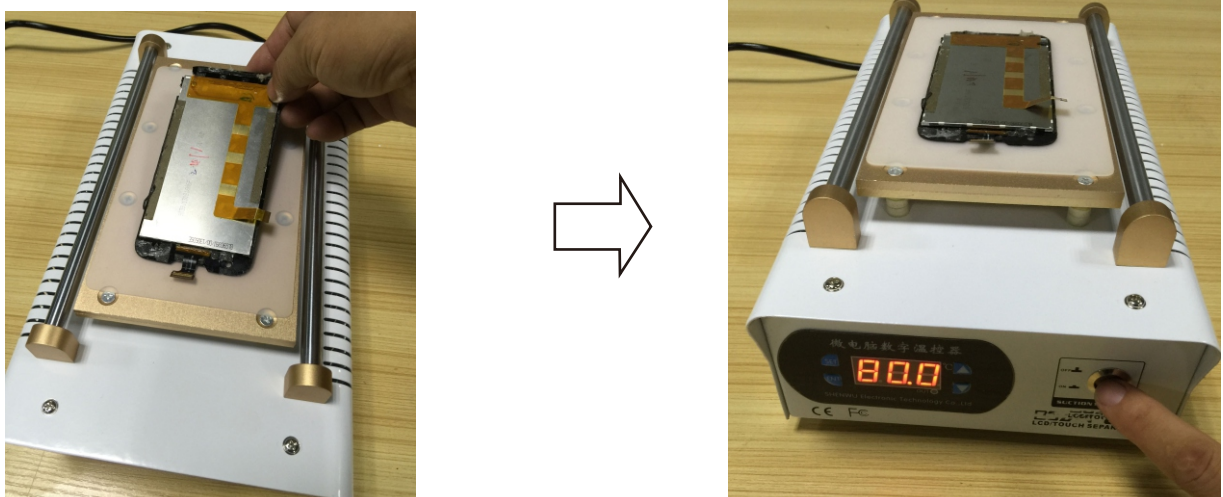
Will enhance the adsorption of silica gel pad is placed on the split screen working plane and aligned holes placed.



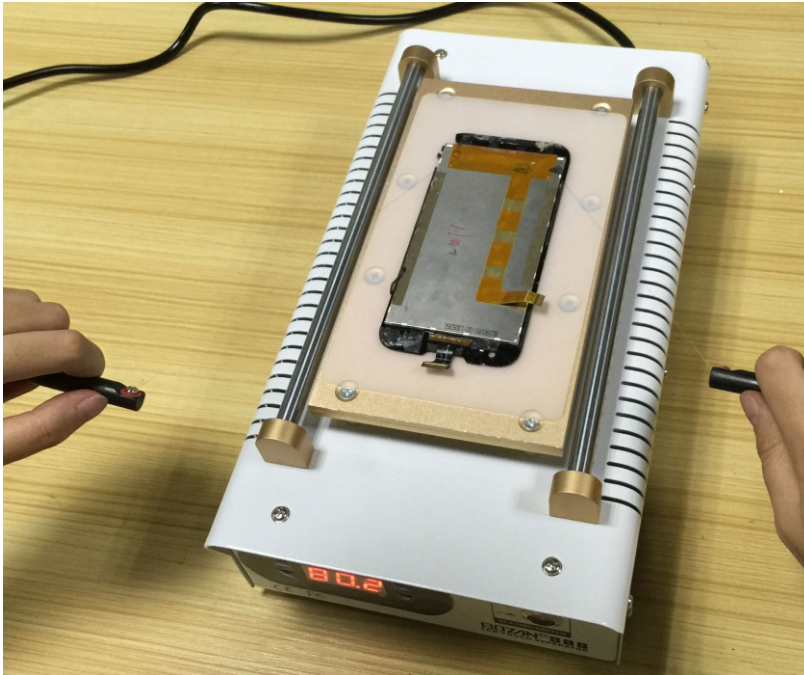
Please plug on and power on, adjust the temperature into a suitable one, the temperature we suggest is 80°C , the screen separator will damage your LCD screen if it is too high.



After entering the temperature, the need for a separate screen on the table, open the vacuum switch.



Separating the separating rods, Pull around.



Warning:

1. When you use the screen separator, please put it on the working table, make sure the table is even flat and the material of the table is heat-resistant.
2. The heating plate is very hot when the screen separator is working, please pay attention to it.
3. Please pay attention to the item you'd like to separate; the item will be damaged if the temperature is too high.
4. Stop using the screen separator besides the flammable and combustible things.
5. You can move or touch the screen separator when you have powered screen separator off and it is cool down.
6. Please power the screen separator off when you needn't use it.

温度与功能设定

1: 设置温度操作: 按一下SET键1秒, 放手, 通过右边的上下键来设置温度, 设置好需要的温度后, 按一下ENT键保存温度,

2: 内部菜单功能介绍: 长按住SET键5秒不动, 放手, 显示如下: RL1再按一下SET键: 显示屏 显示030=无作用

每按一下END=数码管显示菜单功能符号,
然后按一下SET=显示菜单的功能 值

如: 按一下END=0FC菜单=001代表在一级菜单的时候, END功能为确认温度键的功能, 如果设置为000则功能=开关温度的功能,

依次显示菜单为:

RT 菜单功能=自整定功能

值=000 (=1为开启自整定控温, 这个已经用不到了, 因为在正常工作状态的时候, 长按住加键5秒=开启自整定, 方便用户自动控温,)

P 菜单功能=P

值=030 (默认=030)

I=菜单功能=I

值=240

D=菜单功能=D

值=060

Rz=菜单功能=Rz

值=25

T=菜单功能=T

值=20

SC=温度修正值

值=0 (假如当实际温度高了2度, 可以按菜单减键 设置为 - 0 2,) (如果温度低了, 就按加键=002)

LCK=菜单功能锁

值=1 (只可以设置温度, 其它的菜单不可以设置,) (值=0时, 所有的菜单都可以设置,)

Functional operation instructions

1. Set temperature operation: Press the "SET" button for 1 second, then loosen hand, adjust the temperature through "Up & Down " buttons on the right. After you set proper temperature, press" ENT" button to save the temperature.
2. Internal menu function introduction: Press the button "SET" for 5 seconds, then loosen hand, it will display "RL1". Press "SET" button again, it will display "030=no effect".
When you press "END" button, it will display menu function symbol.
When you press "SET" button, it will display menu function value.

For example, press "END=OFC & menu=001", it means on the first level menu, you can use "END" button to confirm temperature. If "menu=000", it means you can use the "END" button to turn on or turn off the temperature.

The menu is displayed as follows:

RT menu function = auto-tuning function

Value = 000 (=1 is to turn on the auto-tuning temperature control, this value will not be used because on normal working state. Press "UP" button for 5 seconds = turn on the auto-tuning, it is more convenient to automatically control the temperature.

P menu function = P

Value=030 (default=030)

I=Menu Function = I

Value = 240

D=Menu function=D

Value=060

Rz=Menu function=Rz

Value = 25

T=Menu function=T

Value = 20

SC = temperature correct value

Value = 0 (If the actual temperature is 2 degrees higher, you can press "DOWN" button and set "-02"), (if the actual temperature is 2 degrees lower, you can press " UP' button and set "002".)

LCK=Menu Function Lock

Value = 1 (only temperature can be set, other menus can not be set),
(Value = 0, all menus can be set)