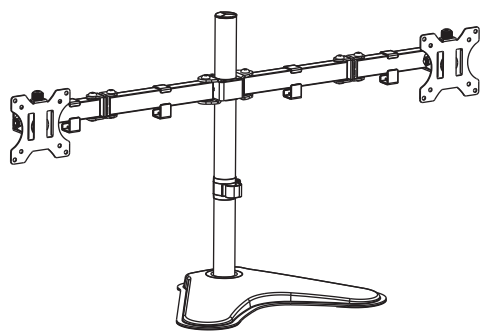


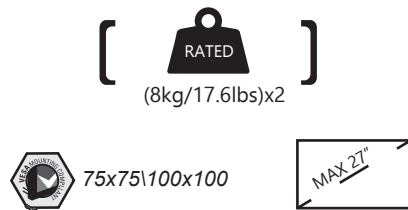


INSTALLATION MANUAL  
Dual Monitor Desk Mount

MF002LM



www.walielectric.com  
support@walielectric.com  
1-844-SATTLER (18447288537)



**⚠ WARNING**

If you do not understand these directions, or if you have any doubts about the safety of the installation, please call a qualified technician. Check carefully to make sure there are no missing or defective parts. Improper installation may cause damage or serious injury. Do not use this product for any purpose that is not explicitly specified in this manual. Do not exceed weight capacity. We cannot be liable for damage or injury caused by improper mounting, incorrect assembly or inappropriate use.

**⚠ TIPOVER WARNING**

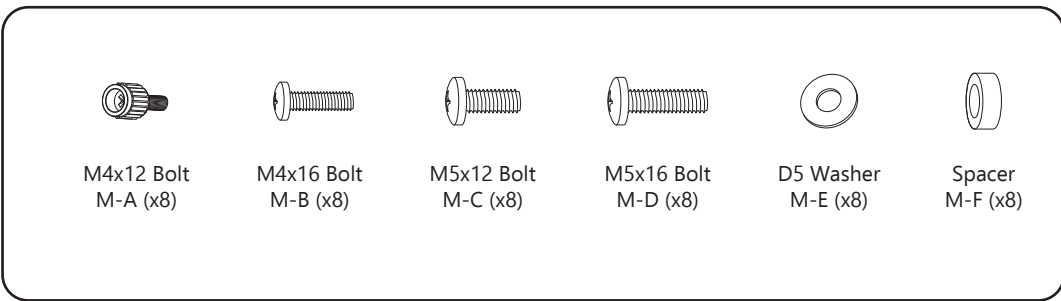
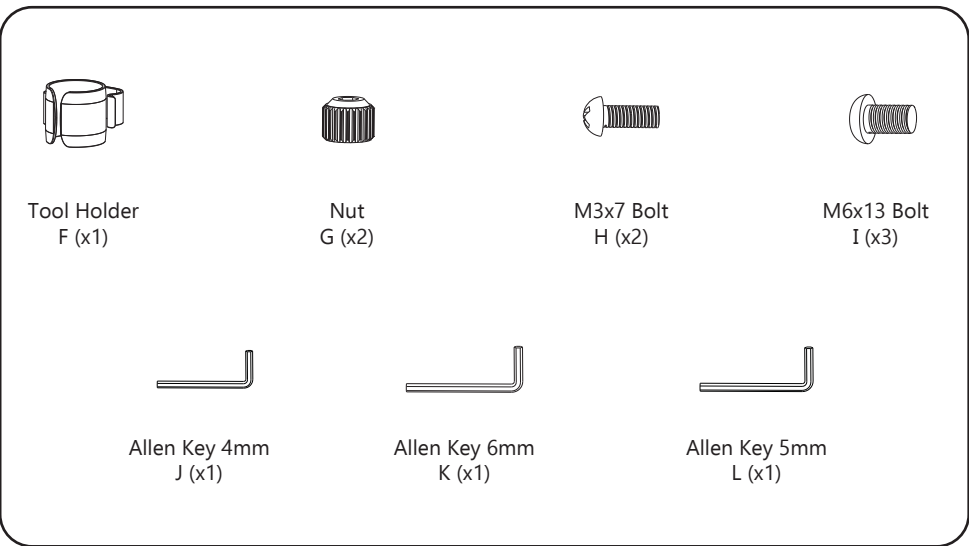
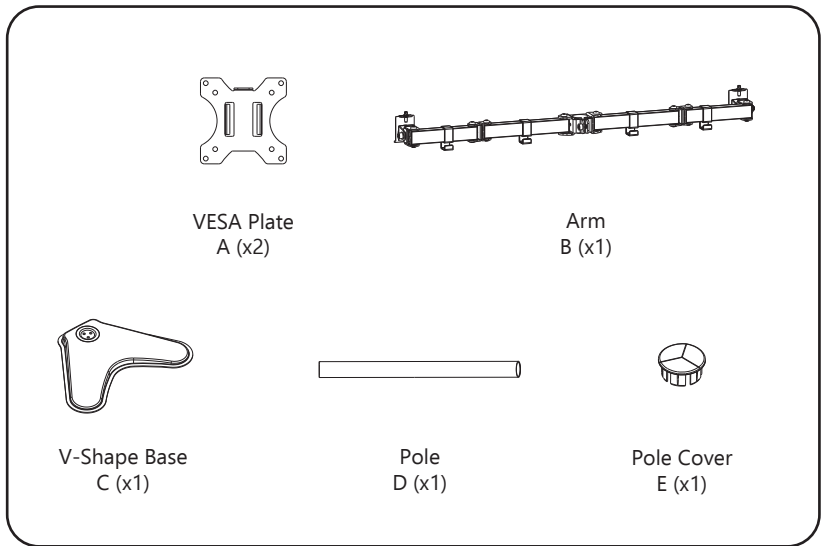
**SERIOUS OR FATAL CRUSHING INJURIES CAN OCCUR FROM TIPOVER. TO HELP PREVENT TIPOVER:**

- NEVER ALLOW CHILDREN TO CLIMB, STAND, HANG, OR PLAY ON ANY PART OF MONITOR OR STAND.
- USE TIPOVER RESTRAINT OR ANCHOR STAND TO WALL.

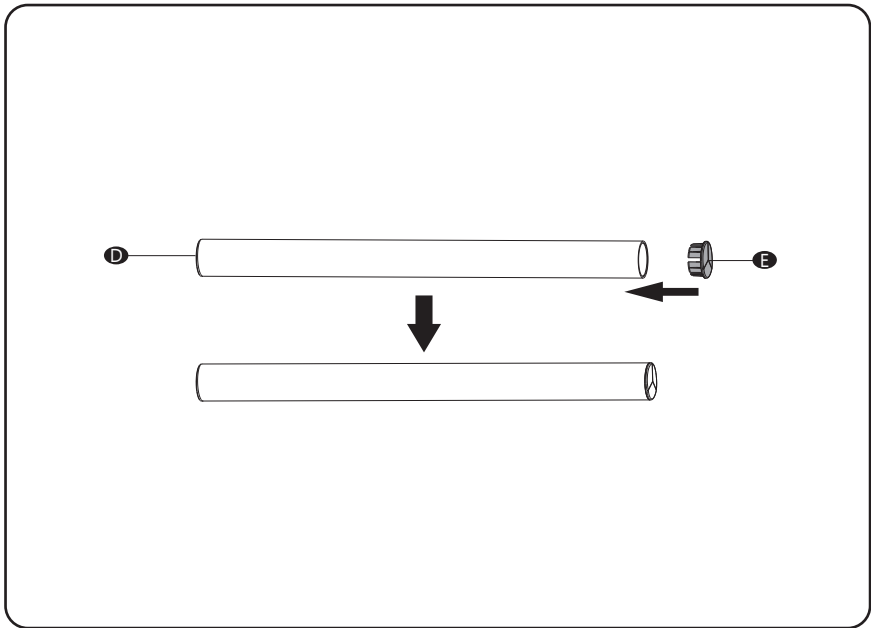
USE OF TIPOVER RESTRAINTS MAY ONLY REDUCE, BUT NOT ELIMINATE RISK OF TIP OVER.

SMALL PARTS- NOT FOR CHILDREN UNDER 3 YEARS. ADULT SUPERVISION IS REQUIRED.

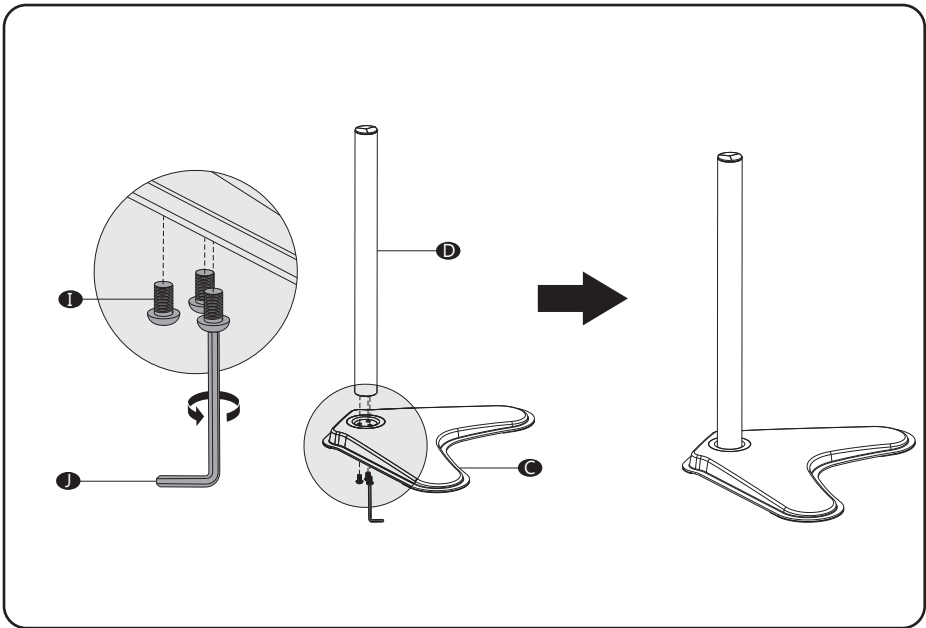
Supplied Parts List



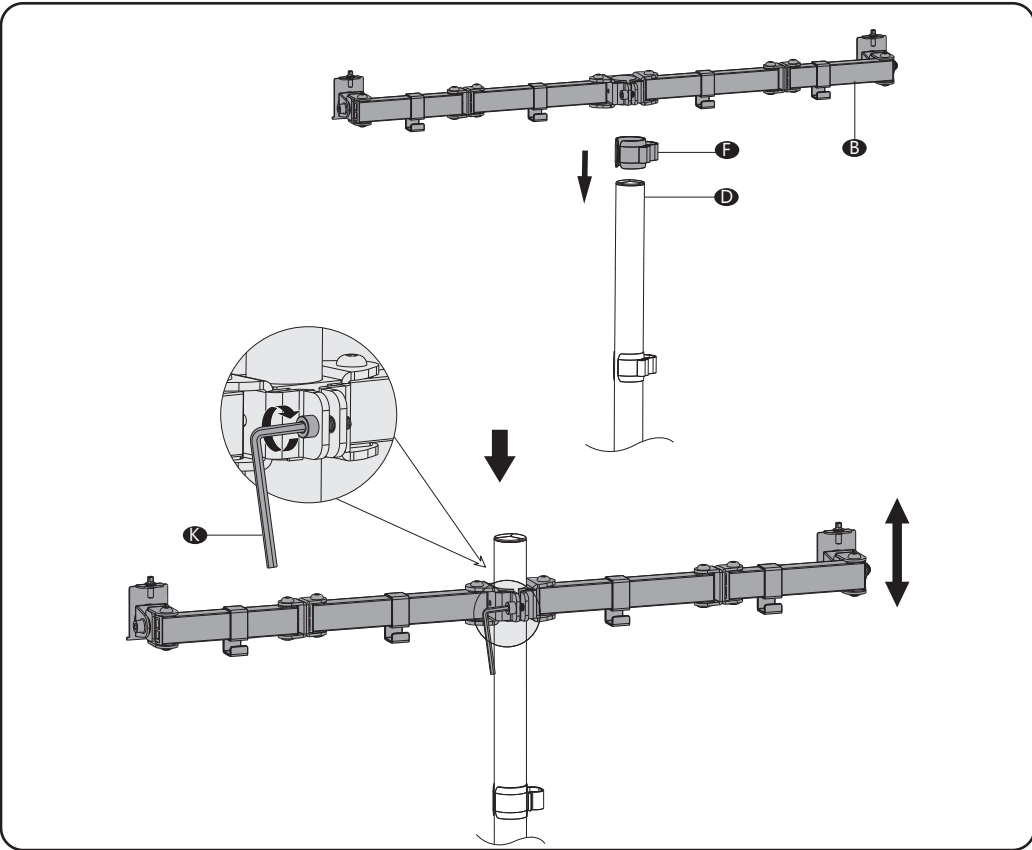
**1** Press Pole Cover **E** into the top of Pole **D**.



**2** Install the Pole **D** to the V-Shape Base **C** using M6x13 Bolts **I** and tighten with Allen Key 4 mm **J**.



**3** Put the Tool Holder **F** and Arm **B** through the Pole **D**, adjust the preferred height and tighten using Allen Key 6mm **K**.

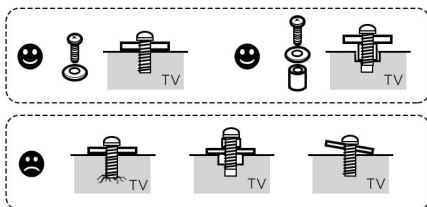
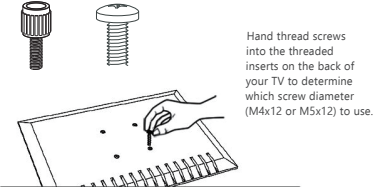


4

## Step 4.1 Select TV Screws

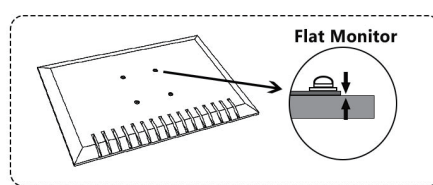
Only one screw size fits your TV

M4x12 M5x12

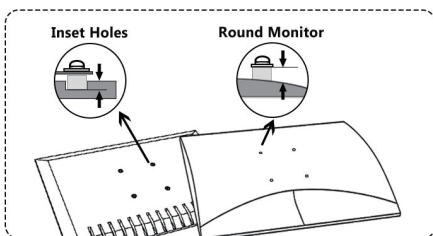


## Step 4.2 Select Spacers (if needed)

NOT NEEDED

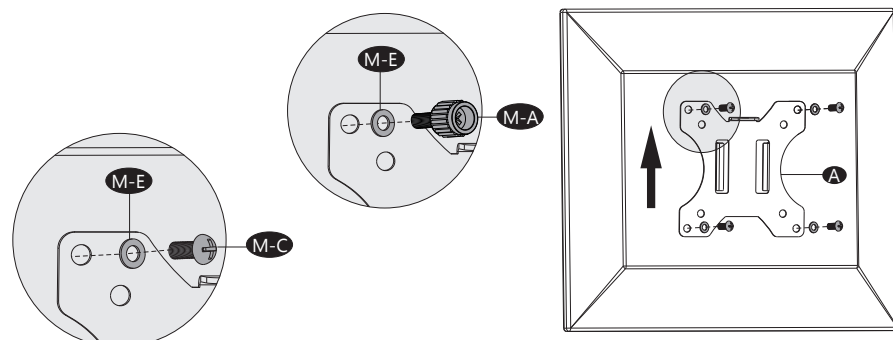


NEEDED FOR



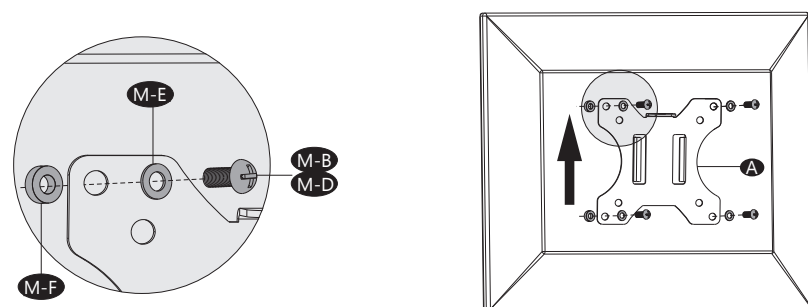
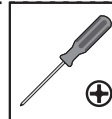
## Step 4.3a Flat Back Monitor

Select M4x12 Bolt (M-A) or M5x12 Bolt (M-C) according to your TV/Monitor, connect VESA Plate (A) together with D5 Washer (M-E) into the mounting holes on the back of TV/Monitor, tighten with a screwdriver. (Screwdriver not included)



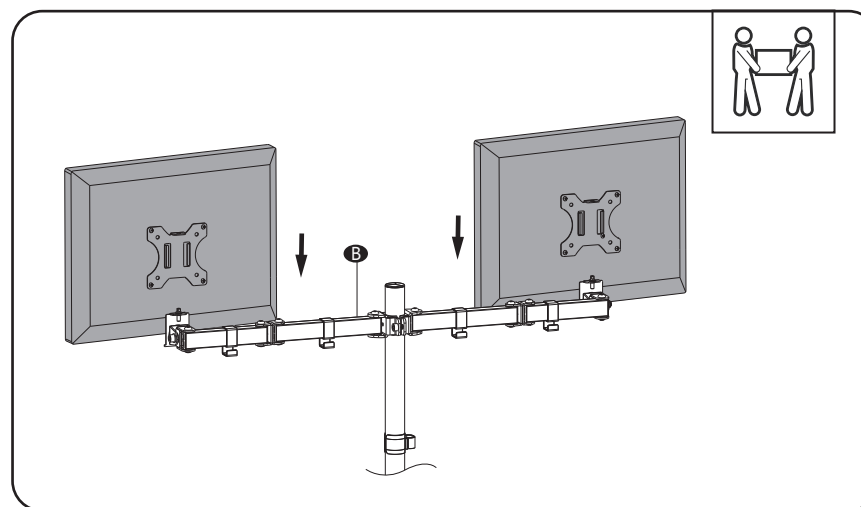
## Step 4.3b Curved Back Monitor

Select M4x16 Bolt (M-B) or M5x16 Bolt (M-D) according to your TV/Monitor, connect VESA Plate (A) together with D5 Washer (M-E) and Spacer (M-F) into the mounting holes on the back of TV/Monitor, tighten with a screwdriver. (Screwdriver not included)



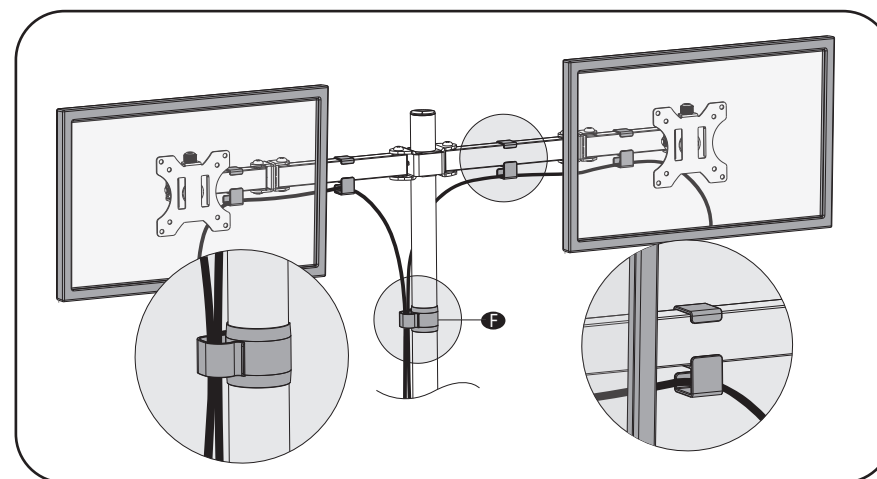
5

Put the assembled TV/Monitor onto the Arm (B) and ensure stability.



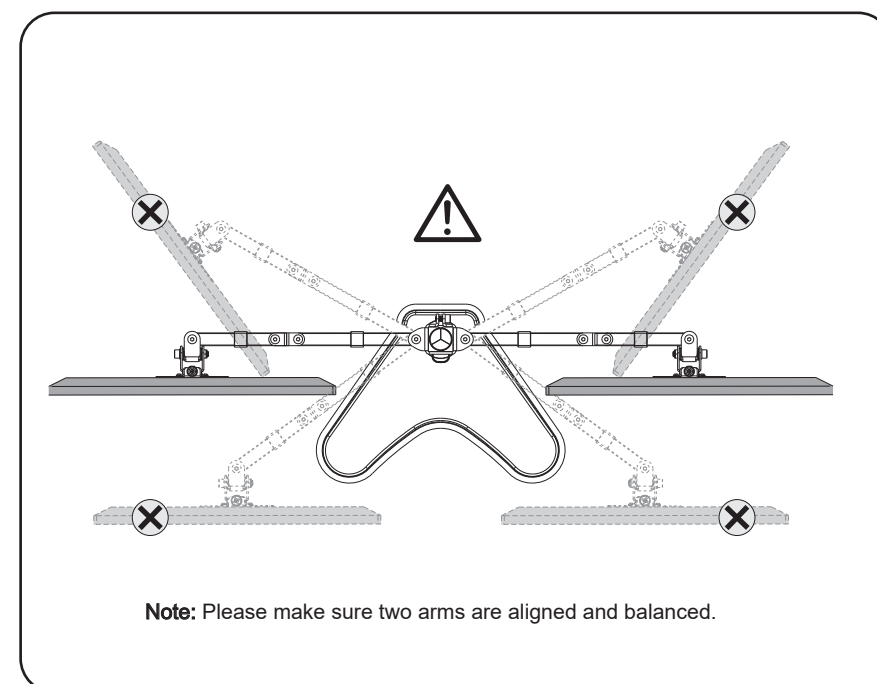
7

Guide the cable through the Tool Holder (F) and wire clips.



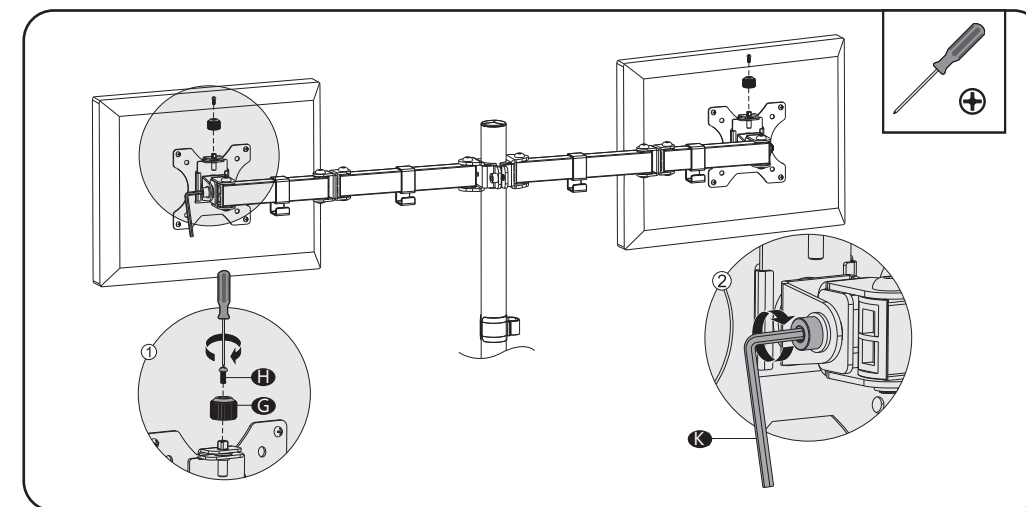
9

For safety, please do not extend the arms too far forward or backward. This may cause instability and tip over.



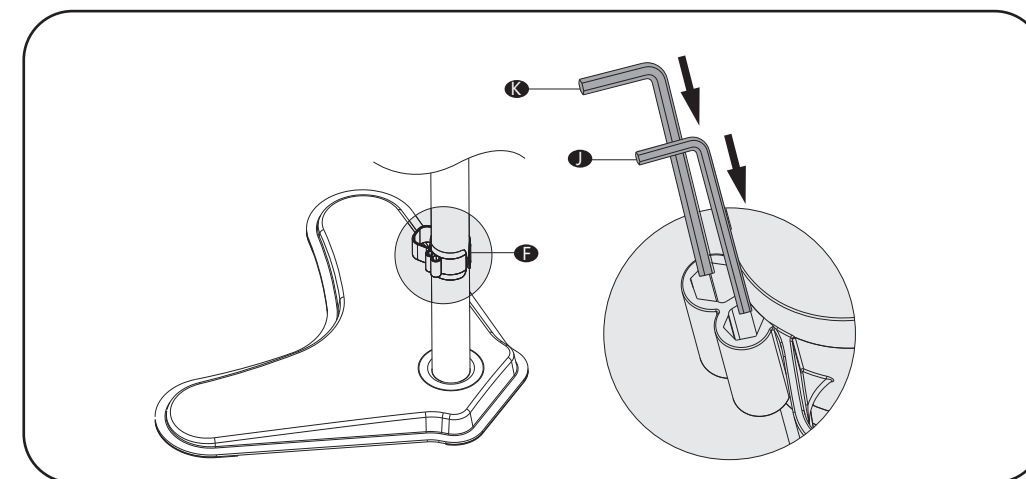
6

Tighten the VESA plate using Nut (G) and M3x7 Bolt (H) with a screwdriver. (Screwdriver not included) Adjust the tilt angle using Allen Key 6mm (K).



8

Store the Allen Keys in the Tool Holder (F).



10

Manually swivel, tilt, and rotate the monitor for the best viewing angle. Adjust the height of VESA Plate (A) using Allen Key 6mm (K).

