

SilverCloud[®] User Guide

GPS Asset Tracking System



GLOBAL HEADQUARTERS:

2040 Dillard Court
Woodstock, IL 60098

Technical Support: +1.888.467.5352

Email: support@landairsea.com

Activation / Website: www.LandAirSea.com

Support Videos: www.LandAirSea.com/videos

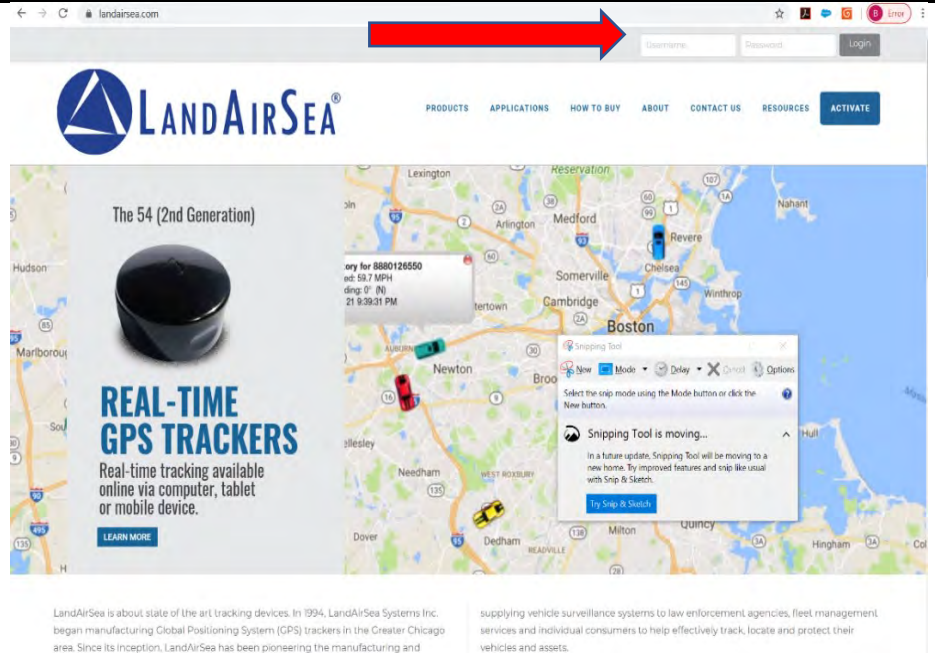
TABLE OF CONTENTS

1. LOG IN AT www.LandAirSea.com	3
2. TECHNICAL SUPPORT INFORMATION & PHONE NUMBER.....	3
3. HOW TO GET INFORMATION ON A SPECIFIC DEVICE.....	4
4. STEP-BY-STEP INSTRUCTIONS.....	5
a. MAP CONTROL DASHBOARD.....	6
b. HISTORICAL PLAYBACK.....	6
c. REPORT CENTER.....	7
1. Current Status Report.....	7
2. Activity Summary Report.....	7
3. Excessive Speed Report	7
4. History by Device Report.....	8
5. Stops and Mileage Report.....	8
6. Mileage by State Report.....	8
7. Alarms by Device Report.....	8
8. Devices by Geofence Report.....	8
d. DEVICE EDITOR (Change Tracking Device Name, Icon or Color).....	8
e. GROUP EDITOR.....	9
f. SHARESLOT®	10
1. Sharing a ShareSpot®	11
g. SILVERCLOUD® ALERTS.....	12
1. Geofence Alerts.....	12
2. Speed / Battery Alerts.....	13
3. OBD Alerts.....	13
h. ROUTES & PLACES.....	14
1. Favorite Places.....	14
2. Routing & Directions.....	14
i. ADVANCED OPTIONS.....	15
1. Map Overlays (KML FILES).....	16
2. Program Settings.....	16
3. Account Management.....	16
j. SILVERCLOUD® APP (on Google Play & iTunes).....	16
k. GEOLOCATION (How does GPS Work?).....	16
l. HOW TO CREATE A <u>KML FILE</u> USING GOOGLE EARTH.....	17
1. How to Upload a .KML File into the SILVERCLOUD® Software.....	18

DIRECTIONS FOR NEXT RIDE – LandAirSea®

Log In at:

www.LandAirSea.com



Enter User Name:

Note, this is the user name you created when you activated the units

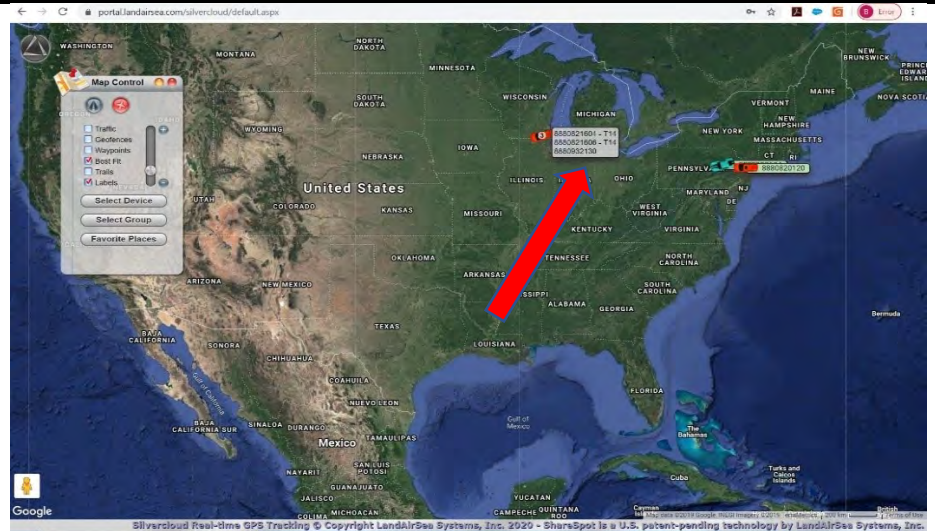
Enter Password:

Note, this is the password name you created when you activated the units

Having problems logging in to see your LandAirSea® asset trackers? Contact our 24 / 7 Live Technical Support to assist you with the log in.

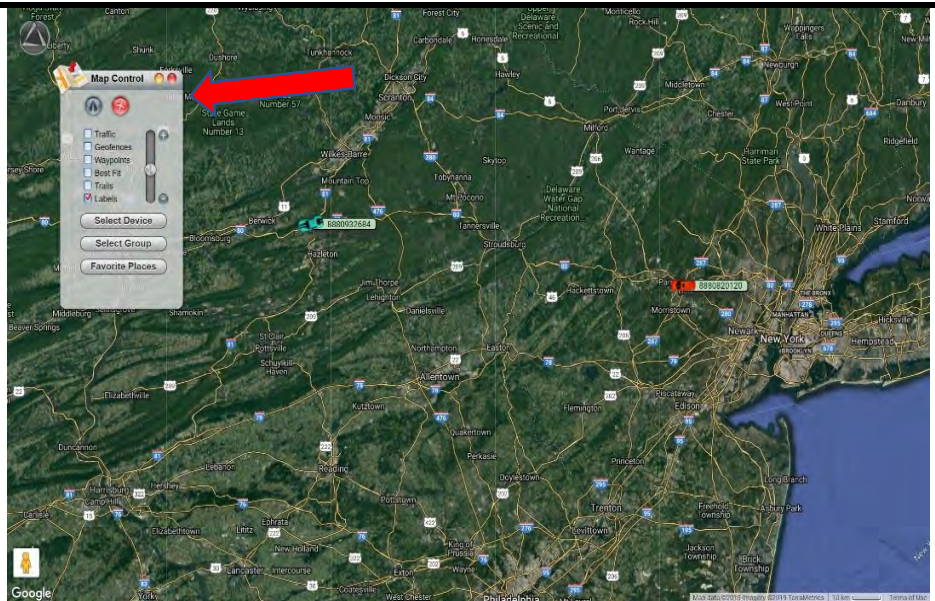
Technical Support: +1.888.467.5352
 Email: support@landairsea.com
 Support Videos: www.LandAirSea.com/videos

Once logged in, you will see where all your units last reported. Unique icons will appear and the name given to each LandAirSea® device will also appear. If there is a 10 digit serial #, this is the default setting (which you can change now that you are logged in – see Page 8 under the Device Editor section).



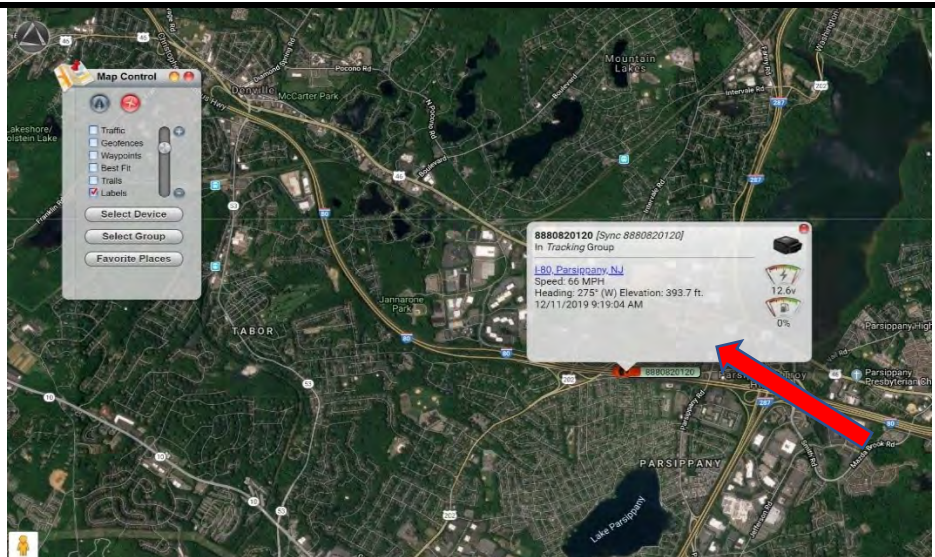
You will also see the Map Control box on the screen where you can turn on/off the following:

- Traffic (color coded based on congestion)
- Geofences – created by you to help with notifications of units entering/exiting
- Waypoints – created by you to identify unique locations
- Best Fit – used to show all units on screen (if checked you can't zoom into specific vehicles)
- Trails – the last 500 data points collected of each asset
- Labels – the labels of each LandAirSea® device
- Select Device – show which trackers on the screen
- Select Group – determine the group on the screen
- Favorite Places – locations you identified as favorites

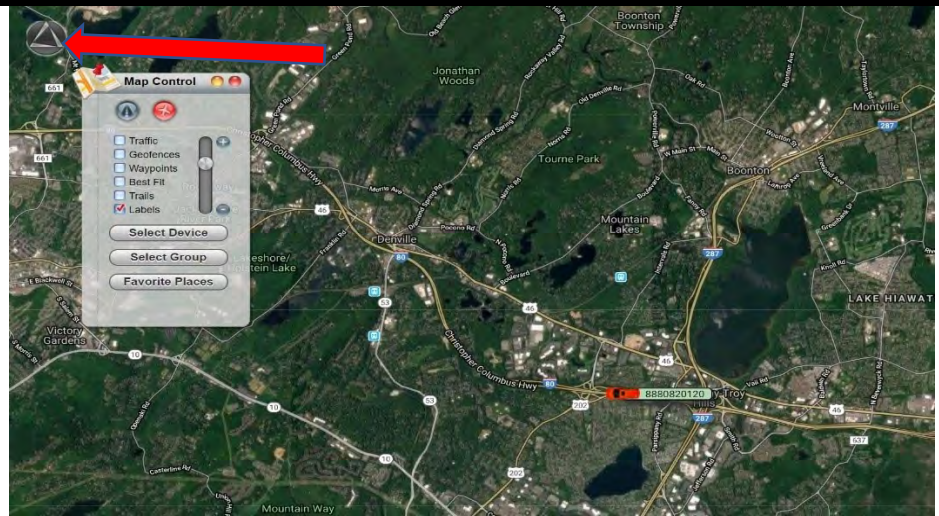


To get information on a specific device, click on that device and you will see the relevant information pop up:

- Unit Name
- Location
- Speed
- Direction Headed
- Date & Time
- Is the unit wired (plugged in) or on charge

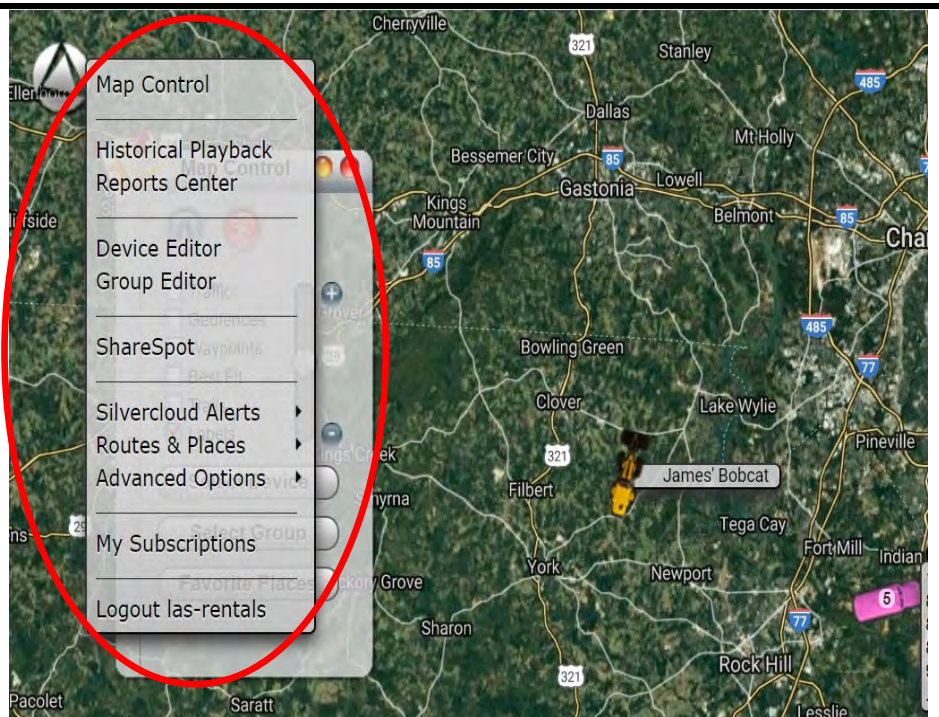


To make edits to the system, click on the LandAirSea® Logo in the top left corner of the screen.



After logo is clicked, you will see all the different features of the SilverCloud® Software:

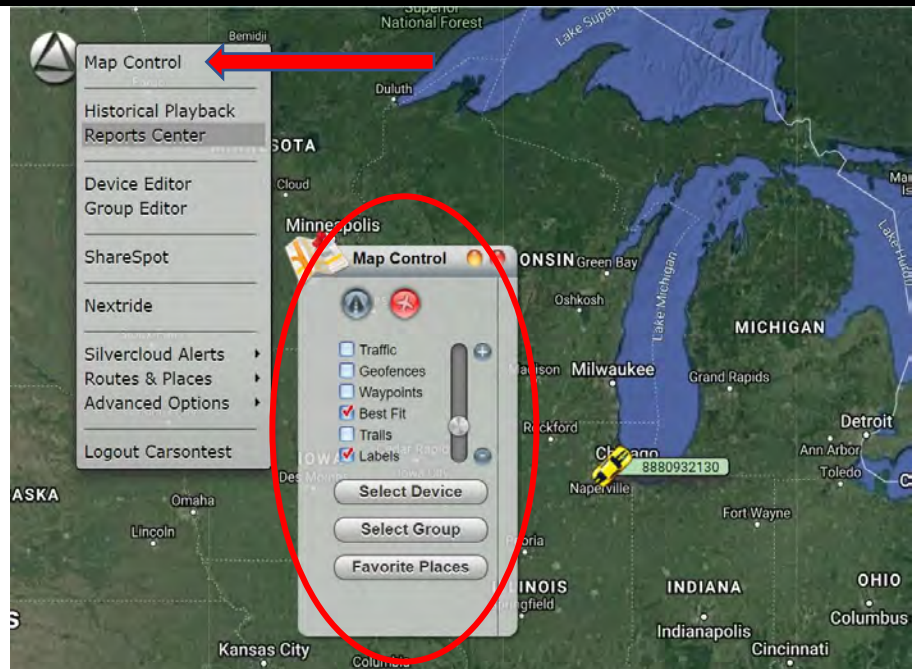
- Map Control – all relevant tracking options on screen
- Historical Playback – see where the tracker went, speed and duration
- Reports Center – generate / save 8 unique reports
- Device Editor – change the name of each tracker
- Group Editor – track certain assets in unique groups
- ShareSpot® - Share a URL or embedded HTML code on assets being tracked
- Silvercloud® Alerts – set up geofences & get SMS/email alerts on battery, speed and OBD
- Routes & Places – identify favorite places and get directions
- Advanced Options – change time zones & user management access and language preference (English or Spanish)



MAP CONTROL:

If for some reason the Map Control box disappears on your screen, click on the LandAirSea® Logo on the top left of the screen and click Map Control. Please note, Map Control is the default box on the screen after log in features include:

- Traffic
- Geofences
- Waypoints
- Best Fit
- Trails
- Labels
- Select Device
- Select Group
- Favorite Places



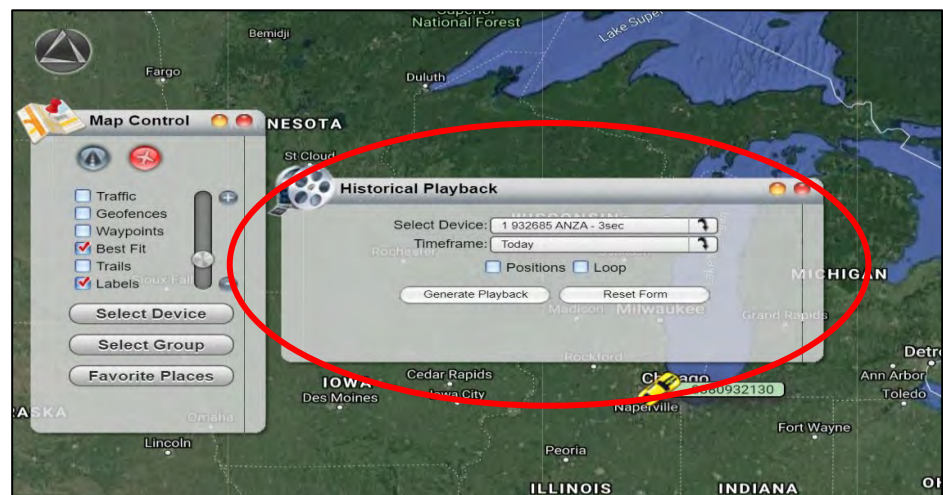
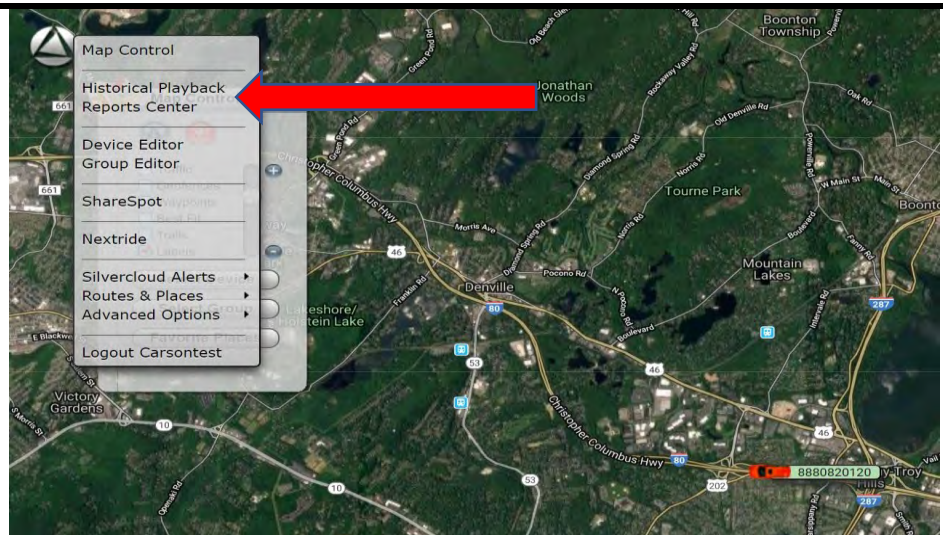
HISTORICAL PLAYBACK

Click on the LandAirSea® Logo, then move the cursor over the Historical Playback feature. Once complete, you will have the ability to use the Historical Playback feature with the pop-up box on the right and review the route/location of the GPS tracker, the time, speed, etc.

To view playback, select a vehicle from the drop-down menu, then choose the selected timeframe that you want to view.

Make sure to select Positions to view all tracking data points in the historical report. You can select Loop to view playback in a continuous loop.

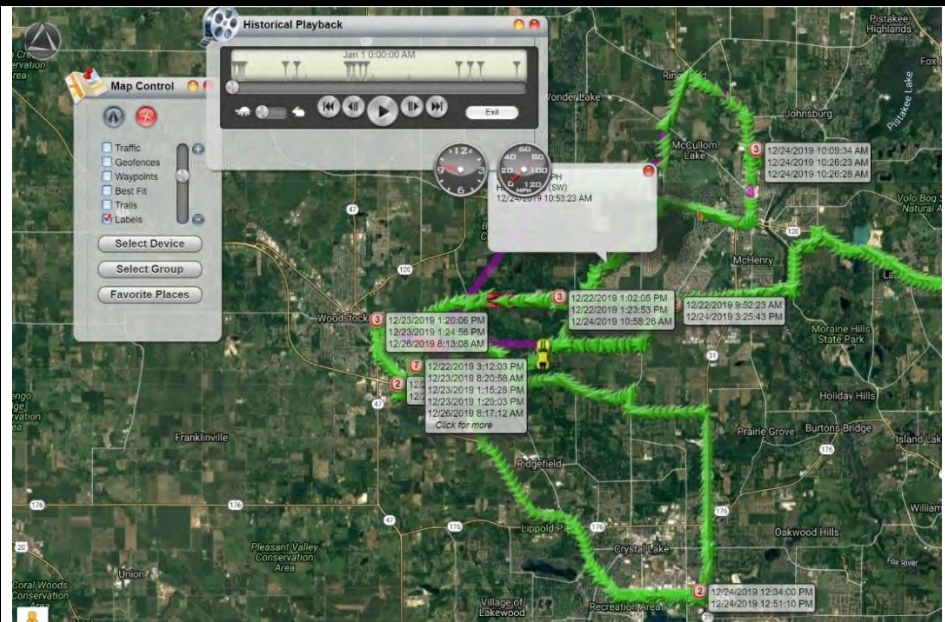
Once all fields above have been selected, press Generate Playback for the report.



HISTORICAL PLAYBACK (continued)

The Playback Control will display on the page along with an on-screen display of the path of the route traveled by the vehicle during the Start and End date time frame selected on the calendar.

The Toggle Button (turtle/hare) will adjust the speed of the playback.



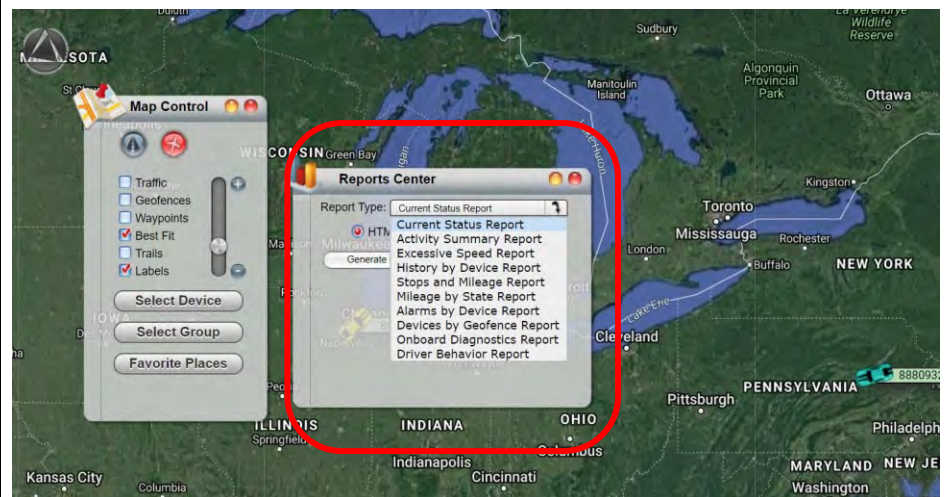
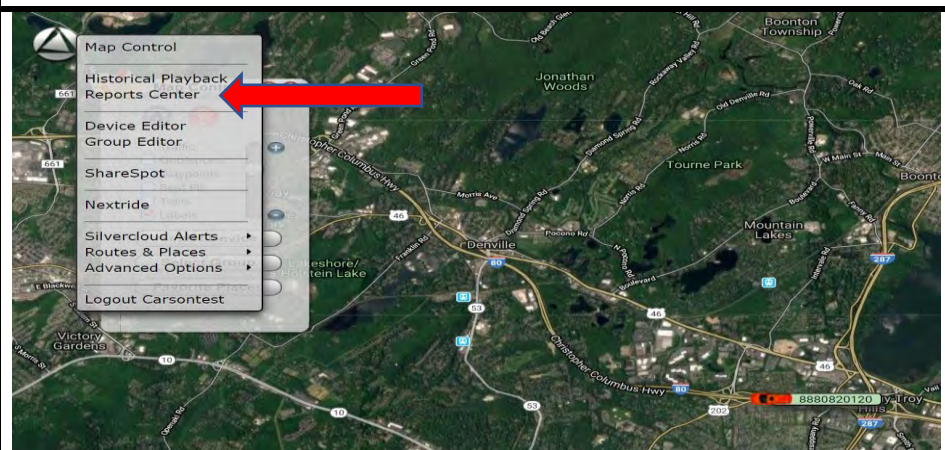
REPORTS CENTER

Click the LandAirSea® Logo and use it to create custom reports that can be viewed in a browser or Adobe PDF format. The reports can then be printed out for offline viewing or filing and/or accounting purposes.

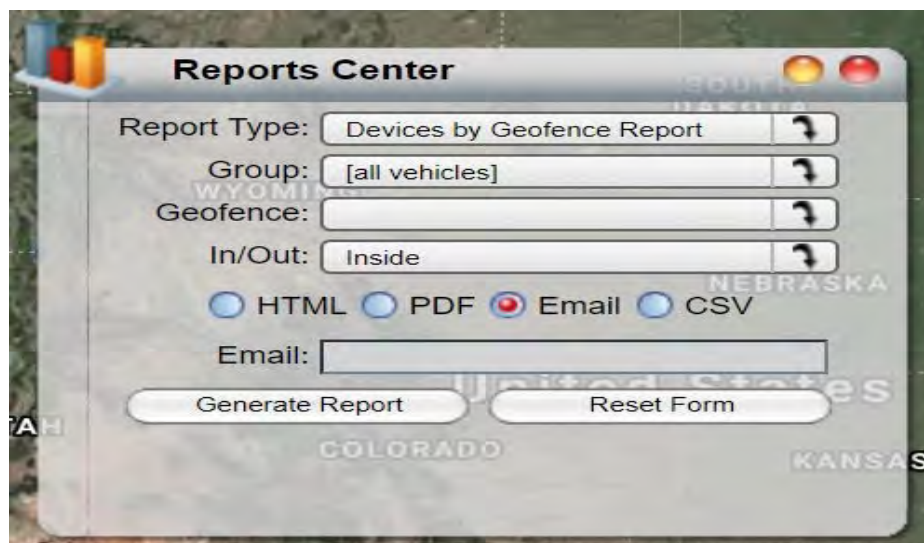
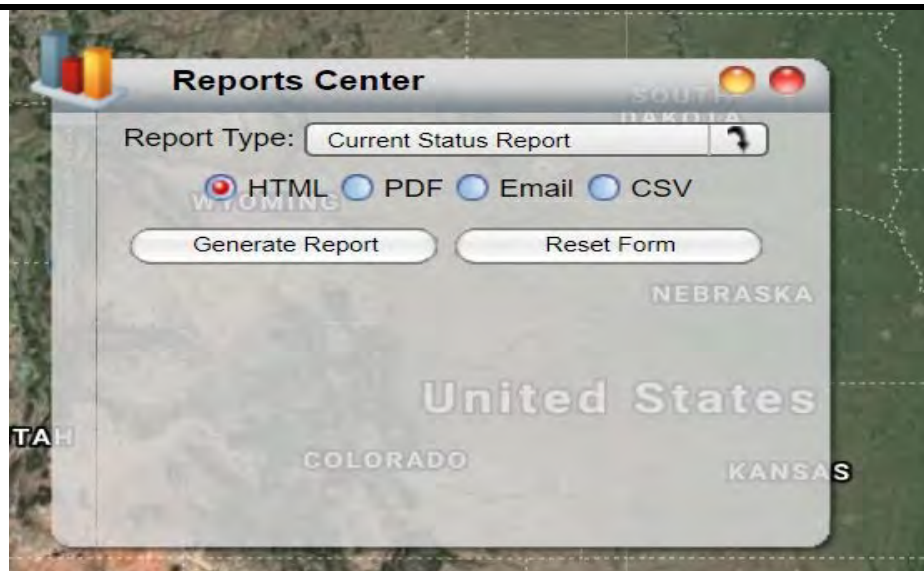
To generate a Report, Select Report Center from the Main Menu, which will then open a new window. Select the type of report you want and then click on HTML, PDF, Email or CSV button. Once complete, click on Generate Report.

Reports Center has the following reports available for our valued customers:

- Current Status Report – including battery life, speed, last data points
- Activity Summary Report – view of daily mileage, travel time and stops made
- Excessive Speed Report – displayed once maximum speed for vehicle is created



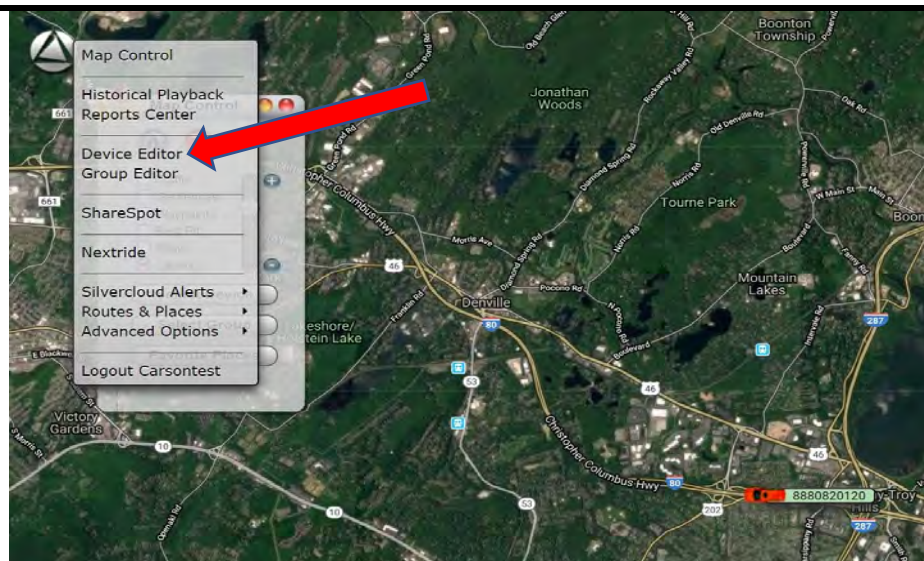
- History by Device Report – a spreadsheet of time and speed positions for all data recorded. Reports can be saved as a KML file to be used with Map Overlay Feature
- Stops and Mileage Report – date, time stop description, distance & location columns
- Mileage by State Report- date / time, description, runtime, and state location
- Alarm by Device Report – once alerts are set up, a report on the number of alerts
- Devices by Geofences Report – once geofences are set up, a report on alarms (in/out)



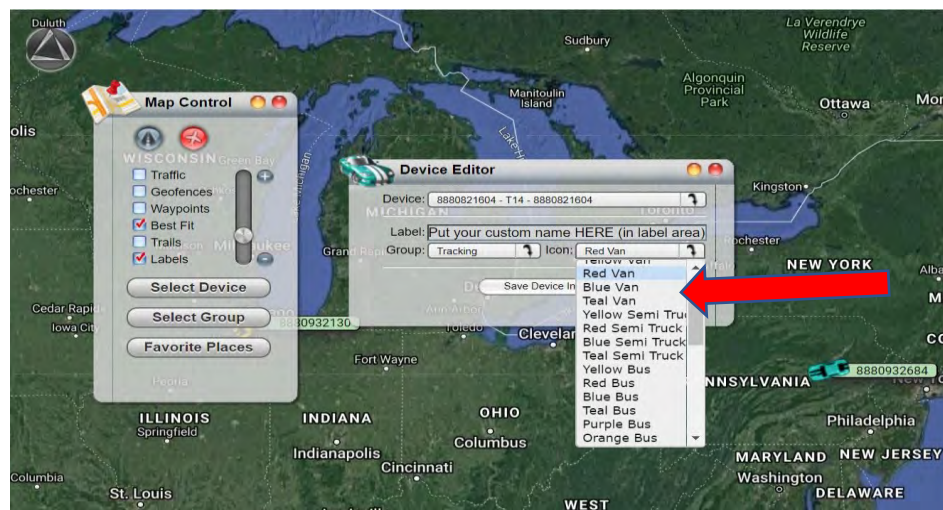
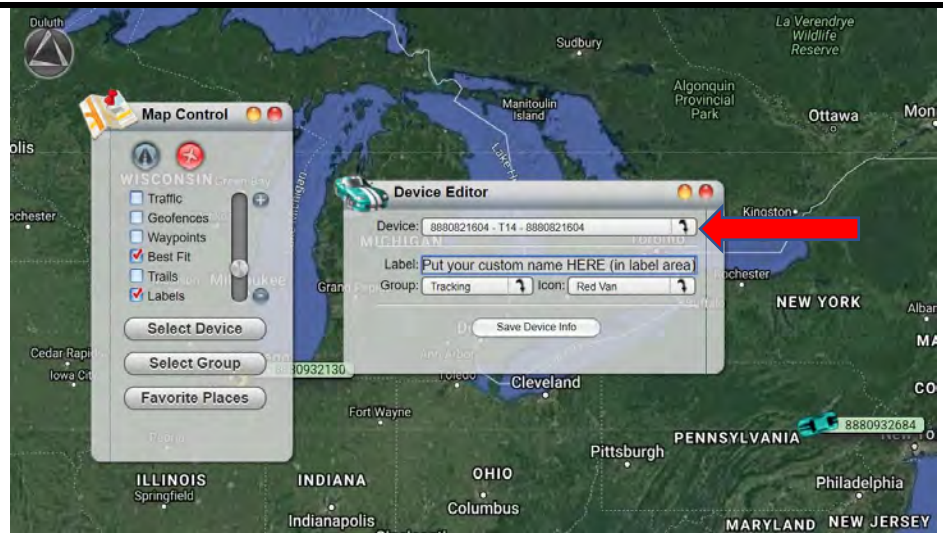
DEVICE EDITOR (how to change the GPS tracking name on screen to a customized name)

Click on the LandAirSea® Logo on the top left and then click on Device Editor.

In Device Editor click on the drop-down box and you will see all the units that are on your account. You can also change the Type of ICON on each vehicle by clicking the ICON drop-down symbol and choosing what type of ICON you want.



In Device Editor you can also customize the name of the vehicle you are monitoring by putting this in the Label Section.

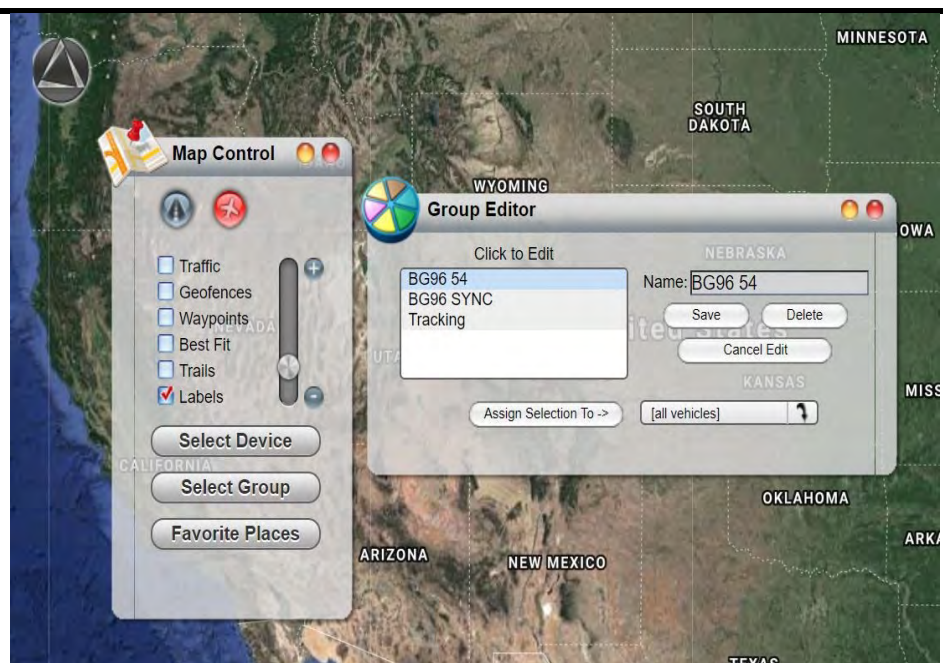


GROUP EDITOR

Creating a Group can be very useful when needing to view multiple vehicles, but not necessarily all vehicles.

To create a new group, click on the LandAirSea® logo on the top left of your screen and then select Group Editor. To create a new group, type the name of the group in the Name field.

Then choose the vehicle which you would like assigned to the new group from the [all vehicles] dropdown menu. Choose Save and a new group will be created with the vehicle within that group.



ShareSpot®

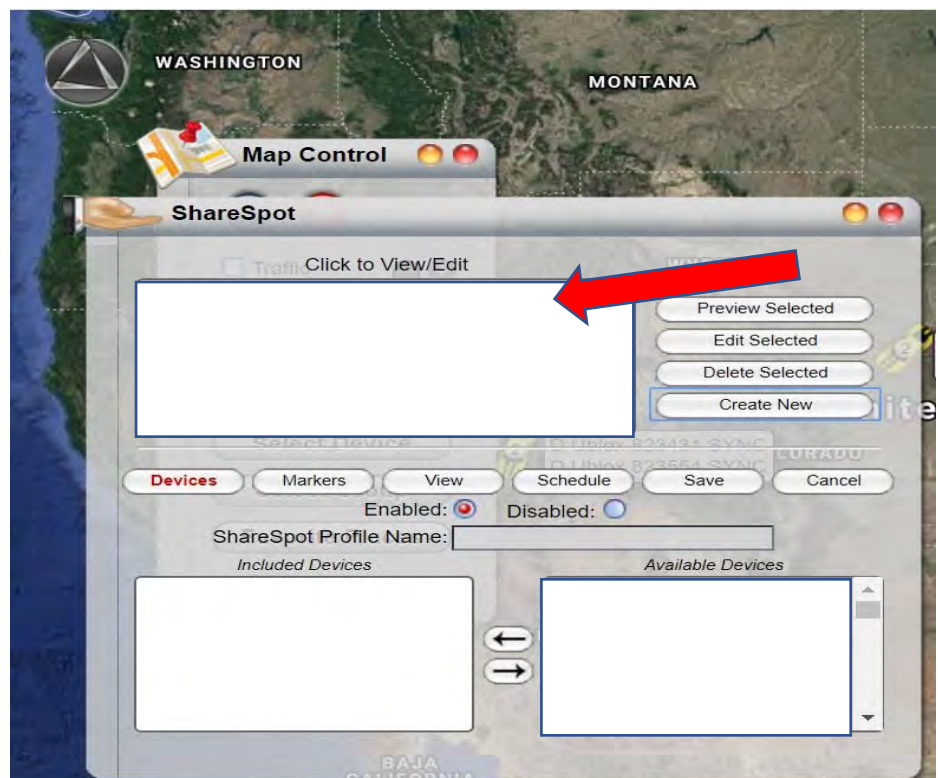
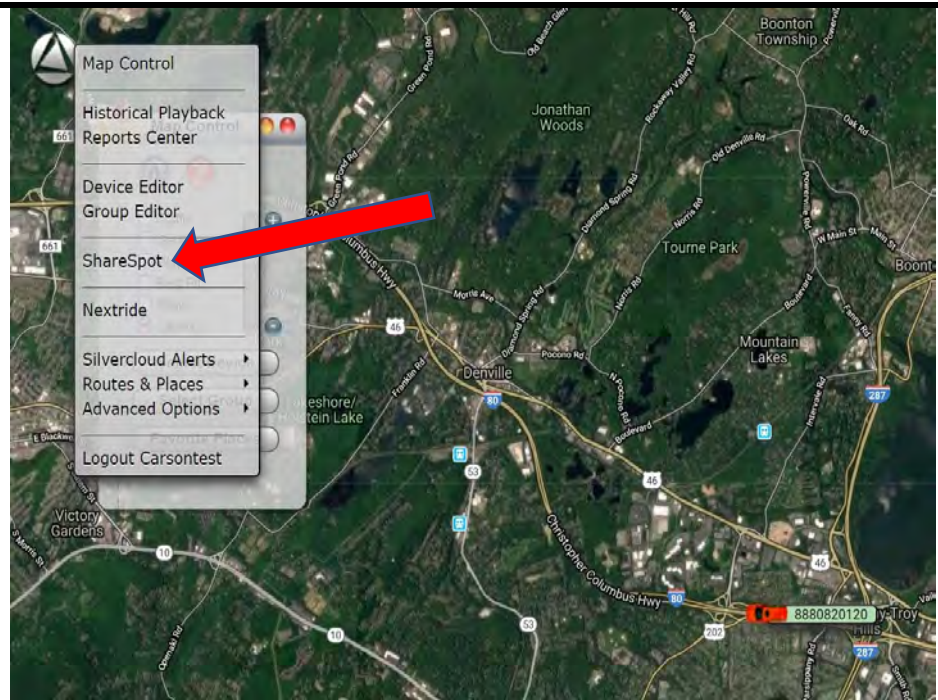
Click on the LandAirSea® Logo at the top left of the screen and then click on ShareSpot®.

When creating a new ShareSpot®, you will click on the **CREATE NEW** and follow prompts. Make sure to create the name of the specific ShareSpot® you want.....Type in the name where it says "ShareSpot® Profile Name:" Include things like group viewing, # of vehicles, Codes, etc., and be very specific.

To Edit existing ShareSpot®, click on the View/Edit box, highlight the ShareSpot® you want to edit and then click on Edit Selected.

When adding Available Devices to your ShareSpot®, make sure to move vehicles from the right column to the left column by highlighting the device you want and then clicking on the LEFT arrow. The device you selected should appear in the Included Devices box. To remove devices from the Included Devices, highlight the device and press the Right Arrow in the middle of the 2 boxes.

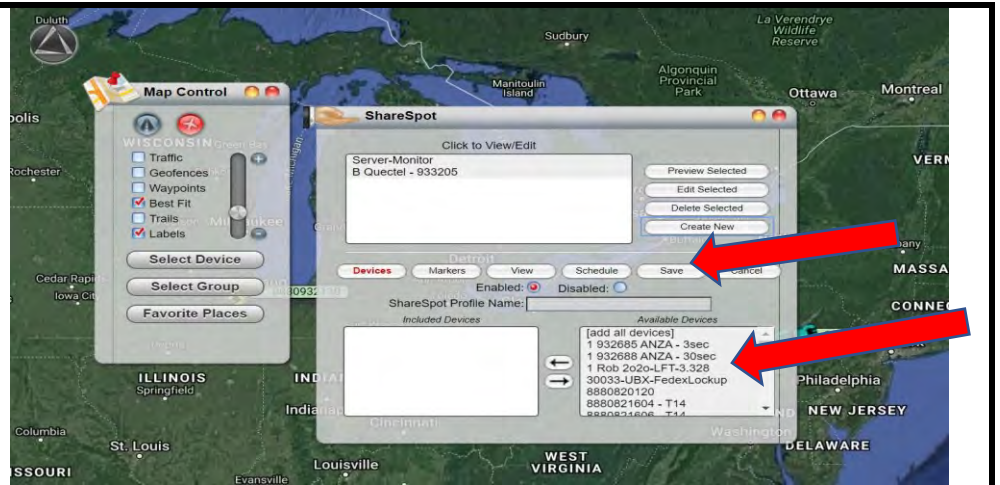
Once you have saved the ShareSpot® Profile Name and moved the units over, click on the VIEW button and you can determine the type of Default View you want as well as the Map Type (Aerial or Roads). Click on the Show Traffic



by Default if you want to show traffic all the time.

If you only want to Schedule the ShareSpot® for certain times of the day, you can make this edit by clicking on the Schedule button and changing the start and end times.

Always press SAVE after creating / editing ShareSpot®.

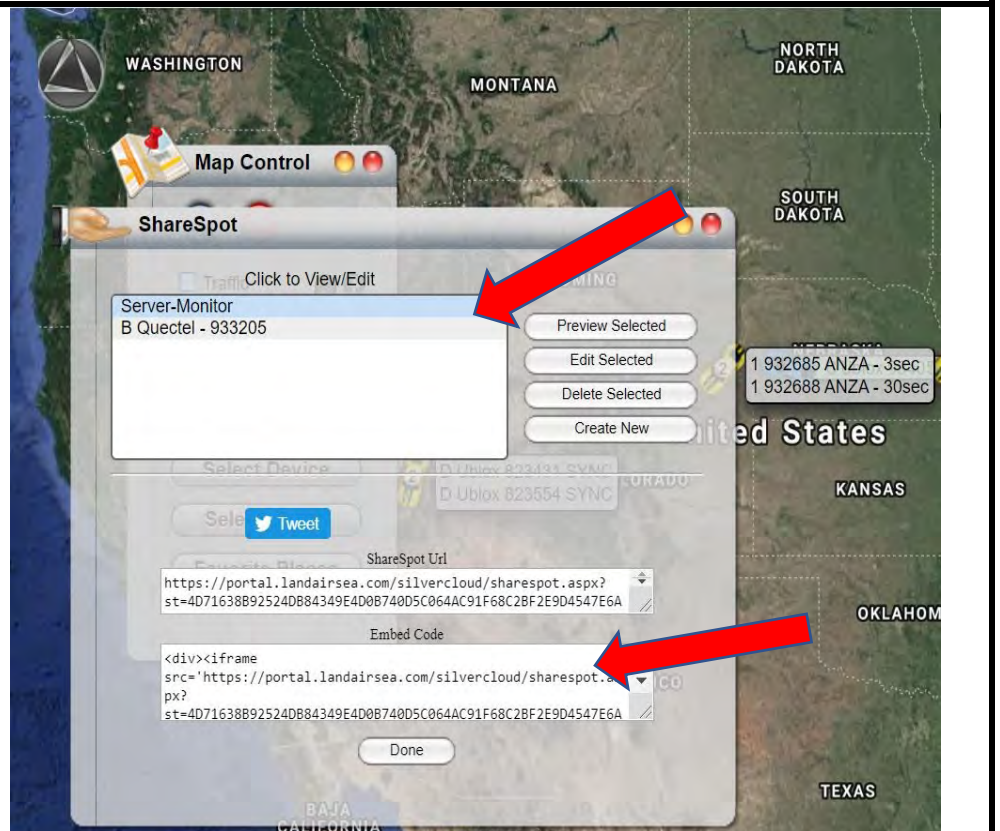


SHARING A SHARESPOT®

Once you have created a ShareSpot® or edited an existing ShareSpot®, make sure you click on and highlight the ShareSpot® you want to provide the unique URL for. Below the Tweet button, you will see a ShareSpot® URL that you can highlight and then share with others. When copying the ShareSpot® URL, make sure you copy the full URL as most times it is more than 2 lines as seen on the screen here.

You can also copy the HTML code onto your website, blog or Facebook page to create a tracking window on a business or personal site for shared viewing. Once embedded onto the website, the online mapping window automatically refreshes the GPS location based on the refresh rates.

Click Preview Selected and this will open your ShareSpot® in a new browser/window. Additional options are available here, including a QR code that can be scanned by Smartphone.



GEOFENCES & ALERTS

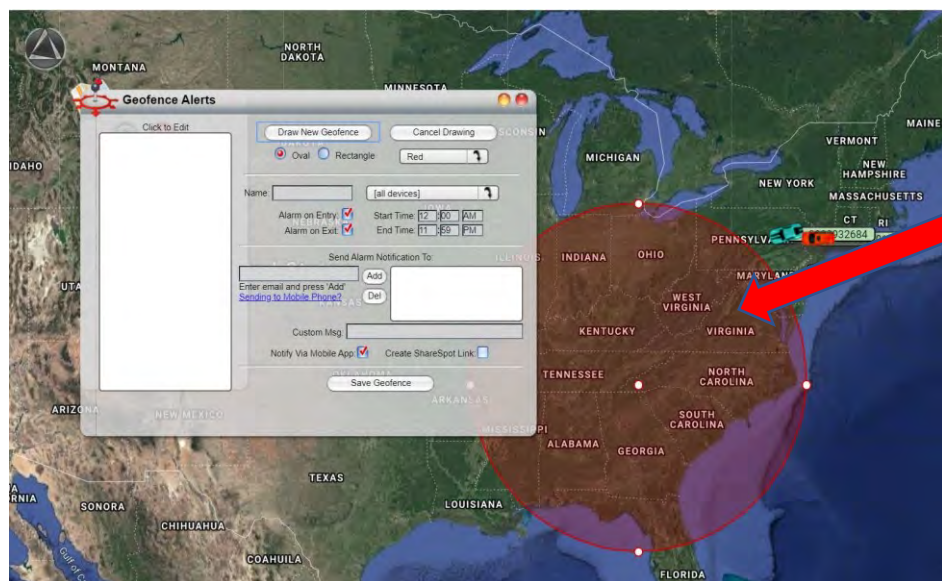
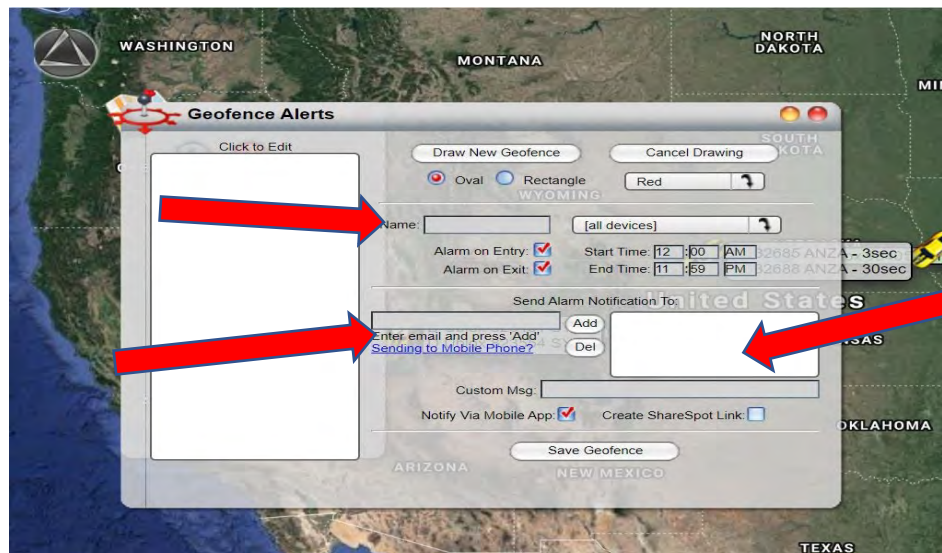
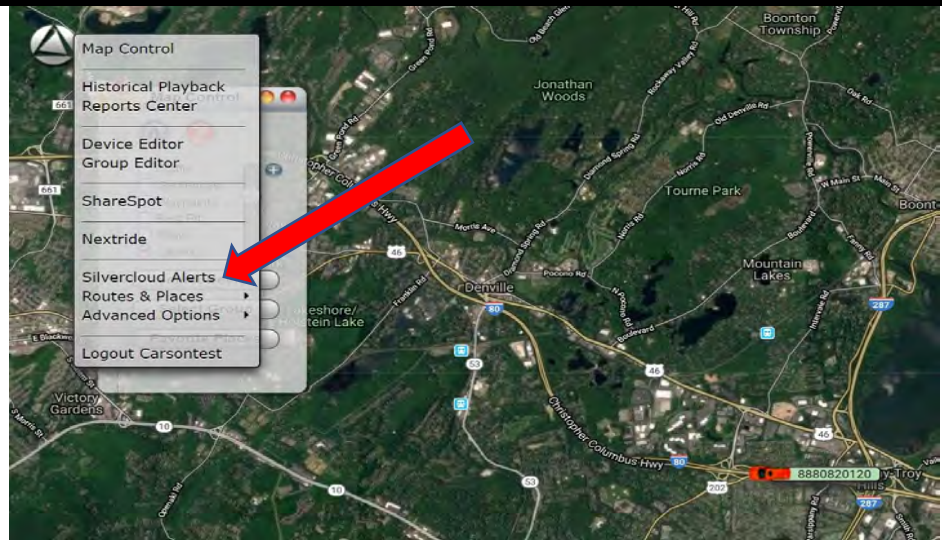
A geofence is a virtual boundary, or zone, created around a physical geographical space. The LandAirSea® SilverCloud®'s online mapping interface has the geofence alert feature which allows the user to send email and/or text message (SMS) notifications whenever a vehicle either enters or exits a designated area.

To create a geofence and receive alerts: Click on the LandAirSea® Logo on the top left of the page and then click on SilverCloud® Alerts. If you select Geofence Alerts, you can create your own geofences and alerts who receive them when units enter or exit a certain location.

Just like the ShareSpot® feature, you will want to create a name for your Geofence Alerts and this can be entered in the section called NAME:

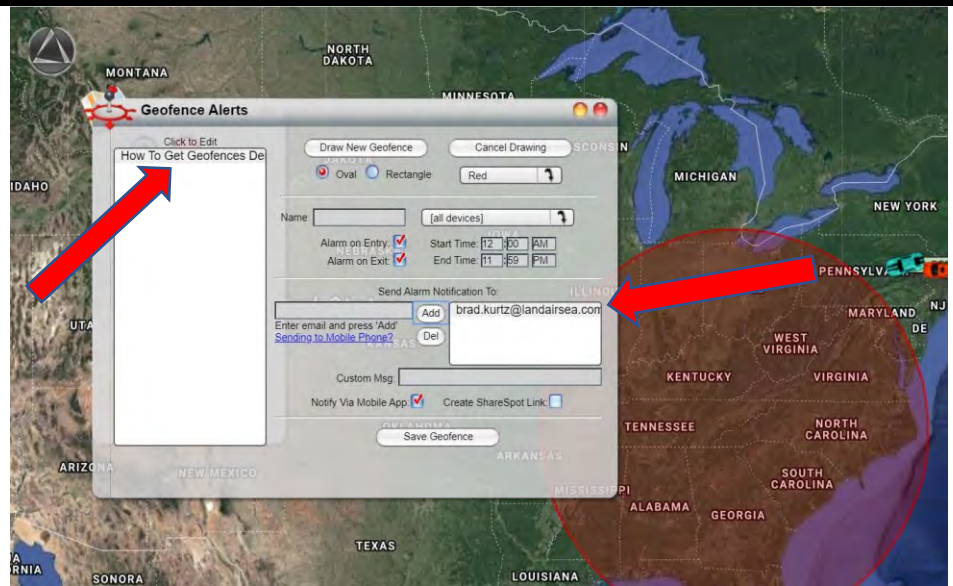
When assigning emails or phone numbers to receive alerts, make sure you put in the correct email or phone number and then click the Add button so it moves into the white box on the right-hand side of the pop-up box.

To draw a geofence around a particular area, determine whether you want an oval or a rectangle and then click on Draw New Geofence. A red oval or rectangle will appear on the screen where you can move



it around, increase or decrease the size and change the color.

You can also get any of the SilverCloud® Alerts via Notification on your Mobile App by clicking the box “NOTIFY VIA MOBILE APP” on any Alert Setup Box.



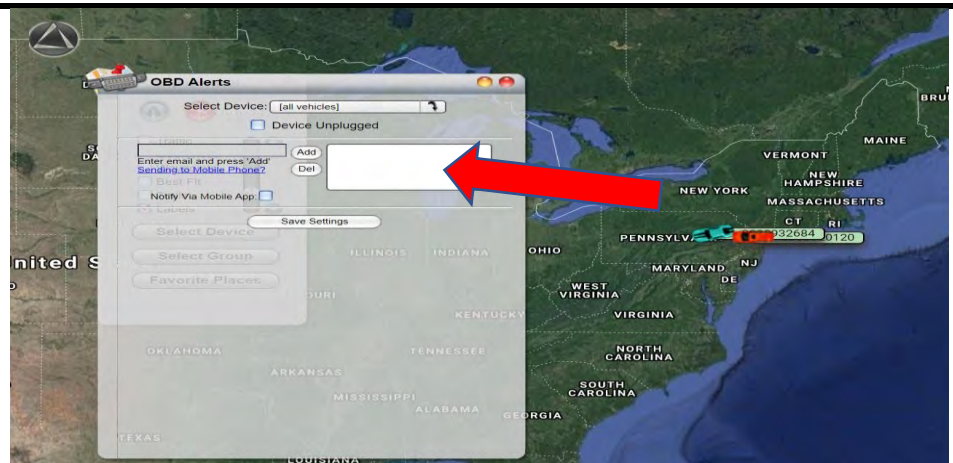
SPEED / BATTERY ALERTS

Speed & Battery Alerts can be set for specific devices by clicking on the LandAirSea® logo on the top left of the screen, going to SilverCloud® Alerts and then selecting Speed/Battery Alerts. If you want to set alarms for devices (vehicles) that exceed a certain MPH, make sure to click on the Alarm for Speed Over and enter a valid email or phone numbers and click Add. Now click Assign Alarms.



OBD ALERTS

OBD Alerts for OBD Devices that have been “Unplugged” can also be created by clicking on the LandAirSea® logo on the top left of the screen, going to SilverCloud® Alerts and then selecting OBD Alerts. Make sure to include a valid phone number or email address and then click Add. Once you have pressed Add, it should appear in the box on the right of the pop-up menu. Click SAVE.

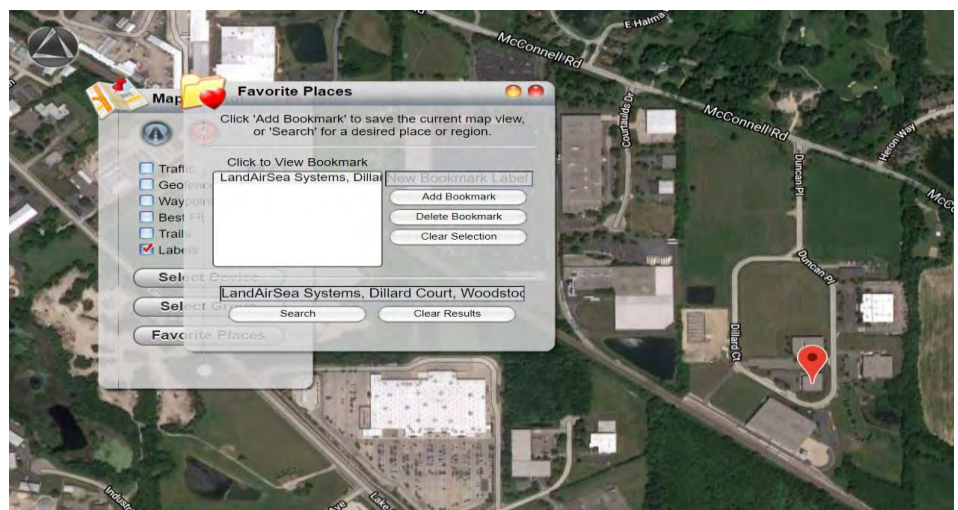


ROUTES & PLACES – FAVORITE PLACE

With the Routes & Places Utility, users will not only be able to identify their “Favorite Places” but will be able to create routing from a vehicle to an address, from an address to an address, or from a vehicle to a vehicle (multiple devices).

To generate your **FAVORITE PLACES**, click on the LandAirSea® logo on the top left, then select Routing & Places, then Favorite Places. Enter a Location and then press Search. Once you have found your favorite place, select Add Bookmark and a name for your bookmark and you will see the name in the Bookmark box.

To remove a Favorite Place, click Clear Selection and also click on Clear Results to remove it from the map.

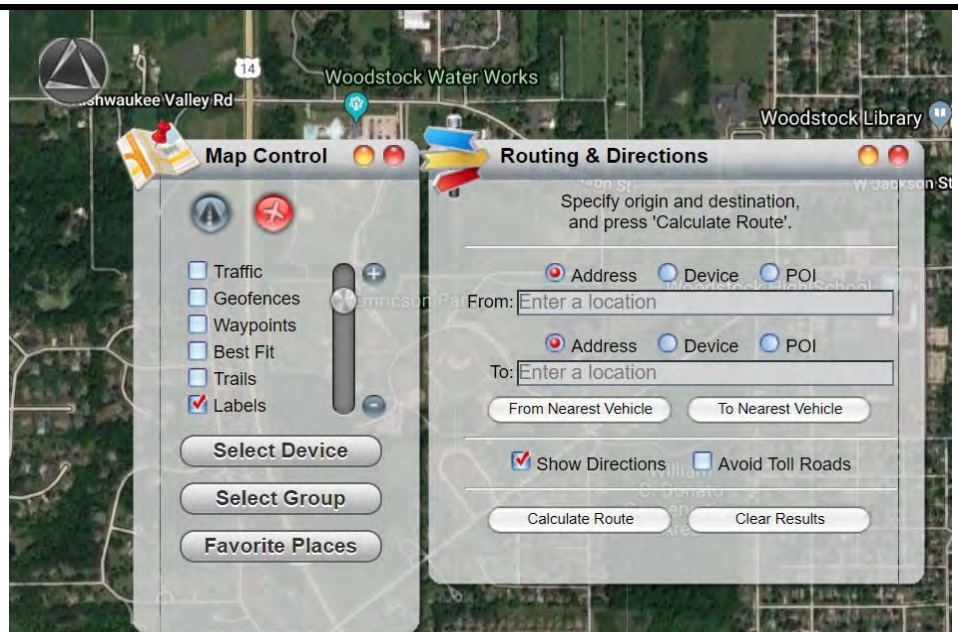


ROUTES & PLACES – ROUTING & DIRECTIONS

To generate your **ROUTES**, click on the LandAirSea® logo on the top left, then select Routing & Places, then **ROUTING & DIRECTIONS**.

You can get routing & directions three (3) different ways:

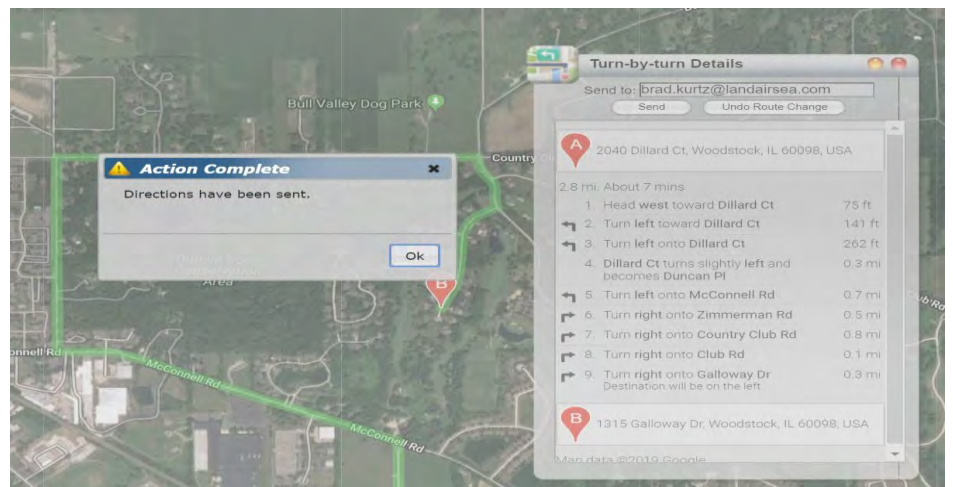
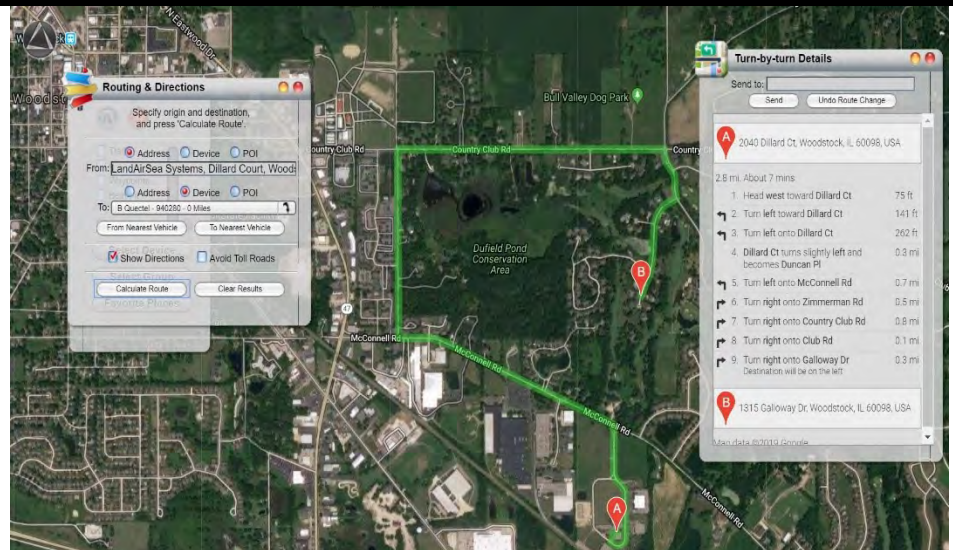
1. Device to/from an address
2. POI to/from an address
3. Address to/from address



Enter a location in the From or To boxes and then determine what type of routing & directions you would like it to be. Once complete, click on Calculate Route and you will not only see the route but the turn-by-turn directions on how to get to your specific destination.

Want to share the turn-by-turn details with a friend, colleague or fleet driver, enter a valid email address in the Send to: box and then press Send. The individual will receive an email with the directions both in the subject line as well as in the body of the email.

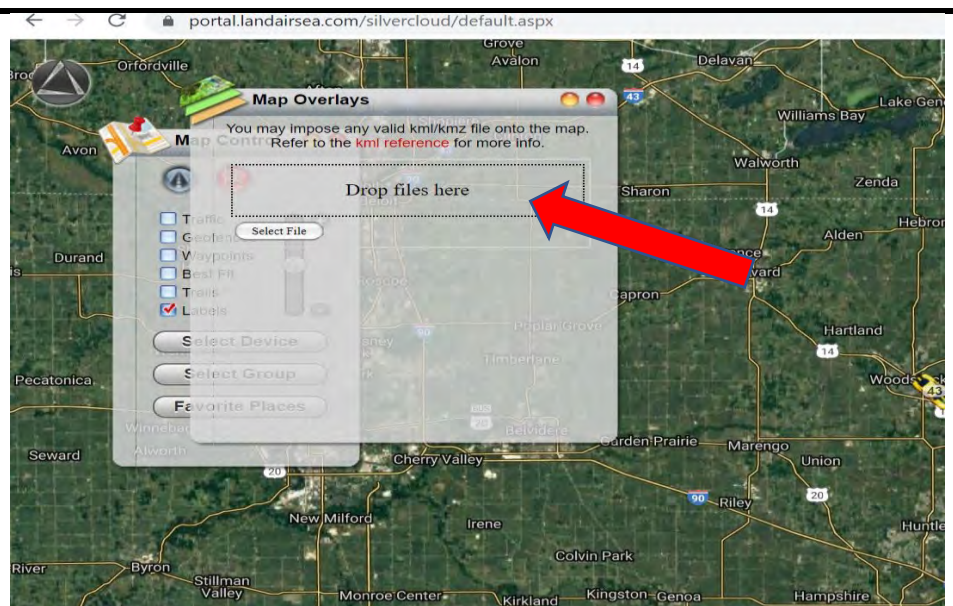
For Dispatchers & Operations Staff, the "From Nearest Vehicle to Nearest Vehicle" feature is a great way to determine who is the closest to a desired location, pick up point or meeting point.



ADVANCED OPTIONS – MAP OVERLAYS

To get to Map Overlays section, click on the LandAirSea® Logo on the top left part of the page and then scroll down to ADVANCED OPTIONS and then highlight MAP OVERLAYS.

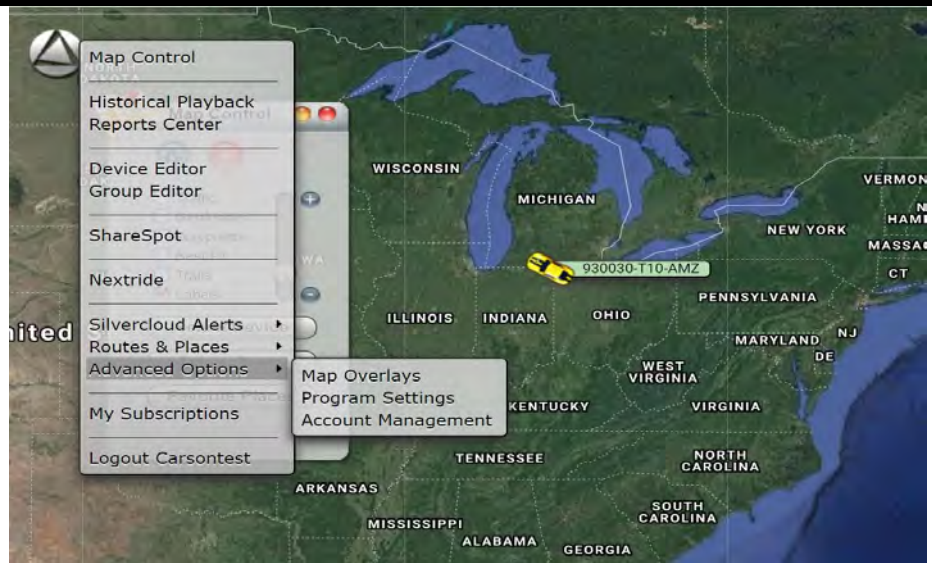
If you want to put your own KML Files on the maps, create them in Google Earth, save them with only 1-2 characters..... as an example: 12.kml would be file name and then insert them into the map overlay file. The more in 1 file name with smaller file size, the better.



ADVANCED OPTIONS PROGRAM SETTINGS

Our online interface allows you to have complete account control. To do so, click on the LandAirSea® logo at the top left, click on Advanced Options and then click on Program Settings. In this section, you can change email addresses and set desired timezones.

You also can determine whether you would like English or Spanish as the language displayed on the screen.

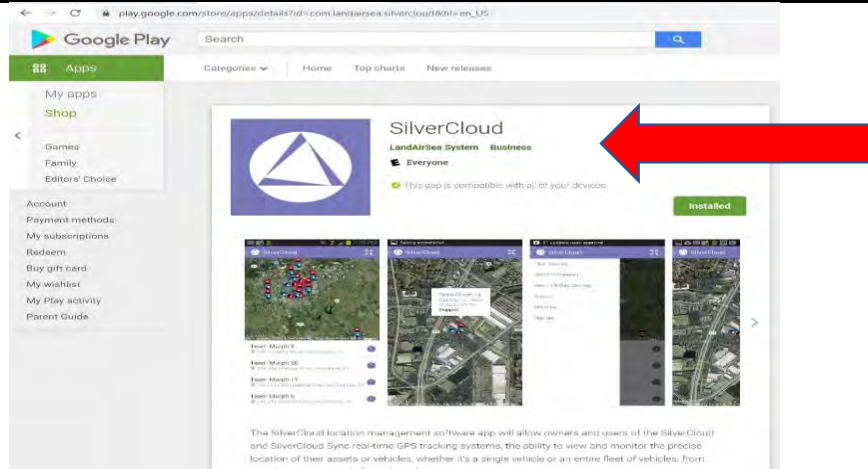


ADVANCED OPTIONS ACCOUNT MANAGEMENT

Some Administrators have access to this feature that includes the Account Details, Existing Users and the Create New Users Option. If you are not sure if you have access or are having difficulties accessing it, please contact Technical Support: +1.888.467.5352 or via email at: support@landairsea.com

SILVERCLOUD® APP

If you want to have your team on the ground see where units are without having to log in all the time, download the SilverCloud® App from either the Google Play or Apple Store.



GEOLOCATION

Addresses from any GPS device are derived from a process called Reverse Geocoding. The device tracks latitude and longitude geographic location and then derives an address based upon a database of addresses compiled by the government. The geographical coordinate is then mapped to the nearest known address. LandAirSea® accuracy claims are based on geographic location on the earth, meaning the universal latitude and longitude coordinates. Addresses are derived from a U.S. government database, based on census reports. The database is the best information available, but it is not perfect. The numbers can be off by a house or two, or the address might be an estimate, based on the data that is available.

HOW TO CREATE A .KML FILE USING GOOGLE EARTH

Step-by-Step on how to create .kml Files that can be used with LandAirSea's® SilverCloud® Software:

1. Open Google Earth (Install it if you do not have it on your desktop or laptop).
2. On the left-hand side, you will see a section that says 'Places'.
3. Click once on 'My Places' so it is highlighted.
4. Right click on 'My Places', highlight 'Add', then select 'Folder'. A box will come up asking you to name the folder. This is the folder where you will add all routes and Points of Interest (POIs).
 - TIP: If building multiple routes, create 1 folder for the entire project (i.e. LASOverlay). Within that folder, create sub-folders for each route, or a set of POIs. Reason being, when you want to export routes to LandAirSea's® SilverCloud® Software, you want to be able to upload an entire route overlay & POIs together. This is purely for organization but also flexibility, in case you wanted to hide a route or set of POIs later, you could delete that routes folder/file. If you don't build sub-folders and instead put everything into one folder, when you make edits it's hard to hide routes when everything is within one file.
5. To plot POIs:
 - Enter an address of a location in the search bar at the top left of the screen to have Google Earth navigate to destination. Once Google Earth takes you to the location, click on the icon to plot the point for this destination. The POI will flash and a dialogue box will appear with various options, as well as ask you to name the POI - make sure you name the POI what you would want a User to see on the LandAirSea's® SilverCloud® Software screen.
 - When the POI is flashing, this means it can be moved. Move it to the location you want it to be (ie. Load Zone, Drop off, etc.).
 - Name the POI in the dialogue box that appeared.
 - To customize with a different icon, you will see the icon next to where you entered in the name in this dialogue box. Click on this button and you should see a long list of standard icons offered by Google Earth. You can also color code the icon by selecting the 'Style/Color' button beneath the latitude & longitude boxes. Try and match your POI colors to the route color for consistency.
 - After you've entered name, moved the icon, and/or customized the icon, click 'OK' in the bottom right hand corner to save it. After this, you will see this POI listed beneath the folder you created on the left in Google Earth.
 - TIP: Make sure, whenever you create something, you first highlight the folder you created on the left in Google Earth so after you save it, it will automatically be listed beneath that folder. If you somehow create an icon or route outside of this folder don't worry, you can easily just select that item on the left and drag it into the folder, much like you drag files in your desktop to folders.
6. To create a Route:
 - Make sure you highlight the route folder on the left you want to create the route for.
 - To start drawing routes, select the icon at the top to begin. A dialogue box will appear for you to name and customize the format of the route. Name the route first before you begin plotting points. After naming the route in the box, if you take your cursor outside of the box, you will see your mouse looks like a target - this means that you are ready to start plotting points and drawing the route.

- Format the route line weight and color by selecting 'Style/Color' below the name section. You can change the color and thickness of the line here - it's useful to do this first as it's sometimes to see the route in the default format when you first start plotting. This is also how you would color code whatever color you want to assign the route.
 - Start plotting points. Click on the map where you want to start the route. Keep clicking to draw out the entire route to the final destination. You will probably need to zoom in/out as you progress along the route & try and keep it overlaid on the road as tight as possible.
 - TIP: If you incorrectly plot a point or want to adjust a point, just click on it using the left mouse button to indicate to Google Earth this is the point you want to move (i.e. select the point first). Once selected, click it again and hold to drag it into the position you want it to.
 - To DELETE a point, put mouse over the point and right click - this will automatically delete the point. If you make any mistakes try to edit them right away as it can get complicated if you try and edit a point you made a long time ago, the lines start crossing each other a lot and it can get messy.
 - Once you've plotted your entire route, make sure you've named the route line and color coded it how you want - from here you can select the 'OK' button in the bottom right hand corner of the dialogue box that originally appeared when you started to plot the route.
 - After clicking OK, you should see it appear in the folder for the route. If it somehow ends up outside of that folder, again just select it and drag it into the correct folder you want.
7. Save to .KML - As mentioned, try and create all the POIs and route overlays into a specific routes/route folders. When done building out the route or all the routes and are ready to save, I recommend saving each route individually as a .KML as this gives you more flexibility when wanting to subtract/add routes.
- Click to highlight the route folder you want to save/export, then go up to 'File' and select 'Save', then 'Save Place As'. Save dialogue box will appear, save this file into a separate folder where you have you other files related to the project.
 - TIP – We recommend limiting the file name length that you save the file. Example, if you have 10 routes, i would save them as 0.kml, 1.kml, 2.kml etc. – The files with short names (1 or 2 characters) work best with LandAirSea's® SilverCloud® Software accounts.

HOW TO UPLOAD IN LAS:

1. Log into your LandAirSea's® SilverCloud® Software account.
2. In top left map control, click and go to 'Advanced Options' and select 'Map Overlays'.
3. Upload the .kml files you made from Google Earth.
4. After uploading, the overlays should appear on the map.



GLOBAL HEADQUARTERS:

2040 Dillard Court
Woodstock, IL 60098

Technical Support: +1.888.467.5352

Email: support@landairsea.com

Activation / Website: www.LandAirSea.com

Support Videos: www.LandAirSea.com/videos