



## CONTENTS

2   LUMINESS Airbrush	3   BREEZE 2	4   Product Specs
5   Battery Charging	6   Multi-Speed Settings	8   LUMINESS Airbrush
9   Color Matching	10   BREEZE 2 Getting Started	12   Coverage
14   Targeting Specific Concerns	16   Pro Tips	17   Unblocking Airbrush Head
18   Cleaning Your BREEZE 2	20   Removing Airbrush Head	22   Replacing Airbrush Head
24   FAQs	26   Troubleshooting	27   Warnings

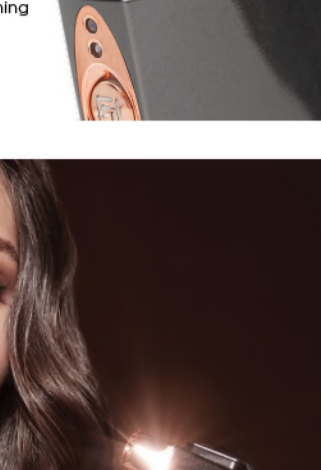
Download the LUMINESS App | 1

## BREEZE 2 AIR-DELIVERED BEAUTY™

The LUMINESS BREEZE 2 is a portable, versatile airbrush system uniquely designed to deliver professional quality results everyday at home with ease. The BREEZE 2 applies makeup and skincare in an ultra-fine mist that effortlessly enhances the face and body. Featuring an exclusive No-Mess Tip, the BREEZE 2 offers control and precision during application for the most natural results that blend seamlessly into the skin. Simply press down with one finger, and the BREEZE 2 transforms skin to reveal a truly flawless finish.

- Portable, handheld and compact
- Features a No-Mess Tip for precise application
- Conceals fine lines, wrinkles and skin imperfections
- Delivers ultra-fine mist application of makeup and skincare
- Self-cleaning mode setting

- Cordless and rechargeable
- Replaceable stylus head
- Works with LUMINESS Airbrush makeup and skincare formulas
- Compatible with other BREEZE 2 Airbrush heads including makeup, haircare, and tanning



## PRODUCT SPECS



ASPRD Battery Type: Lithium Product Power: DC2V Maximum Power: 2W Input: 5V&A Battery Capacity: 3747mAh

Download the LUMINESS App | 1

## HOW TO USE BREEZE 2



© LUMINESSCosmetics.com

## BATTERY CHARGING

**IMPORTANT:** Prior to first use, charge device for 4 hours to ensure ideal battery performance. To ensure optimal performance the LUMINESS Breeze 2 Airbrush should be recharged after each use.

### How to Charge

- Remove silicone stopper from charging port.
- Connect cable onto USB-C charging port on base of device.
- Plug wire into adaptor and insert into power source
- Power light (purple) will blink during charging.
- Power light (Purple) will stop blinking and illuminate solid indicating the system has been fully charged.
- Once charged, replace silicone stopper on to the charging port.

### Auto Shut-Off

This system is equipped with an auto shut-off feature. This enables the system to automatically turn off after 27 minutes of use to preserve battery life.

NOTE: When LED lights blink red, this indicates that the device needs to be charged. ADAPT will activate the single speed setting to conserve battery power.

USAGE TIME: 35 mins for a full charge | Charging Time: 4 hours

If you still continue to have issue with your LUMINESS Breeze 2 Airbrush please contact LUMINESS Customer Service at 1-888-793-7474.

Download the LUMINESS App | 1

To ensure ideal performance, charge device for 4 hours before initial use.

- 1 Dispense desired makeup into makeup well and close lid.
- 2 Turn device on by pressing the power button to desired setting.
- 3 Holding the airbrush system 4-finger widths away from face, pull the trigger slowly and hold for an even application.
- 4 Apply by moving in circular motions around the cheek, nose and chin areas.



NOTE: Avoid spraying directly into the eyes, nose or mouth.

Download the LUMINESS App | 1

## MULTI-SPEED SETTINGS

The LUMINESS BREEZE 2 Airbrush System is designed with multi speed settings. To activate each setting follow the below steps.

**1-Speed**

Recommended for most airbrush formulas and cosmetics.

Press ON/OFF button once to turn device on and activate first speed. LED light will illuminate solid.

**2-Speed\***

Recommended for thicker airbrush cosmetics.

Press ON/OFF button twice to activate low speed. Both LED lights will illuminate solid.

**Clean Mode**

Press and hold the ON/OFF button until LED lights turn on or the above LED lights shut off in 10 seconds. All LED lights will illuminate and blink.

© LUMINESSCosmetics.com

LED lights will light up red when recharging is needed.

\*Available in select markets.

Download the LUMINESS App | 1

## LUMINESS AIRBRUSH

Airbrush makeup has been used for decades as the gold standard to achieve flawless, long-lasting makeup application. Now, with the LUMINESS BREEZE 2, not only is makeup applied using 10X less makeup while achieving 3X more coverage, but you can also apply LUMINESS Skincare in Mist Settings.

- Touchless system allows a safe and hygienic application
- Dermatologist recommended
- Easy to use on face, neck and body
- Easy shade matching and blending
- Customizable coverage with every formula
- Minimizes appearance of pores, wrinkles and fine lines
- Eliminates appearance of redness, blemishes, uneven skin tone

© LUMINESSCosmetics.com

## COLOR MATCHING

1 Shake it up! Remember to always shake airbrush cosmetics. This ensures consistent coverage and optimal color payoff!

### 2 Sample it!

Test each shade on the side of your face by placing a drop on your finger and swiping it on your cheek. Be sure that you are in a well lit area with natural light.

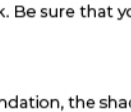
### 3 Choose it!

Test the shade for you is the one that is closest to your current skin tone. When you apply airbrush foundation, the shade will blend into your skin—that's the beauty of airbrush foundation! If you are still not sure which one is right for you, try Step 4.

### 4 Blend it!

If the shade options are not quite right, simply select the two shades that are closest to your skin tone. Drop equal amounts of each shade into the makeup well, then turn on your airbrush system. Hold your finger on the tip of the nozzle and gently pull back on the trigger and you will begin to see a bubble. Make sure not to exceed the clean spray point to ensure it does not overflow. This will perfectly mix the shades together creating a custom blended foundation that blends seamlessly into your skin.

SCAN HERE! Try our virtual shade finder.



Download the LUMINESS App | 1

## BREEZE 2 GETTING STARTED

Ensure system is fully charged before use for optimal performance.

Ensure system airbrush head is properly and securely attached to system body.



SCAN HERE! To learn everything you need to know about airbrushing.

© LUMINESSCosmetics.com

## Airbrush Cosmetics & Skincare

### COSMETICS

- Shake airbrush cosmetics for 30 seconds before first application. This step improves coverage, feel and life of makeup.
- Place 6-8 drops of airbrush foundation into makeup well
- Press ON/OFF button once to turn device on

### SKINCARE

- For skincare, place 4-6 drops of desired skincare into skincare well.
- Press ON/OFF button once to turn device on

© LUMINESSCosmetics.com

## Application

Hold airbrush system 4-finger widths away from face. Using circular motions, follow below steps to ensure an even application.

1. Start by airbrushing side of face
2. Then, move down to chin area
3. Continue down jaw to ensure a blended look
4. Move back up to opposite side of chin
5. Continue to cheek and upper lip areas
6. Move up to forehead area
7. Finally move down T-zone area

Move your hand in circular motions around cheeks and forehead motions back and forth.

- Repeat on opposite side of face, followed by T-zone area
- Apply additional passes as needed to achieve desired coverage



Download the LUMINESS App | 1

## COVERAGE



- STEP 1:** Start with a clean face and apply a light oil-free moisturizer 15 minutes before using airbrush foundation.
- STEP 2:** Apply a first pass of airbrush foundation in a circular motion all over the neck and face.
- STEP 3:** Allow the first pass to dry 3-5 seconds, then apply a second and pass to achieve desired coverage is achieved.
- STEP 4:** Complete by applying your blush and eyeshadow for the perfect look.

© LUMINESSCosmetics.com

## Very Sheer Coverage

Light coverage pass

Spray one sheer pass for light coverage. Using a circular motion, spray lightly by gently pulling the trigger up to the spray position.

### MEDIUM COVERAGE PASS

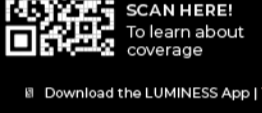
Allow the first pass to dry for approximately 3-5 seconds. Then apply a second pass for more coverage.

### FULL COVERAGE PASS

Apply additional passes as needed. Each pass should be light and applied when the previous pass is completely dry. This will prevent a blotchy and cakey-on finish.

**IMPORTANT:** Never apply a second pass if the first pass is still wet.

Check out the How-To section of LUMINESSCosmetics.com for airbrush demonstrations and other great videos.



SCAN HERE! To learn about coverage.

Download the LUMINESS App | 1

## TARGETING SPECIFIC CONCERNS

Start with targeting your concerns first. Then, proceed with applying 2-3 all-over passes to blend everything together, allowing 3-5 seconds for the product to set in between passes.

Keep in mind, applying too much product can draw more attention to the concern. Start with a light application and build gradually as needed.

For best results, cleanse and hydrate the skin before applying airbrush cosmetics.

© LUMINESSCosmetics.com

## COSMETICS

Start with targeting your concerns first. Then, proceed with applying 2-3 all-over passes to blend everything together, allowing 3-5 seconds for the product to set in between passes.

Keep in mind, applying too much product can draw more attention to the concern. Start with a light application and build gradually as needed.

For best results, cleanse and hydrate the skin before applying airbrush cosmetics.

© LUMINESSCosmetics.com

## UNCLOGGING AIRBRUSH HEAD

If your airbrush system is not properly spraying, follow the below steps to clear out any clogs that could be blocking the air flow.

- 1 Remove the No-Mess Tip by turning to release.
- 2 Unscrew the nozzle cap by turning to release.
- 3 Wipe off any buildup inside of cap if needed.
- 4 Place and screw the nozzle cap back on to the head.

Repeat steps 3-5 if the nozzle is still clogged not spraying.

WARNING: Do not touch nozzle and the nozzle cap back on to ensure it is properly secured. This nozzle is sharp and can cause injury. Always use caution when handling the nozzle.

© LUMINESSCosmetics.com

## PRO TIPS

**Keep a Good Distance**  
We recommend holding the airbrush head approximately 4 finger-widths from the face. Spraying too close will cause the product to apply unevenly.

**Keep Your Hand Moving**  
A seamless application is achieved by constantly moving the hand in circular motions and always spraying lightly. A lack of hand movement will cause uneven application.

**IMPORTANT:** Hold device in an upright, straight position when active.

**Don't Pull All the Way Back**  
When applying, do not pull trigger all the way back to ensure a light, even application.

© LUMINESSCosmetics.com



**CORRECT**  
Keep hand moving and spraying lightly in a circular motion.

**INCORRECT**  
Spraying in a stop-and-go motion will cause spots and blotchiness.

## CLEANING YOUR BREEZE 2

LUMINESS BREEZE 2 is designed to be cleaned after each use. Follow the directions provided to ensure the device is properly cleaned for optimal performance.

The output power taken from the supply must not exceed the rating given on the device in any of the following conditions:

- Type B Applied Part
- Transportation and storage conditions: 20°C to 25°C and 35% to 85% RH.
- Environmental conditions: \*10°C to +45°C and 35% to 85% RH.

© LUMINESSCosmetics.com



1 Place eight (8) drops of water or cleaning solution into the makeup well as shown. The solution will loosen any makeup or residue that has built up through your system head after each use and follow with Step 2.

2 Activate clean mode by pressing and holding power button until LED lights turn on for about 5 seconds.

3 Pull back trigger to heavy setting or into a bathroom sink.

4 Remove any makeup or skincare from the nozzle cap back on to the head. Do not apply excessive pressure to the nozzle cap back on to the head. This may damage your airbrush head.

© LUMINESSCosmetics.com

## REMOVING AIRBRUSH HEAD

Ensure that device is in the Off position before removing or replacing airbrush head.

Turn airbrush head to the left (counterclockwise) to release from the base.

Lift airbrush head from base in an upward motion to remove.

© LUMINESSCosmetics.com



## REPLACING AIRBRUSH HEAD

Align airbrush head to base of device following the indicator markings.

Turn airbrush head clockwise to secure onto base.

Correct airbrush head placement.

© LUMINESSCosmetics.com



DO NOT align airbrush head onto base facing to the right, placing in this position could break the system.

For best performance, it is recommended to replace airbrush stylus every 90-120 days depending on usage.

## FREQUENTLY ASKED QUESTIONS

**Can I use traditional makeup in the BREEZE 2 Airbrush?**  
The use of traditional makeup is not recommended as this can cause the airbrush head to clog. Our makeup formulas are specially formulated to be used with the airbrush.

**How often do I need to clean the Airbrush Head?**  
The airbrush head should be cleaned after each use to ensure ideal performance following the cleaning directions provided.

**IMPORTANT:** Do not submerge in water. Do not handle with wet hands.

**Can I use Airbrush Skincare in the BREEZE 2 Airbrush?**  
Yes, LUMINESS Airbrush Skincare can be used with the Breeze 2 Airbrush using the skincare head.

For any additional questions, please contact our customer service at 1-888-793-7474

© LUMINESSCosmetics.com

## Warnings Use Only as Directed

**IMPORTANT BATTERY WARNING**  
This product contains Li-Ion batteries and should be recycled or disposed of per local and state guidelines.

- Do not expose or dispose of this device in fire.
- Charging or storing at temperatures below 40°F or higher than 95°F adversely affects lifetime of battery.

**WHEN NOT TO USE**  
The LUMINESS BREEZE 2 Airbrush is designed to be used in accordance with the manufacturer's recommended procedures and guidelines. Improper use or operation could void this warranty. Defects or damages resulting from that which is not certified products or accessories are excluded from coverage and will void the warranty.

**Unauthorized service or modification.**  
All products must be installed and operated in accordance with the manufacturer's recommended procedures and guidelines. Improper use or installation could void this warranty. Defects or damages resulting from that which is not certified products or accessories are excluded from coverage and will void the warranty.

**Unapproved service or modification.**  
All products must be installed and operated in accordance with the manufacturer's recommended procedures and guidelines. Improper use or installation could void this warranty. Defects or damages resulting from that which is not certified products or accessories are excluded from coverage and will void the warranty.

**Customer may be requested to present the proof of purchase as required. This warranty extends only to the original consumer purchaser, and is not transferable.**

**How to Obtain Warranty Service:** Contact LUMINESS to obtain a pre-authorized WVRN by calling 1-888-793-7474, by mail write to: LUMINESS Attn: Customer Service, P.O. BOX 632587, Houston, TX 77263-0587 or by email to help@LUMINESSCosmetics.com

© LUMINESSCosmetics.com

Shipping -in or -out costs are not covered by warranty. Customer is responsible for properly packaging the product, paying all shipping costs, loss or damage of the product during shipping to LUMINESS warranty center, and any other taxes and fees or charges associated with transporting the product to an authorized facility. Customer shall also pay shipping and handling charges for return of serviced or replaced product from LUMINESS as applicable. All returned items for replacement must be returned to our third party fulfillment processor at LUMINESS Direct, LLC, 12092 Capricorn St., Stafford, TX 77477.

**ATTENTION:** To protect your interest, please fill out all relevant registration documents for the product and mail the registration to LUMINESS. You may also visit our website, LUMINESSCosmetics.com/warranty, to register your LUMINESS Airbrush.

It is possible to extend the warranty period through the purchase of an extended warranty from LUMINESS which extends coverage to 24 months under the same terms and conditions.

© LUMINESSCosmetics.com

## One-Year Limited Warranty

LUMINESS BREEZE 2 Airbrush's that are used under normal residential conditions in the United States are warranted to be free of defects in material and workmanship for ONE (1) year from the date of purchase.

- Product warranty: Item covered under this warranty include the LUMINESS BREEZE 2 Airbrush and charging cord.
- Conditions: Product must be assembled and used per the directions provided in product instruction guide that was included in the original package.

**Exclusions: This warranty will not apply to the damages caused by the following situations:**

- Abuse and Misuse, Defects or Damage that result from: (a) physical operation, improper electrical connection, improper storage, misuse or abuse, accident or neglect such as improper damage (cracks, scratches, etc.) to the surface of the product resulting from misuse and loss part; (b) contact with liquid, water, rain, extreme humidity or heavy perspiration, salt, dirt or the like, extreme heat or frost; (c) use of the product for commercial purposes or subjecting the product to abnormal

Please note that changes or modifications of this product is not expressly approved by the party responsible for compliance could void the user's authority to operate the equipment.

NOTE: This equipment has been tested and found to comply with the limits for a Class B digital device, pursuant to Part 15 of the FCC Rules. These limits are designed to provide reasonable protection against harmful interference in a residential installation. This equipment generates, uses, and can radiate radio frequency energy and, if not installed and used in accordance with the instructions, may cause harmful interference to radio communications. However, there is no guarantee that interference will not occur in a particular installation.

If this equipment does cause harmful interference to radio or television reception, which can be determined by turning the

• Never put the LUMINESS BREEZE 2 Airbrush in direct sunlight or store at a temperature above 140°F.

• Keep the LUMINESS BREEZE 2 cord dry at all times. Do not handle with wet hands. Do not store in a damp environment.

• Never attempt to open any part of the device.

• To prevent possible damage to the cord, do not wrap cord around the LUMINESS BREEZE 2 Airbrush.

Please read and fully understand this manual before operation. This device is solely intended for cosmetic use on face.

The device is fully intended for cosmetic use on face. Any harmful consequences resulting from misuse or application to other body areas, or any other improper applications is the responsibility of LUMINESS Direct, LLC or its affiliates.

© LUMINESSCosmetics.com

This device complies with Part 15 of the FCC Rules. Operation is subject to the following two conditions: (1) this device may not cause harmful interference, and (2) this device must accept any interference received, including interference that may cause undesired operation.

Please note that changes or modifications of this product is not expressly approved by the party responsible for compliance could void the user's authority to operate the equipment.

NOTE: This equipment has been tested and found to comply with the limits for a Class B digital device, pursuant to Part 15 of the FCC Rules. These limits are designed to provide reasonable protection against harmful interference in a residential installation. This equipment generates, uses, and can radiate radio frequency energy and, if not installed and used in accordance with the instructions, may cause harmful interference to radio communications. However, there is no guarantee that interference will not occur in a particular installation.

If this equipment does cause harmful interference to radio or television reception, which can be determined by turning the

• Shipping -in or -out costs are not covered by warranty. Customer is responsible for properly packaging the product, paying all shipping costs, loss or damage of the product during shipping to LUMINESS warranty center, and any other taxes and fees or charges associated with transporting the product to an authorized facility. Customer shall also pay shipping and handling charges for return of serviced or replaced product from LUMINESS as applicable. All returned items for replacement must be returned to our third party fulfillment processor at LUMINESS Direct, LLC, 12092 Capricorn St., Stafford, TX 77477.

**ATTENTION:** To protect your interest, please fill out all relevant registration documents for the product and mail the registration to LUMINESS. You may also visit our website, LUMINESSCosmetics.com/warranty, to register your LUMINESS Airbrush.

It is possible to extend the warranty period through the purchase of an extended warranty from LUMINESS which extends coverage to 24 months under the same terms and conditions.

© LUMINESSCosmetics.com

equipment off and on, the user is encouraged to try to correct the interference by one or more of the following measures:

- Reorient or relocate the receiving antenna.
- Increase the separation between the equipment and receiver.
- Connect the equipment into an outlet on a circuit different from that to which the receiver is connected.
- Consult the dealer or an experienced radio/TV technician for help.

Responsible Party: Information LUMINESS Direct, LLC, 12092 Capricorn St., Stafford, TX 77477, 1-888-793-7474.

## DANGER

To reduce the risk of electric shock:

- Do not reach for the LUMINESS BREEZE 2 Airbrush that is charging and has fallen into water.
- Do not immerse LUMINESS BREEZE 2 Airbrush in water or use in shower.
- Do not place or store the LUMINESS BREEZE 2 Airbrush where it can fall or be pulled into a tub or sink.
- Do not use an extension cord with LUMINESS BREEZE 2 Airbrush.
- Do not plug and remove power supply cord from LUMINESS BREEZE 2 Airbrush before cleaning.

**IMPORTANT SAFETY CONCERNS**  
To reduce the risk of burns, fire, electric shock, or injury to persons:

- Never operate the LUMINESS BREEZE 2 Airbrush if it has a damaged cord, or if it is not working properly. If it has been dropped or damaged, or dropped into water while plugged in.
- Keep LUMINESS BREEZE 2 Airbrush and charging cord away from heated surfaces.
- Never drop or insert any object into any opening.

© LUMINESSCosmetics.com

## IMPORTANT SAFETY INSTRUCTIONS - SAVE THESE INSTRUCTIONS AND DANGER - CAREFULLY FOLLOW THESE INSTRUCTIONS

- The power supply is certified according to the relevant safety standards UL 137