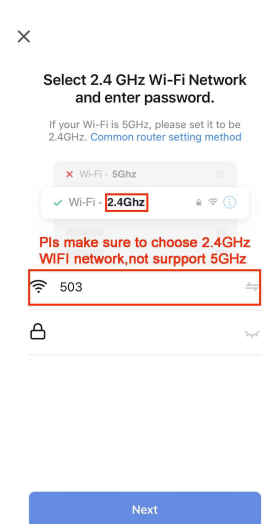
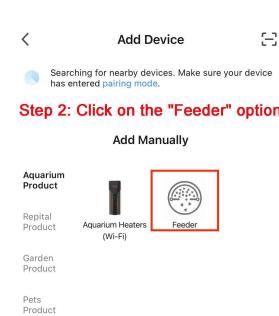
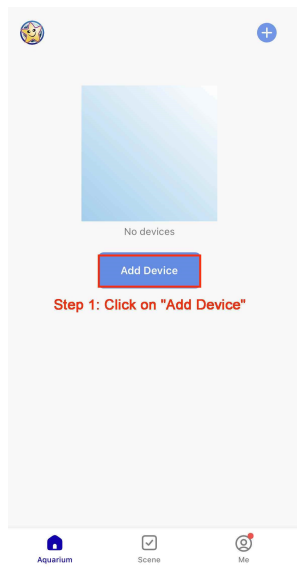


How to Connect by EZ Mode (Default Mode)

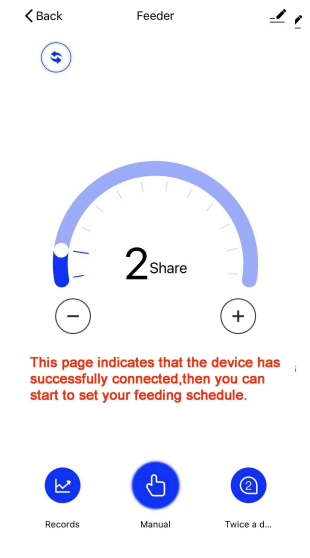
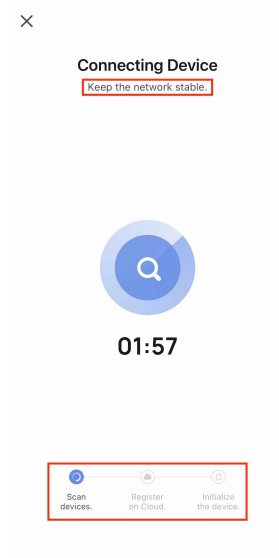
Step 1: Click on "Add Device" **Step 2:** Click on the "Feeder" option **Step 3:** Connect to the 2.4GHz network



Step 4: The default connecting mode is EZ mode. Pls follow the resetting device step by step to reset the device firstly to make sure the indicator flashes red quickly.



Step 5: Confirm the indicator flashes red quickly and press "next". Device will be connected with your WIFI network automatically, then you can start to set your feeding schedule.



Tips: If failed, pls unplug the power cord and plug in 10 seconds later to reset the device again(pls follow the resetting device steps showed in **Step 4**).If EZ mode is difficult to connect, pls select AP mode to connect.

How to Connect by AP Mode

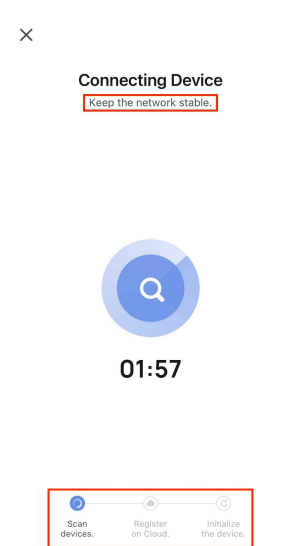
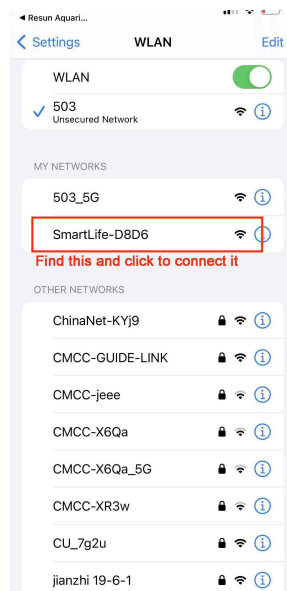
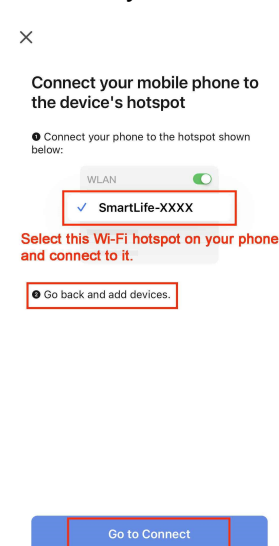
Step 1: Pls follow the resetting device step by step to reset the device firstly to make sure the indicator flashes red slowly.



Step 2: Confirm the indicator flashes red slowly and press “next”.



Step 3: Pls connect your mobile phone to the device's hotspot “smartlife-XXXX” then return to app and continue adding devices. Device will be connected with your WIFI network automatically, then you can start to set your feeding schedule.



Tips: If failed, pls unplug the power cord and plug in 10 seconds later to reset the device again(pls follow the resetting device steps showed in **Step 1**).