



Multifunction Remote Scrolling Ring

User Manual

Two Working Modes

- 1) Video Mode: functiona as a remote for short video apps and reading apps like TikTok & books.
2) Music Mode: function as a remote for music apps like Spotify, Apple Music.

Mode	Video Mode	Music Mode
Compatibility	Short video apps: TikTok	Music app: Spotify, Apple Music
	Reading apps on smartphones: Kindle app	Phone call
	Built-in camera apps	
	NOT for kindle devices and other eReader devices like Kindle Paperwhite and Kindle Oasis, Huawei P50 folding phone.	

Tips

- Please select the appropriate mode for the desired functionality: video mode for TikTok & reading apps, and music mode for music apps.

01

Using on TikTok

Step		iOS Devices	Android Devices
		Settings>Accessibility>touch> turn on AssistiveTouch	Settings>Bluetooth
Step 1	Turn on “AssistiveTouch” if using iOS devices. And if you use Android devices, please turn on “Call audio”.		
Step 2	Power on the ring	Press and hold the middle button for one second until the indicator flashes red and blue alternately.	
Step 3	Pair with the Bluetooth device “D01 Pro”	Settings >> Bluetooth >> Search Bluetooth device “D01 Pro”>> Click to connect device>> Finish Bluetooth connection, you can use the ring.	
Step 4	Open TikTok	Press the button to check if it works. If not, please switch to video mode first. Press both the up and down button at the same time until the indicator flashes purple 3 times.	

02

Using on TikTok

- Button’ s Function on TikTok

- Single Click: Next video
- Double Click : Swipe left
- Long Press: Volume +
- Single Click: Play / Pause
- Double Click : Like
- Long Press for seconds : Screen off
- Single Click : Previous video
- Double Click: Swipe right
- Long Press: Volume-

03

Using on Music Apps

Step 1	Turn on “AssistiveTouch” for iOS devices or enable “Call audio” for Android devices. Refer to page 2 for detailed instructions.
Step 2	Power on the ring. Refer to page 2, step 2.
Step 3	Pair with the Bluetooth device “D01 Pro”. Refer to page 2, step 3.
Step 4	Open a music app like Spotify and press the up/down button to check if it works. If not, please switch to music mode first. Press both the up and down button at the same time until the indicator flashes purple 3 times. Switching Mode Switch Successfully

04

Button’ s Function on Music Apps

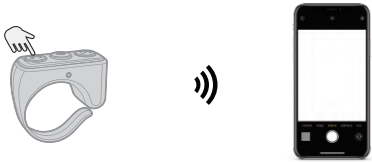
- Single-Click: Previous song
- Double-Click: Lock screen
- Press and Hold: volume -
- Single-Click: Pause/Restart music; Answer/End the phone call
- Double-Click: Reject phone call; Call the last dialed phone number
- Long Press for 1 Seconds: Wake up/Stop siri
- Single-Click: Next song
- Double-Click: Go back to the previous page
- Press and Hold: volume +

05

Taking Photos/Videos with the Built-in Camera App

Step 1. Switch to video mode. Refer to page 2, step 4 for detailed instructions.

- 1) **Take pictures.** Long press the up/down button for 2 seconds.
2) **Take videos.** Long press the up/down button for 2 seconds to start/stop video recording.



Reading on the Kindle App

Tips: Only for the Kindle app, not for any Kindle devices such as the Kindle Paperwhite and the Kindle Oasis...

Step 1. Switch to video mode. Refer to page 2, step 4 for detailed instructions.

Step 2. Turn off “Continuous Scrolling”. Aa > Layout > turn off Continuous Scrolling

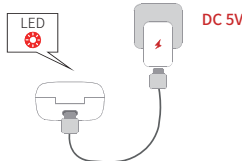
Step 3. Open the Kindle app and double-click the up/down button to turn the page forward and backward.



06

Charging

1) Charge the charging case



Components	Charging	Fully charged
Charging case	Red light flashing slowly	Steady red light

2) Only charge the ring



Components	Charging	Fully charged
Charging case (the ring in the case)	Steady blue light	Blue light off

Low Battery Warning

- When the indicator on the ring and charging case flashes red slowly, it indicates low battery and requires charging.

07

FAQ

Q: Why the Remote Ring Does Not Work?

- A1: Make sure iOS is 14.8 or above.
A2: Make sure the “AssistiveTouch” is turned on if using an iOS device. Please refer to page 2 for detailed instruction.
A3: Make sure the ring is in correct mode. Please refer to page 2 and step 4 for detailed instruction.

Q: Why can't the ring scroll up/down on TikTok even after switching to short video mode and turning on 'AssistiveTouch'?

- A: Please adjust the position of the small white dot to 1/3 of the screen. Refer to the final page for detailed instructions.

Q: How can I know which mode the remote ring is currently in?

- A1: Double-click the middle button. If your phone makes a call, it's in music mode. Otherwise, it's in video mode.
A2: Open TikTok and press the button to see if the remote ring controls it. If yes, it's in video mode.

Q: Why couldn't connect the Bluetooth "D01 Pro"?

- A: The ring has automatically connected to the last paired device. Please disconnect Bluetooth before connecting to another smartphone or tablet.

Q: Will it work with a Bluetooth headset or speaker?

- A: Yes, it can work with Bluetooth headset or speaker

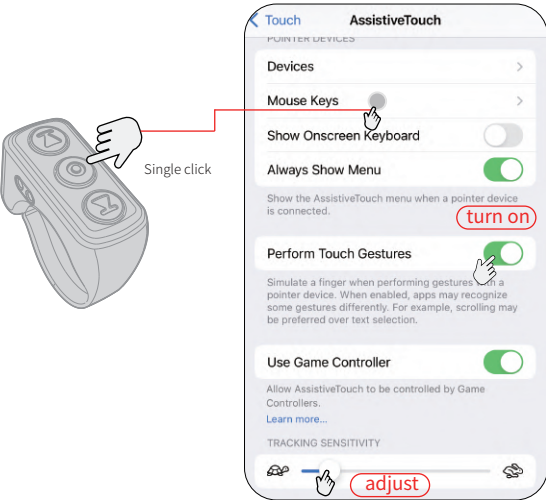
Q: Does it work with the foldable phone?

- A: Yes, it works with foldable phones. Ensure the phone is unfolded and held upright. If it still doesn't work, try restarting your phone.

08

How to Move the Small White Dot

- 1) Step 1. Settings > Accessibility > touch > AssistiveTouch > turn on Use Game Controller
2) Step 2. Adjust the tracking sensitivity by swiping left or right.
3) Step 3. Single click the middle button to adjust the position of the small white dot.



09