

Wireless IP Camera User' s Manual



Note: Due to the continuous updating of the product and software, there may be a discrepancy between the operating guide and the APP interface. All the instructions are subject to the actual operation interface.

Contents

I .Introduction

We'd like to thank you for buying Wireless IP Camera. You will soon find that you love everything that this fantastic security camera offered. In this user guide, we'll cover everything you want to know about the camera, including how to download the MIPC app, how to connect your home network in different ways, how to control it and more. With this manual, you will find that it is very easy to us.

1.1.What Is the Wireless IP Camera?

The Wireless IP Camera offers users a number of functions that help to make it an ideal solution to those looking for added security and peace of mind in both home and office settings. It offers:

- 720p/1080p video quality
- Real Time motion alerts with snapshots and video record
- Reliable IR night vision even in a low light condition
- Zoom in to get a better view of a specific area
- Communicate with people (or pets) in the viewing area
- Guest password for your account and your device
- Bind your email to get back your forgotten password
- Supports iOS device, Android device and Computer
- Remote monitoring and controlling from anywhere with Wi-Fi/3G/4G network



II.Introduction

2.1 Downloading the MIPC App

There are several ways to download the MIPC application. These include:

- Scan QR code with the phone, to download and install the application " MIPC "



- Download ' MIPC ' APP from APP Store(iOS) or Google Play Store(Android).
- PC users please download our APP: www.mipcm.com.

2.2 Creating an Account

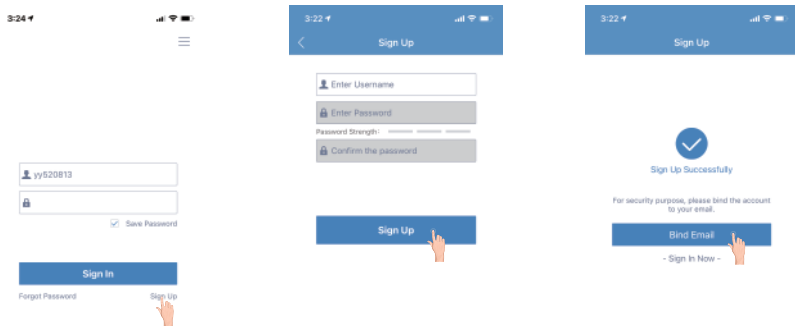
To use the camera, you will need to set up an account with MIPC.

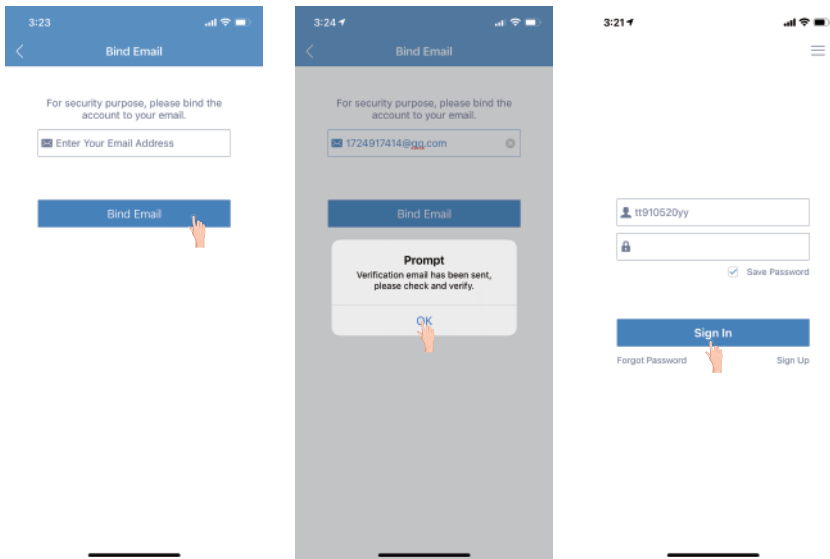
To create an account:

- In the MIPC app on your mobile device,press I am a new user Sign up .
- The Sign Up page opens. Create a User name and a Password.

Logging in to the MIPC Account

- Locate the Sign in link:
- Enter your user name and password in the appropriate fields.
- Click Sign in.

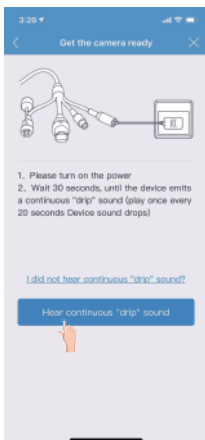
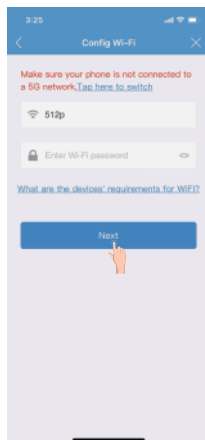
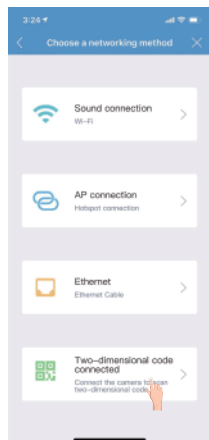
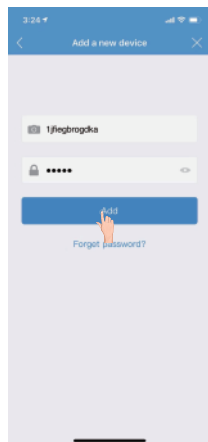
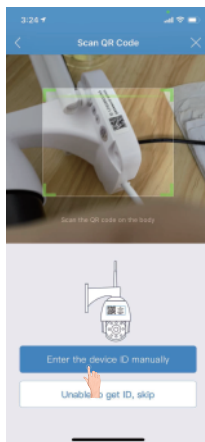
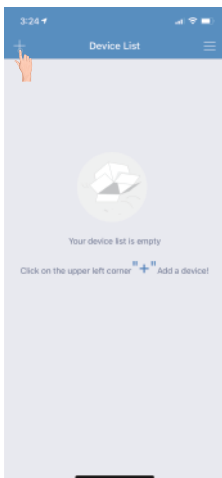


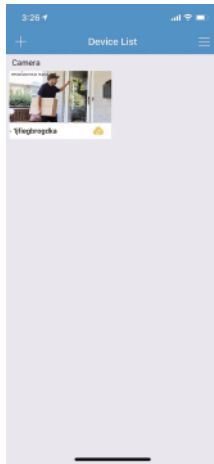
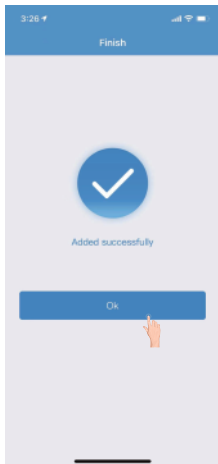


2.3. Wi-Fi Connection Setup through Wi-Fi Mode

Before connecting to your camera, please confirm your home Wi-Fi network is 2.4G. Meanwhile, please choose 2.4G WiFi to connect your phone. Additionally, please put this camera more close to your router, it will help you to connect your home Wi-Fi successfully.

1. After successfully register and sign in, you should be brought to the camera list screen. You can see it's initially empty because you have not added any camera for it (Figure 1);
2. Select "add device" by clicking the plus icon at the top of left and select the device mode (Figure 2), which will direct you to the QR Code Scan page;
3. Scan the QR code at the camera (Figure 3); a device ID should be automatically filled in the "device ID" input box (Figure 4) if it scans successfully, and then click "Add".
4. Select "Two-dimensional code connected" mode
5. Enter the WIFI password (Attention: Support 2.4G WIFI, not support 5G WIFI. The password is not supposed to include special symbol, should completed in letters and numbers)
6. When the camera start up, there will be drips voice (means camera is connecting the network), if no drips voice please press "reset" button and hold on till the camera voice "reset successfully", then wait the camera start up.
7. Put the two-dimensional code on your phone at camera lens, wait the camera connect network.
8. Finish adding camera

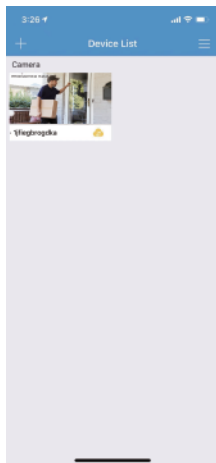




III. Using Apps for iPhone and Android

3.1 Camera List Previews

The camera list panel contains all cameras you have added to your account. Each preview picture has various indicators for online, password changed status, offline or alarm.



3.2 More (Account Settings)

The MIPC app offers you access to view, monitor and configure your devices. The app also has an option to view or configure your Account information. MIPC enables you to configure two types of settings: Account settings and Device settings. For information on Device settings, see Overview of the Settings Page

When you click the Account option, the following options appear:

- **My folder**
- **Settings**
- **Exit**

Any videos or snapshots that you take manually, or any scheduled videos that you choose to download to your mobile device are stored in your My folder location. The Settings page for iOS and Android are very similar. Minor differences are Account Settings for Mobile Devices indicated below. The Settings page for mobile devices contains the following options:

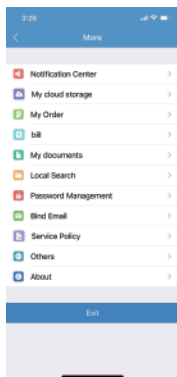
- **Notification Center:** Set the alarm mode, select the sound or vibration.
- **In the Password section:**

User admin password: Enter the Old password, and a new password, and then enter the new password again in the Confirm password field.

User guest password: If you wish to allow someone access to your Camera, you can assign them a user guest password, which can be disabled at any time. Guests can view what the cameras are broadcasting and can move the cameras, but they will not be able to make any changes in the settings or use the remote microphone.

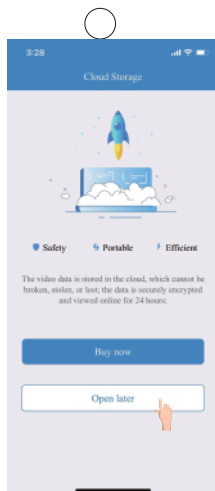
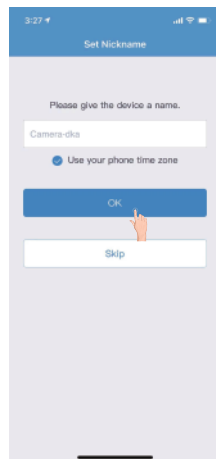
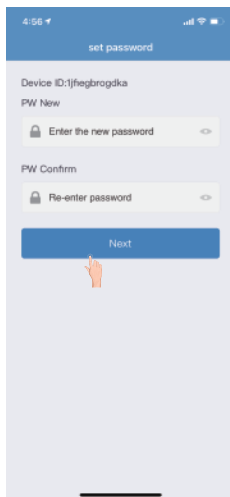
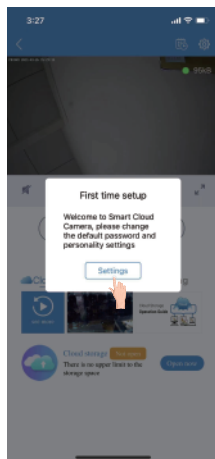
- **Connect email:** Enter an email address. This is the email account to which Notification is sent when you ask to reset your password.
- **Software version:**

At the bottom of the screen, there is a Clear cache button. Click this to clear the cache on your mobile device. The original snapshots and/or videos stored on either your SD card or your Storage Device are not deleted when you click Clear Cache



3.3 Watch a Camera's Live Video

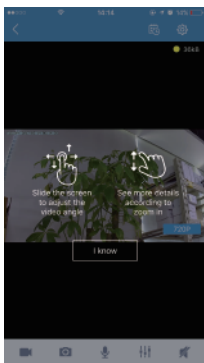
When the first time you watch the live video, APP will prompt user to set the camera password (please remember this password), then click Next into the next step to set the camera name, then skip the cloud storage buying, when finish above settings it will auto back to the camera list.



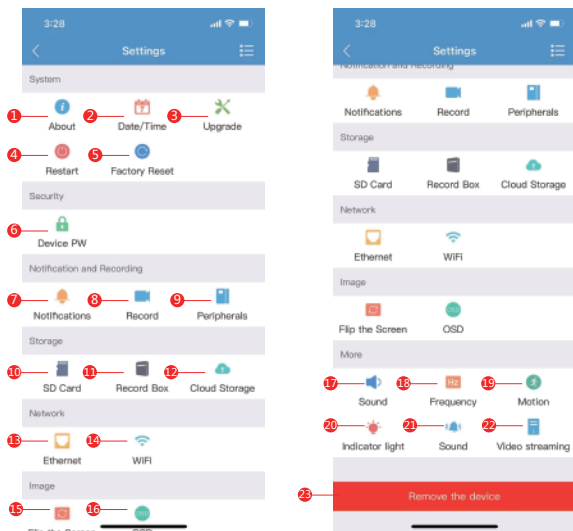
- 1.Back button
- 2.Camera name
- 3.Video playback shortcut button
- 4.Camera settings
- 5.Time stamp
- 6.Current network speed
- 7.Speaker switch
- 8.Screen adjustment (brightness, contrast, saturation, sharpness)
- 9.Resolution button
- 10.Full screen
- 11.Record(Record to the album)
- 12.Take photos(Storage to the album)
- 13.Microphone(Hold the button to speak)
- 14.Alarm bells
- 15.Cloud recording
- 16.SD recording
- 17.Playback button

3.4 Pan, Tilt, Zoom

- **Pan:** Touch and swipe to the left or right to rotate the camera left or right.
- **Tilt:** Likewise, touch and swipe up or down to tilt the camera view up or down.
- **Zoom:** Zoom is accomplish two fingers touching the screen as if to pinch.Move two touching fingers apart to zoom in;Move two fingers together to zoom out.



3.5 Camera settings

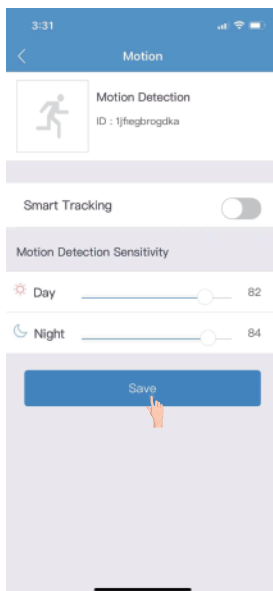
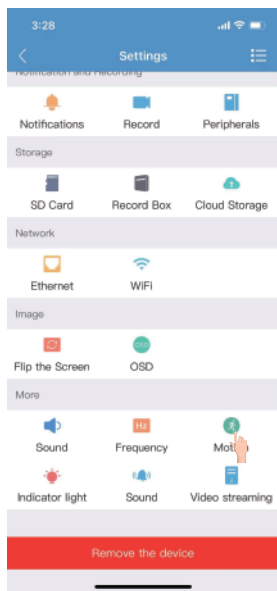


- 1.About (include camera name, model, firmware version, camera ID)
- 2.Date (Set the date, time and time zone)
- 3.Upgrade (Update the firmware version)
- 4.Restart
- 5.Factory Reset
- 6.Device PW (User could set or change the camera password, and set the guest password. Camera admin password can change the camera settings, guest password can only watch the video)
- 7.Notifications (Could set the time of motion detection, sound detection and human detection. Also could set the notification switch)
- 8.Record (Can set loop recording, alarm recording and record mode)
- 9.Peripheral (Switch and sensitivity adjustment for sound detection, human detection)
- 10.SD Card (Format of SD card, turn on or off)
- 11.Record Box (Camera can connect the cloud box to storage the video)
- 12.Cloud Storage (User can buy the cloud storage)
- 13.Ethernet

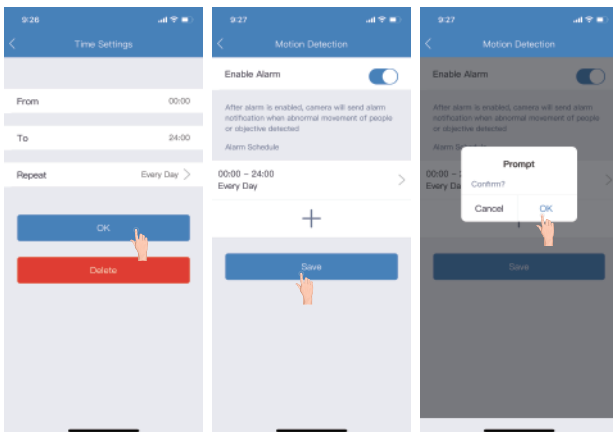
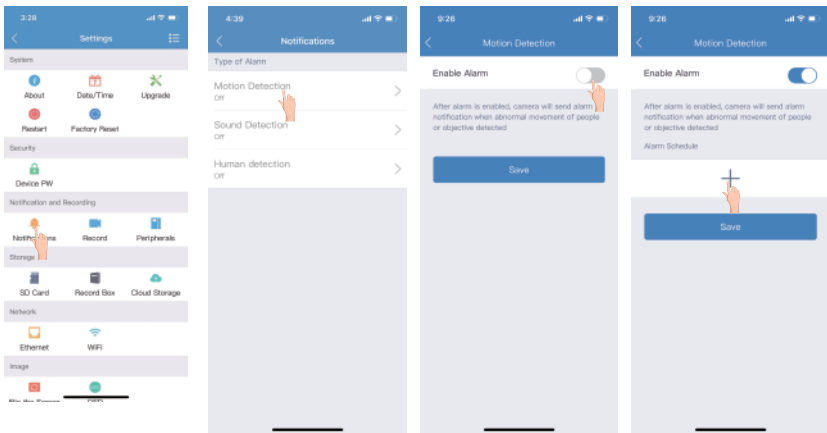
- 14.WIFI
- 15.Flip the Screen
- 16.OSD (Can set the time stamp)
- 17.Sound (Adjust the volume of speaker and MIC. Also the tone)
- 18.Frequency (50HZ/60HZ)
- 19.Motion (Turn on the motion detection and adjust the sensitivity)
- 20.Indicator light (Some product don't have this)
- 21.Alarm (To sound away intruders or animals)
- 22.Video streaming
- 23.Remove the device

3.6 Motion detection setting

Select the Motion in Settings (User can turn motion detection on or off as needed, also the sensitivity 0-100, 0 is the lowest, 100 is the highest)



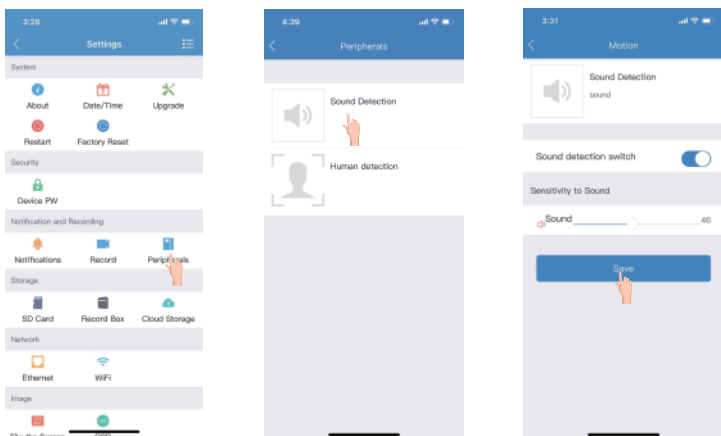
And now the notification detection, select “motion detection” to turn on the notification, click “+” to set the time of make notification, click Save to finish the motion detection setting.



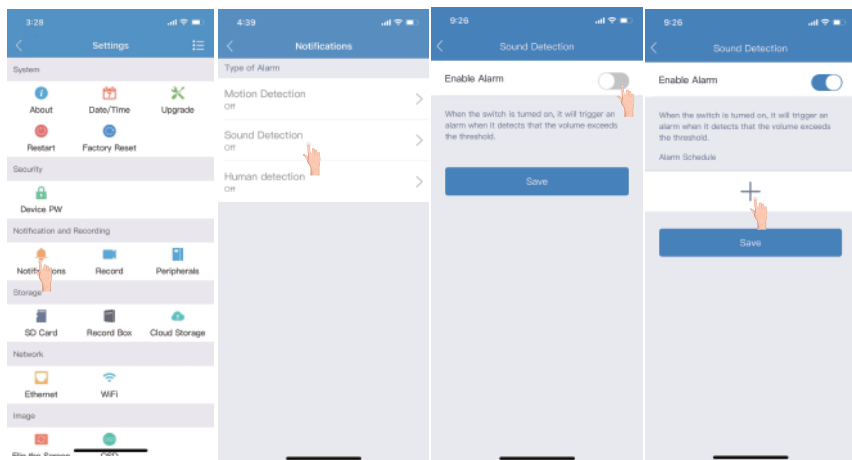
Attention: After turn on the motion detection, you must turn on the alarm and set the time, otherwise there will be only the video but don't make alert

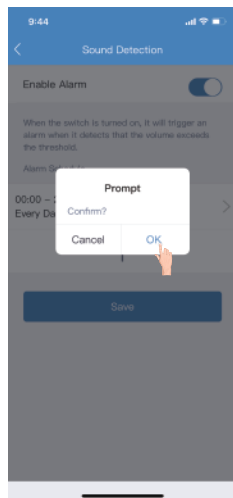
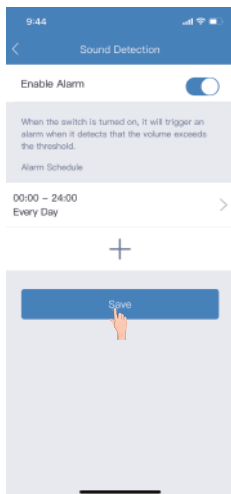
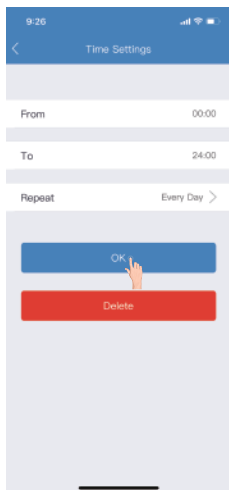
3.7 Sound detection setting

Select the Peripheral in settings, click the Sound Detection (Users can turn on or off sound detection as needed, also the sensitivity 0-100, 0 is the lowest, 100 is the highest), then click Save to finish.



Now the Alarm, select the Sound Detection and turn on the switch, select "+" to set the time to make alarm, then click Save to finish.

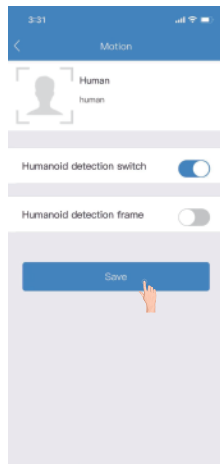
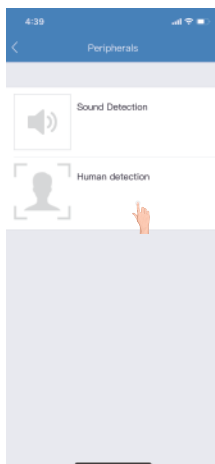
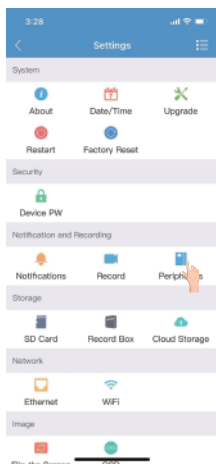




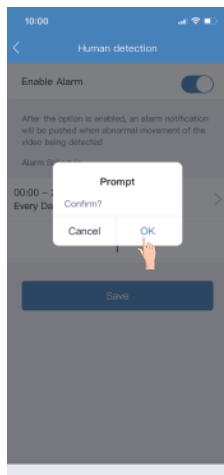
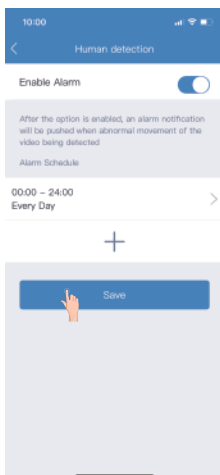
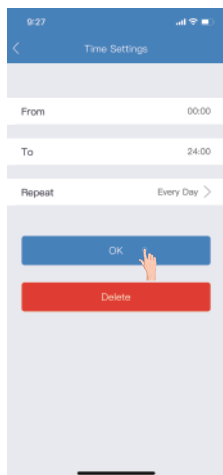
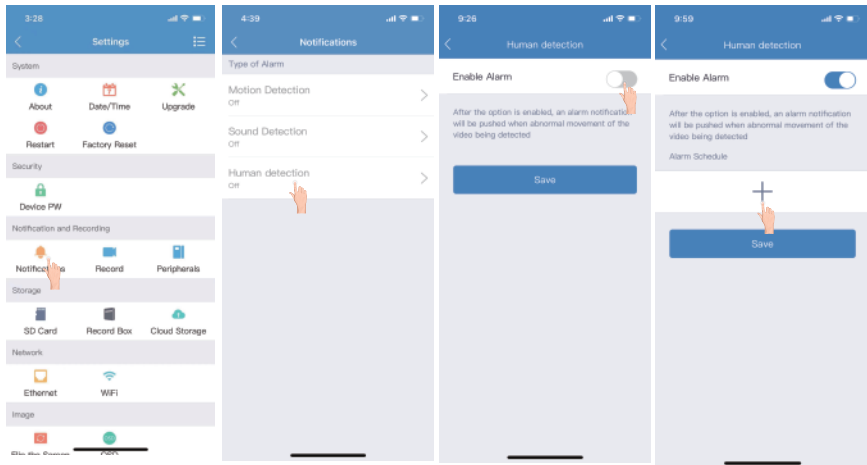
Attention: After turn on the sould detection, you must turn on the alarm and set the time, otherwise there will be only the video but don't make alert

3.8 Human detection settings

Select the Peripheral in settings, click the Human Detection (Users can turn on or off human detection as needed, also can turn on or off the detection frame), then click Save to finish.



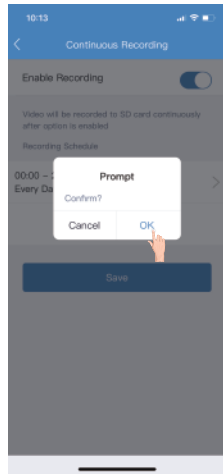
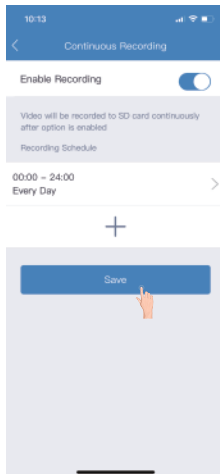
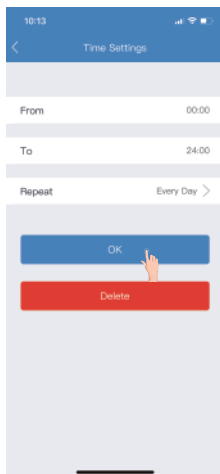
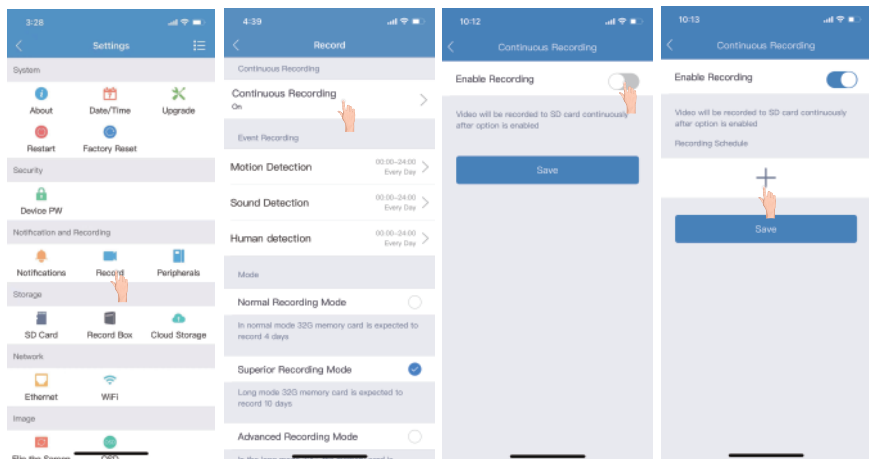
Now the Alarm, select the Human Detection and turn on the switch, select "+" to set the time to make alarm, then click Save to finish.



Attention: After turn on the human detection, you must turn on the alarm and set the time, otherwise there will be only the video but don't make alert

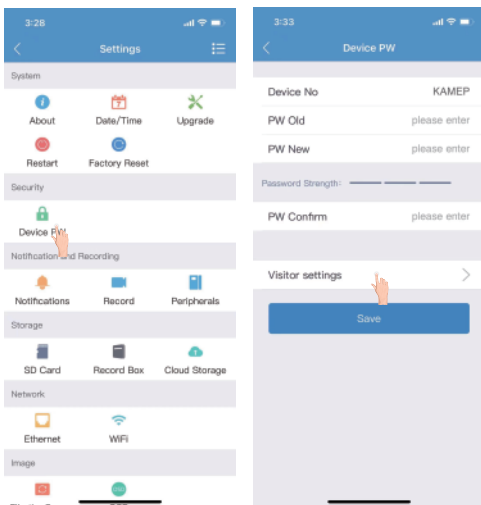
3.9 Record setting

Select the Record in Settings, choose the Continuous Recording or Alarm Recording, choose the event recording, then set the time and save to finish.



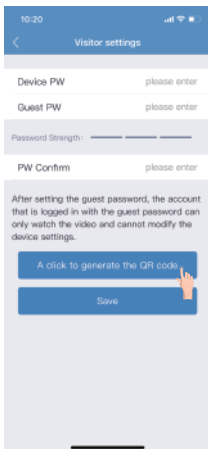
3.10 Camera password and camera sharing

Select the Device PW in Settings, users can change the password and visitor setting here.



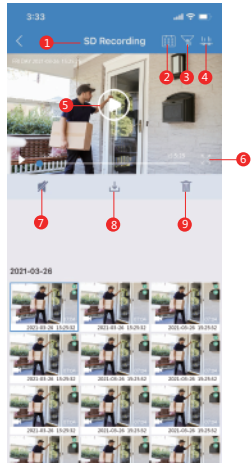
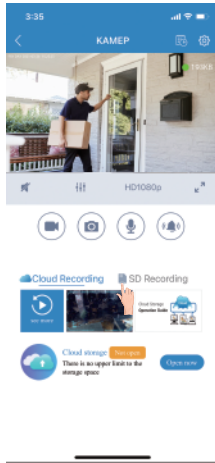
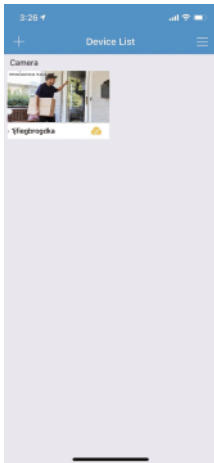
3.10.1 Visitor settings and user sharing

Enable the Visitor settings, enter the camera admin password, then set the visitor password (visitor password is used to share watching video), then click "A click to generate the QR code". Other users need to download "MIPC" APP, register and login, add the camera, scan the QR code.



4.1 Playback

Enable APP, choose the camera in camera list, select Cloud Recording or SD Recording, then choose the record to playback.

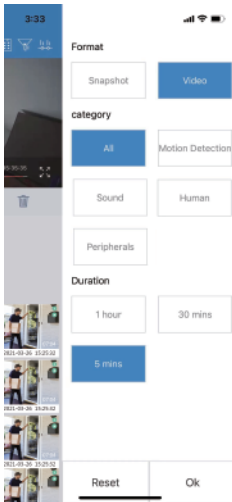


- 1.Record location
- 2.Date (User can choose the playback date as needed)
- 3.Filtering (Users can choose the format, category and duration of playback according as needed)
- 4.Timeline playback mode
- 5.Play/Pause button
- 6.Full screen
- 7.Sound switch
- 8.Download (Users can choose to download and save to the album)
- 9.Delete the video

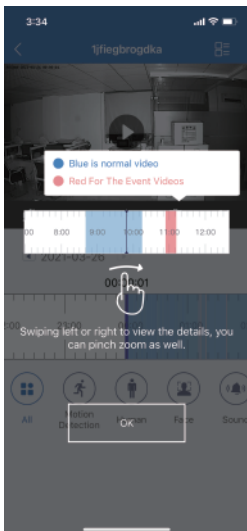
4.1.1 Playback date



4.1.2 Filtering



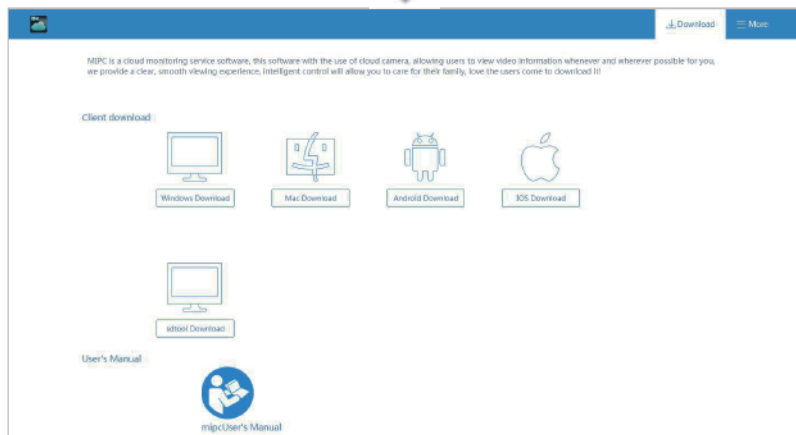
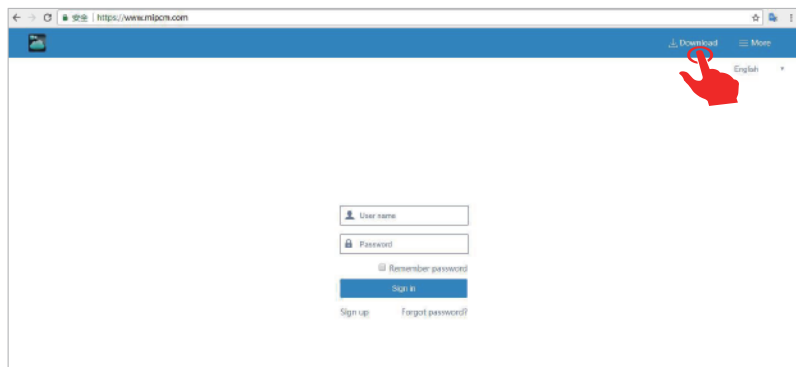
4.1.3 Timeline playback mode



V.Using the MIPC PC client

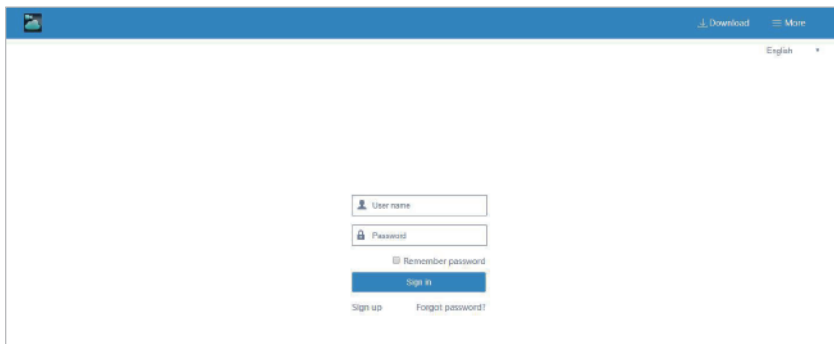
5.1 PC client download

Download MIPC client from your PC Windows or Mac as directed from this website: www.mipcm.com

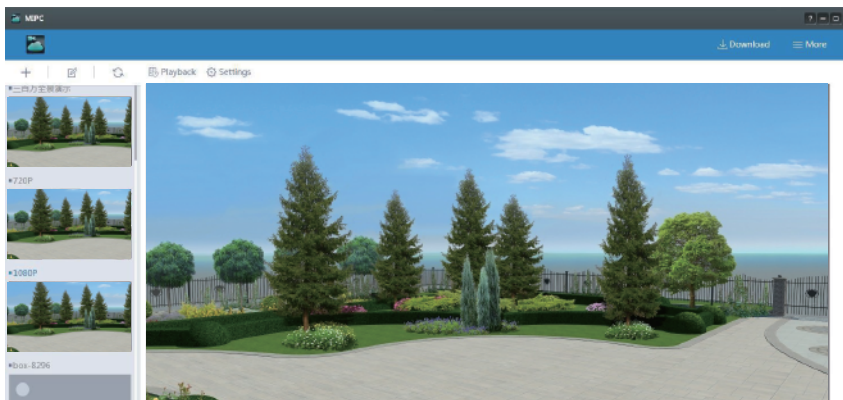


5.2 Log In & Sign Up

- Log on to the MIPC PC client. The following window appears:

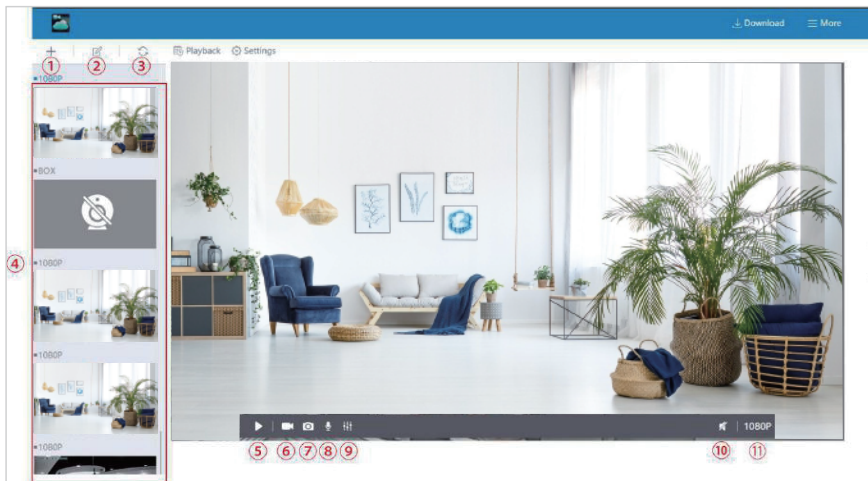


- Enter your User name and Password, and click Sign in. (If you are a new user, Select “Sign up” and create a Username and Password.)
- The website interface opens. If devices have been added, the current image for each active device is shown in the dashboard.



5.3 View a camera' s live video

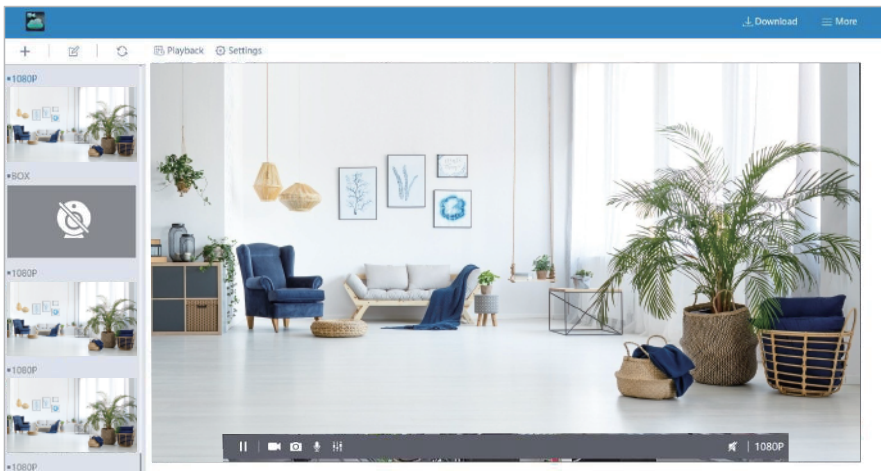
To view a camera's live video, touch a preview picture. Click on the video screen will show a navigation bar with Buttons of record, snapshot, microphone and Image setting.



The following icons are located on each video image on the screen:

- ①Record: to initiate a live recording.
- ②Snapshot: to create a snapshot image of the current view.
- ③Microphone: to transmit your voice through the device.
- ④Image setting: which enables you to set the mode for brightness, contrast, saturation, etc.
- ⑤Stop/ Play: Press the button and you will be able to see the live feed.
- ⑥Speaker: to transmit remote sounds.
- ⑦History Access: which opens to the History page and a filter.
- ⑧Device settings: which opens with a list of Settings tabs.
- ⑨Resolution: user can choose the resolution of the images.
- ⑩Full screen view: Click to watch live video full screen.

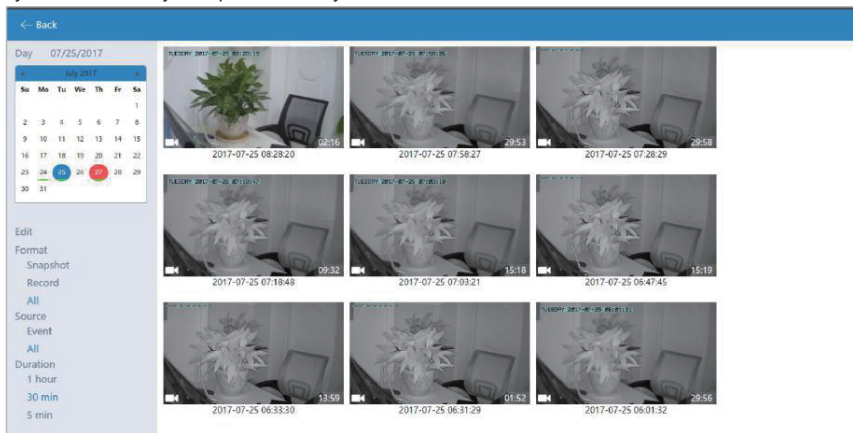
5.4 Pan, Tilt



(<> ^ ~) On computers only: move camera left, right, up and down using directional controls. These controls are only available as you move the mouse to hover over the display edges (top,bottom, left and right in the middle). Not all cameras provide the full range of rotation, panning, tilting, etc. Note:The screen can not be zoomed on the computer.

5.5 History access

If you do not have an SD card in your camera, this will be a blank screen. If you do have an SD card in your camera and you capture videos, you will see a list of videos on the this screen.



- Day: Quickly view video time
- Edit: Delete the video
- Snapshot: Clicking on one of the pictures will open up the image into a separate popup, making it larger and easier to see.
- Record : Under the Records column, it will show you whether the record indicates video.
- Event: Display motion detection video.
- Duration: Select the length of each video recording, the default is half an hour.

5.6 Settings

About	
Nickname	Model
Admin password	Firmware Version
Guest password	Plug-in version
Network	Device ID
OSD	
SD Card	
Storage Device	
Motion sensitivity	
Motion detection	
Schedule Alerts	
Schedule Record	
Day/Time	
System	
Others	
Delete	

- About : Provides information about your device.
- Nickname : Set a user-friendly name for your device.
- Admin Password : Change the Admin password for device.
- Guest Password : Create a Guest password for device.
- Network: Configure network settings.
- OSD (On Screen Display): Modify the on-screen display settings.
- SD Card: Enable the use of an SD Card. You can also format and unmount the SD Card.
- Storage Device: Enable a MIPC Cloud Box for additional storage, then enter the device ID and password.
- Scene: Quickly select to turn alarm on or off.
- Accessory: Set the camera alarm when motion is detected in the covered area.
- Record : Schedule times when you want the camera to record.
- Date/Time: Set the date and time for the device.
- System: Set System options such as restoring to factory settings, restarting, etc.
- Others: Miscellaneous options such as flipping the camera view, adjusting the audio, etc.
- Delete: Delete the device

5.7 More (Account Settings)



The Settings page contains the following options:

- Software Version – View the current version of the software
- Account Admin Password – This enables you to change your account password.
- Account Guest Password – If you wish to allow someone access to your camera, you can assign them a user guest password, which can be disabled at any time. Guests can view what the cameras are broadcasting and can move the cameras, but they will not be able to make any changes in the settings or use the remote microphone.
- Connect Email – Enter an Email address. This is the email account to which notification is sent when you ask to reset your password.
- Export SD card data –Export the SD card data to your computer.
- Exit – Exit the current account.

Q&A:

Q: Do I have to subscribe cloud service to use the camera?

A: No! We never force customers to subscribe the cloud service. Just connect to the power then you can see the live stream on your phone.

Q: Does the camera need to connect the power supply?

A: Yes, it needs to be plugged into an outlet for continuous power. Wireless means that this Wi-Fi camera transmits data via 2.4 GHz WIFI. The Adapter and power cord are included in the package.

Q: Does the camera support other APP?

A: No. This CCTV camera currently only supports MIPC App.

Q: How long is the power cord?

A: It is 9.8 ft long, about 250cm.

Q: How do i mount on the wall?

A: First make sure the position of the screw holes, drill holes and put in the screw plugs, then fix the camera with screws.

Q: Does the camera support Micro SD card? If yes, which kind of SD card should I use?

A: Yes, this security camera supports up to 8-512G Micro SD card/Class 10/ Fat 32 format.

Micro SD card is not including in package. Its suggested that you buy the Micro Sd card from Sandisk, Sony, Kingston, Toshiba, Samsung.

Q: It prompts that the "WiFi password is an error" (the WiFi password cannot be identifying) what should I do?

A: (Note that the WiFi SSID you create must be no more than 32 characters and must not contain special characters Letters are distinguished between uppercase and lowercase) It is suggested that you resetting a new Wi-Fi password only consist of letter and number. You can press the reset button to restart and reconnect WiFi again.

