

User Guide

USB-EASY-TRAN

Before You Begin

1. Install Easy Computer Sync software on both computers. We recommend downloading the latest version of the software from our support site [here](#). Install this version instead of the one that came with the cable.
2. Give both computers a restart to ensure the software installation process has finalized
3. Connect the Transfer Cable, and start the software on both computers to initiate the connection
4. At this point, you can register the software with the included 16 character Product Key. There's a product key label attached to the cable:



If you purchased your Transfer Cable before 12/01/2017, you should have received an email containing the Product Key. Please reach out to us directly at: support@plugable.com with your Amazon order number for help with your Product Key, or if you have any questions.

Our **Product Keys**:

Use letters A-F only

Use the number zero 0, and not the letter O

Do not expire

Can be used to register as many computers as you need

5. Now, pick the transfer mode you want to use and begin transferring. We recommend using the **Transfer Data to New Computer** mode.

Getting Started on Windows


[We have a video on how to transfer data between two computer on YouTube](#) that covers all the transfer modes below.



Transfer data to New Computer

The **Transfer Data to New Computer** mode is one of the three main **Transfer Modes** available in **Easy Computer Sync**. This mode is designed for one-way transfers, and files should transfer between folders with the same name. For example, if we pick the **Pictures** folder on the first computer the files transfer to the **Pictures** folder on the second computer. Let's look at the steps:


1. Click the **Transfer Data to New Computer** button on the main menu after you've made the connection


 Easy Computer Sync


— □ ×


Select how you want to transfer data

You can start any of these tools from either computer

**Sync Files (Recommended)**
Sync folders between computers to make them the same

**Transfer Data to New Computer**
Transfer your files and settings from an old computer to a new computer

**Drag & Drop Files**


**Control Other Computer**




2. We can pick which computer we're transferring from, and which computer you're transferring to. Typically this mode is used to transfer from an older machine to a newer one, which is what we're doing here. So, we'll click **This is my old computer**

Is this your old or new computer?

The transfer will copy data from your old computer to your new computer

**This is my old computer**
This is the computer I want to transfer data FROM

**This is my new computer**
This is the computer I want to transfer data TO



3. In the **top-left** corner of the page we'll see the main folders where files are kept in Windows. We can click the boxes to pick folders. Please note, **clicking these boxes will select all content in the folder**. At this point we could:

- Click **Next**, to start transferring
- Click **Add Folder**, to look for specific folders to transfer

4. In this example, we're going to look for specific folders transfer, so let's click **Add Folder**

Select items to transfer

☒ Kevin

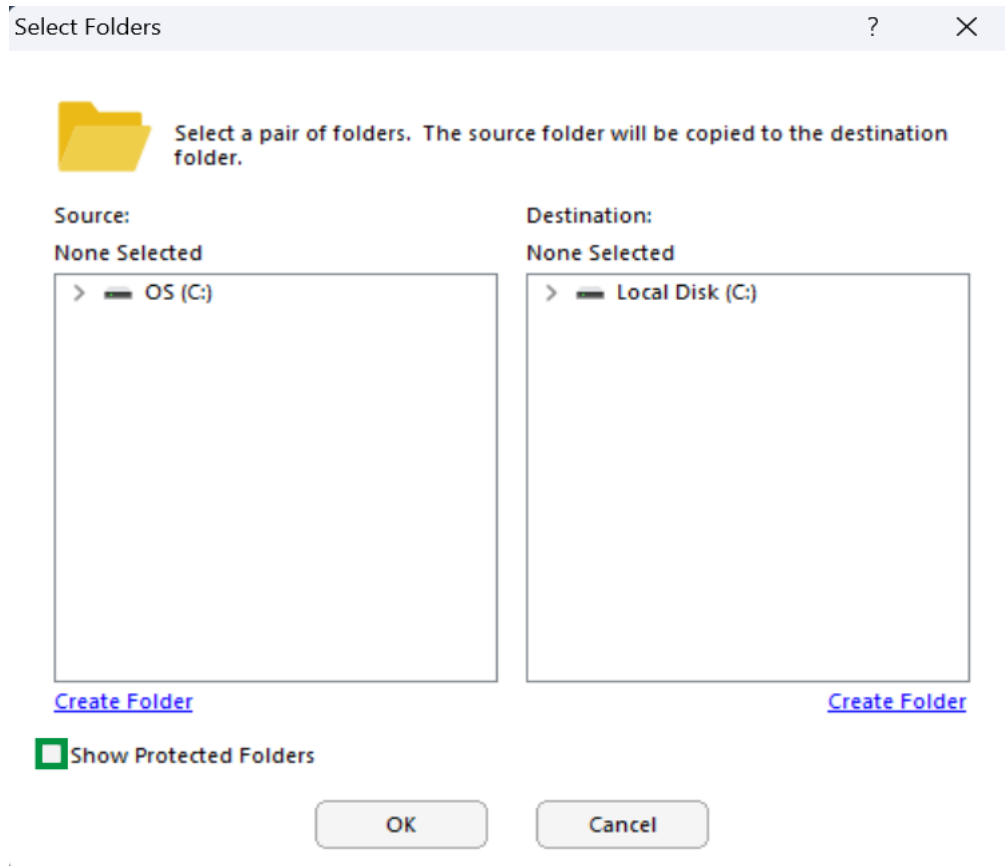
- ☒ My Documents
- ☒ My Pictures
- ☒ My Music
- ☒ My Videos
- ☒ Downloads
- ☒ My Desktop
- ☒ Favorites
- ☒ **Public Data**
- ☐ My Computer

[Use Defaults...](#)



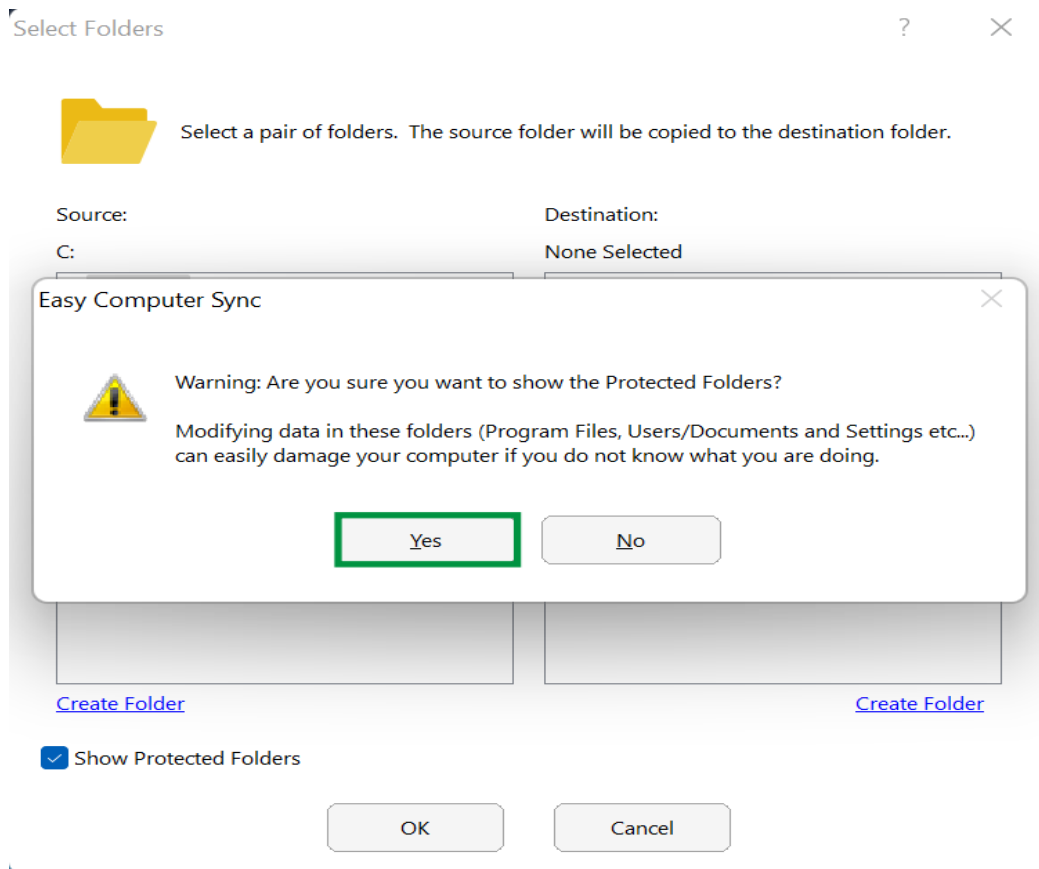
- Now, we see a screen with the first computer we're using on the left, and the second computer on the right. As a precaution, folders such as **Users**, **Program Files**, **Documents**, **Pictures** and more aren't available when the software is started. Click the box in the **bottom-left** of the screen that says Show **Protected Folders**, and we can get further access to files and folders



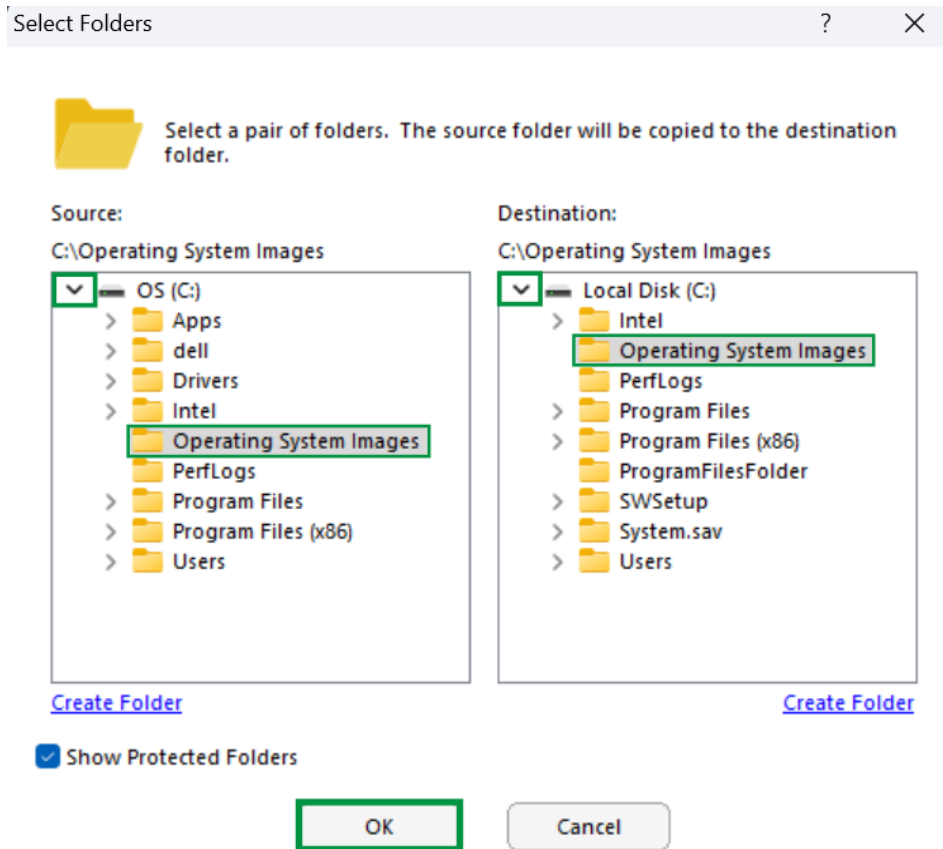


6. A message will pop up with information about viewing Protected Files. Click **Yes** to begin





7. We can click the arrows here that are next to drives and folders to expand them out, and see the content inside. Once we've found the folders needed, click **OK**



- Now, we have the folders we've selected ready, and can click **Next**, to start the transfer



Select items to transfer



[Use Defaults...](#)

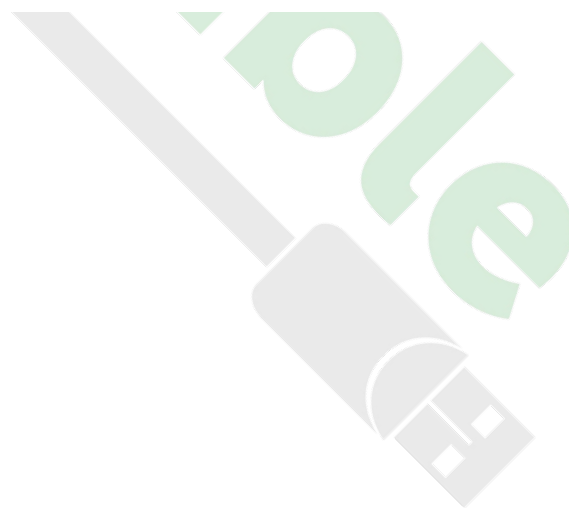
Add Folder

Properties

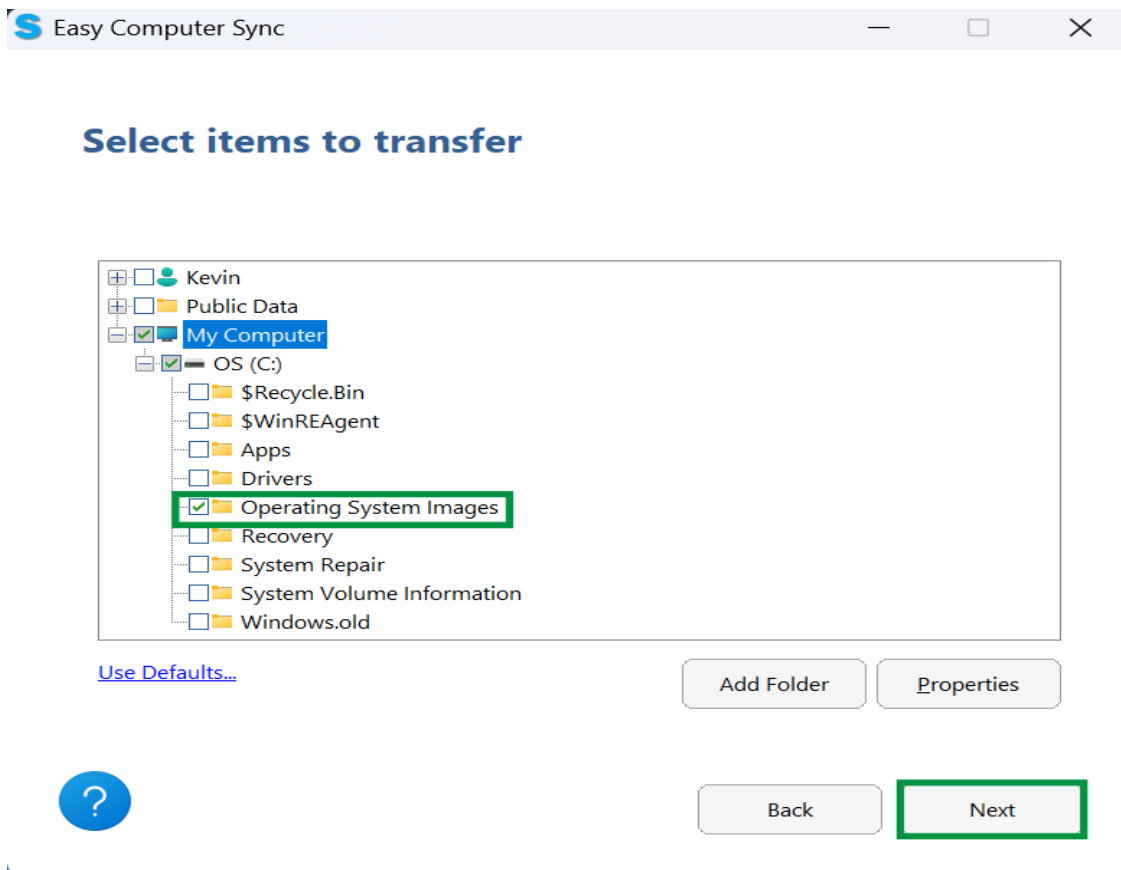


Back

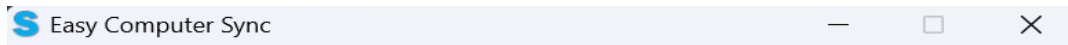
Next



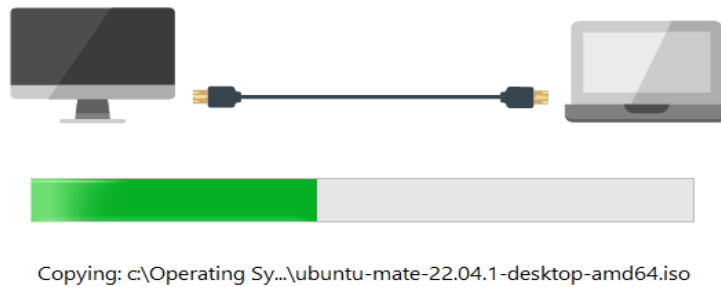
9. We see the folder ready for transfer. Click **Next** to begin



10. The progress bar will fill up green as files are transferred



Transferring Data...




11. Finished! Great. At the end we'll get information about the number of files sent, and the amount of data transferred. We can click **View Log**, to see a log with further information, and click **Exit**, when finished



Drag & Drop Mode

The **Drag & Drop** mode is one of the three main **Transfer Modes** available in **Easy Computer Sync**. This is great for accessing specific files and folders, and lets us manually drag and drop files and folders between our computers.

1. Click the **Drag & Drop** button on the main menu after you've made the connection

 Easy Computer Sync

— □ ×

Select how you want to transfer data

You can start any of these tools from either computer



Sync Files (Recommended)

Sync folders between computers to make them the same



Transfer Data to New Computer

Transfer your files and settings from an old computer to a new computer



Drag & Drop Files

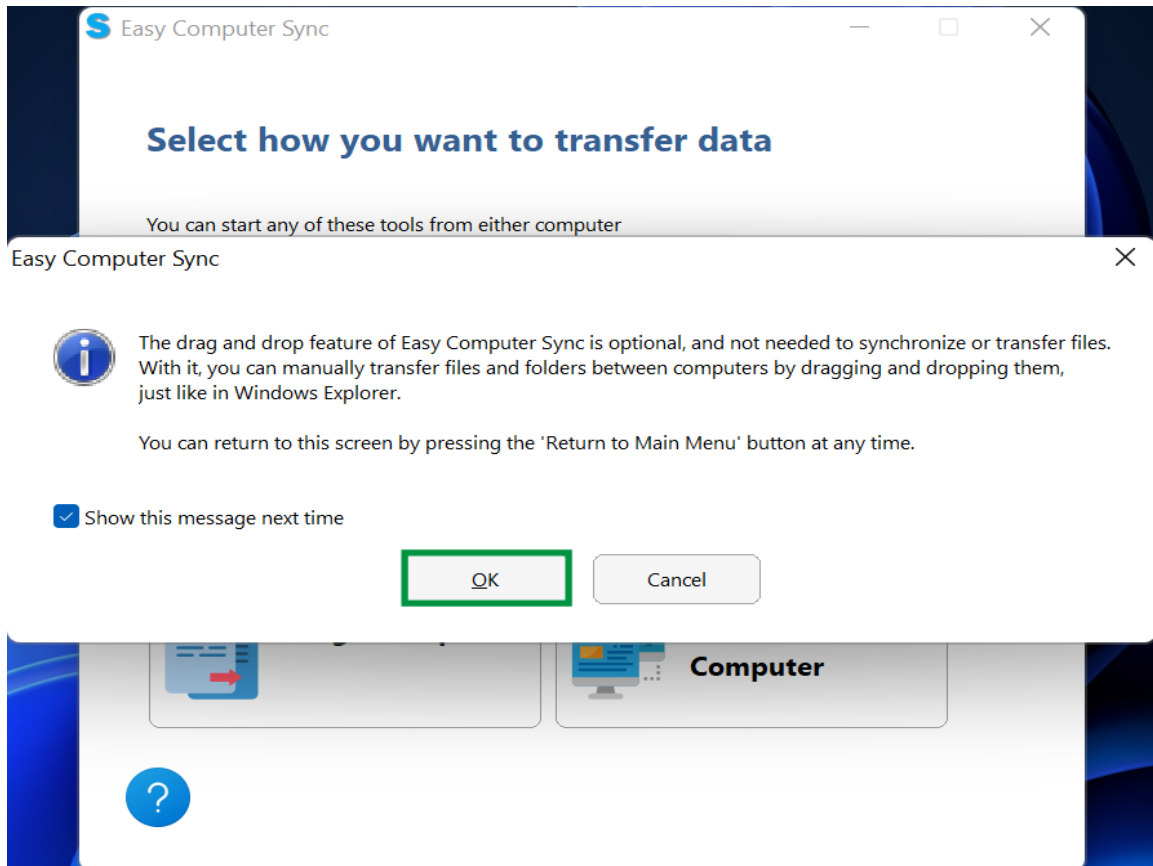


Control Other Computer

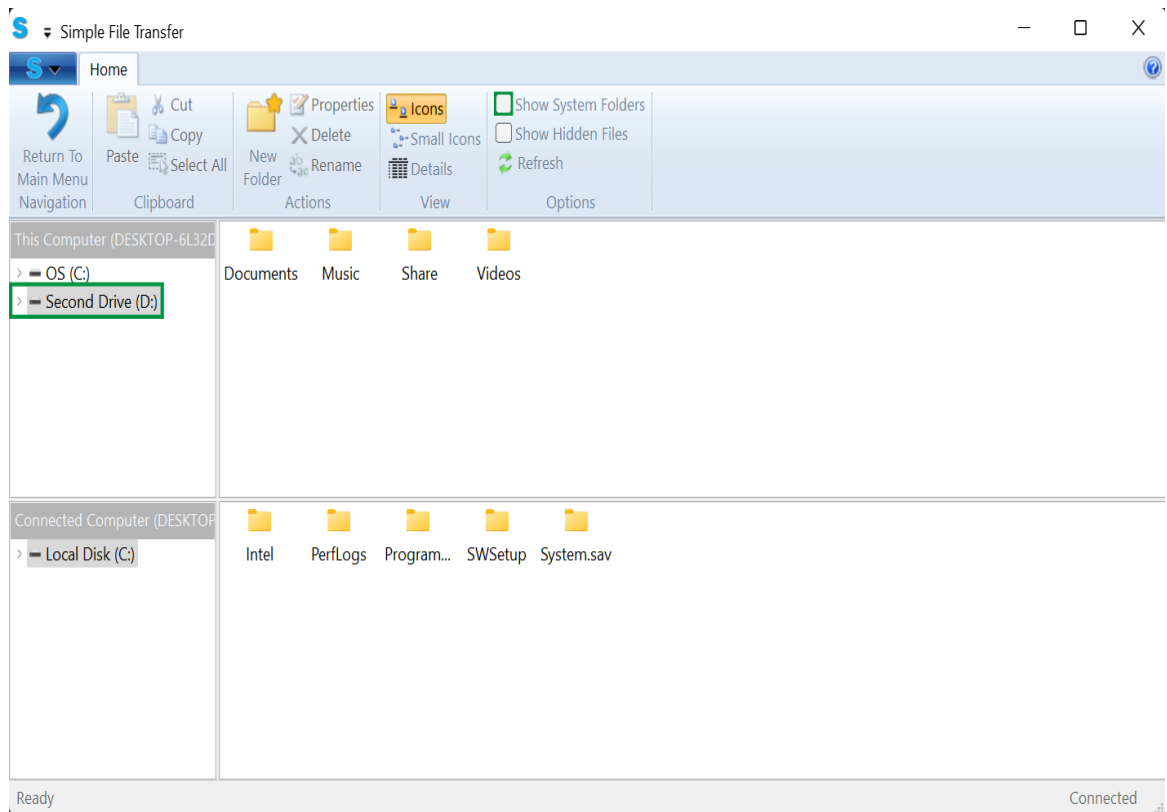


2. A screen will pop up with some further information about the Drag & Drop Mode. Click **OK** to begin



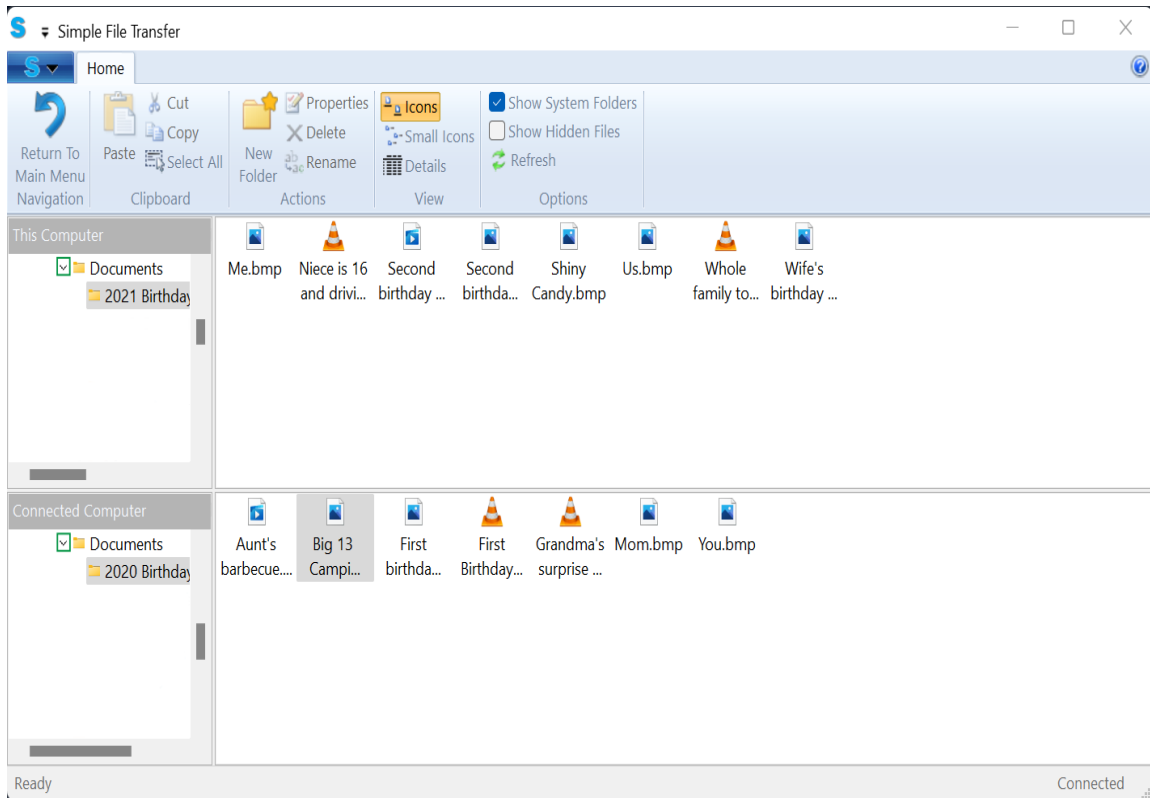


3. Now, we get to the main screen of the Drag & Drop mode. Here, we can see the computer we're currently using in the top of the screen and the connected computer below. We can also see any additional hard drives automatically, like this **Second Drive**. Some folders aren't accessible right away, and we may need to click the **Show System Folders** button to get access to certain items

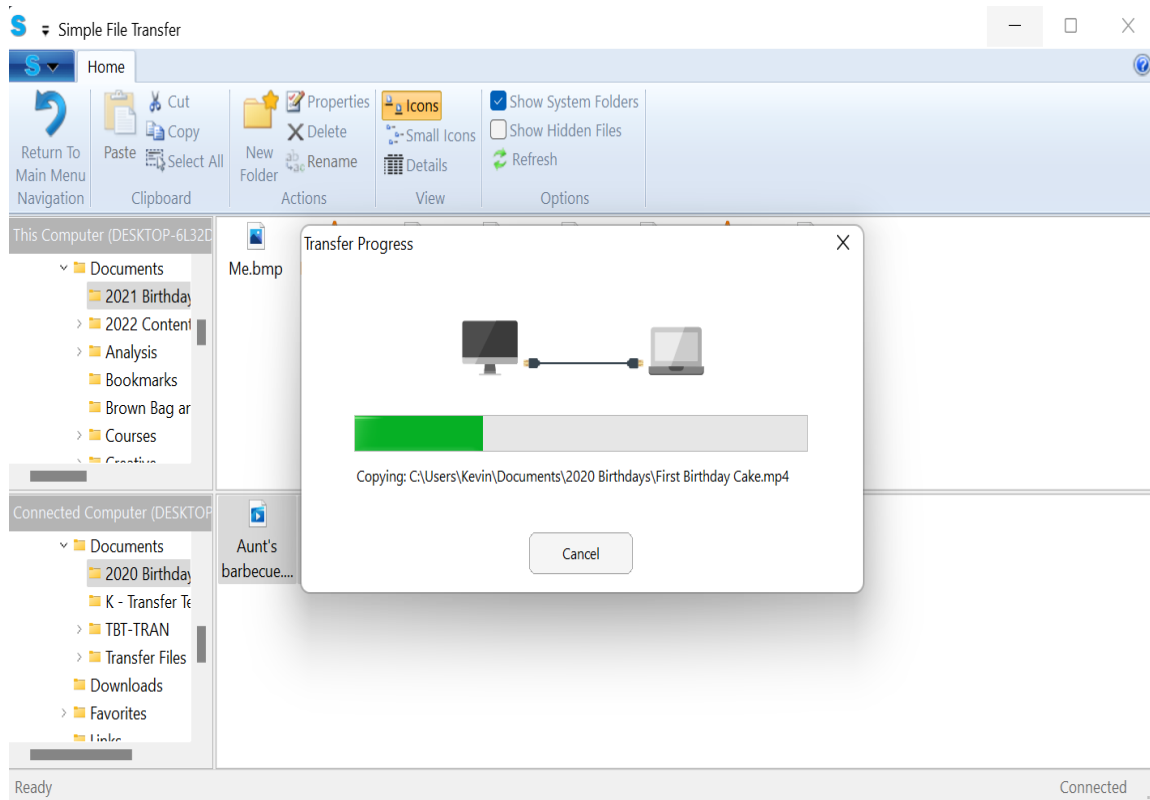


4. We can click the arrows that are next to drives and folders to expand them out, and see the content inside. Now, we can see into the folders and get the content we need. Simply click, and drag files between computers to drop them to start a transfer

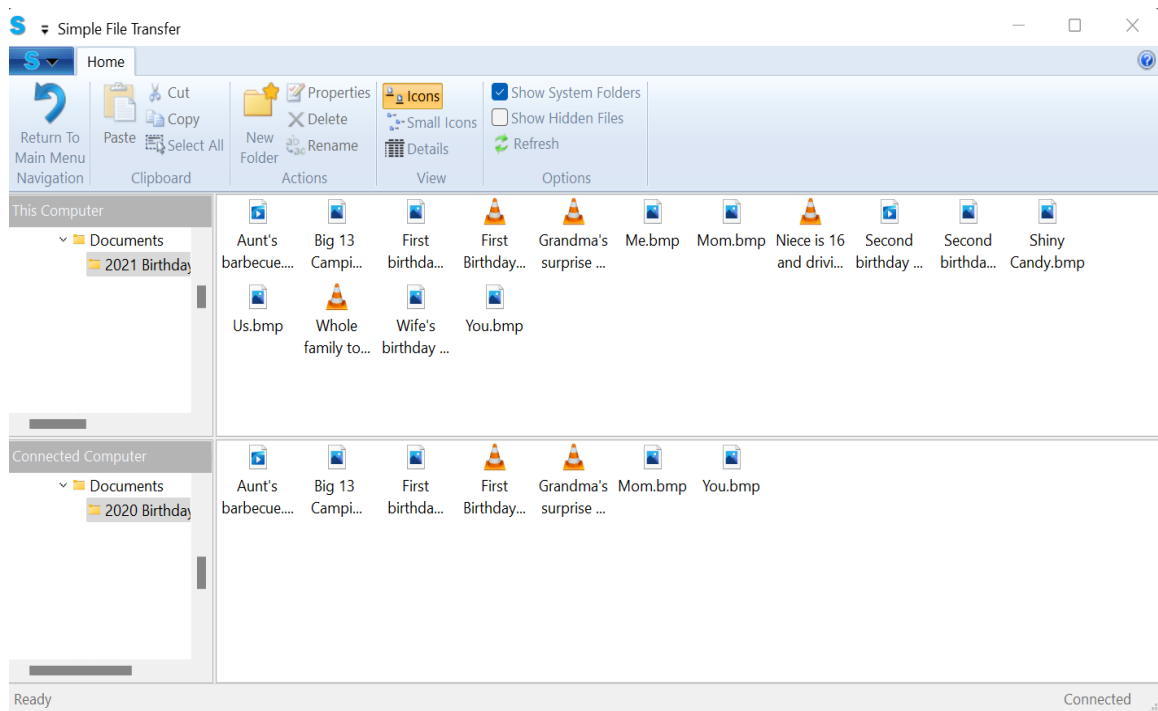




5. A green progress bar will fill up a files transfer



6. Great! Now we have all of the items on the top computer



What is the Sync Files Mode?


The **Sync Files** mode is one of the three main **Transfer Modes** available in **Easy Computer Sync**. Let's say we have photos from 2021 on the first computer, and photos from 2020 on the second computer. We want to sync the computers up, and get all of the photos on both computers. That's where the **Sync Files** mode comes into play, and here's what we need to do:


1. Click the **Sync Files Button** on the main menu after we've made the connection





Select how you want to transfer data

You can start any of these tools from either computer

**Sync Files (Recommended)**
Sync folders between computers to make them the same

**Transfer Data to New Computer**
Transfer your files and settings from an old computer to a new computer

**Drag & Drop Files**

**Control Other Computer**



2. In the top-left corner of the page we'll see the main folders where files are kept in Windows. We can click the boxes to pick folders. Please note, **clicking these boxes will select all content in the folder**. At this point we could:

- Click **Next**, to start syncing
- Click **Add Folder**, to look for specific folders to sync up

- 3.

In this example, we're going to look for specific folders to sync up, so let's click

Select folders to synchronize

You can start the synchronization from either computer

☐ My Documents
☐ My Pictures
☐ My Music
☐ My Videos
☐ My Desktop
☐ Favorites

[Use Defaults...](#)

Add Folder

Options



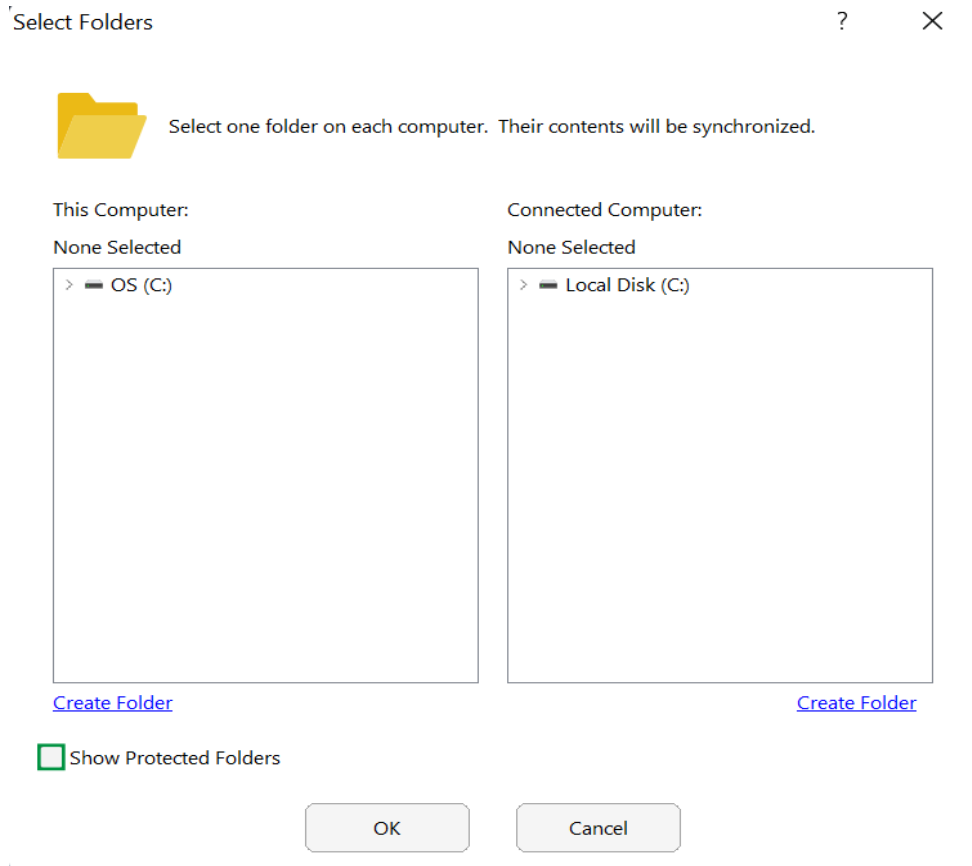
Back

Next

Add Folder

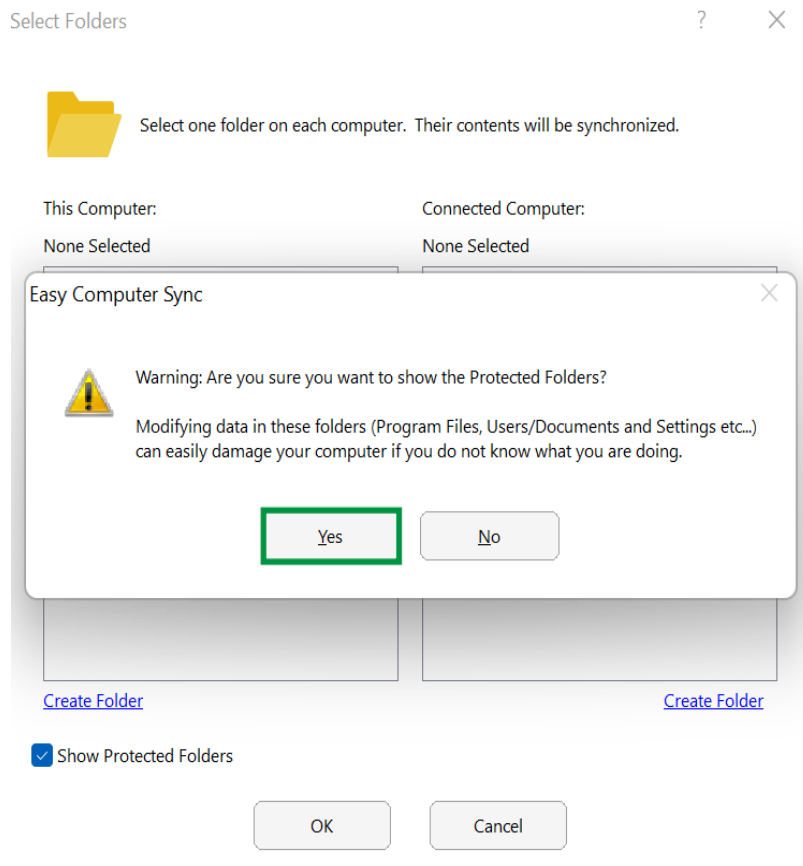
- Now, we see a screen with the first computer we're using on the left, and the second computer on the right. As a precaution, folders such as **Users**, **Program Files**, **Documents**, **Pictures** and more aren't available when the software is started. Click the box in the **bottom-left** of the screen that says **Show Protected Folders**, and we can get further access to files and folders



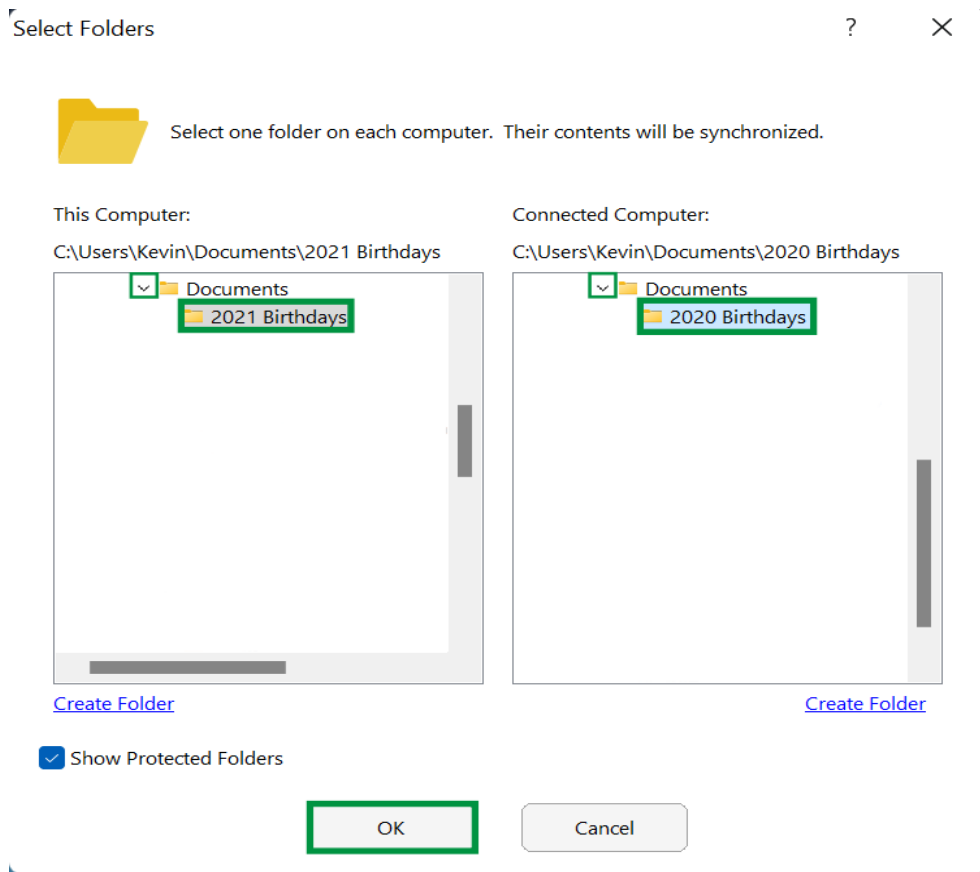


5. A screen will pop up with some information about accessing files. Click **Yes**, when ready to move on





6. We can click the arrows here that are next to drives and folders to expand them out, and see the content inside. Once we've found the folders needed, click **OK**



7. Now, we can see that the folders we've selected are ready to be synchronized. Click **Next**, to begin



Select folders to synchronize

You can start the synchronization from either computer

☐ My Documents

☐ My Pictures

☐ My Music

☐ My Videos

☐ My Desktop

☐ Favorites

☒ Folder 'C:\Users\Kevin\Documents\2021 Birthdays' (to 'C:\Users\Kevin\Documents\2020 B

[Use Defaults...](#)

Add Folder

Options




Back

Next



8. The Progress bar will fill up green as files are synced up

 Easy Computer Sync



Synchronizing Data...

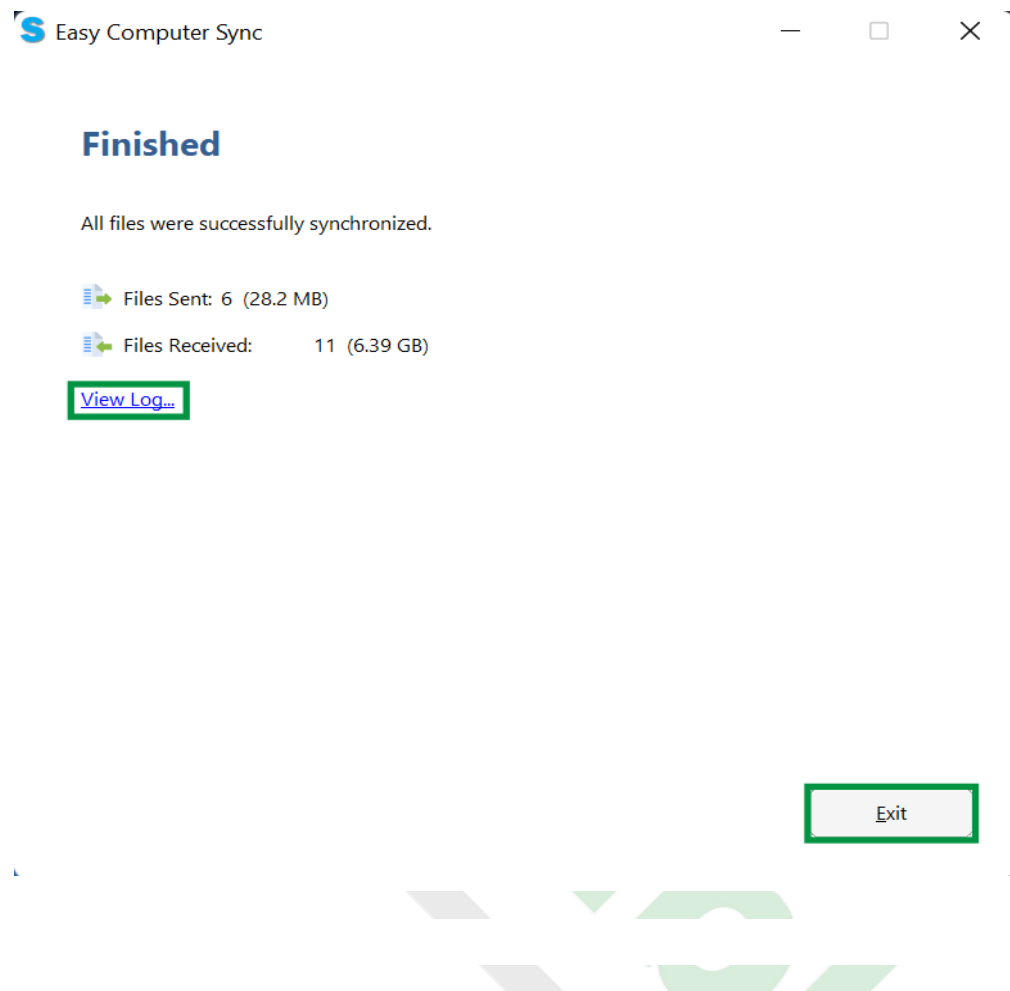


Receiving: C:\Users\Kevin\Documents\202...\First Birthday Cake.mp4

9. **Finished!** At the end, we can see the number of files sent and received and the amount of data transferred. We can click **View Log**, to see a log with further



information, and click **Exit**, when finished



Common Problems

I've installed the Bravura Easy Computer Sync software on both systems, and instead of starting the transfer process both systems say "Waiting for Connection" indefinitely. What's going on, and how can I get the connection to work?

We can help!

First, we'd suggest downloading and installing the latest version of Bravura Easy Computer Sync onto both computers. You can download the latest version of Easy Computer Sync directly from this link: [Download Easy Computer Sync](#) . This latest software version improves compatibility and stability and should take care of any connection issues.

I downloaded and installed the latest software from the link above, but I'm still having trouble. What do I do?

Downloading and installing the latest software from the link above should take care of any connection issues. But, if you're still having trouble after that, give these steps a try:

1. Give both computers a restart. This is a basic first step, but, it's always a good practice to restart your computer after installing software to allow the installation and changes to complete.
2. Try plugging the cable into different ports on both computers, and let's swap the cable ends around as well to see if that gets the connection to go through.
3. Try running the program as an administrator. You can do this by right-clicking the application, and choosing **Run as administrator**. The transfer program grants direct access to files, so Windows User Account Control may flag it, and keep it from running.
4. Finally, if these steps don't work, let's try temporarily disabling any antivirus/firewall/security software on both computers. The software can definitely be re-enabled again, and if the connection works properly, you may need to just add an exception for the Transfer Software to your security program.

We hope this was helpful! Feel free to reach out to us directly at support@plugable.com, if you still need help with the connection or have any questions and we'll be glad to help you!

Looking for more information? Additional information for getting started and product details are available on the Plugable product page:

<https://plugable.com/products/usb-easy-tran/#nav-get-started>

