

Disclaimer & Safety Guidelines

v1.0



Q111

1 Safety at a Glance

 The product is NOT suitable for people under the age of 8.

1.1 Glossary

- The following terms are used throughout the product literature to indicate various levels of potential harm when operating this product:



Recommend



Warning



Hints & Tips



Reference

1.2 Disclaimer and Warning

- The users should have the ability to operate and acquire some knowledge of safety, and need to operate the product carefully.
- Please use it after you are familiar with the functions of the product.
- This product is not recommended for people under the age of 8.
- Please read this Disclaimer and Warning and Safety Guidelines carefully before using our product.
- By using this product, you hereby agree to this disclaimer and signify that you have read it fully. You agree that you are responsible for your own conduct and any damaged caused while using this product, and its consequences.
- You agree to use this product only for purposes that are proper and in accordance with local regulations, terms and all applicable polices and guidelines Ruko may make available.
- When using this product, please be sure to strictly abide by the specification requirements and safety guidelines stated in this document.
- Any personal injury property damage, legal disputes and all other adverse events caused by the violation of the safety instructions or due to any other factor, WILL NOT be Ruko's responsibility.

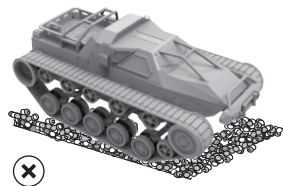
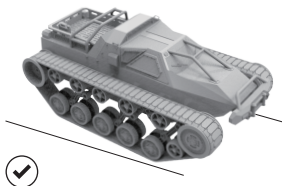
2 Use Guidelines

2.1 Guidelines Before Use

- To make you use this product better, Ruko provides users with the following documents: *Quick Start Guide*, *Disclaimer & Safety Guidelines* and *User Manual*. It is recommended that you read these instructions as above turns. Ensure that you are familiar with the functions of each component of this product, and understand the relevant safety guidelines, local laws and related policies before using this product. Please contact Ruko if you have any questions.
- Read the instructions carefully and follow all precautions. Or ask someone with operating experience, and read it with the guardian if necessary. Incorrect use of the battery may cause accidents.
- You can use tools to remove it when you install or remove the battery cover of the RC truck. Please be careful to avoid scratches.
- Ensure that the battery cover screws are tightened correctly to prevent the battery from falling.
- Ensure that the batteries of RC truck and trigger are full before use, in case that the truck is out of control.
- Ensure that the throttle trigger is in the middle position.
- It is normal for the battery to heat after working. Please handle the battery carefully. If the wire is frayed, it is easy to short-circuit and cause a fire.
- Please stop immediately and check the cause when the RC truck runs abnormally.
- Only add clean tap water or pure water to the water tank. It is strictly forbidden to add other liquids or particles to the water tank, otherwise the spray function will fail.

2.2 Battery Safety and Maintenance Precautions

- Please use this product on a flat ground and an open area (>13x13ft) without pedestrians. Do not play in high places, uneven areas, sand, sinks, etc.



- DO NOT operate in public streets or crowded places to avoid accidents.
- DO NOT put your fingers or any objects in the rotating and moving parts.
- The track of the RC truck will expand and contract with heat. Do not play for a long time on a high temperature ground, in case that the track falls off.
- When playing on rough ground, please do not rotate it 360 degrees on the spot, in case that the track falls off due to too much friction.

2.3 Guidelines after Use

- Turn off the power of the RC truck first, then turn off the trigger, and finally remove the battery.
- The RC truck needs daily maintenance after use. For example, clean up foreign objects (such as mud, sand, etc.) after use.
- It is normal that the bottom of the RC truck body will heat because the motor will emit heat after the truck is used. Do not touch it in case of scald.
- Please replace it if the truck track is worn too much after playing for a long time.

3 Original Accessories



To avoid possible injury and loss, please observe the following items:

- Please use the original batteries. It might cause accidents if you use batteries that are not officially provided by Ruko.
- Ensure that there is no any objects (such as sand, mud, etc.) inside the truck and its components.
- Ensure that the truck and its components (such as trigger, chassis, smart battery, etc.) are all working properly.
- DO NOT disassemble all the parts that have been installed before leaving the factory by yourself, otherwise it may affect the performance of the RC truck or even cause an accident.
- Connect and disassemble the cable according to the instructions to prevent damage.

4 Intelligent Battery



To avoid fire, property damage and personal injury, please observe the following safety guidelines during battery use, charging and storage.

4.1 Battery Safety and Maintenance Precautions

- It is strictly forbidden to use the battery to contact any liquid, DO NOT immerse the battery in water or wet it, DO NOT use the battery in rain or damp environment, the battery may decompose after contact with water, which may cause spontaneous combustion of the battery, even cause an explosion.
- If the product falls into the water accidentally, please remove the battery immediately and place it in a safe open area or a special explosion-proof box (be careful to keep away from flammable materials), stay away from the battery until the battery is completely dry, and DO NOT use it again.
- If the battery catches fire, please use solid fire extinguishing equipment such as sand or dry powder fire extinguisher to extinguish the fire.
- It is strictly forbidden to use leaking, damaged batteries, and to charge them, and do not use them when the smart battery emits peculiar smell, heat, deformation, discoloration, or any other abnormal phenomena.
- Please use the battery in an environment with a temperature of 10°C to 40°C. Excessive temperature will cause the battery to accumulate fire or even explode. Too low temperature will seriously damage the battery.
- It is strictly forbidden to use batteries that are not officially provided by Ruko. If you need to replace a new battery, please purchase it on Ruko's official website or designated channels. Ruko is not responsible for battery accidents and equipment failures caused by the use of batteries that are not officially provided by Ruko.
- It is forbidden to disassemble or pierce the battery with sharp objects in any way, otherwise, battery leakage will cause fire or even explosion.

- It is forbidden to mechanically hit, crush or throw the battery, and do not place heavy objects on the battery or charging equipment. If the battery is dropped or hit by external force, it must not be used again.
- The electrolyte inside the battery is highly corrosive. If you accidentally contact your skin or eyes, please rinse with clean water for at least 15 minutes and seek medical attention immediately.
- DO NOT heat the battery.
- DO NOT put the battery in pockets, backpacks or drawers to prevent short circuits from contact with other objects. It is forbidden to use wires or other metal objects to short-circuit the positive and negative electrodes of the battery.
- If there is dirt on the battery interface, wipe it with a clean, dry cloth, otherwise it will cause poor battery contact, resulting in energy loss or charging failure.
- Different types of batteries or old and new batteries must not be mixed.
- DO NOT short circuit, disassemble or put the battery into fire.
- DO NOT put the battery in the remote control car when not in use.
- When installing or replacing the battery, please pay attention to the polarity of the battery.

4.2 Precautions for charging

- Please use the supplied special charger to charge the battery. It is recommended to use the original charging cable included in the product package for charging. It is not recommended to use a fast charge that exceeds the rated power of the product, a car charger, a computer USB port, or a USB port on the plug.



✓ Original charging cable



- DO NOT place the battery and charging equipment near flammable and combustible materials (such as carpets and wooden products) for charging. Please always pay attention to the charging process to prevent accidents.

- It is forbidden to charge battery for a long time. The normal charging time is about 3.5 hours and remember to remove it in time after fully charged.



✓ Charging Time≈3.5 hours



✗ Overcharge>3.5 hours

- It is forbidden to charge the battery immediately after use. Charging immediately may cause damage to the battery because the temperature of battery is too high after use.
- After charging, please disconnect the connection between the charging device and the battery. Check and maintain the charging device regularly. Check the appearance of the battery and other parts frequently. Do not use alcohol or other flammable cleaning charging devices. Do not use damaged Charging devices.
- Please charge the battery under the supervision of adults.

4.3 Disposal of Batteries Guidelines

- DO NOT put discarded batteries together with household waste. Batteries are dangerous chemicals, so it is strictly prohibited to dispose of them in ordinary trash cans. Please contact your local environmental or waste management agency, the supplier of your product or the nearest battery recycling center. Please follow the local laws and regulations on battery recycling and disposal.

5 Storage and Transportation of the Product

In order to avoid possible injury and loss, please observe the following items.

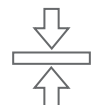
- Keep the product in a cool environment, avoid high temperature, exposure to the sun, water suction, pressing and descent from high altitude. Do not place the model in a high temperature, humid and direct sunlight environment.



✗ Liquid



✗ Sun Exposure



✗ Severely Squeezed

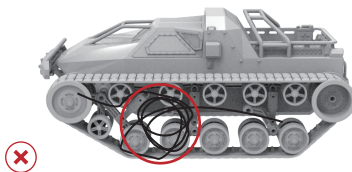
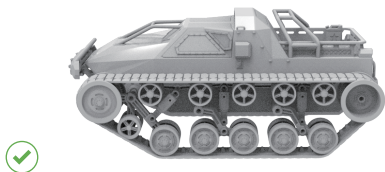


- Please store batteries, wires and small parts out of the reach of children and pets to avoid danger.

- It is forbidden to store or transport the battery with glasses, watches, jewelry, and other metal objects.
- Ensure to discharge the battery to less than 30% before taking the battery on the plane. Be sure to keep away from fire before discharging. Store the battery in a dry and ventilated place.
- DO NOT transport damaged batteries.

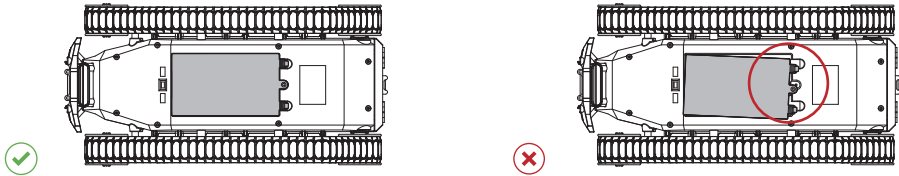
6. Maintenance of the Product

- DO NOT use the battery when the temperature is too high or too low.
Please take out the battery if you do not use the RC truck and trigger, because the battery will discharge and the power will slowly decrease.
 - The battery performance will be affected if it's not used for a long time.
Charge and discharge the battery once a month, store in a dry and cool environment. Do not store with full battery, keep 60-80% battery level. Overcharging may cause the battery to swell.
- After play, please pay attention to maintenance and cleaning, clean up the sand, entanglement, etc.



7 Problems you may encounter

- If the battery cover is not fasten, the battery will fall out.



- During operation, the wire is exposed and rubs against the ground and caused damage. Please put the wire in the shell of the car to avoid exposure.

7.1 The RC truck doesn't work anymore

- Charge the battery of the RC truck.
- Replace the battery of the RC truck.

7.2 The RC truck can't walk in a straight line

- Did not drive it on a level ground
- The direction is not adjusted.

7.3 The RC truck will not go back directly when it is going forward

- When the RC truck is moving forward, press the trigger once for the brake function, and press it for the second time for the backward function. This is a normal phenomenon.

CONTACT US FOR MORE TECH SUPPORT

✉ rukotoys@gmail.com

☎ +1 (949) 394 - 4635 (Available from 6pm to 3am PDT)

Printed in China.

Ruko[®]

rukotoy.com