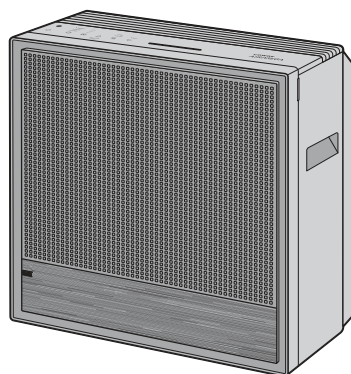


coway AIRMEGA USER MANUAL

Air Purifier Airmega 250/250S



coway

Symbols Used in This Manual

The following symbols are used in this manual to explain procedures, restrictions, handling precautions, and instructions that should be observed for safety.

WARNING

Warning indicates a potentially hazardous situation that may result in death or severe injury to the user or others.

CAUTION

Caution indicates a potentially hazardous situation that may result in injury to the user or others, or the loss of property.

NOTE

Note indicates useful tips or additional information for procedures and product use.

This square bracket represents control buttons and indicators on the product.
e.g., [Power]

Safety Instructions

Read and follow all the safety tips and warnings before using the product.

WARNING

- Do not exceed the voltage and power rating of the power outlet or connection device. This may generate excessive heat and cause electric shock or fire.
- Only use the appropriate type of electric socket for the product. Connecting the product to an incorrect socket may result in damage.
- Do not immerse the product or any of its parts in water. Operate the product only after a qualified technical examines and replaces the parts that were under water.
- Do not touch the power plug with wet hands.
- If the electric outlet is wet, do not connect the power plug of the product. Wait till the electric outlet dries completely before use.
- Do not operate the product if the motor fan fails to operate or is damaged.
- Disconnect the power plug from the electric outlet if strange sounds, smells, or smoke come from the product. Contact the customer service center immediately for instructions.
- Disconnect the power plug from the electric outlet when the product is not in use and before cleaning, inspecting, or replacing parts.
- Use a dedicated electric outlet for the product. Do not connect the product to a power strip that has connections to several other products.
- Do not operate the product if the power plug or cords are damaged.
- Do not forcibly bend, twist, pinch, or damage the power cord.
- Do not force the power plug into an incorrect electric outlet or into a loose electric outlet. Contact a qualified technician to install a proper electric outlet.
- A damaged power plug or cord must be replaced by the manufacturer or a qualified technician
- Remove the power plug from the electric outlet by grasping the power plug and pulling it gently. Never pull the cord to remove the power plug.

**READ AND SAVE THESE
INSTRUCTIONS**

Safety Instructions

Read and follow all the safety tips and warnings before using the product.

WARNING

- Keep the electric cord away from heat sources.
 - Do not repair the product unless this manual recommends it. Doing so will void your warranty. All repair work must be carried out by a qualified technician.
 - This product has a polarized plug (one blade is wider than the other). To reduce the risk of electric shock, this plug is intended to fit in a polarized outlet only one way. If the plug does not fit fully in the outlet, reverse the plug. If it still does not fit, contact a qualified electrician. Do not attempt to defeat this safety feature.
 - Do not use this product in industrial areas or factories where oil, grease, or dust particles may be present. This product is for household use only.
 - Do not change the filter while the product is operating.
- Always turn off the product and unplug the power plug before accessing the components inside the product.
- Do not place the product near a humidifier or in humid areas, such as bathrooms or laundry rooms, where the product may come into contact with water.
 - Do not place the product near flammable gases, cigarettes, incense, and other combustible materials.
 - Do not place the product on a bed or against soft objects, such as curtains.
 - Do not clean the product using detergents, paint thinner, or other household solvents.
 - Do not spray insecticides or other flammable materials near the product.

CAUTION

- This product should not be used by children under 8 without supervision.
 - This product should not be used by persons with reduced physical, sensory, or mental capabilities or lack of experience without supervision or instruction concerning to the use of the product in a safe way and understand the hazards involved.
 - Do not allow children to play with the plastic wrapping and product.
 - Do not use this product with any solid-state speed control device, as it may result in electric shock or fire.
 - Do not use an adapter or extension cord, as it may cause fire, shock, or personal injury.
 - Do not use attachments or filters not recommended by the manufacturer.
 - Exercise caution while removing the components from the product. Ensure that your body parts do not get stuck or scratched while servicing the product.
 - Do not insert any objects or finger into the openings of the product. If any objects fall into the openings, immediately turn off the product and unplug the power plug. Contact a qualified technician or the manufacturer to remove the object.
 - Do not wash or reuse the Max2 filter.
 - Do not block the air outlet of the product. Doing so may decrease the efficiency of the product and increase the risk of injury.
- This product is for household use as described in this manual. Using it in an industrial environment or any other place not recommended by the manufacturer and may result in electric shock, fire, and injury to person.
 - Do not place anything on top of the product.
 - Do not run the power cord under carpets or cover it with rugs.
 - Change the filters at the recommended intervals so that excess dust does not accumulate.
 - Do not place the product where the both sides of product are blocked.
 - Do not place the product in direct sunlight.
 - Do not place the product next to or on windows.
 - Place the product on a firm, flat, and dry surface that provides sufficient air circulation.
 - Keep the product and its cord out of way, where it cannot be stepped on or tripped over.
 - The end user has to be informed to keep at least 20 cm separation with the antenna while this end product is installed and operated.
 - Operation is subject to the following two conditions:
(1) this device may not cause harmful interference and
(2) this device must accept any interference received, including interference that may cause undesired operation.

**READ AND SAVE THESE
INSTRUCTIONS**

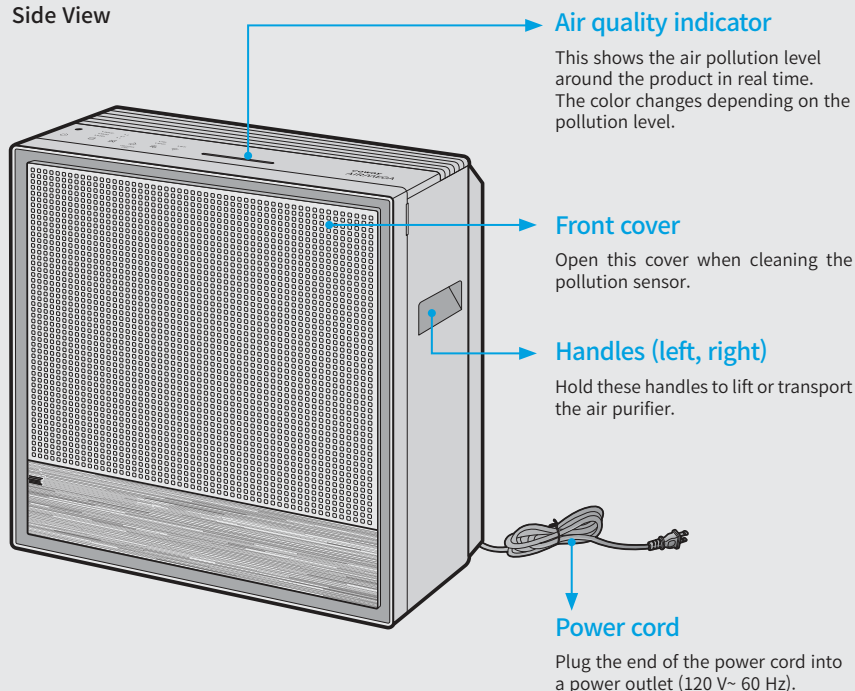
Parts Diagram

Check the parts of the product (exterior in the front and top view and control panel) and how they function.

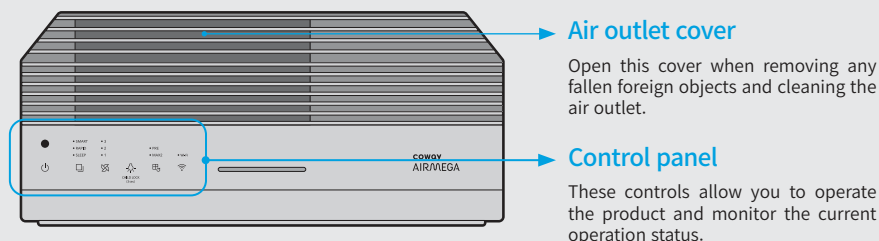
Exterior

Check the parts and functions of the exterior of the product.

Side View



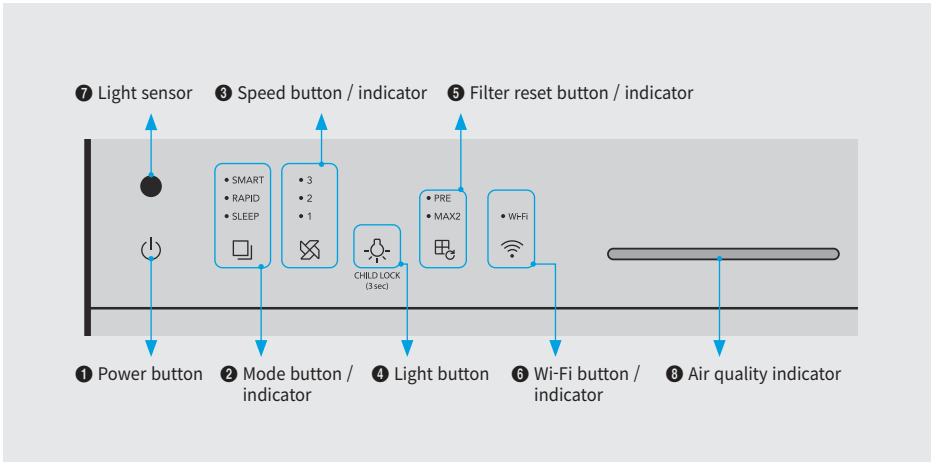
Top View



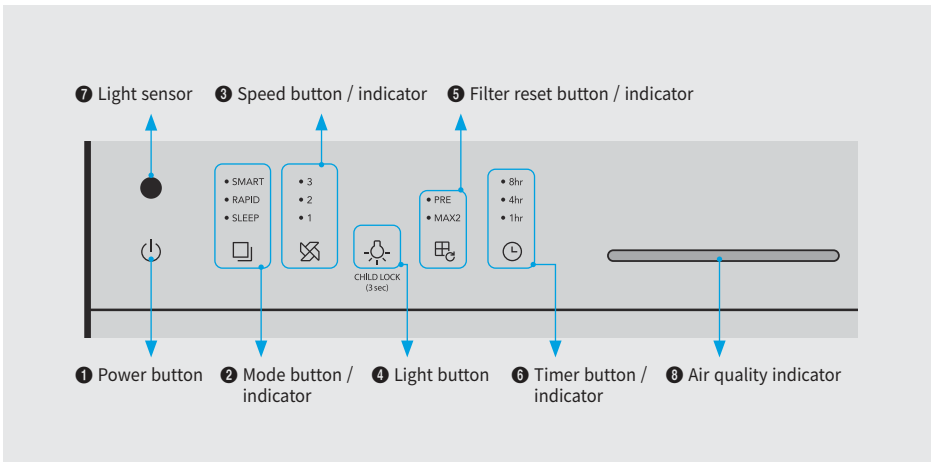
Parts Diagram

Check the parts of the product (exterior in the front and top view and control panel) and how they function.

Control Panel (250S)



Control Panel (250)



button/indicator

1 Power button

Use the button to turn the product on and off.

- When the product operates for the first time, it is operated in the smart mode. If you turn off the product during operation and turn it on again, it is operated in the mode active before the product was turned off.



2 Mode button / indicator

Press the mode button to select the smart mode → rapid mode → sleep mode.

- SMART
- RAPID
- SLEEP



3 Speed button / indicator

Press the speed button to select the level 1 → level 2 → level 3. The indicator is turned on when the speed level 1/level 2/level 3 is selected.

- 3
- 2
- 1



4 Light button

Use this button to turn on and off the indicator and air quality indicator. If you press the [Light] button while all indicators and the air quality indicator are turned on, you can turn on and off the indicators in the following order: Air quality indicator off → all indicators off → all indicators on.



CHILD LOCK
(3 sec)

5 Filter reset button / indicator

When the filter replacement indicator is turned on, press the corresponding button for more than 3 seconds after cleaning and replacing the filter. The indicator stays on during the filter cleaning/replacement cycle. When the cleaning cycle or life becomes less than 2%, the corresponding indicator will emit an orange color light.

- If both indicators(PRE and MAX2) turn on at the same time, the filters can be reset at once.
- If the filter replacement indicator is not turned on, the related button functions do not operate.
- If you have replaced or repaired the filter before the filter replacement indicator was turned on, refer to page 18.
- The cleaning and replacement cycle of the pre-filter and combined filter is recommended and may vary depending on the use environment.

- PRE
- MAX2



6 Wi-Fi button / indicator (Only 250S)

Touch the Wi-Fi button to connect to a Wi-Fi network. When connected to Wi-Fi, the status indicator's light will turn on.

- Wi-Fi



6 Timer button / indicator (Only 250)

Press the timer button to set the timer.

- 8hr
- 4hr
- 1hr



7 Light sensor

This sensor detects light around the product.



8 Air quality indicator

This indicator displays the indoor air quality in LED colors.
Good (blue) → Moderate (green) → Unhealthy (yellow) → Very unhealthy (Red)

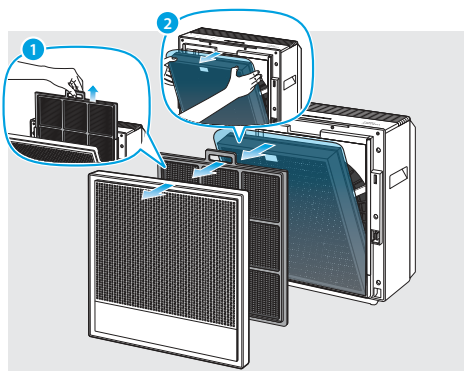


Setting Up the Product

Before using the product, you must remove the plastic wrapping of the inserted Max2 filter.

⚠ CAUTION

Make sure that the power cord is unplugged before opening the covers.



1 Open the cover located at the front of the product.

Cover ► Pre-filter ► Max2 filter

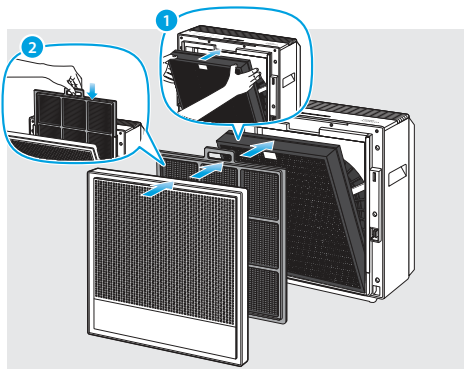


2 Remove the plastic wrapping for Max2 filter.

Discard the plastic wrapping for Max2 filter.

⚠ CAUTION

- When removing the plastic wrapping from the filter, be careful not to damage the surface of filter.
- Do not allow children to play with the plastic wrapping.



3 Return the filter and cover in reverse order at the first step.

Max2 filter ► Pre-filter ► Cover

📌 NOTE

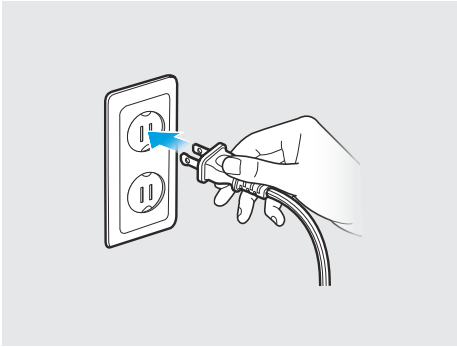
- Place the Max2 filter into the filter case with the green side facing the product. Reversed placement may affect the filter lifetime.
- The product will not turn on if the cover is installed in correctly.

Connecting the Power and Turning On the Air Purifier

When your filters are prepared, connect the power and turn on the air purifier.

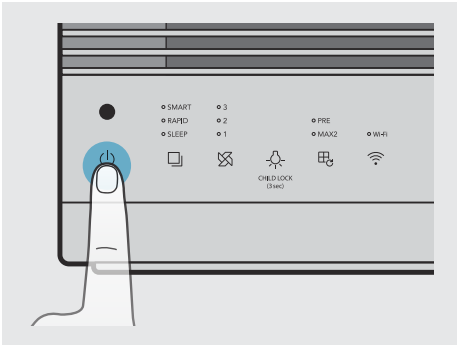
⚠ CAUTION

This product is for 120 V~ 60 Hz use only. Make sure your power supply meets these requirements.



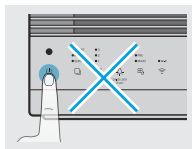
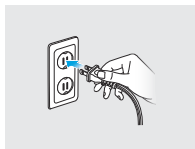
1 Insert the power plug into a power outlet.

The indicators on the air purifier will blink.



2 Touch the [Power] button to turn the air purifier on.

You will hear a chime sound when the air purifier starts to operate.



⚠ CAUTION

- Do not touch the control panel while connecting the power.
- Buttons may not work for a certain period of time.
- If the buttons do not work, unplug the power cord for about 10 minutes to discharge, and then connect it again.

Connecting the Air Purifier to the Wi-Fi Network (250S Only)

Find out the application pairing guide with the link provided below :

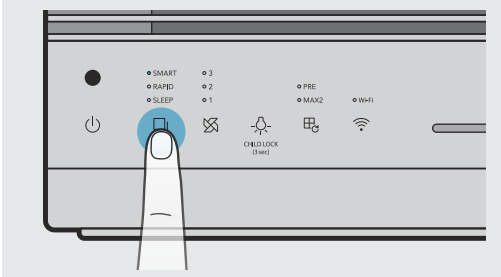
<https://iocare.coway.com/manual/us/air/airmega250s.html>

Smart Mode - Auto

If the product is set to Smart mode, it automatically adjusts the air speed according to the current air quality around the product. The air speed is adjusted as shown in the table below:

Air Quality	Good	Moderate/unhealthy	Very unhealthy
Air Speed	Level 1	Level 2	Level 3

250S/250



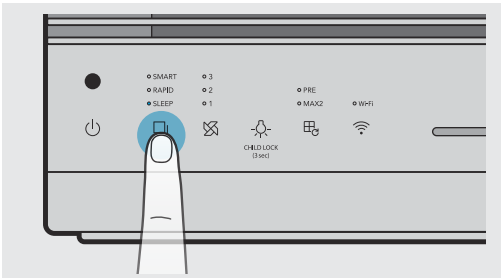
Press the [Mode] button to select the smart mode.

Smart Mode - Sleep

If the product is set to Smart mode, Sleep mode is activated automatically, so that it can reduce noise and power consumption. It activates when the room is dark and the air quality is Good(Level 1) for 3 minutes.

If the light sensor detects light for 5 minutes or longer and/or if the air quality level in the room is Moderate(Level 2) or worse. The Smart mode will activate automatically.

250S/250



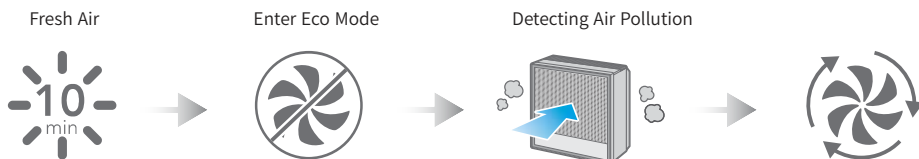
Press the [Mode] button to select the sleep mode. This mode minimizes the speed during operation for a quiet and pleasant environment.

Smart Mode - ECO

When set to Smart Mode, if the pollution level remains **Good**(Level 1) for more than 10 minutes, the fan stops automatically to conserve energy. If the product detects air pollution, the fan will automatically restart again.

If the pollution level remains Good(Level 1) for more than 10 minutes in smart mode, the fan stops automatically to save energy.

If the product detects air pollution, the fan will automatically restart. Also, if the ECO mode maintains for 30 minutes, the fan will restart as well. If the pollution level remains Good for more than 10 minutes after restarting, the ECO mode will be activated again.

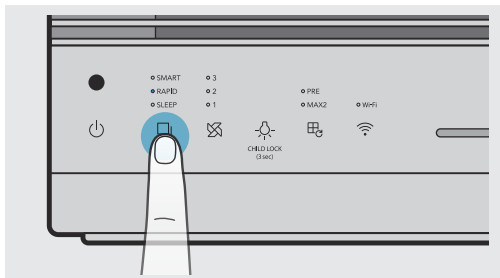


Rapid Mode

Press the [Mode] button to select rapid mode. When the air quality is maintained at level 1 for more than 5 minutes, it is switched to the smart mode. When the product continues to operate for more than a maximum of 60 minutes, it is switched to the smart mode.

- The maximum fan speed in the rapid mode is the same as level 3.

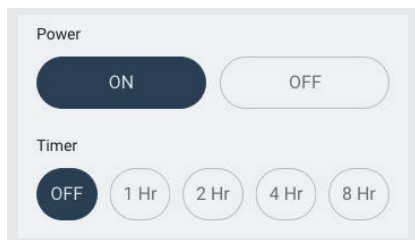
250S/250



Setting the Timer

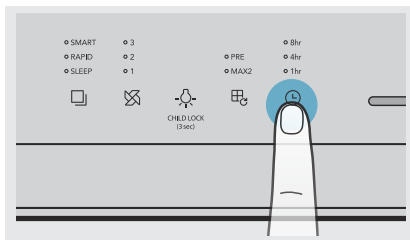
You can set the product to automatically turn off after an hour, 4 hours, or 8 hours. Use this feature to save energy when you leave home or go to bed.

250S



For 250S users, you can set the timer and scheduler using Airmega application.

250



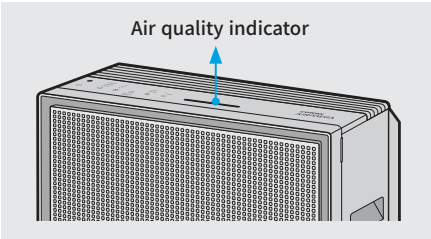
Touch the [Timer] button until the indicator light displays the desired time.

Checking the Air Quality

You can easily check the current air quality around the product using the air quality indicator on the front of the product.

NOTE

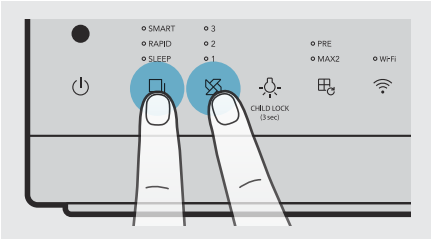
For 250S/250 users, you can also check the current air quality in the smart phone application.



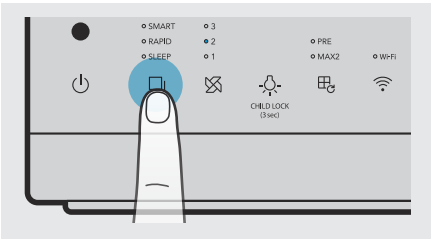
Air quality indicator
This indicator displays the indoor air quality in LED colors.
Good (blue) → Moderate (green) → Unhealthy (yellow) → Very unhealthy (Red)

Adjusting the Sensor Sensitivity

You can adjust the pollution sensor's sensitivity.

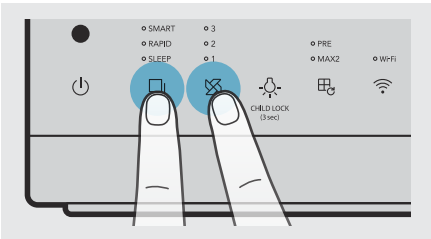


- 1 While the product is operating, press the [Mode] button and the [Speed] button at the same time for more than 2 seconds.
The speed indicator blinks to display the current sensor sensitivity level.
· Initial sensor sensitivity is at the normal level.



- 2 Press the [Mode] button to adjust it to the desired sensitivity. The mode indicator blinks as shown below once sensor sensitivity has been selected.

	1	2	3
Sensitivity	Sensitive	Normal	Less sensitive

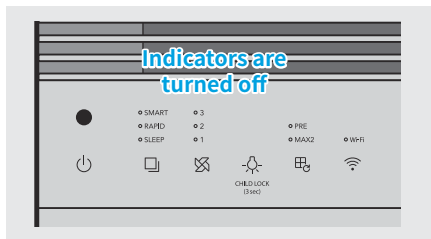
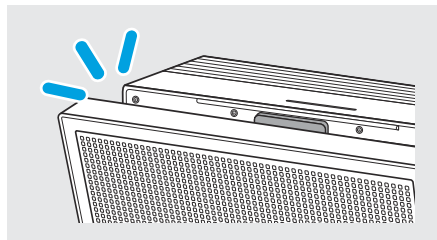


- 3 Press the [Mode] button and the [Speed] button at the same time for more than about 2 seconds, the selected sensitivity will be inputted and the product will start operating normally.
· If the [Speed] button are not pressed for 10 seconds, the selected sensitivity of the sensor is automatically entered.

Cover Open Notification Display

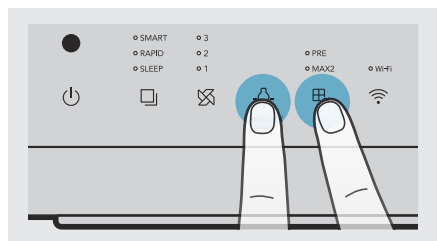
When opening the cover while using the product

When the front cover is detected open for more than 2 seconds, all indicators will turn off and the product stops all operation. When the front cover is detected closed for more than 1 second, the product returns to the previous operation mode.

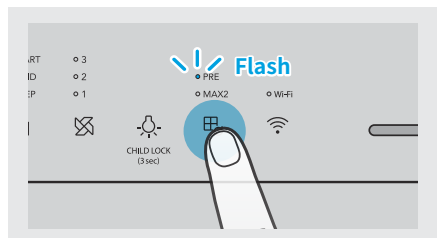


Reset The User-Selected Filter Replacement Cycle

This instruction is a guide for the next filter replacement maintenance. The filter replacement and cleaning cycle selected by the user when the user replaces or cleans a filter by themselves before the filter replacement notification is displayed.



- 1 Press the [Filter reset] button and [Light] button at the same time for more than 2 seconds.



- 2 The pre-filter indicator will start blinking. Then press the [Filter reset] button to select the filter that needs to be replaced or cleaned. Also, if you press the [Filter reset] button for more than 2 seconds, the selected filter option will reset.

- A filter is selected in the following order.
Pre-filter → max2 filter → pre-filter & max2 filter → pre-filter
- If you do not reset the filter and press the [Light] button and the [Filter reset] button again at the same time for about more than 2 seconds, or if you do not press the [Mode] button or the [Filter reset] button for 10 seconds, the filter is automatically canceled.

NOTE

- If you replaced or managed the filter before a filter replacement alarm is displayed, reset the filter replacement cycle using the user-selected filter replacement cycle reset function.
- Adjusting the sensitivity of air quality sensor and resetting the user-selected filter replacement cycle have the same entering and canceling method.