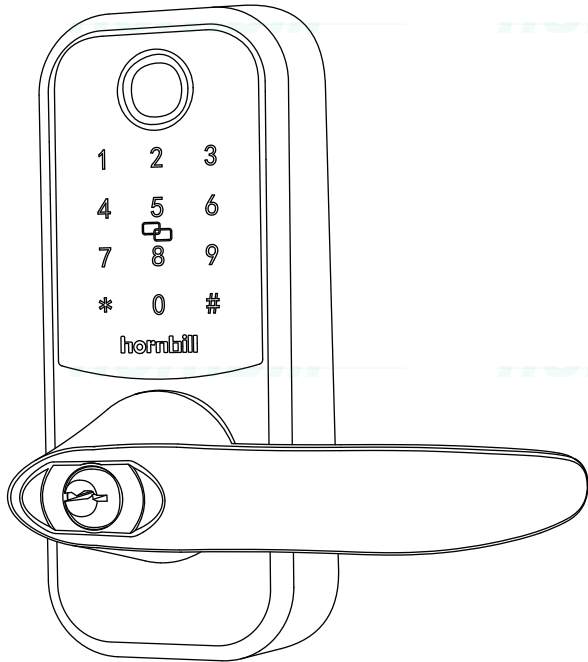


hornbill



USER MANUAL

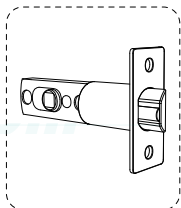
SMART LOCK

HBUS-ZNS-H001-BLK-KIT
G1.20210427

CONTENTS

1. What's Included	01
2. Product Overview	02
3. Specifications	03
4. Getting Started	03
Download TTLock App	03
Prepare Door for Installation	04
5. Installing the Smart Lock	05
6. Setting Up the Smart Lock	10
Pair Your Phone with Smart Lock	10
Set Access Passcode	12
Send Ekey/Authorized Admin	13
Change/Delete Passcodes	13
Turn on Auto-Lock Feature	14
Register/Delete the Fingerprint	14
Register/Delete the IC Card	16
7. Basic Operations	17
Unlock the Door	17
Lock the Door	17
8. Remote Control, Alexa/Google Home	18
How to Pair with Your TTLock App	18
How to Remotely Unlock or Lock the Door	19
How to Use Alexa to Control the Door	19
How to Use Google Home to Control the Door	21
9. Troubleshooting	21
10. Customer Service	23
11. How to Activate the Lock Warranty	23
12. Important Safety Instructions	23

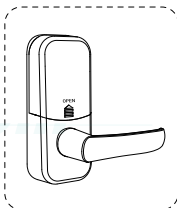
1. What's Included



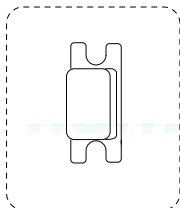
Deadbolt



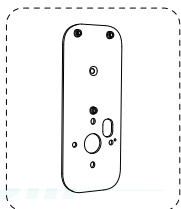
Front Panel



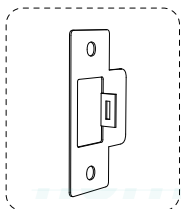
Back Panel



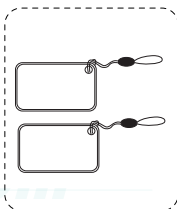
Deadbolt Cover



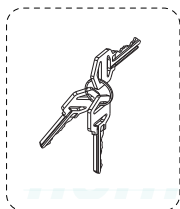
Mounting Plate



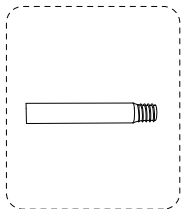
Strike Plate



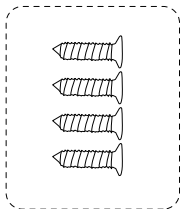
IC Card



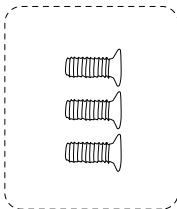
Keys



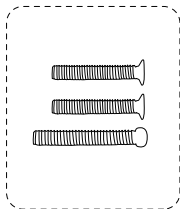
Front Panel
Screw



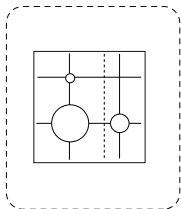
Strike Screws
Deadbolt Screws



Back Panel
Screws



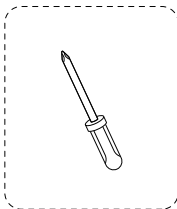
Mounting Plate
Screws



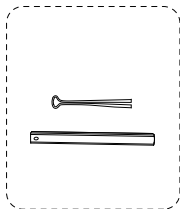
Mark Cards



User Manual



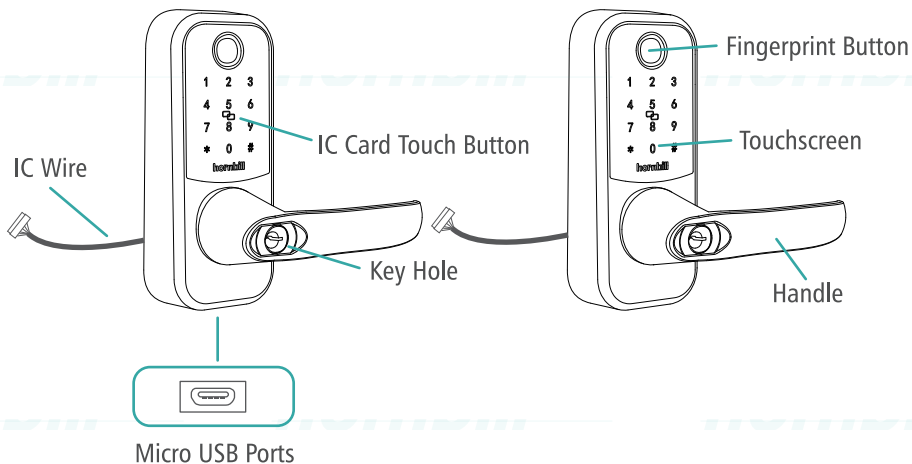
Phillips Screwdriver



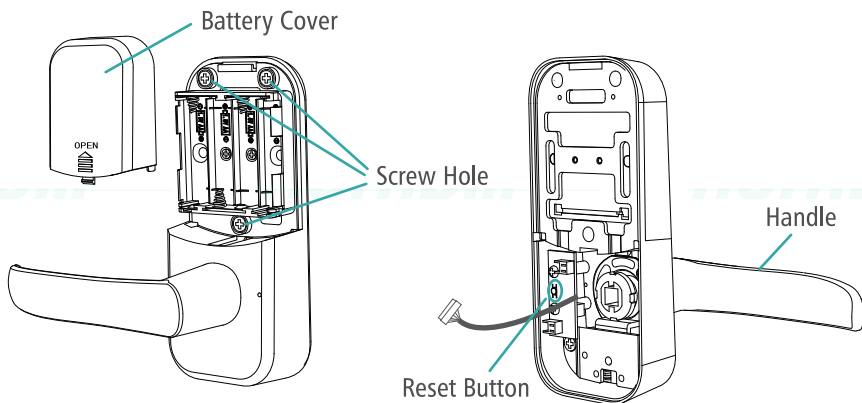
Flat Ruler
Pin

2. Product Overview

Front View



Rear View



3. Specifications

Maximum Access Code: 150

Maximum Fingerprint Inputs: 250

Maximum IC Card Inputs: 1000+

Maximum Authorized Admin: 1000+

Communication Mode: Bluetooth 5.0

Waterproof: IP65 (Front Panel)

Numeric Keypad: Touchscreen Keypad

Operation Temp Range: -20°C ~ 70°C (-4°F ~ 158°F)

Lock Material: Zinc Alloy

Battery: 4×AA batteries (Not provided)

Battery Life: 6 Months (If Open and Close the Door for 10 Times Per Day)

Times to Unlock and Lock: 250,000 Times (Mechanical)

4. Getting Started

Download TTLock App

1. Download the TTLock App from the App Store (iOS devices running version 10.2 and later versions) or Google Play (Android devices running version 5.0 and later versions).
2. Set up for TTLock account: Use your phone number (add "+1" in the front of number) or your email to register an account.



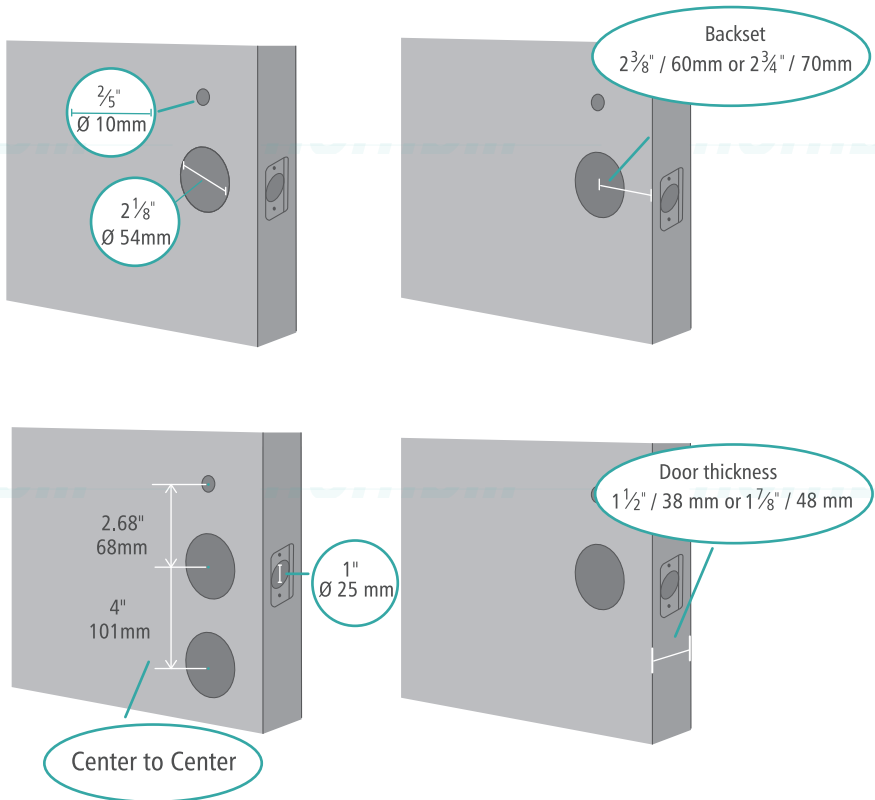
Prepare Door for Installation

1. Make sure that the following criteria are met so that the Smart Lock can be installed.

- ① Check the door status. Make sure the door frame is aligned with the door.
- ② There are no obstructions stuck in the door frame.
- ③ Leave enough space for the deadbolt to extend in to the door frame when the door is locked.

2. Check your door/frame dimensions to make sure that they fit the following measurements:

If you have an existing lock, remove it, including the bolt.



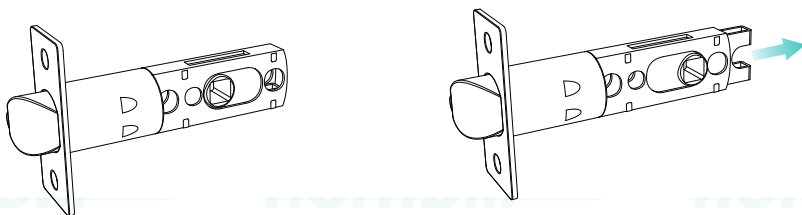
5. Installing the Smart Lock

Step1: Install the Deadbolt

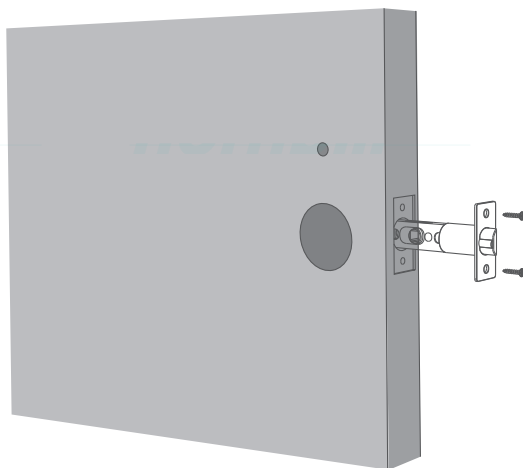
To install the deadbolt:

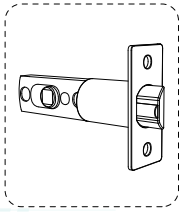
- ① Measure your door's backset dimension: whether it is 2 3/8"/60mm or 2 3/4"/70mm.
- ② If your door's backset dimensions 2 3/8"/60mm, use the provided deadbolt to install.

If your door's backset dimensions 2 3/4"/70mm, pull to extend simultaneously until the deadbolt locks in position as the illustration shows below.

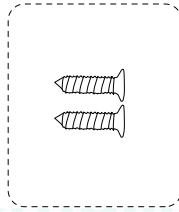


- ③ Insert the deadbolt into the door.
- ④ Screw into the door frame with a screwdriver.
- ⑤ What is required: Deadbolt, Deadbolt Screws, Screwdriver.

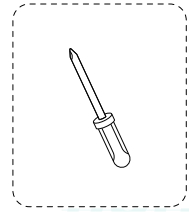




Deadbolt



Deadbolt Screws



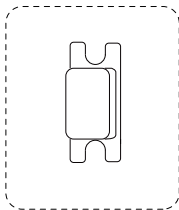
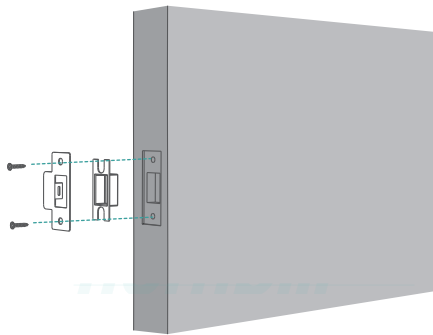
Phillips Screwdriver

Step2: Install the Strike Plate

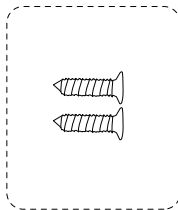
If you have an existing strike plate installed, skip this step.

To install the strike plate:

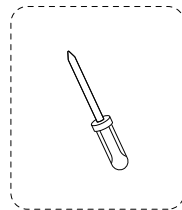
- ① Align the strike plate with the center hole of the deadbolt.
- ② Secure the strike plate with strike screws. Make sure the plate is placed in the correct direction.
- ③ What is required: Strike Plate, Strike Screws, Screwdriver.



Deadbolt Cover



Strike Screws

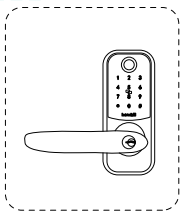
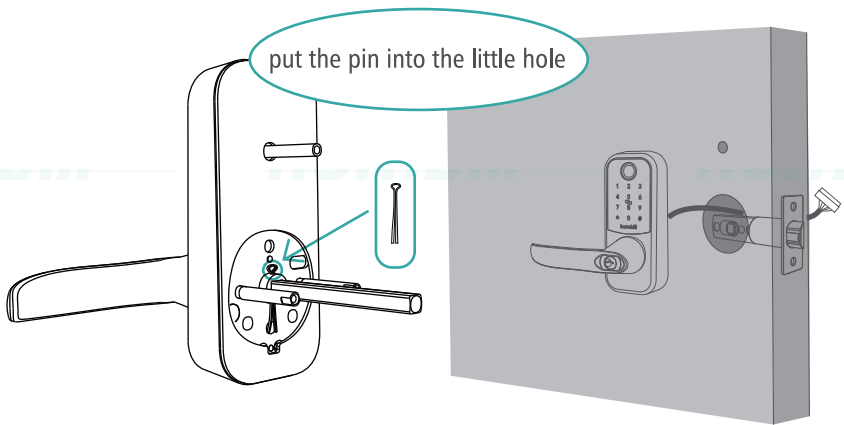


Phillips Screwdriver

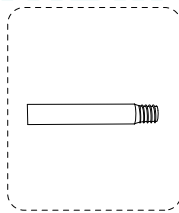
Step3: Install the Front Panel

To install the front panel into the door frame:

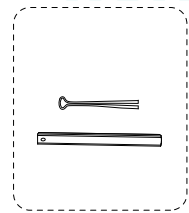
- ① Measure your cross bore dimension and determine the installation steps accordingly.
- ② Please use the provided the front panel screws to assist in installing the front panel.
- ③ You need to insert the pin into the little hole to assist in installing the front panel.
- ④ Make sure the flat ruler insert the center hole of the deadbolt.
- ⑤ Route the IC wire on the front panel on the top of the deadbolt.
- ⑥ What is required: Front Panel, Front Panel Screws.



Front Panel



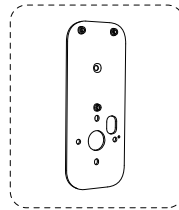
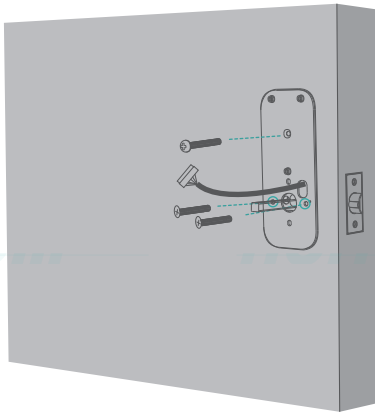
Front Panel
Screws



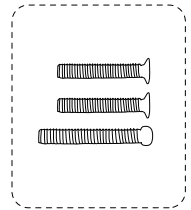
Flat Ruler
Pin

Step4: Install the Mounting Plate

1. Route the IC wire through the mounting plate.(Special hole)
2. Fix the mounting plate into the interior door frame using the mounting plate screws. Make sure the screws go through the holes of the deadbolt and the mounting plate, and lock into place.
3. What is required: Mounting Plate, Mounting Plate Screws



Mounting Plate

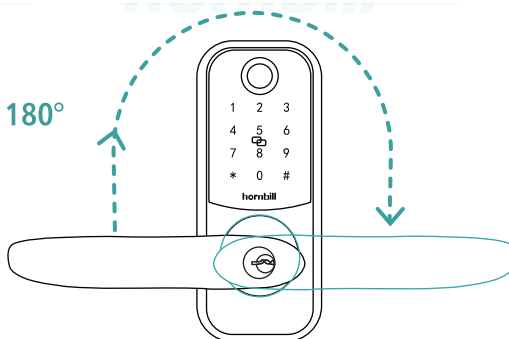


Mounting Plate
Screws

Step5: Install the Back Panel

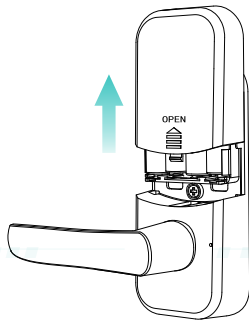
To install the Back Panel:

- ① Check/Adjust the Handle Direction. Remove the battery cover.

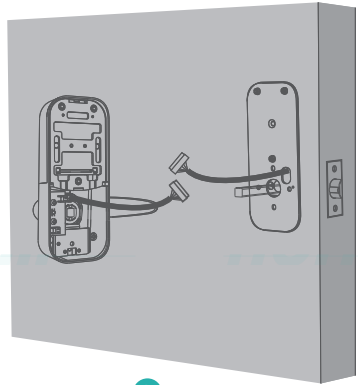


- ② Into the socket in one way. Make sure you match the dot on the connector with the pin on the circuit board correctly.
- ③ Align the tailpiece with the key cylinder.
- ④ Secure the provided screws into the back panel.

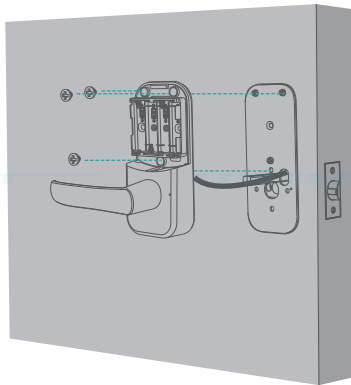
What is required: Back Panel, Back Panel Screws, Screwdriver.



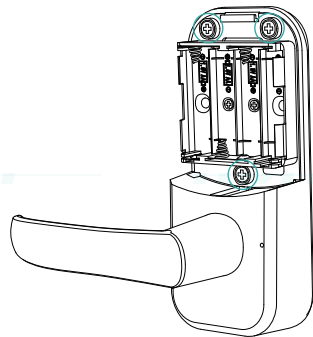
1



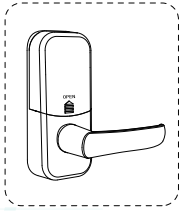
2



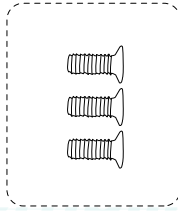
3



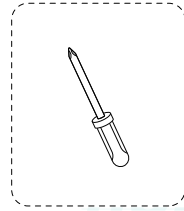
4



Back Panel



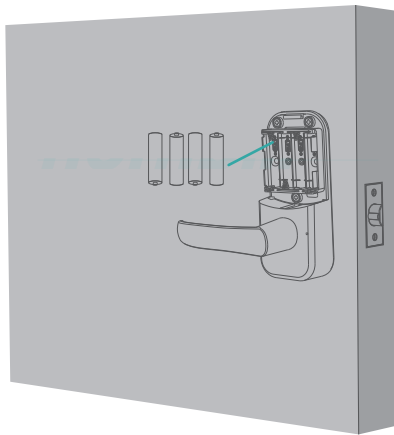
Back Panel
Screws



Phillips Screwdriver

Step6: Install Batteries

Insert 4 AA batteries into the battery compartment matching the polarity(+/-) indicated.



6. Setting up the Smart Lock

Pair Your Phone with Smart Lock

To pair your phone with Smart Lock:

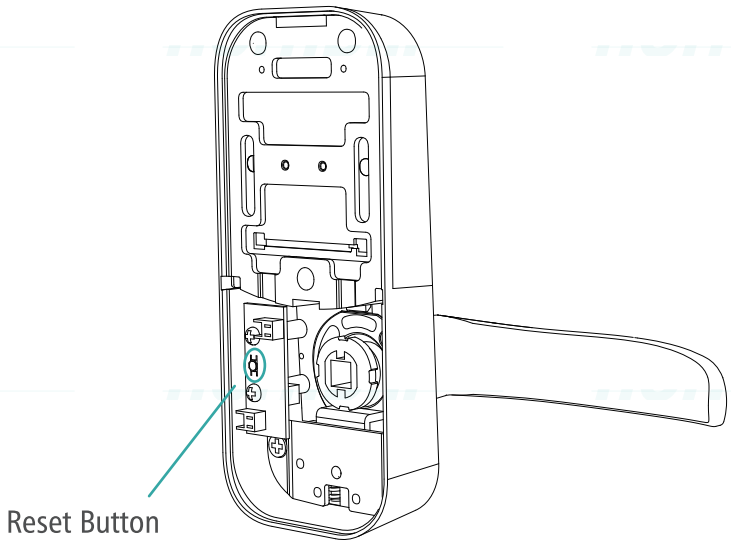
- ① Turn on Bluetooth, open the App, click Add Lock>Door Lock. Follow the on-screen instructions to complete the setup.

- ② Your phone will search for the smart lock, you need to touch the keypad any key.
- ③ After the lock is added, you will hear Di sound, the TTLock App will prompt you to name your Smart Lock.

Note: The user that is paired is the only administrator, and can authorize other users to use the lock.

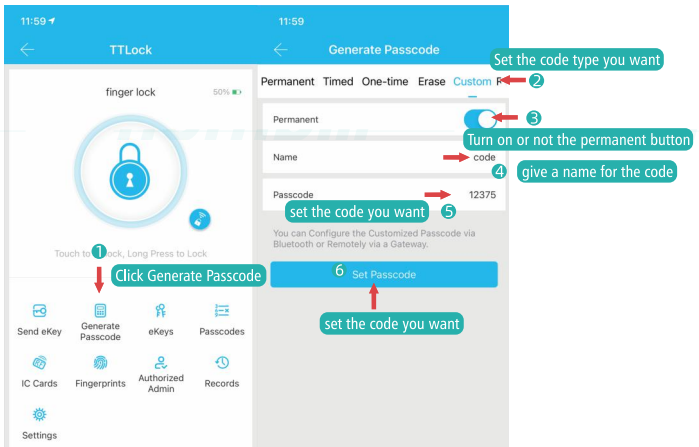
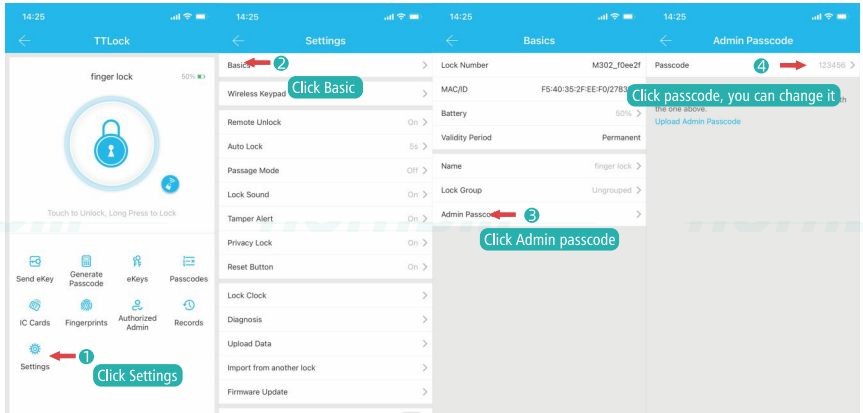
How to reset the smart lock? When the lock is added.

Take Apart the interior panel, don't need to remove the batteries, press and hold the reset button(this little button is on the circuit board), you will hear please enter the initialization passcode, enter 000# on the keypad, the lock will return to default settings. All the settings will be erased and need to be reset. You will hear please add Bluetooth admin for the lock. DO NOT press and hold the button if unnecessary.



Set Access Passcode

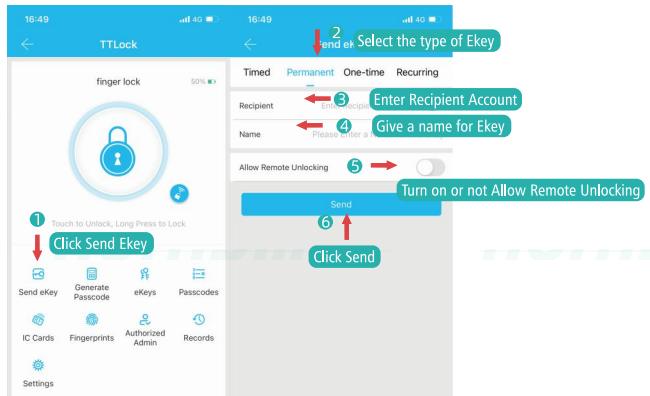
1. The owner passcode: You are the owner of the smart lock, so you can set your owner passcode. Click Settings>Basic>Admin Passcode. The admin passcode should be 4 to 9 characters.
2. Share the passcode with your guests and family members: Click Generate Passcode >Custom>give a name for the passcode>turn on permanent button>set the code you want, it should be 4 to 9 characters.



Send Ekey/Authorized Admin

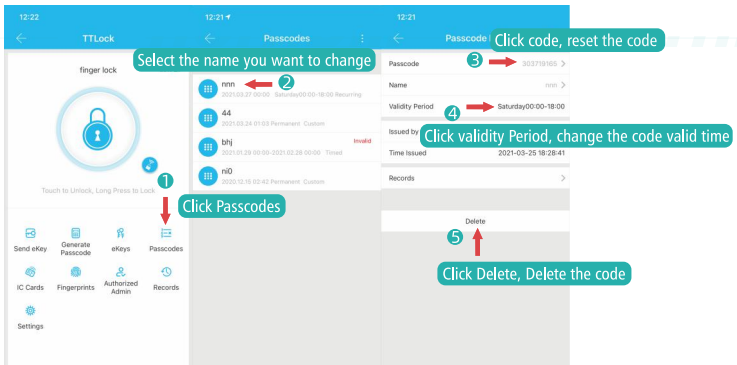
Note: If you hope your family member App controls the same lock, please make sure your family members have registered their own accounts.

1. Open your App, Click Send Ekey>Time/Permanent/One time/Recurring>Enter Recipient's account(If their account is phone number, enter 1 in the front of the number), turn on Allow Remote Unlocking button, click Send.
2. Let your family member to log out the App, and log in the App, they will find your lock in their App.



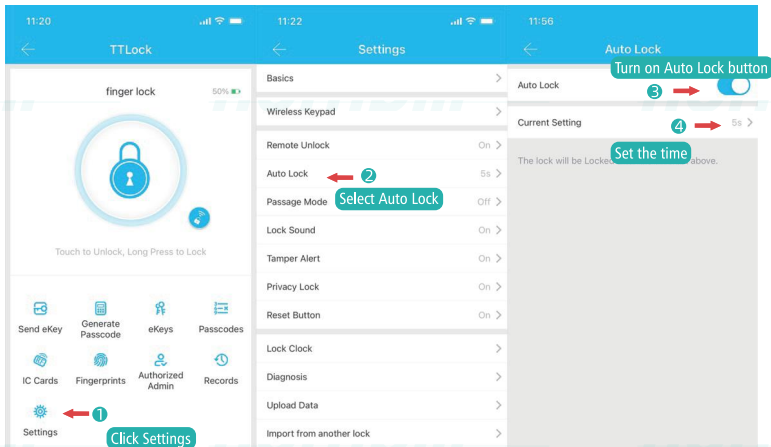
Change/Delete Passcodes

Open your App, Click Passcodes>select the passcode name you want to modify>Click passcode>reset/change it. You can change the Validity Period or delete it.



Turn on Auto-Lock Feature

Click Settings>Auto Lock>turn on> you can setting the time, 5~900 seconds.



Register/Delete the Fingerprint

1. Add Fingerprint

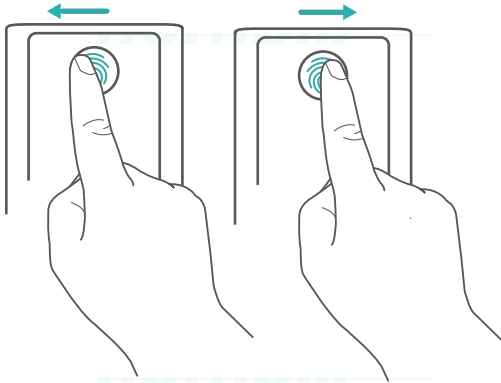
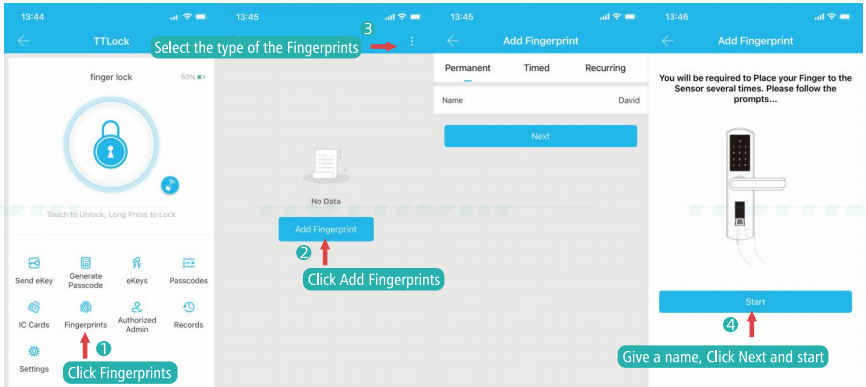
Click Fingerprints>Add Fingerprint>Permanent/Timed/Recurring>give a name for this fingerprint>Next

2. Delete Fingerprint

Click Fingerprints>select the Fingerprint name you want to delete>Delete.

Note:

- ① If the app fails to record your fingerprint, the fingerprint breathing light will breathe red once and a prompt tone will be heard. Move your finger slightly and try again.
- ② After the fingerprint is successfully registered, the fingerprint breathing light will turn off.
- ③ People aged over 70 and children under 5 are recommended to use the keypad (passcode) to unlock the door.
- ④ It is recommended to use your thumb, index finger, or middle finger to input your fingerprint.



Note: Register your fingerprint by placing it on the touchscreen and check whether your fingerprint is valid. If yes, your fingerprint will be recorded. You must register your fingerprint 8 times. Each time you register a fingerprint successfully, the corresponding number will light on. For example, you successfully register fingerprints 8 times, the number 1~8 are lighted.

Register/Delete the IC Card

The package comes with 2 IC Cards.

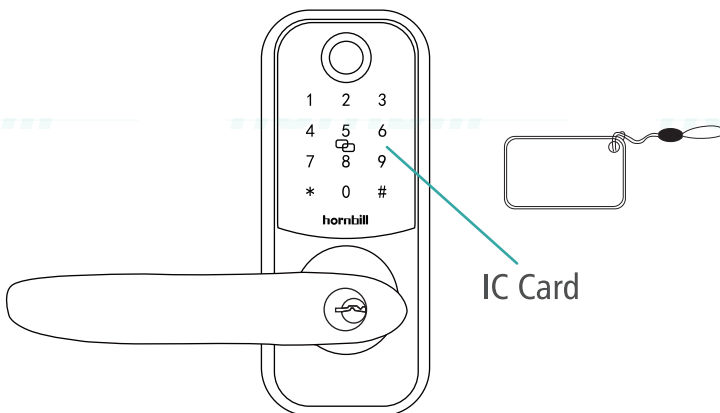
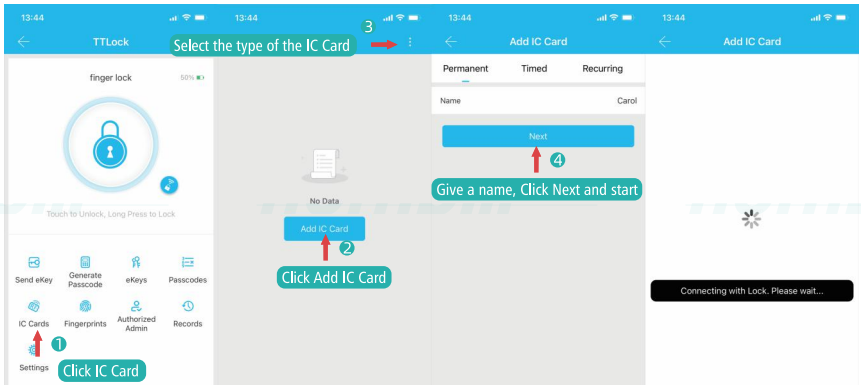
1. Add IC Card

Open your App, click IC Cards>Add IC Card>select Permanent/Recurring(It depends on what you need)>give a name for this IC Card>Click Next

2. Delete IC Card

Open your App, click IC Cards>select the IC Card name you want to delete>Delete.

Note: Placing the Card against the Card Reader Sensor on the Smart Lock.



7. Basic Operations

Unlock the Door

1. Use the Fingerprint Scanner

Scan your fingerprint and wait until the fingerprint breathing light breathes blue once.

The door will be unlocked within 2 seconds.

If not, the light will breathe red once. Repeat the steps to unlock.

If you fail to unlock the door after 5 attempts using the fingerprint scanner, the Smart Lock will be locked. Use the passcode instead to unlock.

2. Use the Passcode

Enter #passcode# on the keypad to unlock the door.

If the Passcode is correct, press #passcode#, the will unlock. If the passcode is wrong, press and enter a new passcode.

Paascode error: A beeps will be heard.

If you fail to unlock the door after 5 attempts using the passcode, the Smart Lock will be locked. The Keypad blinks blue for 3 seconds. Use the App instead to unlock.

3. Use the TTLock App

Open the TTLock App. Touch the main button to unlock the door.

The App will search for Smart Lock Bluetooth and connect(Turn on Bluetooth)

4. Use the IC Card

Placing the IC card on the keypad, the door will be unlocked within 2seconds.

5. Use the Physical Key

Lock the Door

1. One-Touch Lock the door

Hold down the # key for seconds on the keypad to lock the door.

2. Use the TTLock App

Open the TTLock App. Hold the main button to unlock the door.

The App will search for Smart Lock Bluetooth and connect(Turn on Bluetooth)

3. Set the Auto-Lock Feature

Click Settings>Auto Lock>turn on> you can setting the time, 5~900 seconds.

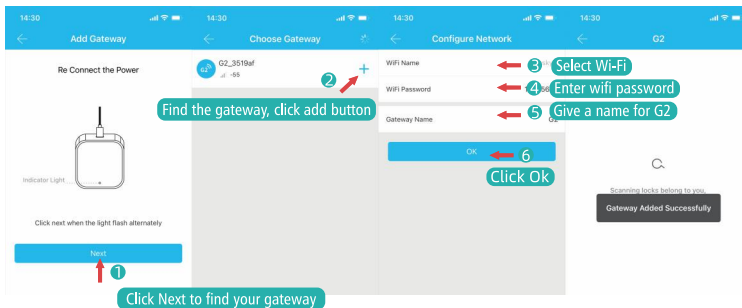
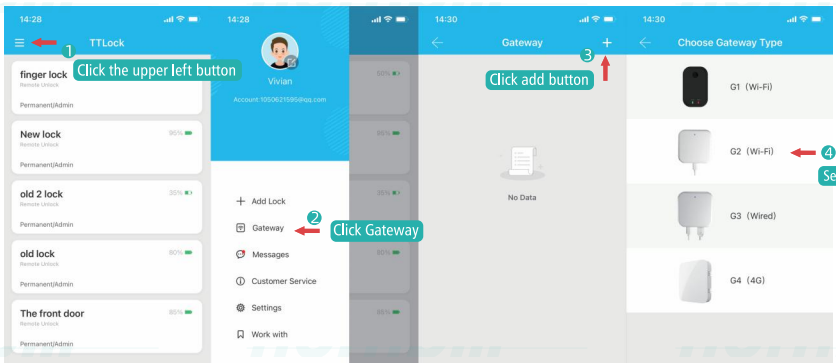
4. Use the Physical Key

8. Remote Control, Alexa/Google Home



Note: Remotely unlock or lock the door or Use Alexa/Google Assistant, the smart lock needs to be connected with the G2 gateway(It's sold separately)

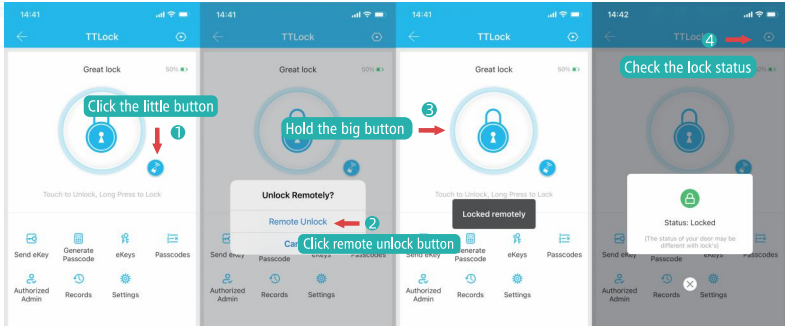
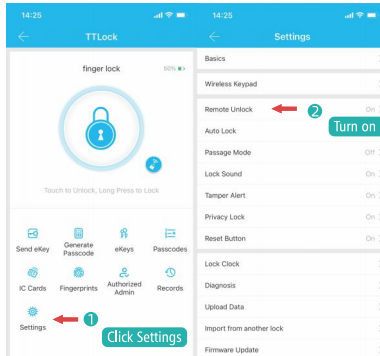
How to Pair with Your TTLock App

1. Please make sure your phone is connected with your Wi-Fi (works with 2.4Ghz Wi-Fi, it doesn't work with 5Ghz), and make sure your smart lock have paired with your TTLock account.(The gateway needs to be near by your locks within 16 ft.)
2. Please plug your gateway into the power, it will red and blue flashing.
3. When you successfully add the gateway on your App, the gateway will find your locks, it may take about 3 minutes. Lastly, your locks connected to your gateway, go back you will find the gateway is online status, if you have two locks(The locks are close to the gateway with 16ft), please click Nearby locks, then your locks will be connected to your gateway.



How to Remotely Unlock or Lock the Door

1. Click Settings>remote unlock button>turn on
2. Remotely unlock: Touch the little button  >remote unlock the door.
3. Remotely lock: Hold the main button  >remotely lock the door.



How to Use Alexa to Control the Door

1. Please download Alexa App on your phone, and log in your account (Amazon account)
2. Click More-and click Skills&Games, the US customer to search **TTLock**, the Canada customer search **ScienerSmart**, and then click ENABLE TO USE.
3. Log in your TTLock Account and Password

Note: If your TTLock account is your phone number, please enter "+" +1" on front of your phone number. e.g: +18669859909)

4. When you successfully add the your locks in Alexa, click Devices, you will find your locks, Click your locks, and click the Setting button on the upper right, turn on the unlock via App and turn on unlock by voice, please remember your voice code.

5. How to unlock the door via Alexa App

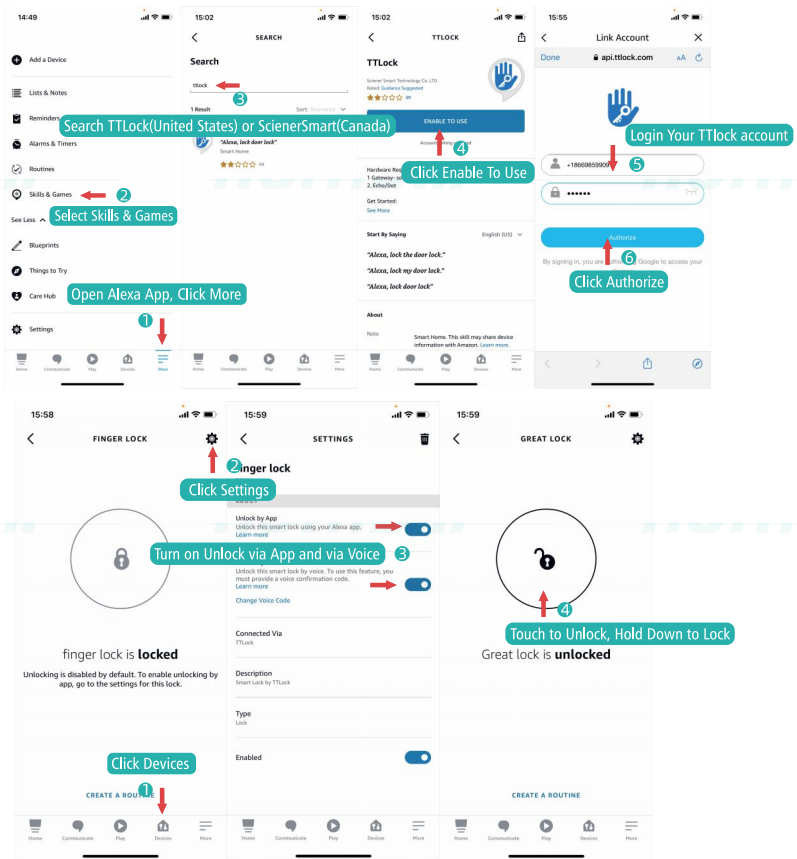
Alexa unlock the front door, Alexa will say, what is your voice code, then tell her your voice code, Alexa will unlock the door.

Or use Alexa App, Touch the main button to unlock the door.

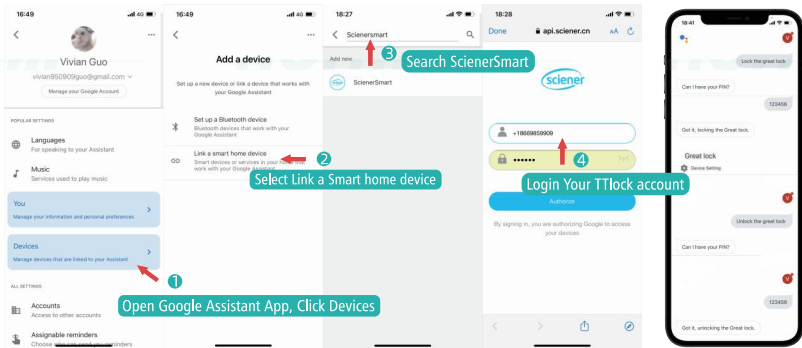
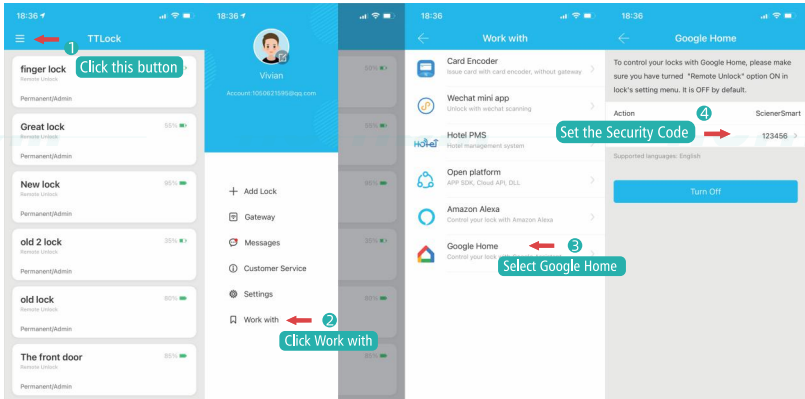
6. How to lock the door via Alexa App

Only need to say: Alexa lock the front door, Alexa will lock the door.

Or use Alexa App, Touch the main button to lock the door.



How to Use Google Home to Control the Door



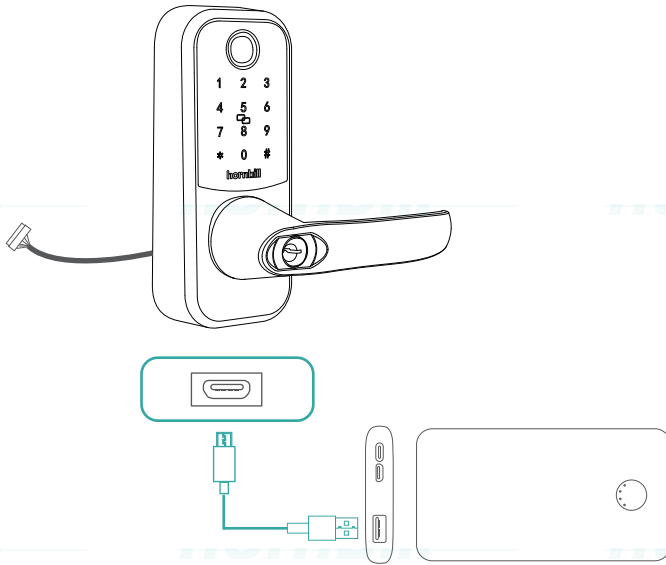
9. Troubleshooting

1. If the Smart Lock doesn't work?

- ① Press the reset button to restart the Smart Lock.
- ② Use the provided key to unlock.

2. If the Smart Lock's battery run slow?

- ① Insert a micro USB cable into the micro USB port and use a portable battery to power the Smart Lock.



② Use the provided key to unlock.

3. The Smart Lock voice is too loud.


You can turn off the lock voice on the TTLock App. Click settings> Lock Sound > Turn off

4. Why the Smart Lock's battery drains so quickly?

- ① Make sure you use the standard battery.
- ② Check whether the Smart Lock is installed properly.
- ③ Check whether the Smart Lock can be locked or unlocked smoothly using the thumb turn; If not, detach and install the Smart Lock again.
- ④ Check whether water spills in the Interior Assembly. Exposure to water will drain the battery quickly.
- ⑤ Contact Customer Service for technical support.

For troubleshooting, check the installation video and instructions. Or You can contact Customer Service staff for technical support via email.

10. Customer Service

 Customer Support: homide@milinaa.com


 Phone Number: 1-866-985-9909 (Available after 6:00 PM at PT)

FaceTime/iMessages: +8617688933815

WhatsApp: +8617688933815

Wechat: +8617688933815

Skype: Vivianhornbill

 Smart Lock: 36-Month Limited Warranty

Mechanical Part: 36-Month Limited Warranty

If you have any questions of the lock, please send email to us, we will help you.

11. How to Activate the Lock Warranty

When you received the lock, please send the information to the customer service, we will activate the warranty for the lock, then your lock will have a 2-year warranty and free lifetime customer service. When your lock is broken or defective, we will help you to get the replacement or help you to fix the issues asap. Thank you so much for your support.

Your Name:

Amazon Order Number:

12. Important Safety Instructions

1. DO NOT attempt to install or repair the product without authorization.
2. Do not use excessive force or sharp objects to press lock buttons, as this can damage the product.
3. Make sure the door is completely closed when going outside. The manufacturer does not assume responsibility for any harm caused by your improper closing the door.
4. Replace batteries when the low battery alarm is heard.
5. Change your access passcode regularly to ensure security.