



User Manual

13 Gallon Stainless Steel Sensor Trash Can

(DZT13P / DZT13PL)



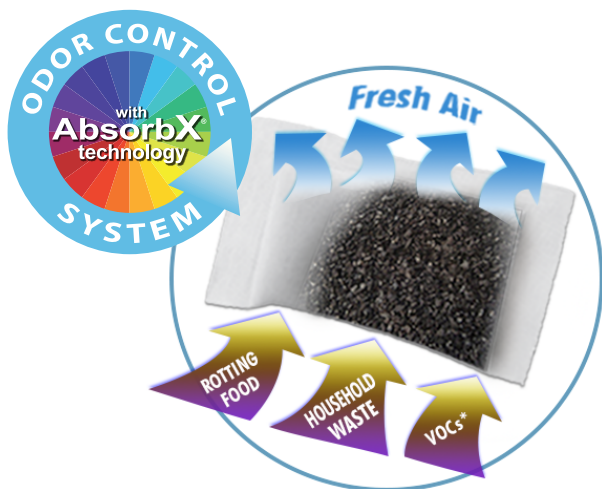
**Your 100%
satisfaction is
our #1 goal!**

We're here to help!

If you have any questions or concerns about this product, please contact iTouchless Customer Support for immediate assistance. You can reach us at **1-844-660-7978** or **support@itouchless.com**.

About your iTouchless® Trash Can

Congratulations! Your touchless trash can is your new best friend at home or the office. Our patented touchless sensor technology is safe to use and helps you keep a healthy environment by preventing exposure to the illness-causing bacteria that live on trash can surfaces.



iTouchless is the "touch less, do more" company.

Our technologically advanced waste receptacles and housewares are with you throughout your day – at home and at work – making daily chores quicker, easier, and more hygienic, so you can focus on the things that matter most. Our products are designed by industry professionals who have been inventing innovative smart housewares for decades. Everything we make is rigorously tested to ensure you're getting a high quality product that will work perfectly for years of use.

We also design our products to be as attractive as they are dependable, so you can get the perfect look to match any décor.

#TouchLessDoMore

About the Company

Follow us on Facebook® and Instagram® to get news about new product releases, special discounts, and contests.



www.facebook.com/itouchless



www.instagram.com/itouchless

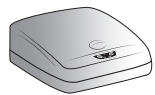
Discounts & Prizes



Go to www.itouchless.com/register to register your product for simple warranty service and to receive product updates and special offers.

Product Model # DZT13P / DZT13PL

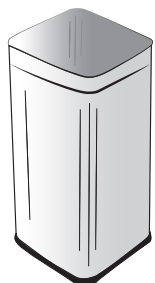
Register your Product



Trash Can Lid



Trash Bag Retainer Ring



Stainless Steel Can Body



One (1) AbsorbX® Odor Filter pre-installed (lasts up to 3 months)*



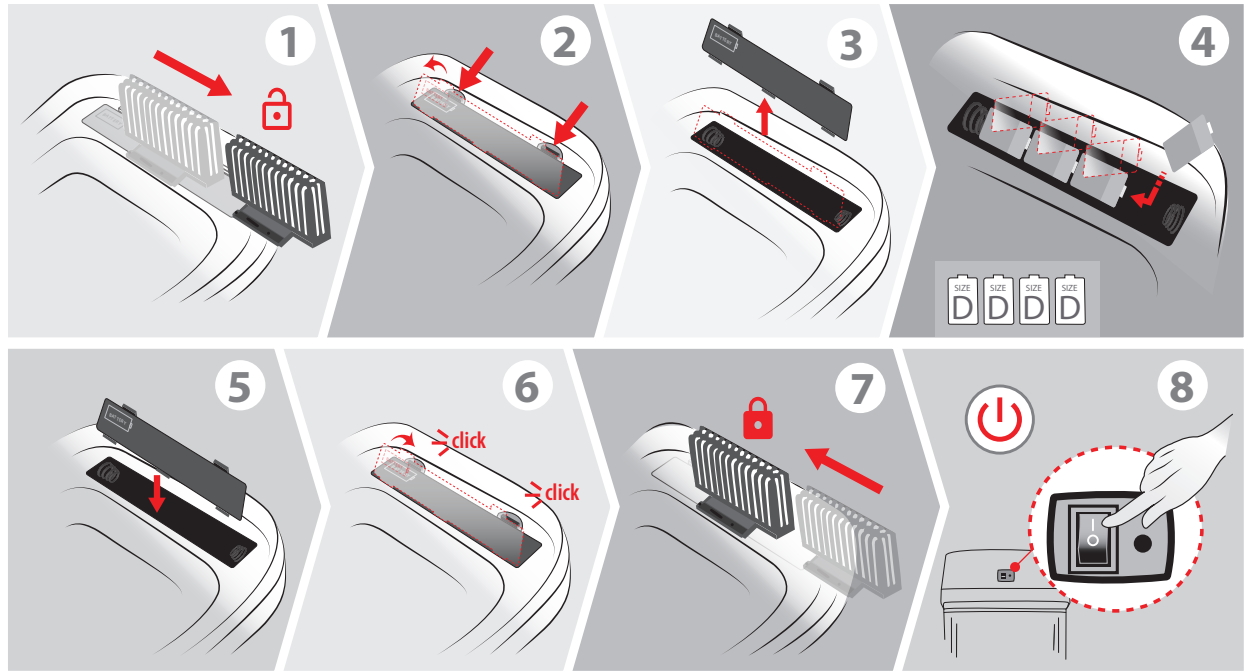
User Manual

Contents of the Box

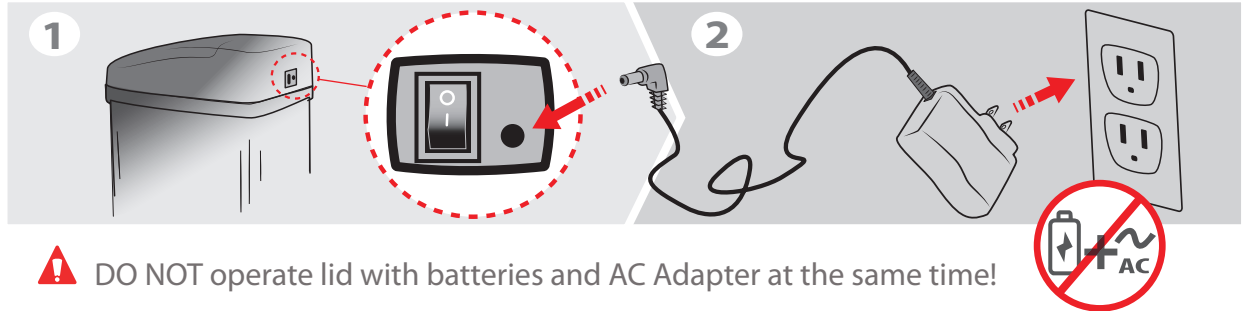
*See "AbsorbX® Odor Filter" section

Battery Power

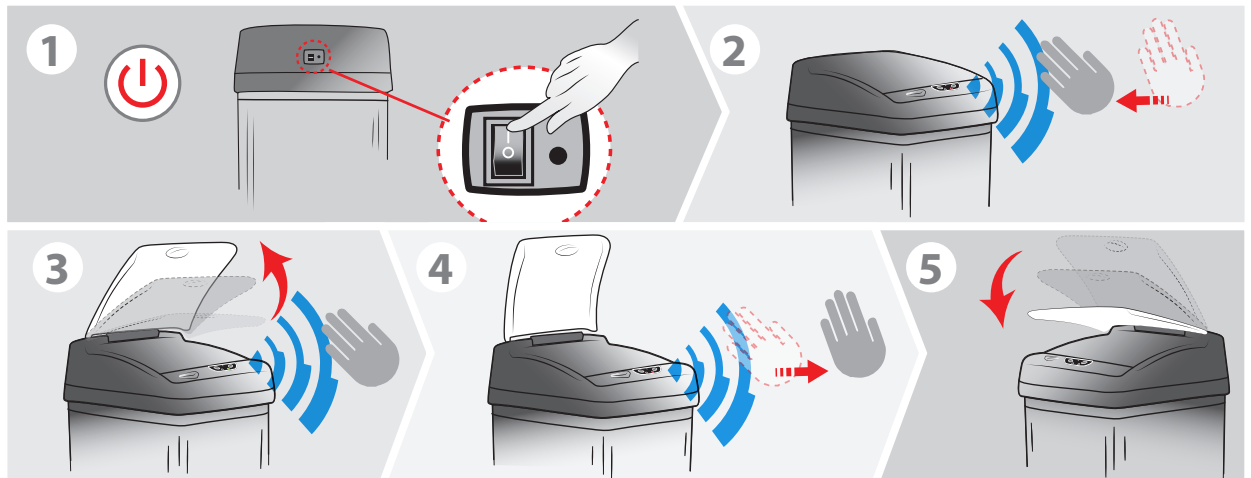
4 "D" Size
(batteries not included)



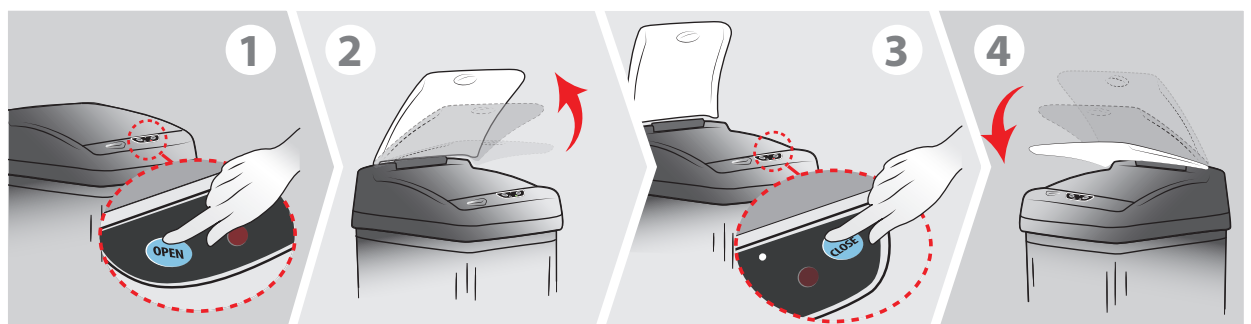
AC Power (adapter sold separately)



Operating Sensor-Activated Lid

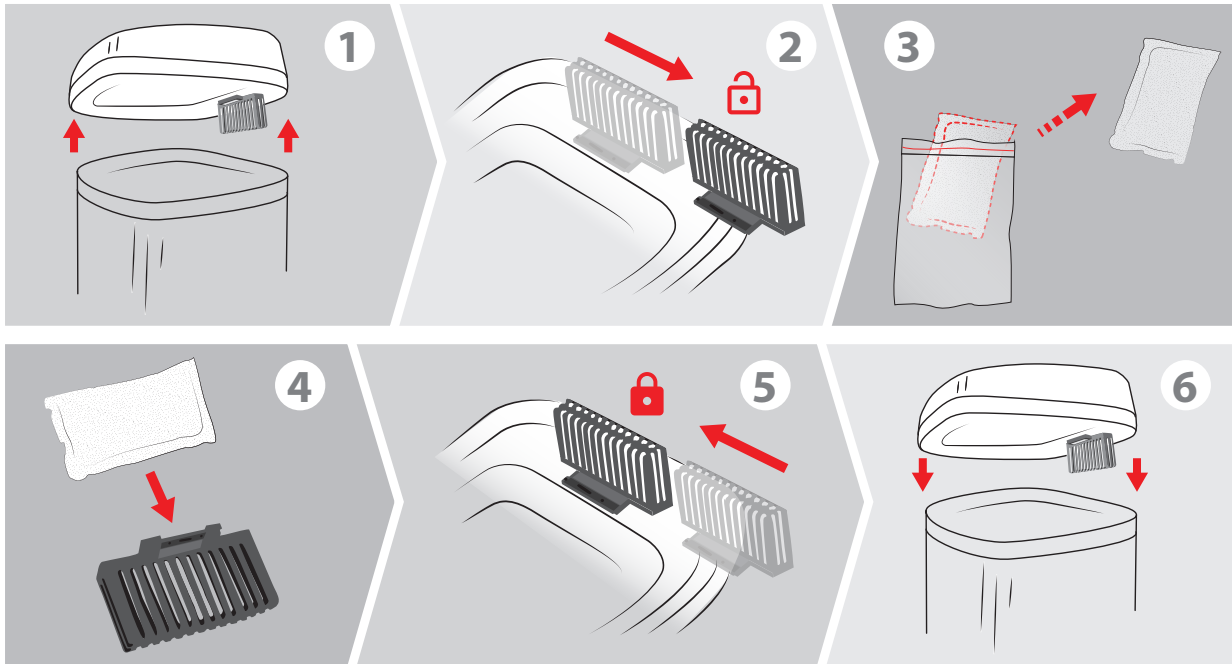


Operating Manually



AbsorbX® Odor Filter

(first filter
is included)



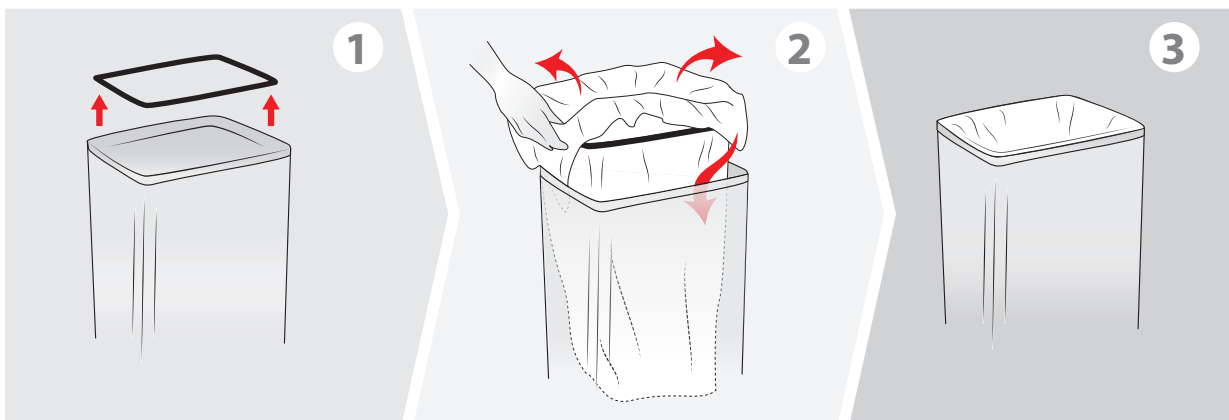
 www.itouchless.com/battery-filter-replacement

AbsorbX odor filters utilize all-natural activated carbon technology to absorb and neutralize trash odors, leaving your kitchen smelling fresh and clean. Illness-causing Volatile Organic Compounds (VOCs) are also trapped in the filter, making the air you breathe cleaner and healthier.

- Replace AbsorbX® Odor Filter every 3 months or when odor becomes too strong.
- Used AbsorbX® Odor Filter should be disposed of in a trash can.
- Order replacement AbsorbX Odor Filters at www.itouchless.com/absorbx



AbsorbX® Odor Control Technology

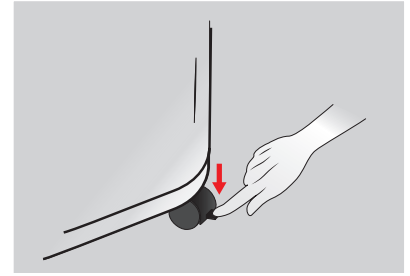
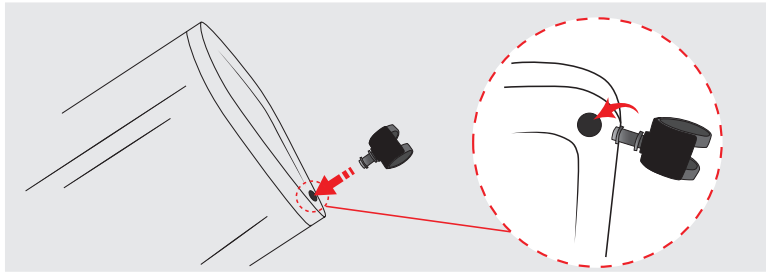


 www.itouchless.com/retainer_ring_video

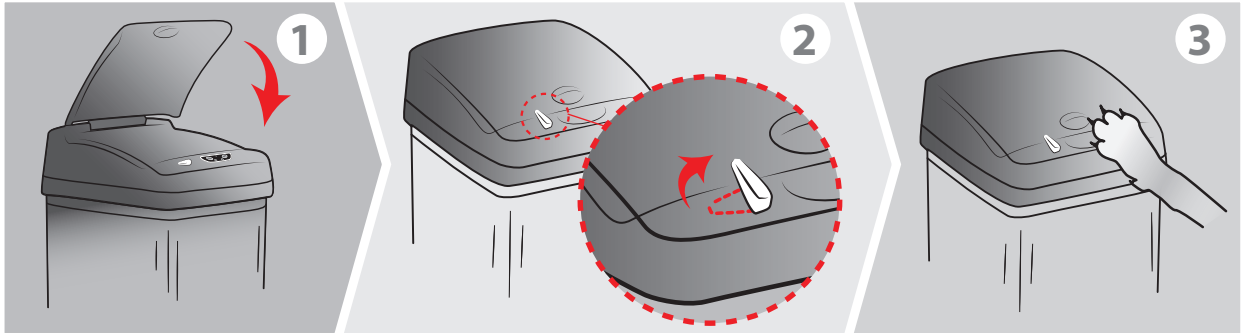
Trash Bag Retainer Ring

Insert & Lock Wheels

(wheels
sold separately)

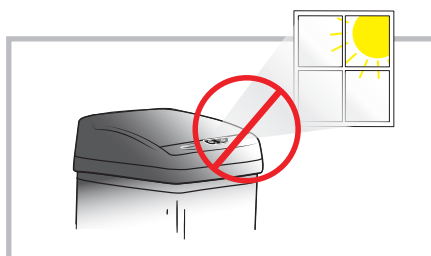
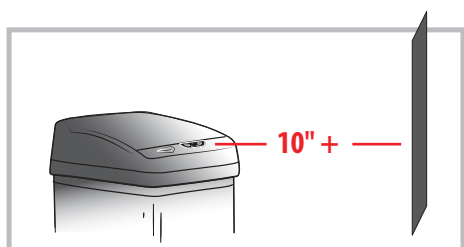


Child & Pet Lock

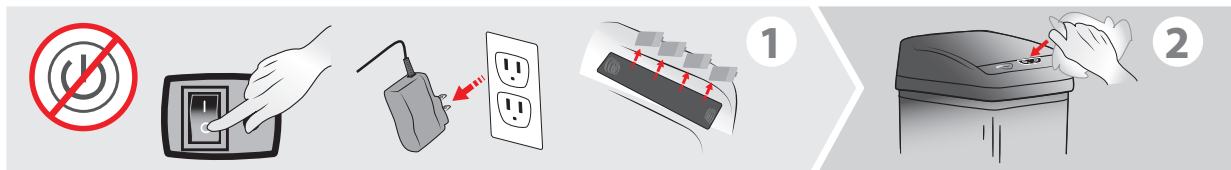


Attention

1. This item is not intended for use by persons (including children) with reduced physical, sensory or mental capabilities, or lack of experience and knowledge, unless they have been given supervision or instruction concerning use of the item by a person responsible for their safety. Children should be supervised to ensure that they do not play with the item.
2. Non-rechargeable batteries are not to be recharged.
3. Different types of batteries or new and used batteries are not to be mixed.
4. Exhausted batteries are to be removed from the appliance and safely disposed of.
5. If the appliance is to be stored unused for a long period, the batteries should be removed.
6. The supply terminals are not to be short-circuited.
7. Do not submerge the lid in water as it houses the electronic control. You may clean it with a lightly dampened cloth.
8. Clean the trash can body only with products safe for use on stainless steel.
9. Do not press or force the Lid Cover to close. Lid will close automatically after your hand is removed from the sensor zone.
10. Replace batteries immediately when the indication light turns to yellow/amber. This will ensure the lid continues to operate properly.
11. Avoid direct sunlight on the infrared sensor.
12. Ensure there is enough room to operate the trash can without blocking the opening and closing of the lid.
13. Do not use a power adapter that is not authorized by iTouchless; it may result in fire, electric shock or injury.
14. Do not use power adapter and battery at the same time to operate the trash can. It can only be powered by one source at a time.
15. Do not overstuff trash bag. It may cause tearing or difficulty removing.
16. Automatic parts may not be suitable for small children or pets.





Maintain at least 10 inches between sensor and wall. Keep sensor out of direct sunshine.



Turn off power, unplug adapter and remove batteries, then clean the sensor area with a soft, damp cloth and dry immediately.



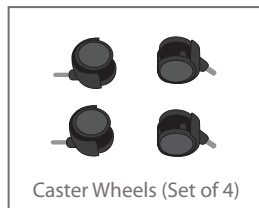
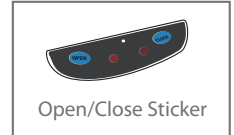
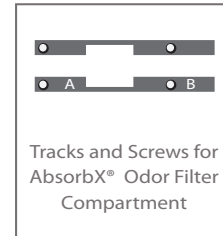
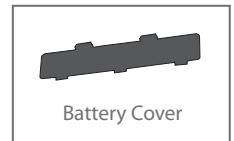
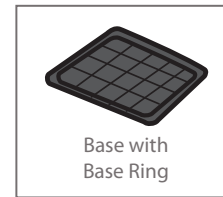
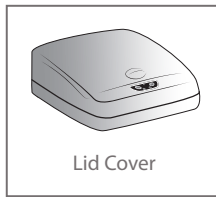
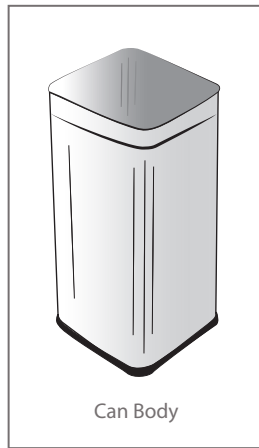
TO RESET: Turn off power, unplug adapter and remove batteries, and let trash can sit for at least 2 hours, then plug back in, replace batteries, power on, and attempt to operate lid.

 Problem	 Solution
1. The trash can is brand new, and only works occasionally	Peel off the thin, transparent protector/sticker on top of the sensor eye. If the lid still doesn't work regularly, try a new set of batteries. Then follow the General Troubleshooting Steps .
2. The lid stays open or lid opens and closes continuously	The sensor eye may be affected by dirt, stain, dust, moisture or reflection. Move the trash can to a different location or turn the trash can slightly so that the sensor faces another direction, and follow the General Troubleshooting Steps .
3. Grinding noise when the lid opens/closes	This can be caused by broken gears or lid hinge. <ul style="list-style-type: none"> • Check for damage on the hinges that connect to the lid • Follow the General Troubleshooting Steps • Contact us at 1-844-660-7978 for warranty service
4. The lid does not open/close Important: Do not use batteries and the AC power adapter at the same time. It can only be powered by one source at a time.	If you are using Batteries: <ul style="list-style-type: none"> • Ensure batteries are inserted correctly and close the battery cover firmly • Turn power switch to "ON" position to see if the indication light is visible If you are using AC Power Adapter: <ul style="list-style-type: none"> • Unplug the adapter and insert new alkaline batteries to see if the lid works on battery • If the lid works with batteries, the AC adapter may be broken
5. I wave my hand over the sensor eye, but the lid does not open	It is not a motion sensor. Hold your hand or object steadily (do not wave your hand) within 4-6 inches over sensor eye for it to detect and open.
6. Why is the indicator light flashing in yellow/amber color?	The battery power is low. Replace all batteries with a new set of alkaline batteries. Do not use rechargeable batteries or old batteries.

If your trash can is still not working after trying these troubleshooting steps, please contact us through www.itouchless.com/contacts/ for warranty service.

Order Replacement Parts & Optional Accessories

Order at www.itouchless.com/parts



One (1) Year Limited Warranty

Touchless Trashcan is distributed by iTouchless Housewares & Products, Inc. (iTouchless) with the highest quality components and most advanced technologies available. The trash can is warranted to be free from defects in material and workmanship, given normal use and care, for 365 days from the date of the original purchase with proof of purchase within the United States and Canada. iTouchless will only honor warranty requests from orders placed with our authorized dealers. Items sold as used, floor sample or refinished are sold solely under the terms and conditions of the selling party; iTouchless will not warrant such purchase. iTouchless will repair or replace a working condition Lid Cover thereof which fails as the result of such a defect during the warranty period.

The warranty is the customers' exclusive remedy for product defect and does not apply to:

- User modification
- Attachments to product by user that causes damage
- Any product, on which the seals and/or serial numbers have been broken, removed, tampered with, defaced or altered in any manner
- Damage caused by abuse, misuse, accident, water or theft

Except as stated above, iTouchless makes no express or implied warranties as to any product, in particular, makes no warranty of merchantability or of fitness for any particular purpose. iTouchless shall not be liable for consequential or incidental damages arising from any product defect. Our Liability is limited to the replacement of any defective product. iTouchless expressly disclaims all warranties not satisfied in this limited warranty. Any implied warranties that may be imposed by law are limited to the terms of this limited warranty. The Can Body, AbsorbX® Odor Filter, Retainer Ring, Filter Compartment, and Battery Cover are not covered by this warranty.

If Trash Can should fail during the warranty period, contact us through <http://www.itouchless.com/contacts/> to submit a request for warranty service. For additional details, please refer to the warranty email that iTouchless will provide. The required warranty fee is subject to location. Fee references are as following: for Contiguous 48 U.S. States \$9.95 and up, for Canada \$19.95 and up, for Alaska and Hawaii \$29.95 and up.

Subject to the above conditions, we will ship a working unit to you after payment has been provided for the warranty service fee. This warranty gives you specific legal rights. However, you may also have other rights that vary from state to state and province.