

BRAUN

Silk·épil[®] 9



90512561/III-19



Type 5378
Modèle 5378
Modelo 5378

www.braun.com

SES 9-720

SES 9-880

SES 9-870

SES 9-890



Braun Infolines
Lignes d'assistance Braun

English	6
Français	16
Español	25

Thank you for purchasing a Braun product.
We hope you are completely satisfied with
your new Braun Silk-épil.

If you have any questions, please visit
www.service.braun.com or call:

US residents 1-800-BRAUN-11

1-800-272-8611

Canadian residents 1-800-387-6657

Merci d'avoir fait l'achat d'un produit Braun.
Nous espérons que vous serez entièrement
satisfait de votre nouvel épilateur Silk-épil
de Braun.

Si vous avez des questions, veuillez visiter

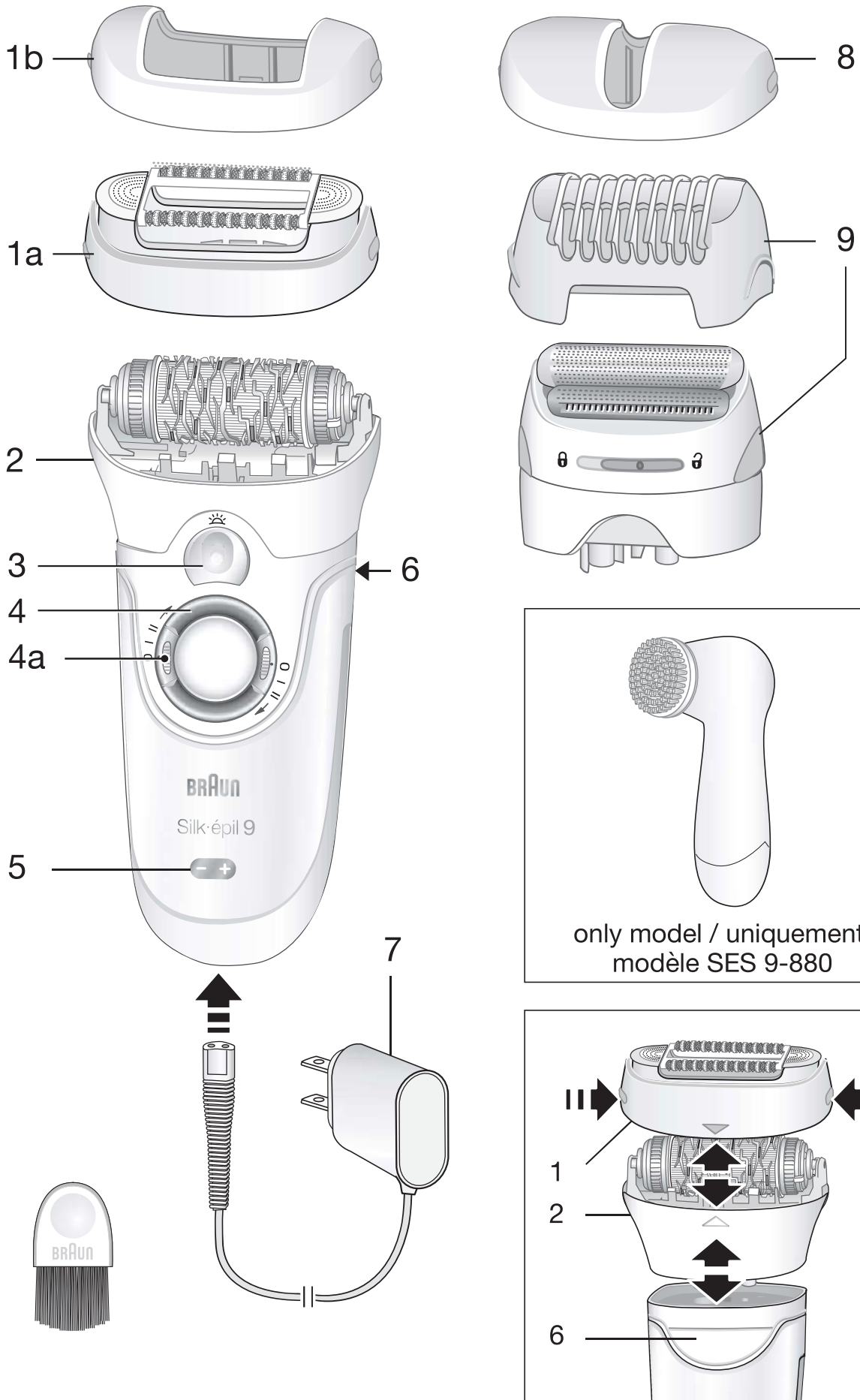
www.service.braun.com ou appeler

Braun Canada : 1-800-387-6657

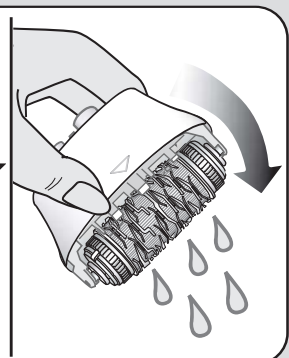
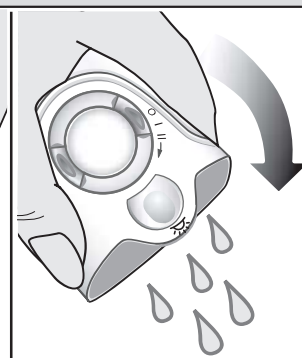
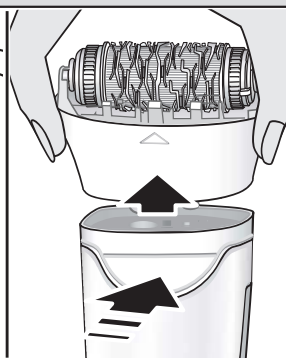
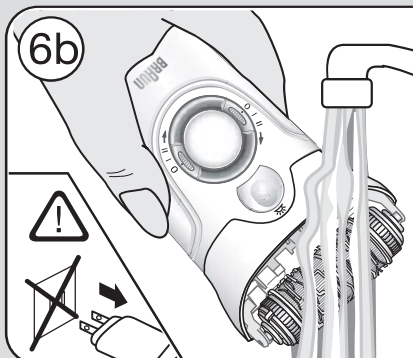
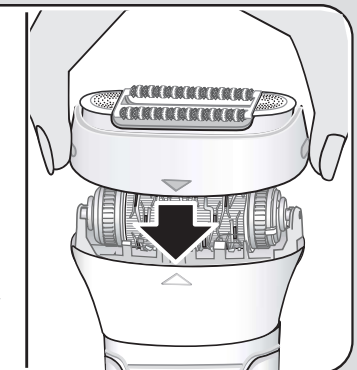
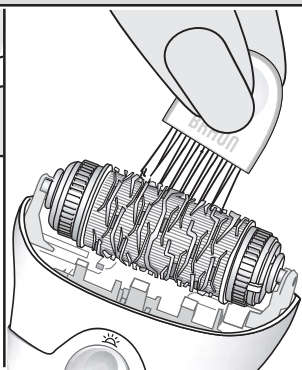
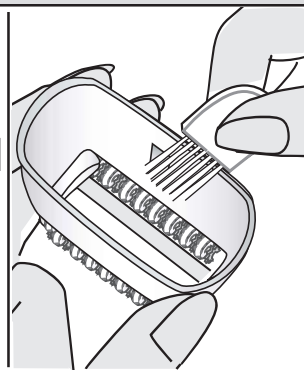
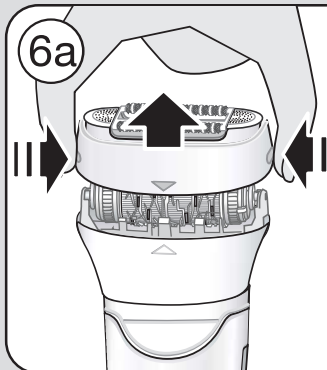
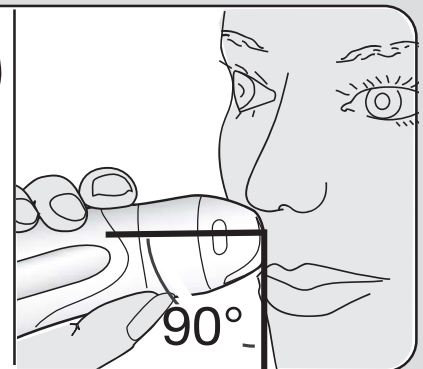
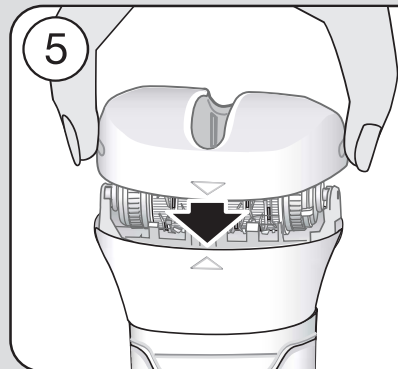
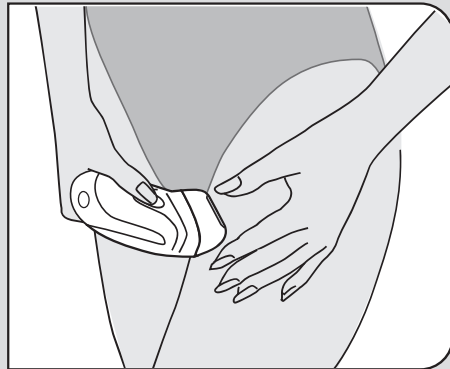
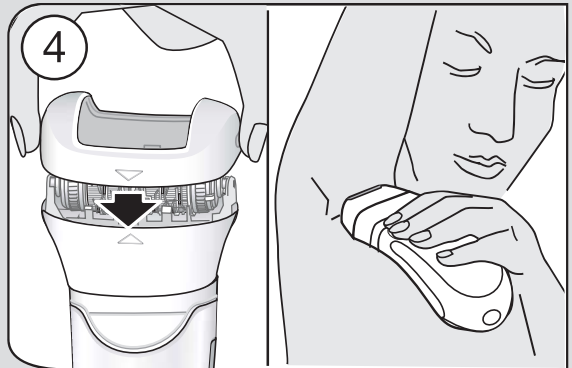
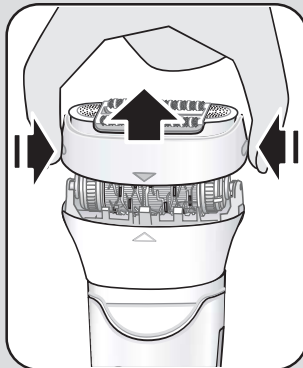
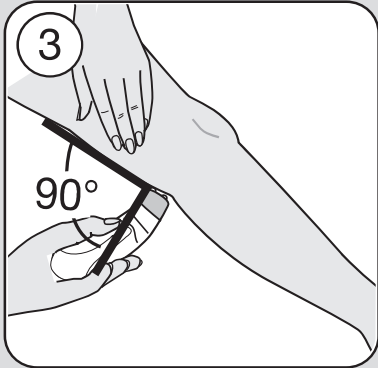
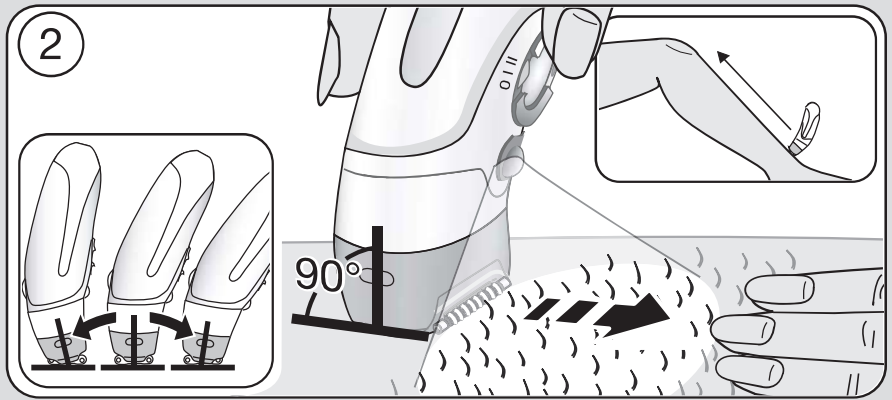
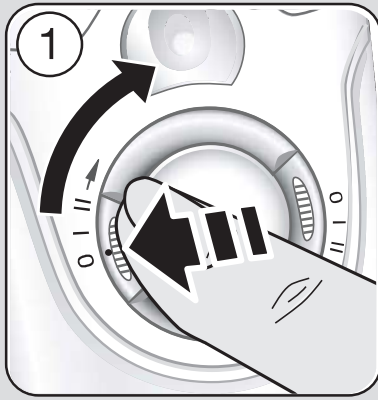
Gracias por haber comprado un producto
Braun.

Esperamos que quede completamente
satisfecha con su nueva Silk-épil.

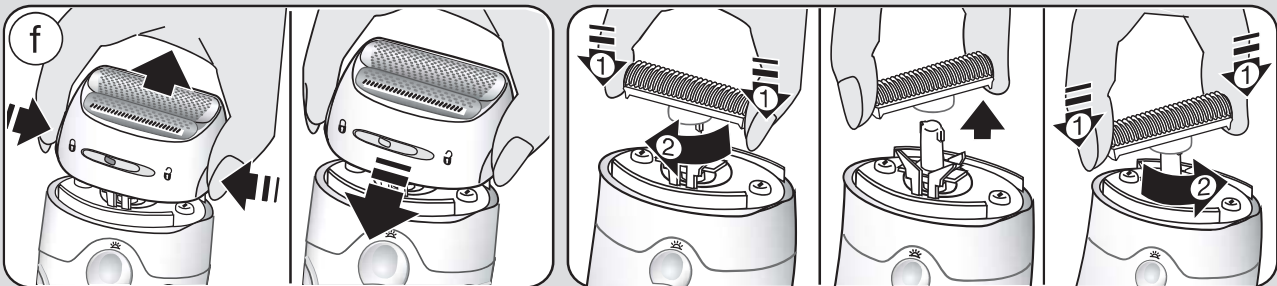
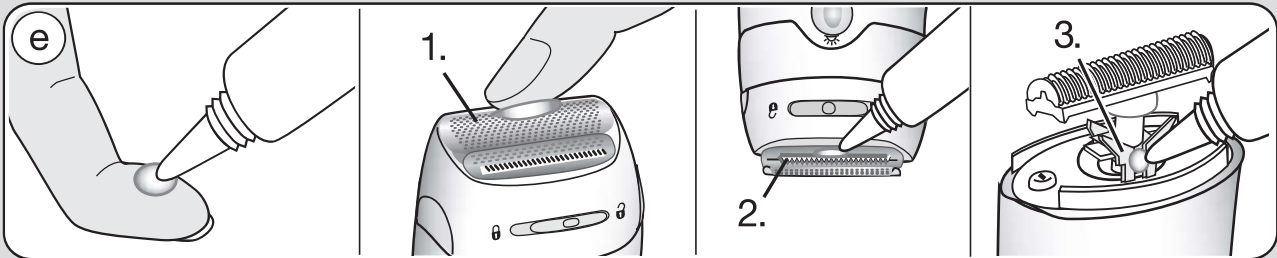
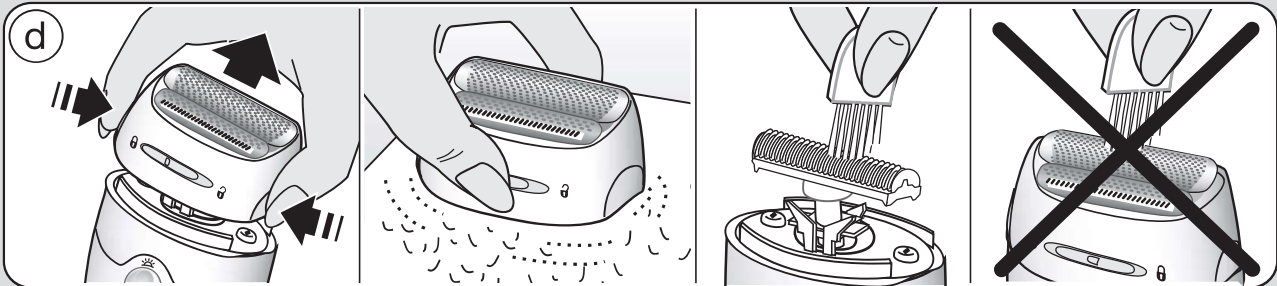
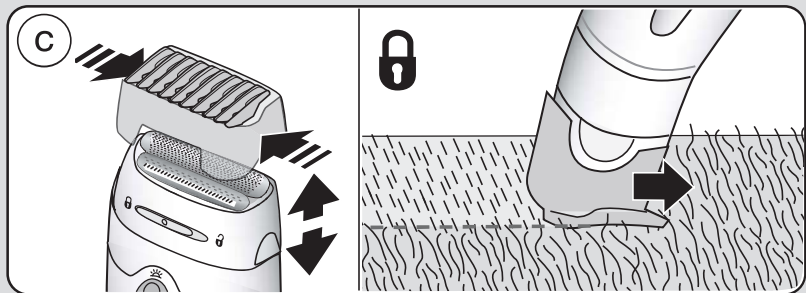
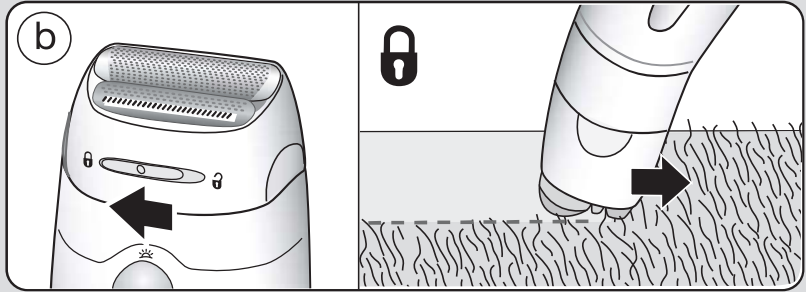
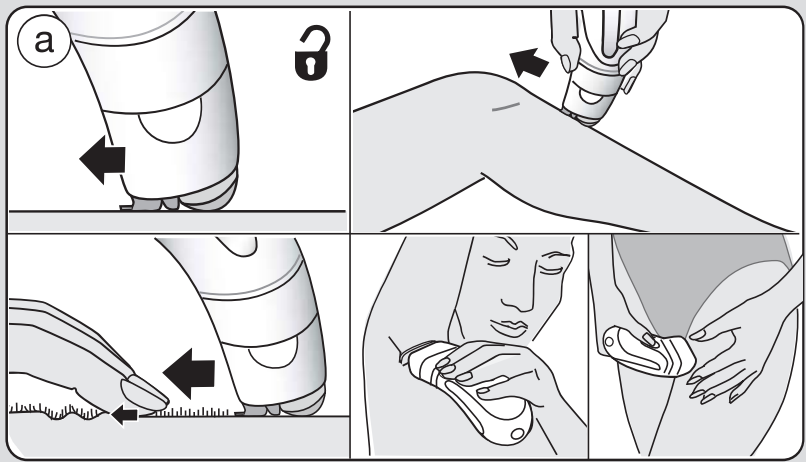
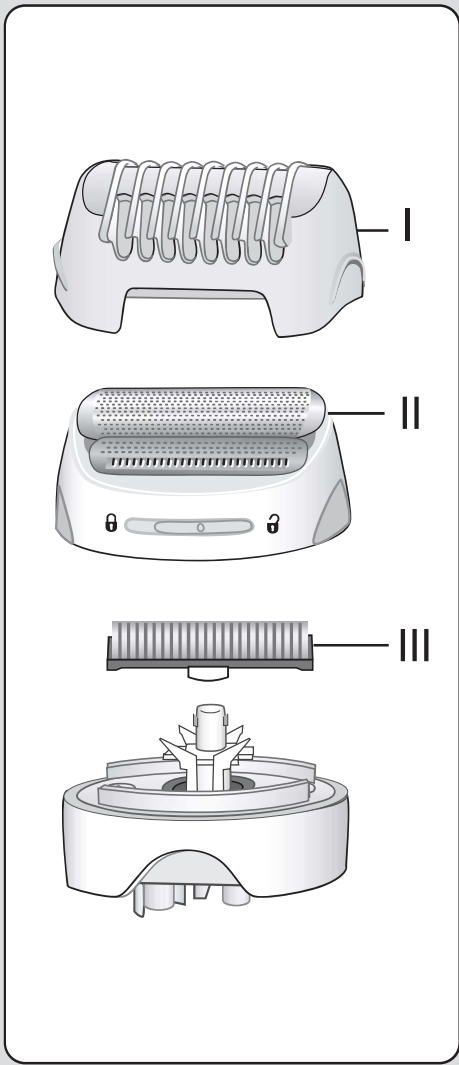




A



B



IMPORTANT SAFETY INSTRUCTIONS

When using an electrical appliance, basic precautions should always be followed, including the following:

Read all instructions before using this appliance.

This appliance is provided with a special cord set with integrated Safety Extra Low Voltage power supply. Do not exchange or manipulate any part of it.



When disconnected, the hand-held part of this appliance may be used in a bath or shower.

DANGER

To reduce the risk of electric shock:

1. The charger unit is not for immersion in water or for use in shower.
2. Do not reach for a charger that has fallen into water. Unplug immediately.
3. Do not place, store or charge the appliance where it can fall or be pulled into a tub or sink. Do not place in or drop into water or other liquid.
4. Except when charging, always unplug this appliance from the electrical outlet.
5. Unplug this appliance before cleaning.
6. Do not use an extension cord with this appliance.

FOR HOUSEHOLD USE ONLY

WARNING

To reduce the risk of burns, fire, electric shock, or injury to persons:

1. Close supervision is necessary when this appliance is used by, on, or near children or persons with disabilities.
2. Use this appliance only for its intended use as described in this manual. Do not use attachments not recommended by the manufacturer.
3. Never operate this appliance if it has a damaged cord or plug, if it is not working properly, if it has been dropped or damaged, or if the power supply has been dropped into water. Return the appliance to a service center for examination and repair.
4. Keep the cord away from heated surfaces.
5. Never drop or insert any object into any opening.
6. Do not use outdoors or operate where aerosol (spray) products are being used or where oxygen is being administered.
7. Do not use this appliance with a damaged or broken foil, as serious skin injuries may occur.
8. Always attach plug to appliance first, then to outlet. To disconnect, turn all controls to «off», then remove plug from outlet.
9. When plugging to an electrical outlet outside the USA, use a plug adapter to match the outlet's pin configuration.
10. Caution: The battery used in this device may present a fire or chemical burn hazard if mistreated. Do not disassemble, heat above 100 °C (212 °F) or incinerate.
11. To recharge the battery, only use the detachable power supply provided with this appliance. If the appliance is marked $\text{D-}\boxed{492}\text{-C}$, only use Braun power supplies coded 492-XXXX.

SAVE THESE INSTRUCTIONS

Our products are engineered to meet the highest standards of quality, functionality and design. We hope you thoroughly enjoy using your Braun Silk-épil 9. Please read the use instructions carefully before using the appliance and keep them for future reference.

Braun Silk-épil 9 has been designed to make the removal of unwanted hair as efficient, gentle and easy as possible. The extra wide epilation head removes the shortest hair (0.5 mm / 0.02 in) from the root, leaving your skin smooth for weeks.

Important

- For hygienic reasons, do not share this appliance with other persons.
- When switched on, the appliance must never come in contact with the hair on your head, eyelashes, ribbons, etc. to prevent any danger of injury as well as to prevent blockage or damage to the appliance.

Description

- 1a High frequency massage cap
- 1b Skin contact cap
- 2 Extra wide epilation head
- 3 SensoSmart™ light
- 4 Switch with lock keys (4a)
- 5 Charging light
- 6 Release button
- 7 Special cord set
- 8 Facial cap*
- 9 Shaver head with trimmer cap

* not with all models

Charging

Using the special cord set (7) connect the appliance to an electrical outlet and charge it for 2 hours.

Charging light (5)

Flashing green: charging

Green: fully charged

Yellow: 15 minutes charge left

Flashing yellow: 5 minutes charge left

- Once fully charged, use the appliance cordless. Operation time is 50 minutes when it is used within 24 hours after charging. Recharge it when the yellow light comes on or when the motor has stopped completely. For best performance, always use a fully charged appliance.
- Wet usage might reduce the operation time. We recommend that you recharge the appliance after each use.
- The best temperature range for charging, using and storing the appliance is between 59 °F and 95 °F. In case the temperature is far beyond this range, the charging time might be longer whereas the cordless operation time might be reduced.

At the end of its lifetime, the rechargeable battery can be replaced at an authorized Braun Service Center.

How to operate the appliance

Press one of the lock keys (4a) and turn the switch (4) clockwise to position «I» or «II». The SensoSmart™ light (3) shines as long as the appliance is switched on, thus providing good visibility of fine hairs. When you apply too much pressure, the SensoSmart™ light signals red.

To remove the epilation head (2), press the release button (6).

To change caps, press their lateral ribs and pull off.

A Epilation

Epilation tips

If you have not used an epilator before, or if you have not epilated for a longer period of time, it may take a short time for your skin to adapt to epilation. The discomfort experienced in the beginning will decrease considerably with repeated use as the skin adapts to the process. When epilating for the first time, it is advisable to epilate in the evening, so that any possible reddening can

disappear overnight. To relax the skin we recommend applying a moisture cream after epilation.

Epilation is easier and more comfortable when the hair is between 2 and 5 mm (0.02 – 0.2 in). If hairs are longer, we recommend that you shave first and epilate the shorter, re-growing hairs after 1 or 2 weeks. Alternatively, you can trim the hairs to 5 mm length.

Fine, regrowing hairs might not grow up to the skin surface. The regular use of massage sponges (e.g. after showering) or exfoliation peelings helps to prevent in-grown hair as the gentle scrubbing action removes the upper skin layer and fine hair can get through to the skin surface.

Dry usage: Your skin must be dry and free from grease or cream.

Wet usage: The appliance can be used on wet skin, even under running water. Make sure that the skin is very moist in order to achieve optimum gliding conditions for the appliance.

How to epilate

Make sure that the epilation head (2) is clean and provided with a cap (1a or 1b).

- 1 Select speed «I» for a gentle epilation, speed «II» for an efficient epilation.
- 2 Always stretch your skin when epilating. Make sure that the epilation area is in close contact with your skin.

Guide the appliance in a slow, continuous movement without pressure against the hair growth, in the direction of the switch. As hair can grow in different directions, it may also be helpful to guide the appliance in different directions to achieve optimal results. The massage cap (1a) ensures best skin comfort during epilation. If you are used to the sensation of epilation, you may replace the massage

cap with the skin contact cap (1b) which provides a closer skin contact and an improved adaptation to all body areas. Whenever the SensoSmart™ light shines red, this is to remind you not to press too hard.

3 Leg epilation

Epilate your legs from the lower leg in an upward direction. When epilating behind the knee, keep the leg stretched out straight.

4 Underarm and bikini line epilation

In sensitive areas, we recommend using the skin contact cap (1b). Please be aware that especially at the beginning, these areas are particularly pain-sensitive. Therefore, we recommend that you select speed setting «I» for the first few times. With repeated usage the pain sensation will diminish. Before epilating, thoroughly clean the respective area to remove residues (like deodorant). When epilating the underarm, keep your arm raised up so that the skin is stretched and guide the appliance in different directions. As skin may be more sensitive directly after epilation, avoid using irritating substances such as deodorants with alcohol.

5 Facial epilation

For removing any unwanted hair from the face, use the epilation head (2) with the (8) facial cap attached. For the first few usages, we recommend that you select speed setting «I» in order to get used to the epilation sensation in those sensitive areas.

Prior to epilation, we recommend cleaning the skin with alcohol to promote good hygiene. When epilating the face, stretch the skin with one hand and slowly guide the epilator with your other hand the direction of the switch.

6 Cleaning the epilation head

Regular cleaning ensures better performance.

a Brush cleaning:

Remove the cap and brush it out.

Thoroughly clean the epilator head from the rear side with the brush dipped into alcohol. While doing so, turn the tweezer element manually. This cleaning method ensures best hygienic conditions for the epilation head.

b Cleaning under running water:

After each wet usage, clean the appliance under running water. Remove the cap. Hold the appliance with the epilation head under hot running water. Then press the release button (6) to remove the epilation head. Thoroughly shake both, the epilation head and the appliance to make sure that remaining water can drip out. Leave both parts to dry. Before reattaching, make sure that they are completely dry.

General information on epilation




All methods of hair removal from the root can lead to in-grown hair and irritation (e.g. itching, discomfort and reddening of the skin) depending on the condition of the skin and hair. This is a normal reaction and should quickly disappear, but may be stronger when you are removing hair from the root for the first few times or if you have sensitive skin. If, after 36 hours, the skin still shows irritation, we recommend that you contact your physician. In general, the skin reaction and the sensation of pain tend to diminish considerably with the repeated use of Silk-épil.

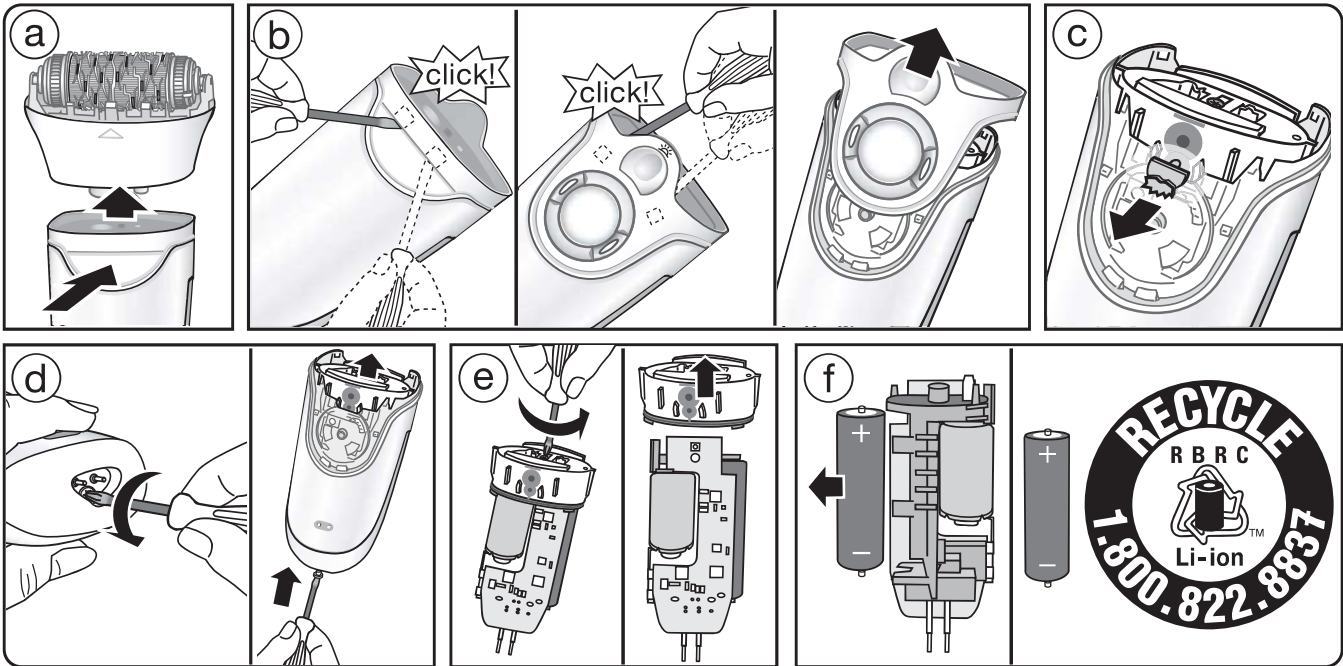
In some cases inflammation of the skin could occur when bacteria penetrate the skin (e.g. when sliding the appliance over the skin). Thorough cleaning of the epilation head before each use will minimize the risk of infection. If you have any doubts about using this appliance, please consult your physician. In the following cases, this appliance should only be used after prior consultation with a physician: eczema, wounds, inflamed skin reactions such as

folliculitis (purulent hair follicles), varicose veins, around moles, reduced immunity of the skin, e.g. diabetes mellitus, during pregnancy, Raynaud's disease, haemophilia, *Candida* or immune deficiency.

B How to use the shaver head

The shaver head (9) is designed for a fast and close shave of legs, underarms and bikini line, contour trimming and cutting hair to 5 mm length. With the shaver head attached, use the appliance only on dry skin and with speed setting «II».

- a Shaving: select «».
- b Contour trimming: select «».
- c Trimming hair to 5 mm length: select «» and put on the trimmer cap (I).
- d Cleaning: Do not clean the shaver foil (II) with the brush as this may damage the foil.
- e The shaving parts need to be lubricated regularly every 3 months.
- f Replace the foil frame (II) and cutter block (III) when you notice a reduced shaving performance. Replacements parts can be obtained from your retailer, Braun Customer Service Centers or via www.service.braun.com. Do not shave with a damaged foil.



Battery removal

This appliance contains a rechargeable battery. Before disposing of the appliance disassemble the housing as shown, remove the rechargeable battery and recycle or dispose of properly, according to local guidelines.

Caution: Disassembling the appliance will destroy it and invalidate the warranty.

C Facial cleansing brush

The facial cleansing brush is water-resistant and can be used in the shower.

Warning

Avoid direct contact with eyes and hair-line. If skin irritation or redness occurs, discontinue use.

Batteries may leak if empty or not used for a long time. Remove exhausted batteries in a timely manner and avoid skin contact while handling leaking batteries. Dispose of batteries safely.

Non rechargeable batteries are not to be recharged. The terminals must not be short-circuited. Rechargeable batteries are to be removed from the appliance before being charged.

Do not mix old and new or different type batteries.

Description

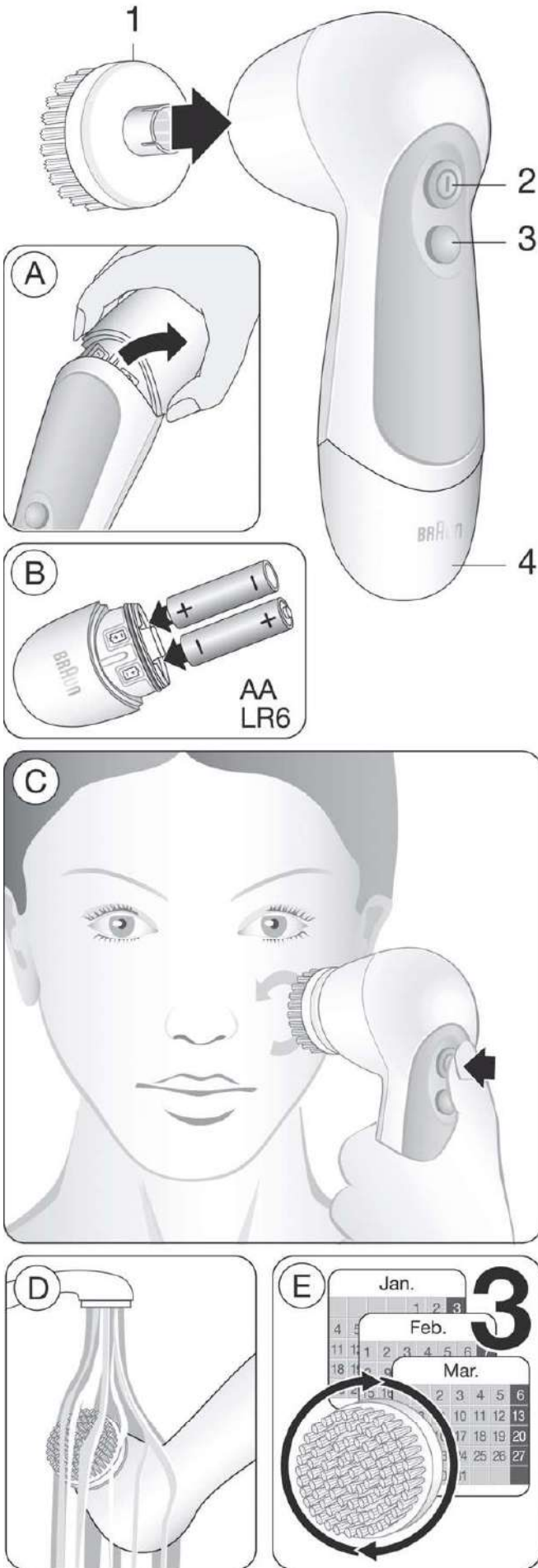
- 1 Replaceable brush head
- 2 On/off switch
- 3 2-speed control switch
- 4 Battery compartment

Inserting batteries

Pull firmly to remove the battery compartment (A). Insert two AA alkaline batteries (1.5 V). Observe correct polarity by aligning +/- symbols (B). Replace the battery compartment.

How to use the facial cleansing brush

- Click the brush head (1) onto the connection pin until it locks into position.
- Moisten facial skin and brush head lightly with water. For best results, you may dispense an exfoliating cleanser in your hand and massage it over your face.
- Press the on/off switch (2) to turn on the brush. You can change speeds by pressing the 2-speed control switch (3).
- Gently brush your face with circular movements for approximately one minute. Avoid the eye area and hairline. After use, turn off the brush.
- Rinse face with water. You may wish to apply a moisturizer. Rinse the brush with



warm water. For best results, replace the brush head every 3 months (E) or sooner if bristles become deformed. Brush head refills (ref. no. 89 Facial Spa) are available from your retailer, Braun Service Centers or via www.braun.com.

Disposal

These products contain batteries and recyclable electronic waste. To protect the environment, do not discard them with the household waste, but dispose of them at appropriate local collection points.



Subject to change without notice.

FOR USA ONLY

1 year limited warranty

Braun warrants this product to be free of defects in material and workmanship for a period of one year from the date of original purchase.

If the appliance exhibits such a defect, Braun will, at its option, either repair or replace it for the consumer without charge.

Please call 1-800-Braun 11 (800-272-8611) to be referred to the authorized Braun Service Center closest to you.

This warranty does not cover damage resulting from accident, misuse, abuse, dirt, water, tampering, unreasonable use, servicing performed or attempted by unauthorized service agencies or failure to provide reasonable and necessary maintenance.

ALL IMPLIED WARRANTIES INCLUDING ANY IMPLIED WARRANTY OF MERCHANTABILITY OR FITNESS FOR ANY PARTICULAR PURPOSE ARE LIMITED IN DURATION TO 1 YEAR FROM DATE OF ORIGINAL PURCHASE. IN NO EVENT WILL BRAUN INC. BE RESPONSIBLE FOR CONSEQUENTIAL DAMAGES RESULTING FROM THE USE OF THIS PRODUCT.

Some states do not allow the exclusion or limitation of incidental or consequential damages, so the above limitation or exclusion may not apply to you.

This warranty gives you specific legal rights, and you may also have other legal rights which vary from state to state.

FOR CANADA ONLY

1 year warranty

In the event a Braun Silk-épil fails to function within 1 year from date of purchase, because of defects in material or workmanship, and the consumer returns the unit to an authorized service center, Braun Canada, will, at its option, either repair or replace the unit without additional charge to the consumer.

This guarantee does not cover any product, which has been damaged by dropping, tampering, wrong current, servicing performed or attempted by unauthorized service agencies, misuse or abuse.

Exclusion of Warranties: The foregoing warranty is the sole warranty offered by Braun Canada hereby disclaims any implied warranty or merchantability or fitness for any particular purpose. In no event will Braun Canada be responsible for consequential damages resulting from the use of this product.