



BARKBATH™

DUAL USE

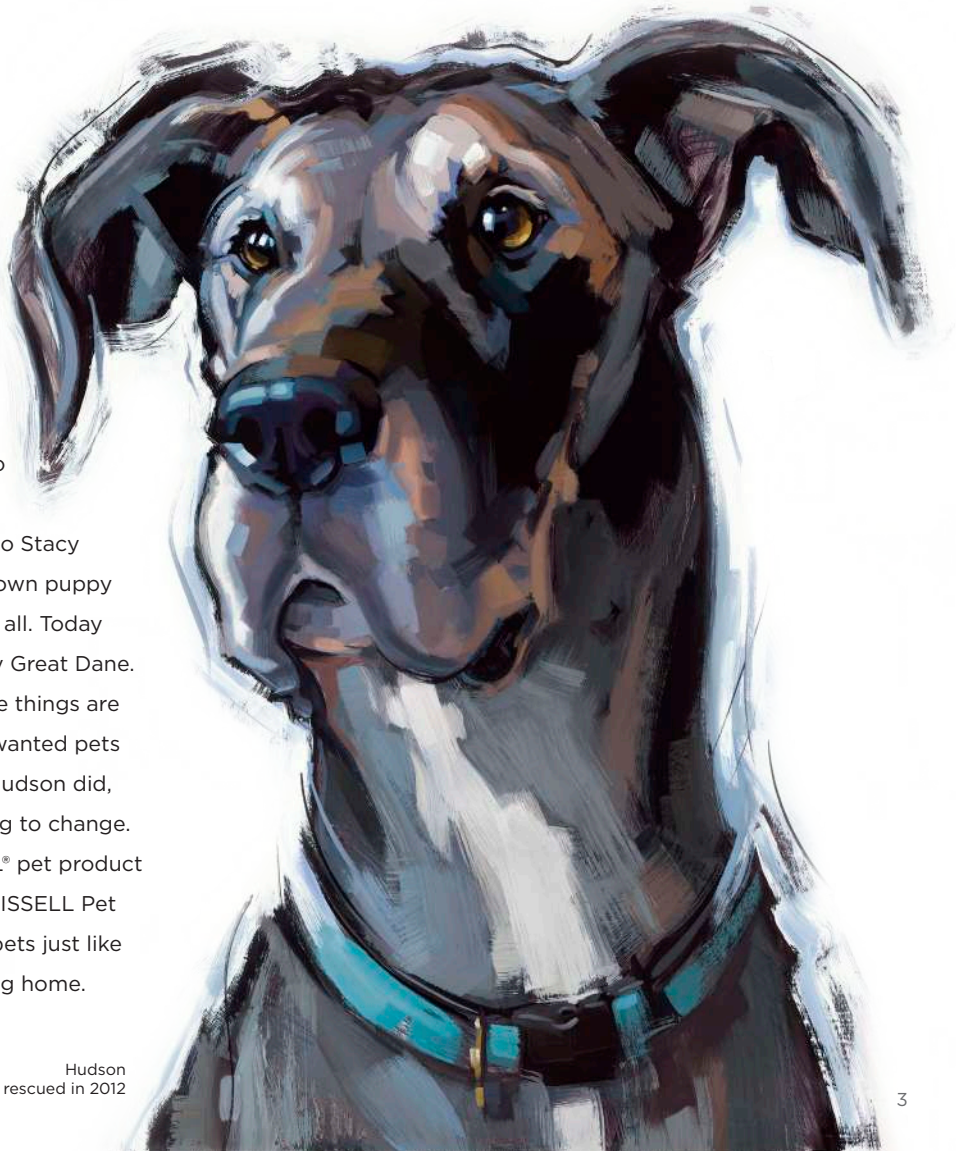
Series 2592



Hudson's Story

As a young pup, Hudson was discarded from his litter due to his grey coat and black spots. His appearance didn't matter to Stacy who fell in love with his big brown puppy eyes at the rescue - spots and all. Today Hudson is a happy and healthy Great Dane. He is a "leaner" and his favorite things are hugs and snuggles. Not all unwanted pets receive a second chance like Hudson did, but that is what we are working to change. When you purchase a BISSELL® pet product and activate the donation to BISSELL Pet Foundation®, you are helping pets just like Hudson find a caring and loving home.

Hudson
rescued in 2012



IMPORTANT SAFETY INSTRUCTIONS

READ ALL INSTRUCTIONS BEFORE USING YOUR PORTABLE DOG BATH SYSTEM.

When using an electrical appliance, basic precautions should be observed, including the following:

WARNING

TO REDUCE THE RISK OF FIRE, ELECTRIC SHOCK, OR INJURY:

- » Use only warm tap water. Do not use heated water.
- » Connect to a properly grounded outlet only. See grounding instructions. Do not modify the 3-prong grounded plug.
- » Do not leave appliance when it is plugged in. Unplug from outlet when not in use and before servicing.
- » Do not expose to rain. Store indoors.
- » Do not allow to be used as a toy. Close attention is necessary when used by or near children.
- » Do not use for any purpose other than described in this user guide. Use only manufacturer's recommended attachments.
- » Do not use with damaged cord or plug. If appliance is not working as it should, has been dropped, damaged, left outdoors, or dropped into water, have it repaired at an authorized service center.
- » Do not pull or carry by cord, use cord as a handle, close a door on cord, or pull cord around sharp edges or corners. Do not run appliance over cord. Keep cord away from heated surfaces.
- » Do not unplug by pulling on cord. To unplug, grasp the plug, not the cord.
- » Do not handle plug or appliance with wet hands.
- » Do not put any object into openings. Do not use with any opening blocked; keep openings free of dust, lint, hair, and anything that may reduce air flow.
- » Keep hair, loose clothing, fingers, and all parts of body away from openings and moving parts.
- » Turn off all controls before plugging or unplugging appliance.
- » Do not use appliance in an enclosed space filled with vapors given off by oil-base paint, paint thinner, some moth-proofing substances, flammable dust, or other explosive or toxic vapors.
- » Keep appliance on a level surface.
- » Do not carry the appliance while in use.
- » Do not immerse appliance in water or place in area where splashing may occur.
- » Liquid must not be directed towards equipment containing electrical components.
- » Use extra care when cleaning on stairs.
- » Always install float before any wet pick-up operation.
- » Do not use to pick up flammable or combustible materials (lighter fluid, gasoline, kerosine, etc.) or use in areas where that may be present.
- » Do not use to pick up toxic materials (chlorine bleach, ammonia, drain cleaner, etc.).
- » Do not pick up anything that is burning or smoking such as cigarettes, matches, or hot ashes.
- » Use only BISSELL® cleaning products intended for use with this appliance to prevent internal component damage. See the Cleaning Fluid section of this guide.
- » Children should be supervised to ensure that they do not play with appliance.
- » Plastic film can be dangerous. To avoid danger of suffocation, keep away from children.

SAVE THESE INSTRUCTIONS FOR FUTURE USE

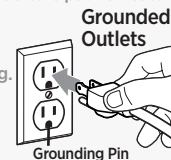
This model is for household use only. Commercial use of this unit voids the manufacturer's warranty.

WARNING

Improper connection of the equipment-grounding conductor can result in a risk of electrical shock. Check with a qualified electrician or service person if you aren't sure if the outlet is properly grounded. **DO NOT MODIFY THE PLUG.** If it will not fit the outlet, have a proper outlet installed by a qualified electrician. This appliance is designed for use on a nominal 120-volt circuit, and has a grounding attachment plug that looks like the plug in the illustration. Make certain that the appliance is connected to an outlet having the same configuration as the plug. No plug adapter should be used with this appliance.

GROUNDING INSTRUCTIONS

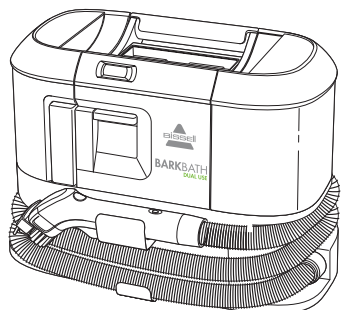
This appliance must be connected to a grounded wiring system. If it should malfunction or break down, grounding provides a safe path of least resistance for electrical current, reducing the risk of electrical shock. The cord for this appliance has an equipment grounding conductor and a grounding plug. It must only be plugged into an outlet that is properly installed and grounded in accordance with all local codes and ordinances.



WARRANTY

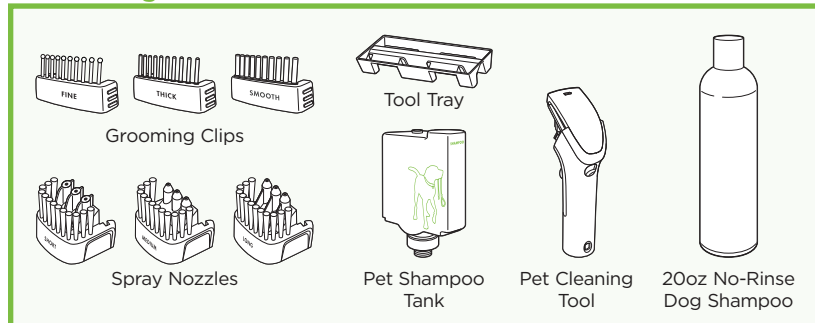
1-Year limited warranty, may vary by state. Visit support.BISSELL.com or call 1-800-237-7691 for complete warranty information.

What's in the Box?



BARKBATH™ Unit

Pet Cleaning



Grooming Clips

Spray Nozzles

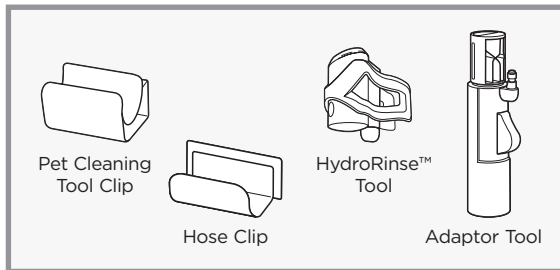
Tool Tray

Pet Shampoo Tank

Pet Cleaning Tool

20oz No-Rinse Dog Shampoo

Other Accessories



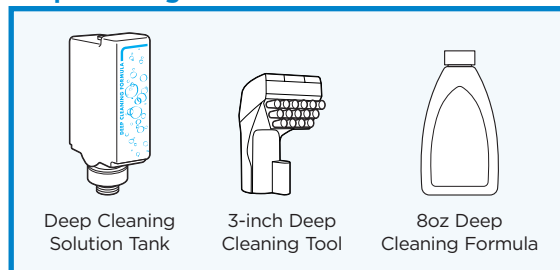
Pet Cleaning Tool Clip

Hose Clip

HydroRinse™ Tool

Adaptor Tool

Deep Cleaning



Deep Cleaning Solution Tank

3-inch Deep Cleaning Tool

8oz Deep Cleaning Formula

Safety Instructions 4

Warranty 4

What's in the Box 5

Getting Started 6

Acclimate Your Dog 7

Bathing Your Dog 9-11

Cleaning Your Carpet 13

Cleaning Your Product . . . 14-15

Maintenance & Care 16

Storage 17

Dog Coat Guide 18-19

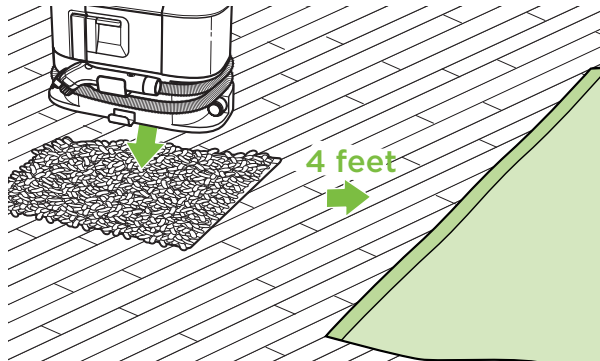
Troubleshooting 20

Product Registration 22

Wait! Before you get started...

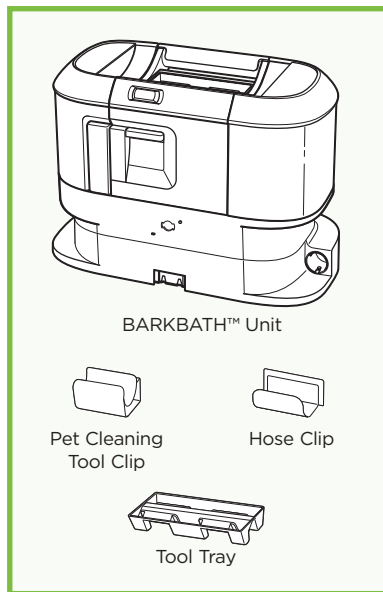
HELPFUL TIPS:

- Place unit on microfiber mat at least 4 feet away from bathing location to reduce sound.
- Lay down a separate towel where you will be bathing your dog, preferably in an area where your dog feels safe.
- Always use a **BISSELL®** No-Rinse Dog Shampoo.
- Tighten your clean & dirty water tank before use.

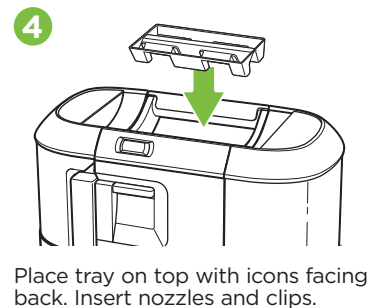
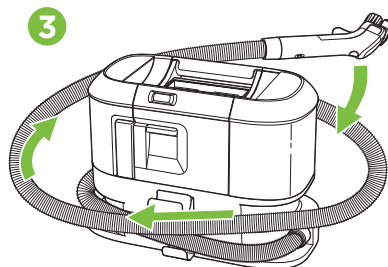
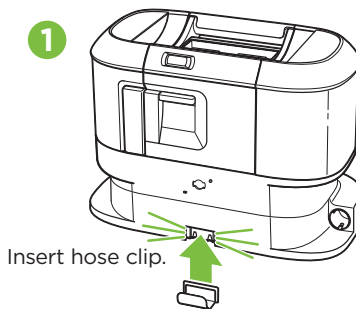


ASSEMBLY

You will need the following:



Let's get started!



Noise-Sensitive or Anxious Dog?

Some dogs are sensitive to loud noises, fans, vacuums or other loud appliances. Here are some quick training steps to help your dog have a great experience with this new bathing method.

TRAINING STEPS:

Step 1

- Place the unit in a room where you plan to bathe your dog. With the unit turned off, allow your dog to become familiar with it.
- With the unit turned off, have your dog walk over to the unit and use the spray nozzle as a "comb" to brush your dog.
- Praise your dog and offer a treat.

Step 2

- With your dog out of the room, turn the unit on. Leave the unit on and offer your dog a treat.
- Turn the unit off.
- Repeat the last two steps of Step 1.

Step 3

- Turn the unit on, have your dog enter the room and give the dog a treat.
- With the unit on, and without pulling the trigger to release water, "comb" your dog's fur with the bathing tool.
- Turn the unit off and offer a treat.

Step 4

- Turn the unit on and have your dog enter the room.
- Comb a small section of your dog's fur with the unit on and pull the trigger in quick, short bursts to acclimate your dog to feeling the shampoo on their skin.
- Once your dog is comfortable with the unit, you're now ready to enjoy bathing your dog with the BARKBATH™.





Cleaning Formulas

Find more formulas at [BISSELL.com](https://www.bissell.com)

No-Rinse Dog Shampoos



BISSELL® Odor & Skunk
No-Rinse Shampoo



BISSELL Free & Clear
No-Rinse Shampoo



BISSELL Clean & Fresh
No-Rinse Shampoo



BISSELL Vitamin E
No-Rinse Shampoo



BISSELL Oatmeal
No-Rinse Shampoo



BISSELL Honey Blossom
No-Rinse Shampoo



BISSELL White Tea &
Aloe No-Rinse Shampoo

Deep Cleaning Formulas



BISSELL Professional
Spot & Stain + Oxy



BISSELL Spot & Stain
with Febreze®



BISSELL Pet Stain
& Odor



BISSELL Spot & Stain

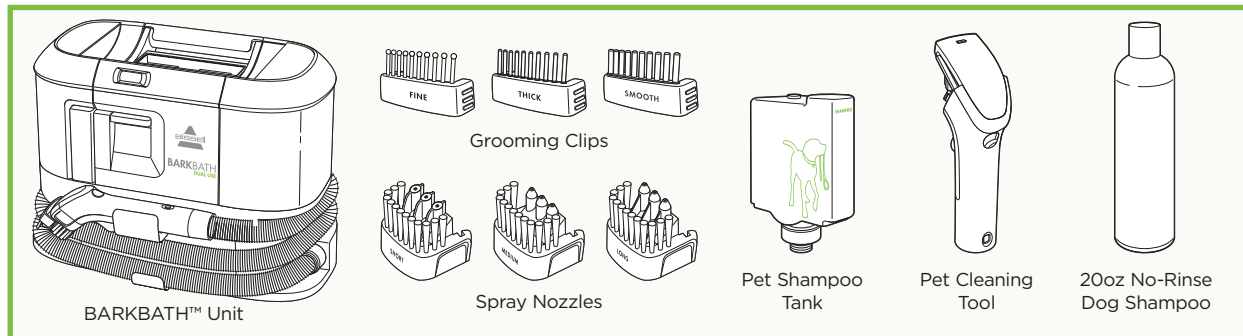


WARNING

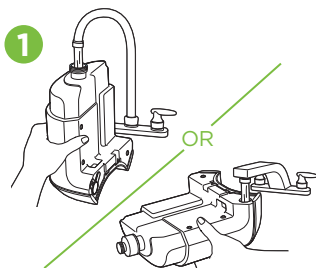
To reduce the risk of fire and electric shock due to internal component damage, use only BISSELL cleaning formula intended for use with this machine.

BATHING YOUR DOG

You will need the following:



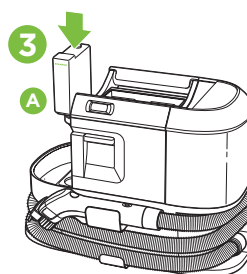
Let's get started!



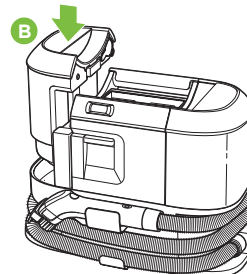
Fill your clean water tank with warm water.



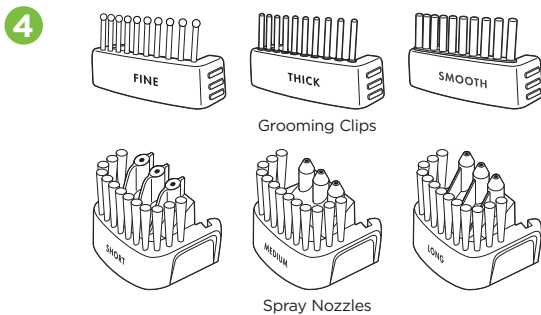
Add **BISSELL®** No-Rinse Dog Shampoo to pet shampoo tank.



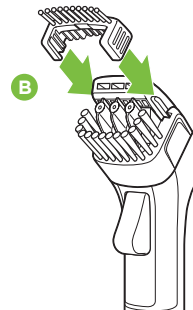
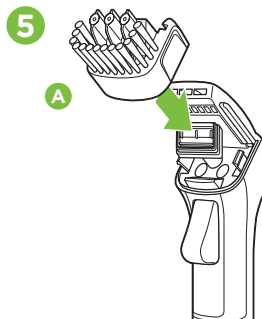
Replace pet shampoo tank.



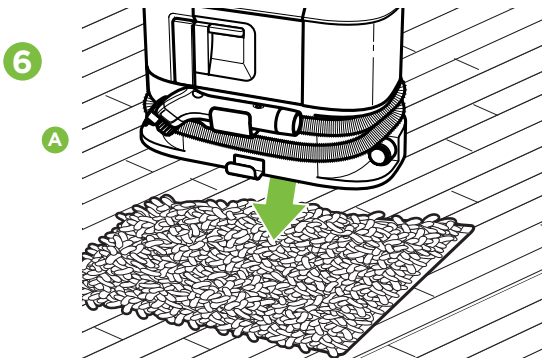
Replace the clean water tank.



Find a spray nozzle & grooming clip that works best for your dog.

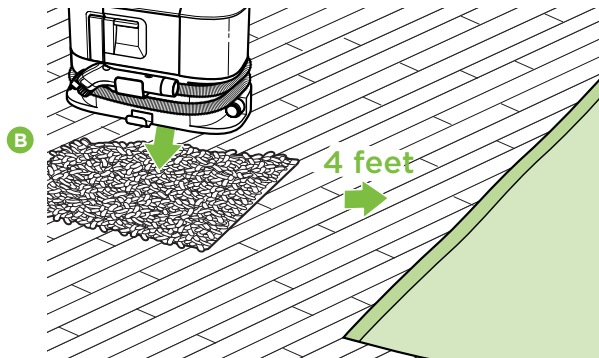


Attach your spray nozzle & grooming clip to the pet cleaning tool.



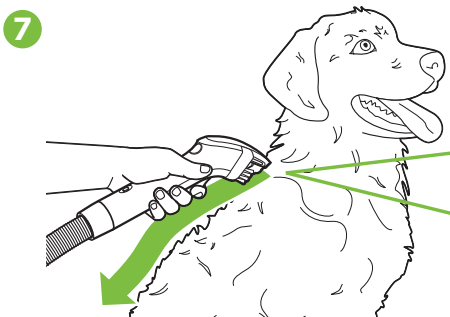
Place microfiber mat on floor with BARKBATH™ on top.

This will help dampen the sound for your dog.



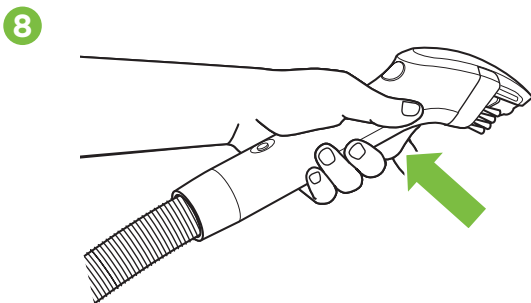
Place another towel on ground for your dog.

Place towel a few feet away from your BARKBATH to help further reduce sound.

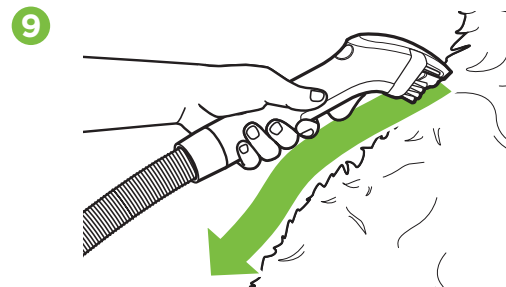


Place nozzle flush against your dog's body. Pull spray trigger and groom your dog in a downward motion. Release the trigger and lift away after each pass. Continue until your dog is clean.

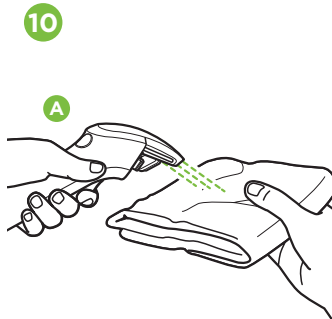
Don't forget the BARKBATH cleans from the skin up.



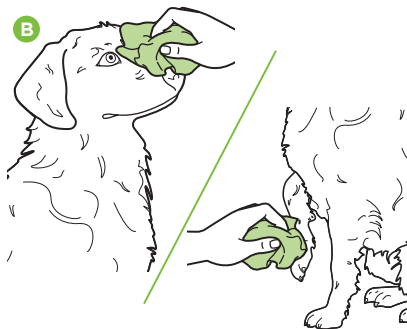
Remove finger from trigger.



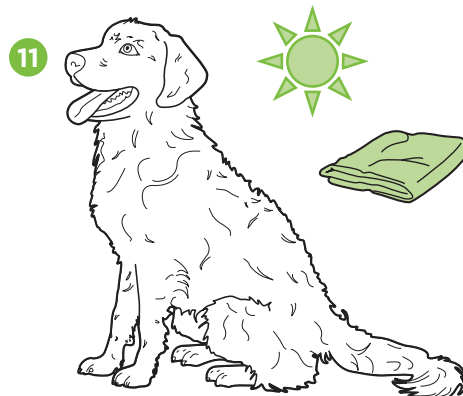
Make a few drying passes on your dog to remove excess water.



Spray a clean cloth.



Wipe your dogs face and paws after you are finished with the BARKBATH™.

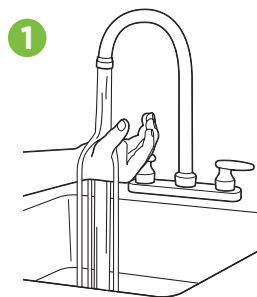


Once finished, your dog may still be a little damp.

Helpful tips...

Here are some helpful tips to know about your BARKBATH unit.

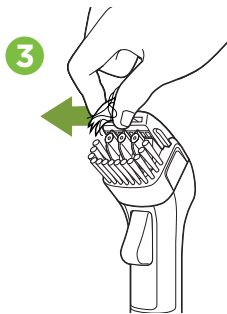
For a complete Dog Coat Guide see pages 18-19.



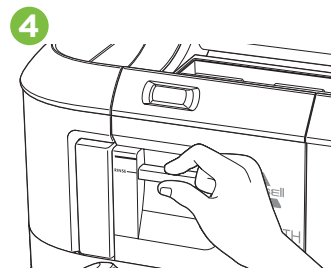
Make sure to test the temperature of the water before using the BARKBATH on your dog.



To prime your unit, spray the microfiber pad.



Remember to wipe the hair off grooming clip & spray nozzle throughout bathing your dog.



If you want to use only water, flip the switch on your BARKBATH to rinse mode.

NOTE Always use genuine BISSELL® No-Rinse Dog Shampoo. Other shampoos may harm the machine and will void the warranty.

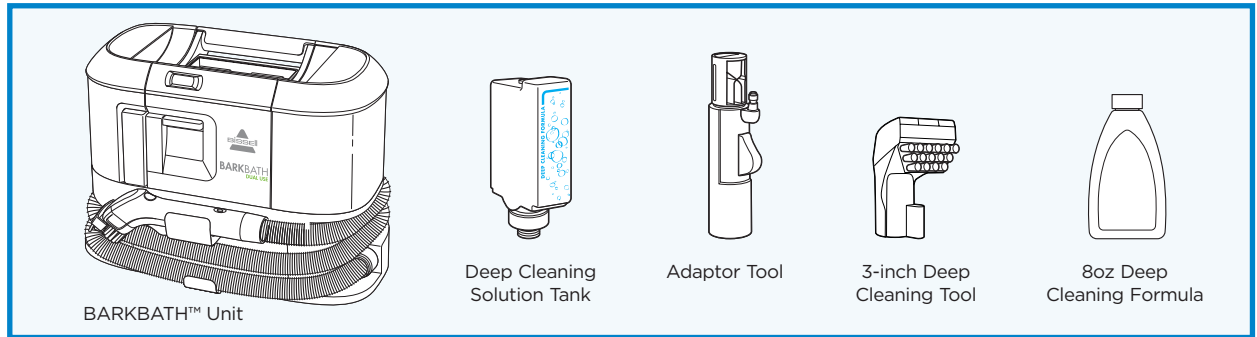


For more tips and videos, visit us online at www.BISSELL.com/videos.

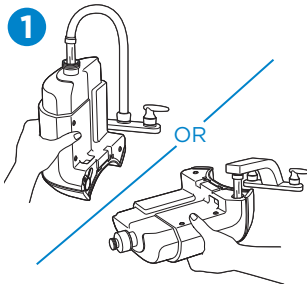


CLEANING YOUR CARPET

You will need the following:



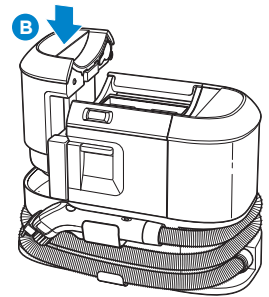
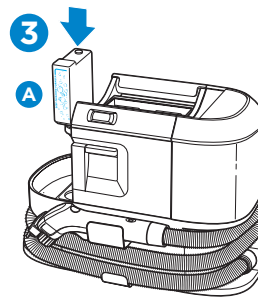
Let's get started!



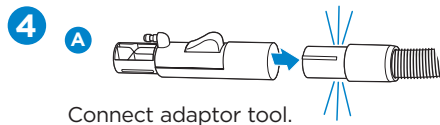
Fill your clean water tank with warm water.



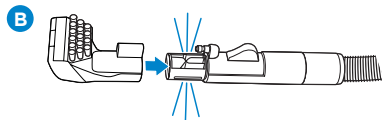
Add deep cleaning formula to solution tank.



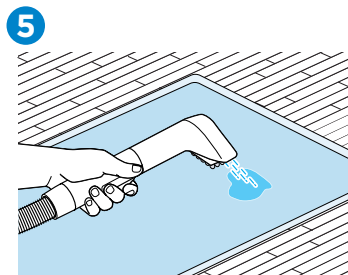
Place deep cleaning solution tank & clean water tank back in your BARKBATH.



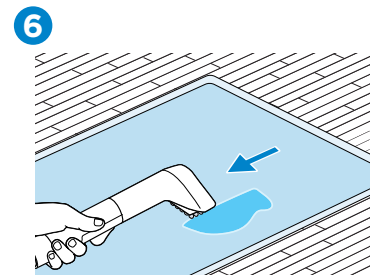
Connect adaptor tool.



Connect deep cleaning tool to adaptor tool.



Hold trigger to spray dirty area.

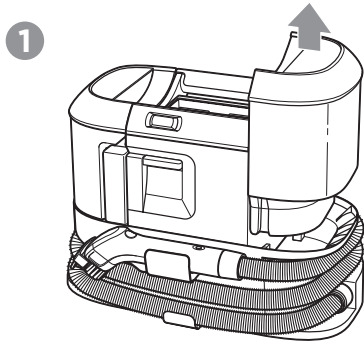


Push down and pull back to clean the mess.

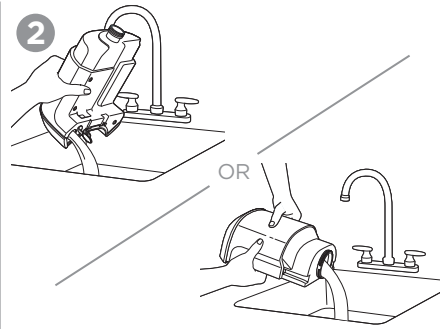
CLEANING YOUR PRODUCT

⚠ CAUTION For your safety, always turn OFF and unplug your BARKBATH™ before cleaning or servicing.

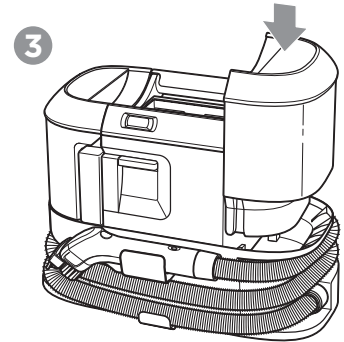
Emptying Dirty Water Tank:



Remove the dirty water tank.



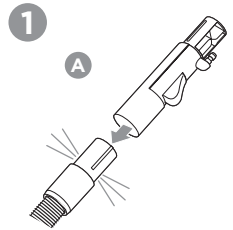
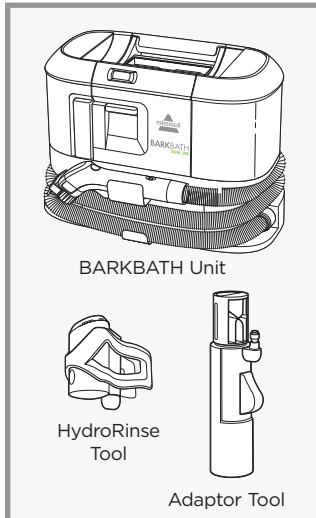
Pour out dirty water.



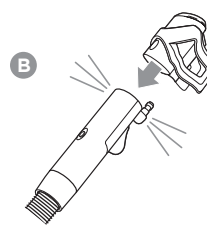
Place the empty tank back in unit.

Cleaning with HydroRinse™ Tool:

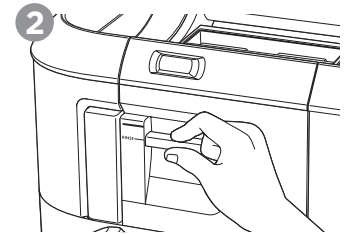
You will need the following:



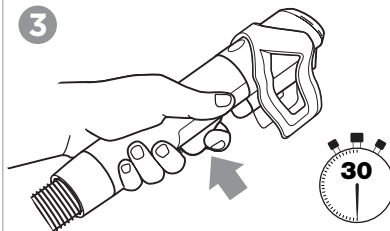
Attach adaptor tool.



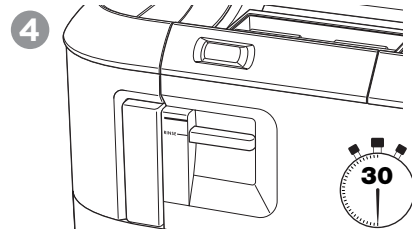
Attach HydroRinse tool.



Switch unit to rinse mode.

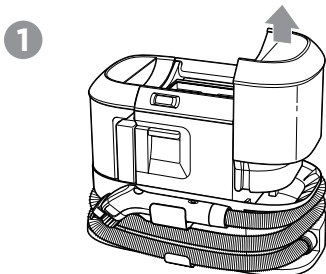


Press and hold trigger for 30 seconds.

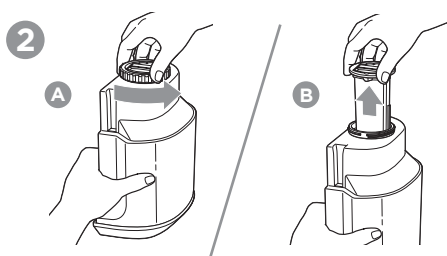


Release trigger and let machine run for an additional 30 seconds to clear water in hose.

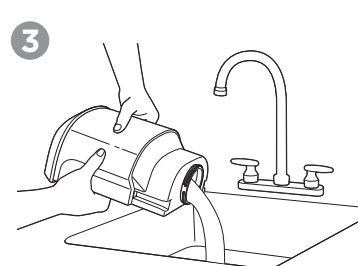
Cleaning Dirty Water Tank:



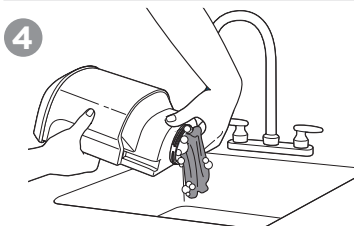
Remove the dirty water tank.



Twist dirty tank cap and remove separator stack.

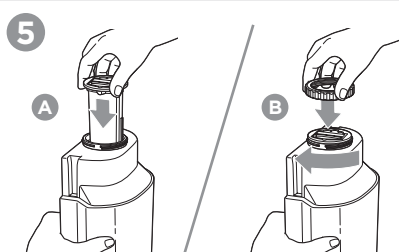


Pour out dirty water.

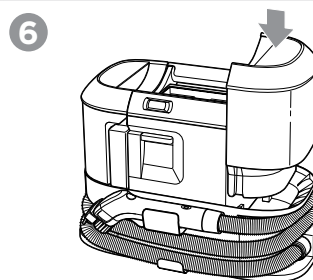


Handwash your dirty tank with mild dish soap. Dry for 24 hours before you reassemble.

This tank is not dishwasher safe.



Place separator stack and cap onto dirty tank and firmly tighten.



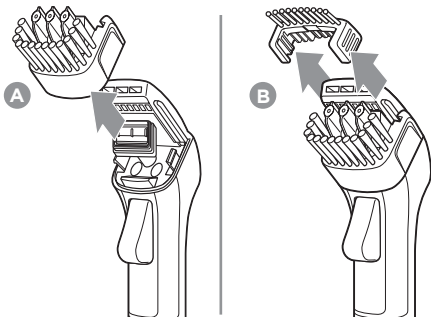
Place dirty tank onto unit.



MAINTENANCE & CARE

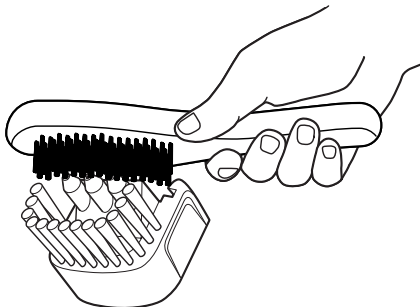
Cleaning your Pet Tool:

1



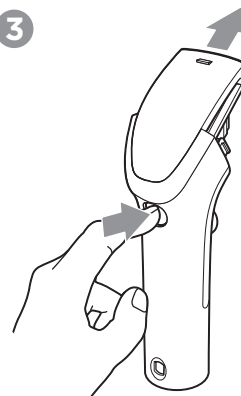
Remove your spray nozzle & grooming clip from the pet cleaning tool.

2



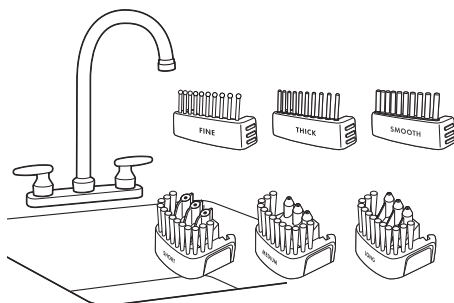
To remove left behind hair, clean your tools with a brush.

3



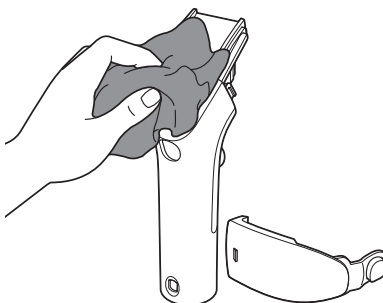
Remove the lens off of your pet cleaning tool. Clean and remove fur or hair if necessary.

4



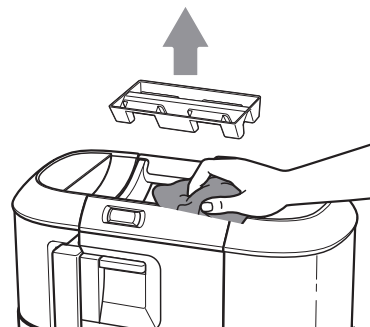
To clean all of your pet tools, use warm water and mild dish soap.

5



Dry your pet tool with a clean cloth.

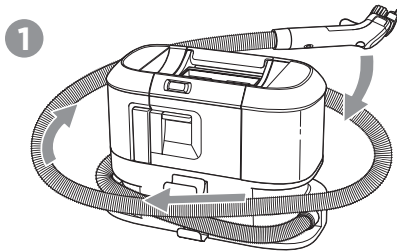
6



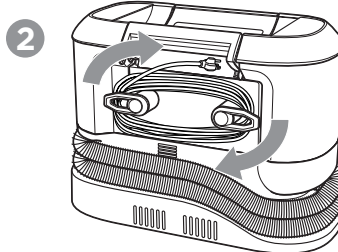
Wipe under your pet cleaning tool tray with a dry cloth.



STORAGE



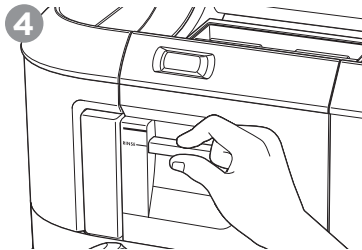
Wrap hose around unit.



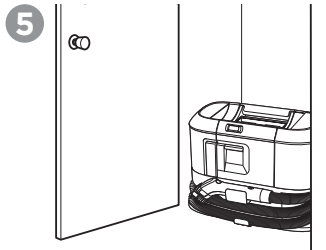
Wrap the cord around clips



Place extra tools and accessories in storage bag.



Leave unit in rinse mode for storage.



Store unit in cool dry place.

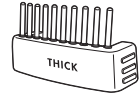
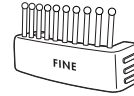
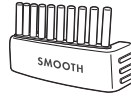
NOTICE To reduce the risk of a leaking condition, do not store where freezing may occur. Damage to internal components may result.

DOG COAT GUIDE

Need some help selecting a spray nozzle & grooming clip for your dog? Use our guide below.

Dog Fur/Hair Type	Popular Dog Breed Examples
Smooth	Bulldog, Terrier (Jack Russell, Fox, Manchester, Bull, Boston), Beagle, Boxer, Pug, Rottweiler, Pointer, Dachshund, Great Dane, Doberman Pinscher, Greyhound, Chihuahua, Vizslas
Wiry	Terriers (Border, Dandie, Irish, Scottish, Highland), Affenpinscher, Otterhound
Curly	Curly-Coated Retriever, Bishon Frise, American Water Spaniels, Poodle, Goldendoodle, Labradoodle
Silky	Terrier (Yorkshire, Silky), Irish Setter, Cocker Spaniel, Afghan Hound, Chinese Crested
Hypoallergenic	Terrier (Yorkshire, Welsh, Irish, Lakeland, Miniature Bull, Soft-Coated Wheaten), Cockapoo, Labradoodle, Poodle, Shih Tzu, Miniature Schnauzer, Brussels Griffon, Barbet, Basenji
Medium	Golden Retriever, German Shepard, Boarder Collie, Siberian Husky, Akita, Cavalier King Charles Spaniel, Corgi, Brittany, Saint Bernard, Australian Shepard
Double	Labrador Retriever, Golden Retriever, Siberian Husky, Mastiff, Samoyed, Malamute, German Shepard, Bernese Mountain Dog, Corgi, Pomeranian, Sheepdog (Shetland, Old English), Yorkshire Terrier, Keeshond, Newfoundland, Chow Chow
Flowing	Terrier (Yorkshire, Silky, Skye, Tibetan), Springer Spaniel, Shih Tzu, Maltese, Lhasa Apso, Afghan Hound

NOTE Try different combinations and find the best one that works for you and your dog. There might be different combinations for different parts of your dog.



Short	Medium	Long	Smooth	Fine	Thick
●	●		●	●	
●	●		●	●	●
●	●	●		●	●
●	●	●	●	●	●
●	●		●	●	●
●	●	●	●	●	●
●	●	●	●	●	●
●	●	●	●	●	●

● Most likely to work best for this dog fur/hair type. ● Likely to work well for this dog fur/hair type.

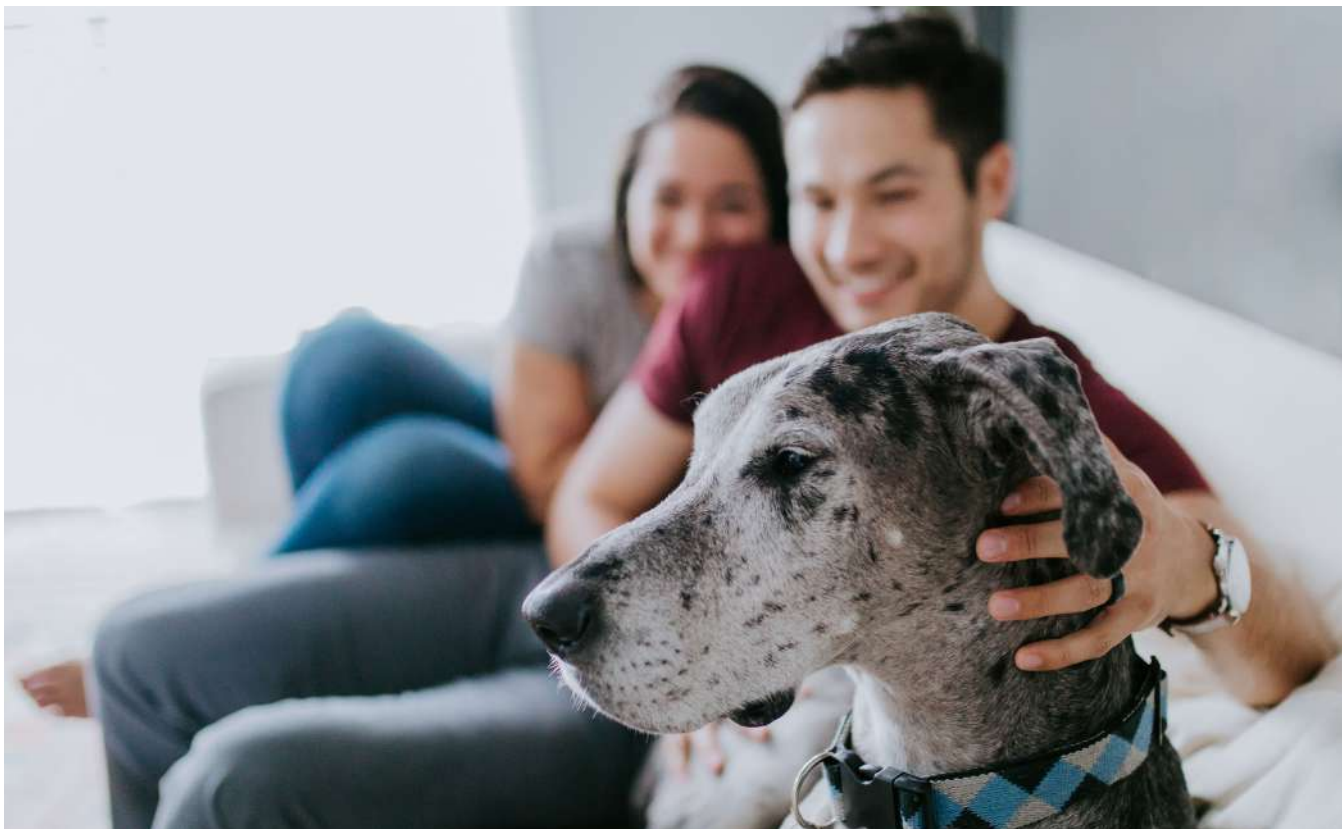
TROUBLESHOOTING



WARNING To reduce the risk of electric shock, turn power switch off and disconnect plug from electrical outlet before performing maintenance or troubleshooting checks.

Problem	Possible causes	Remedies
Reduced or no suction	Hair build-up on suction nozzle	Clean as needed while washing dog
	Tool is not firmly placed against dog's body	Firmly press tool against dog's body, and periodically let go of spray trigger to allow for drying strokes
	Area under dirty water tank has sand, hair, or debris	Remove dirty water tank and clean any sand or debris off inlet on the base of the machine and the gasket on the bottom of dirty water tank
	Dirty tank full or not seated properly	Empty tank and replace, snapping top lid into place
	Clog or build-up in hose	Suction hot water up to clear hose
	Loose hose connection	Ensure machine hose is locked in place into the bathing tool
Reduced spray or not spraying	Solution or water tank is empty	Check and refill both water and bathing tool solution tanks
	Spray tip clogged	Rinse tool with warm water and use soft bristle brush on spray tips
	Loose hose connection	Ensure machine hose is locked in place into the bathing tool. Hold trigger until water comes out
	Lost prime	Turn unit off; Refill the water tank (and shampoo tank if needed), turn unit on and hold the trigger until spray resumes
	Water has not reached the recovery tank	Suction water up until it appears in the recovery tank
Leaking	Dirty water tank gasket not in place or damaged	Place gasket in correctly (notched); If damaged, replace gasket
	Loose hose connection	Ensure machine hose is locked in place into the bathing tool; Hold trigger until water comes out
	Damage or torn hose	Have an authorized technician repair unit
	Bathing tool solution cap not in place	Make sure the solution cap on the bathing tool is in place with a gasket in the cap
	Clean water tank cap is not securely tightened	Remove clean water tank, unscrew cap, then place cap back on tank and tighten securely
	Water still remains bathing tool/hose	Similar to a garden hose, water may remain in the hose after unit is off
No power to unit	Outlet not working	Test outlet with a small appliance like a cell phone charger, and use another outlet if needed
	Fuse/breaker to outlet tripped	Reset the breaker
Dog still dirty or smells	Difficult Odor (ie. skunk)	Rewash with BISSELL® Odor & Skunk no-rinse shampoo or consult a professional for very difficult odors
Shampoo not foaming	Shampoo is designed to not be foamy	Continue using appropriate no rinse shampoo that is not foamy
Shampoo is not flowing	Not using a BISSELL no-rinse dog shampoo	Always use a BISSELL no-rinse dog shampoo
	Rinse/Shampoo switch not fully engaged	Make sure switch is securely selected to the desired function
	Lost prime	Turn unit off; Refill the water tank (and shampoo tank if needed), turn unit on and hold the trigger until spray resumes





We're Waggin' Our Tails!

Thanks to your purchase, BISSELL Pet Foundation® can help save more pets. Go to www.BISSELL.com/savepets to learn more and activate your product donation.

But wait there's more!

Join us online for a complete guide to your new purchase, including troubleshooting, product registration, parts and more. **Go to support.BISSELL.com**



REGISTER



INFO



VIDEOS



PARTS



SUPPORT

