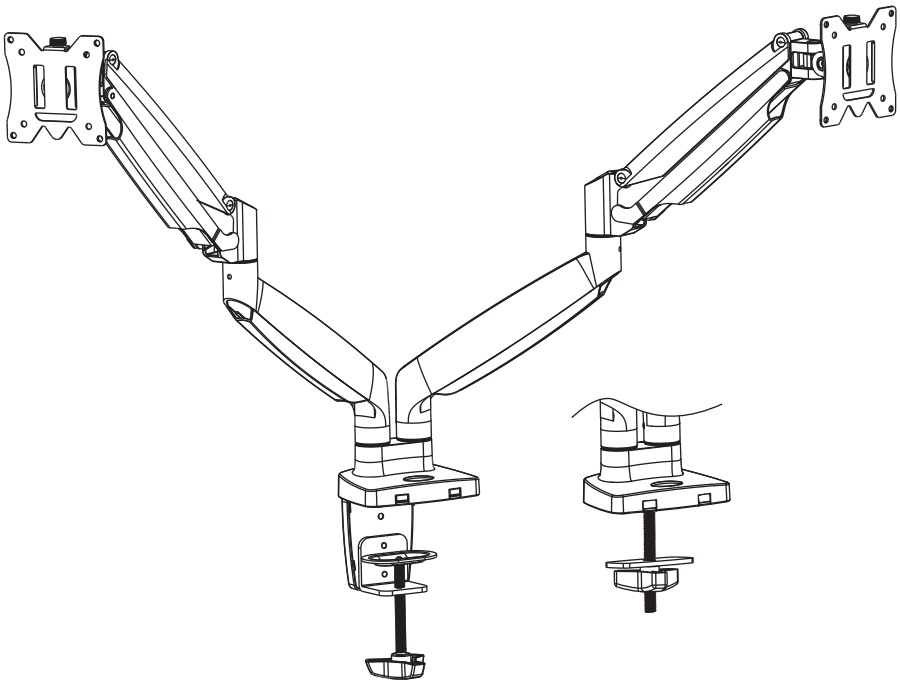


---

# Premium Dual Monitor Stand

## Instruction Manual



80002-MA01N-24-US3.0

---

If you have any questions, please feel free to contact Customer Service via Amazon before returning.

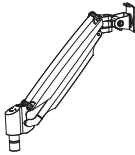
# **WARNING!**

If you have any confusion or are not quite sure about the installation, please do not hesitate to ask for our help.

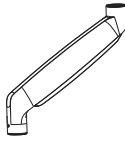
Before assembly, please check and make sure all necessary accessories are included and undamaged. Improper installation, such as using the product for monitors over its load capacity or for any purpose not explicitly specified, may cause damage or serious injury. We would not be liable for any damage or injury caused by improper mounting or inappropriate use.

The kit contains small items that could be choking hazards if swallowed. Please keep them OUT OF REACH OF CHILDREN UNDER 3 YEARS OLD. ADULT SUPERVISION IS REQUIRED.

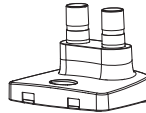
## PACKAGE CONTENTS



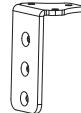
**A (x2)**  
Upper Arm



**B (x2)**  
Lower Arm



**C (x1)**  
Base



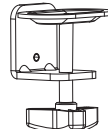
**D (x1)**  
Bracket



**E (x1)**  
Base Support Cover



**F (x2)**  
VESA Plate



**G (x1)**  
Clamp



**H (x1)**  
Carriage Bolt



**I (x1)**  
Grommet Base



**J (x1)**  
Support Plate



**K (x1)**  
Wingnut



**L (x5)**  
M6x10



**M (x4)**  
Pad



**N (x2)**  
Bolt



**O (x1)**  
3mm Allen Key



**P (x1)**  
4mm Allen Key



**Q (x1)**  
6mm Allen Key



**M-A (x8)**  
M4x12mm



**M-B (x8)**  
M4x25mm



**M-C (x8)**  
Spacer H10mm

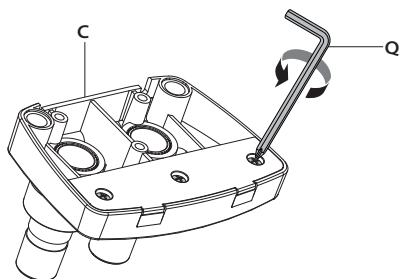
**NOTE:** Not all hardware included will be used.



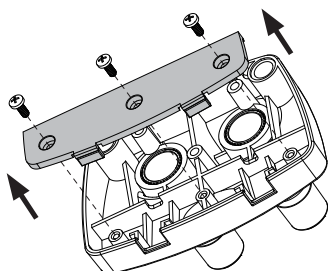
**DO NOT EXCEED WEIGHT CAPACITY.**

If you need to mount the USB, please follow the steps below first.

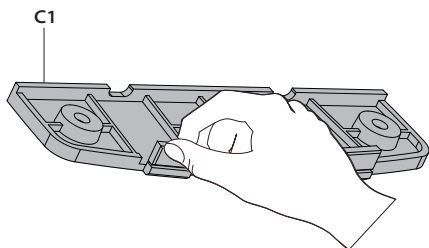
1



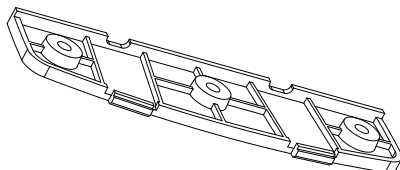
2



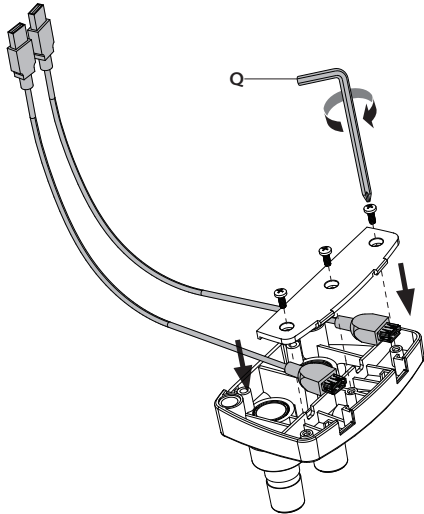
3



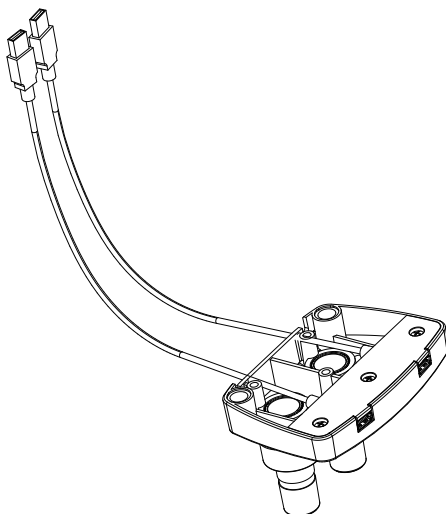
4



5



6

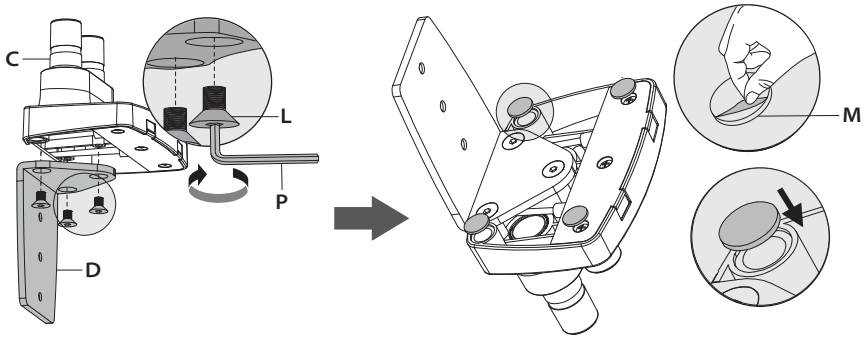


# ASSEMBLY STEPS

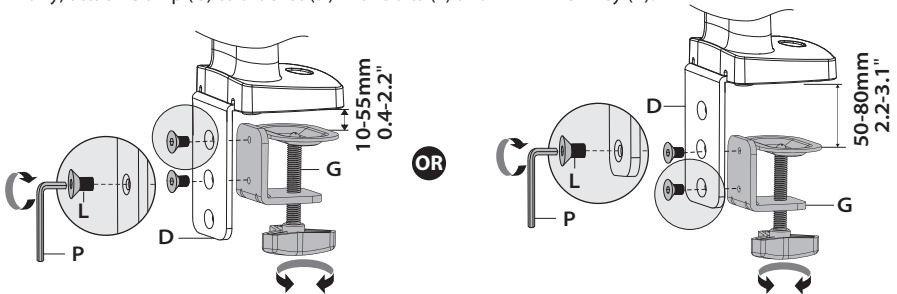
## STEP 1: Clamp Installation OR Grommet Base Installation

### OPTION A: Clamp Installation

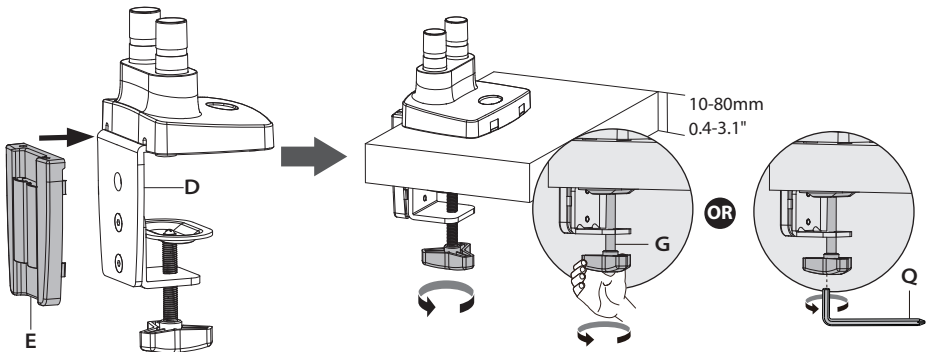
Mount Bracket (D) to Base (C) with Bolts (L). Bolts could be tightened by the 4mm Allen Key (P). Apply pads (M) to the Bolts (L) to avoid desk scratches.



Similarly, attach Clamp (G) to Bracket (D) with Bolts (L) and 4mm Allen Key (P).



Adjust the Clamp width to fit with desk. Secure stand to desktop by tightening Clamp (G) or by Allen key (Q). Attach Base Support Cover (E) to Bracket (D).



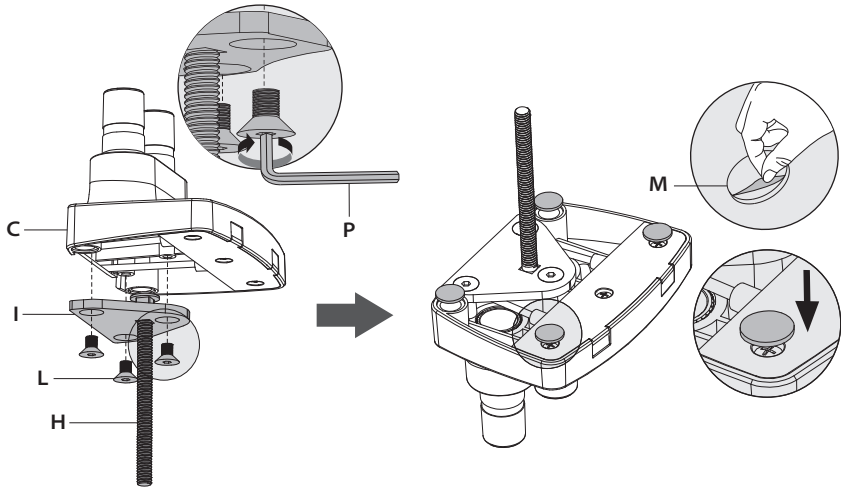
## STEP 1: (Continued)

### OPTION B: Grommet Base Installation

Place Carriage Bolt (H) through the center of Grommet Base (I).

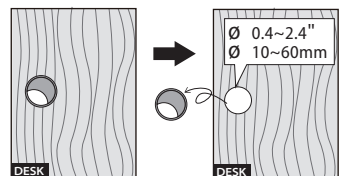
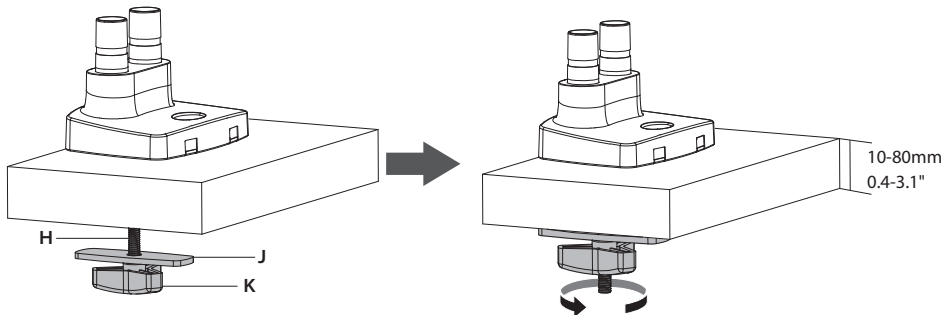
Mount Grommet Base to Base (C) bottom with Bolts (L) and tighten by 4mm Allen Key (P).

Apply pads (M) to the Bolts (L) to avoid desk scratches.



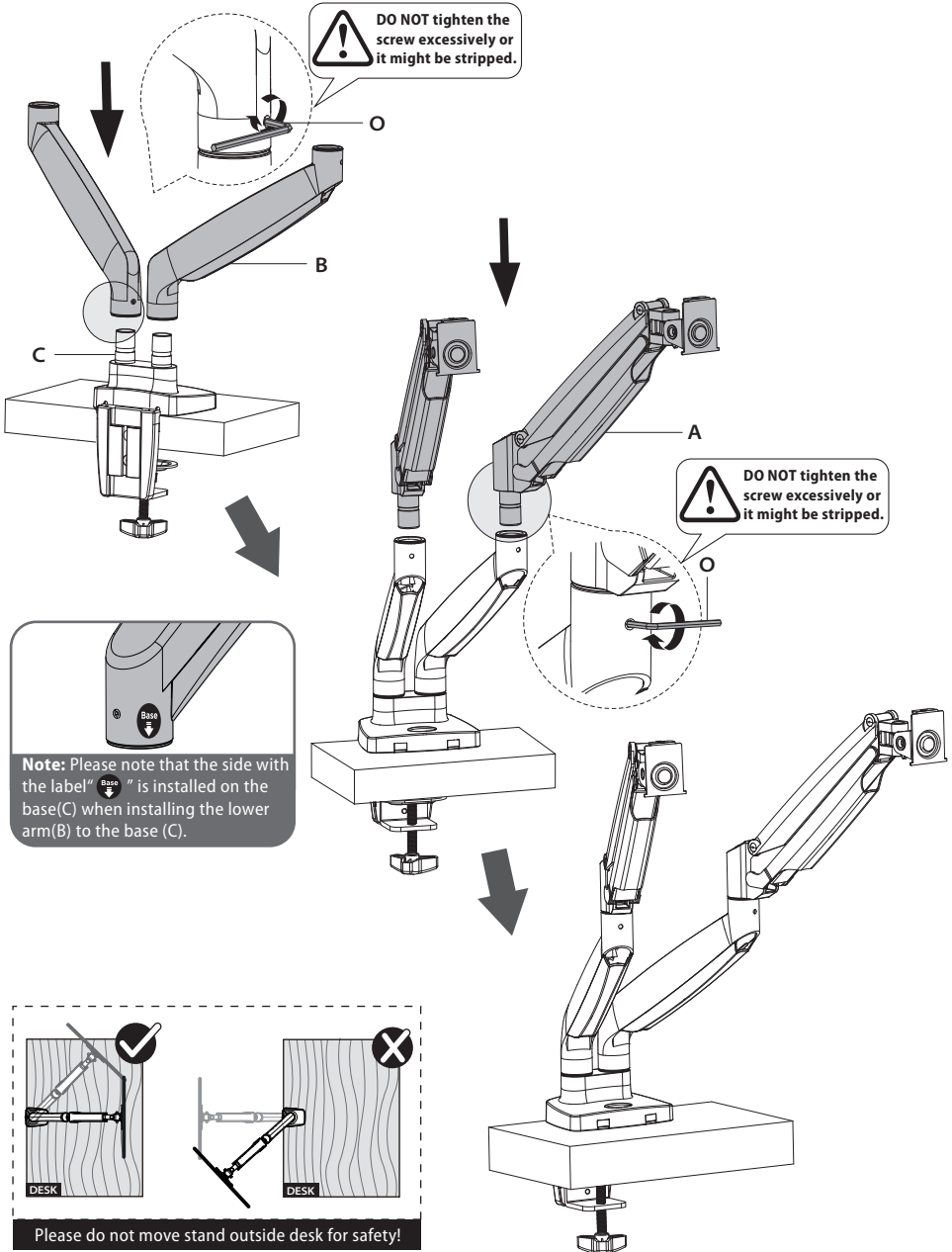
Run Carriage Bolt (H) through Grommet Hole on desktop. Attach Support Plate (J) and Wingnut (K).

At last, tighten Wingnut (K).



## STEP 2: Arm Installation

Install the lower arm (B) and the upper arm (A) to the base (C). Secure the arm by tightening the inside screw using a 3mm Allen Key (O).

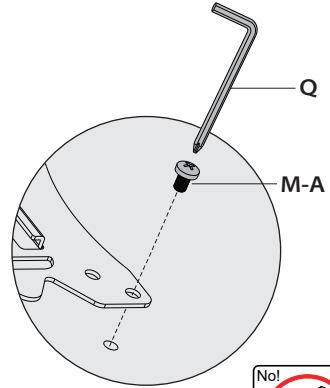
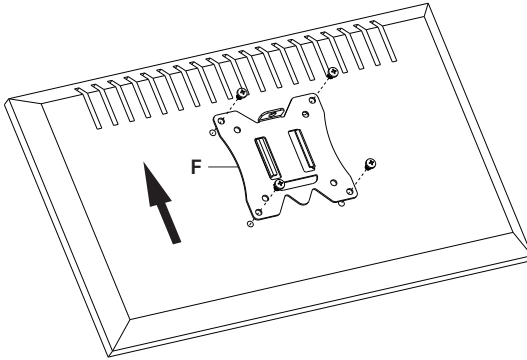


## STEP 3 : Attach Monitor

### OPTION A: Flat Back Monitor

Attach the VESA plate (F) to the back of monitor and secure it by using a 6 mm Allen Key (Q) to tighten screws (M-A) .

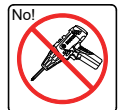
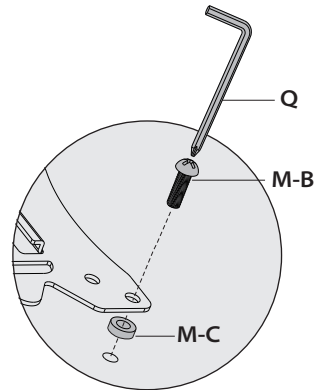
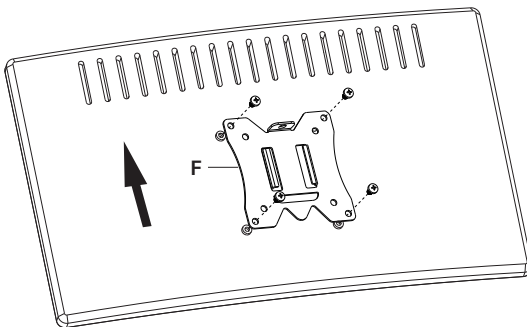
Do not tighten the screws excessively or your monitor might be damaged.



### OPTION B: Curved Back Monitor

Attach the VESA plate (F) to the back of monitor and secure it by using a 6 mm Allen Key (Q) to tighten screws (M-B) along with spacers (M-C).

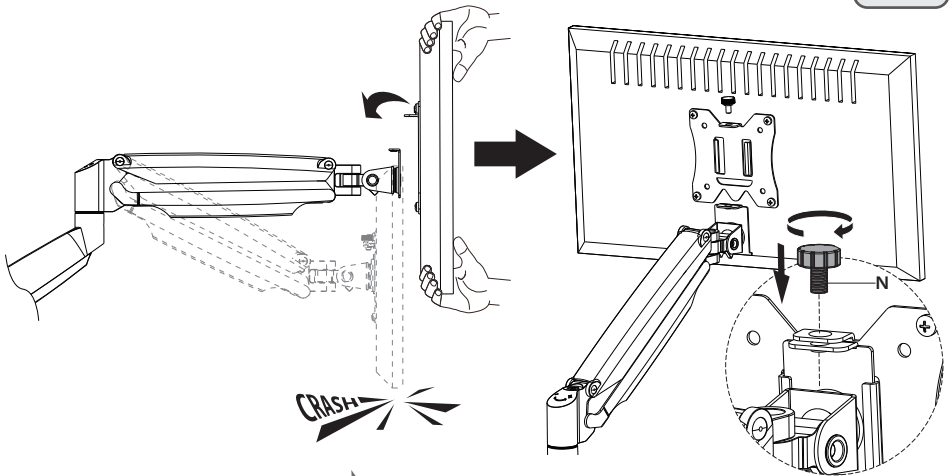
Do not tighten the screws excessively or your monitor might be damaged.



**NOTE:** Hand tightens screws to avoid over tightening.

## STEP 4: Hang Monitor

Slide the monitor onto the head of swivel arm, install the security bolt (N). Make sure the security bolt is installed before you rotate the monitor.

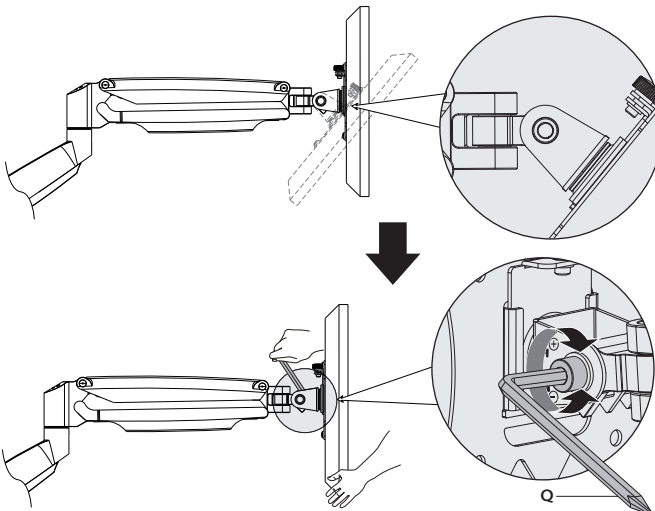


### Important Notice:

The pressure of the gas spring is initially set at the lowest value. So when the monitor is hung on, make sure you hold it with both hands and DO NOT let it go down suddenly.



## Guideline to adjust monitor tilting angle



### Problem:

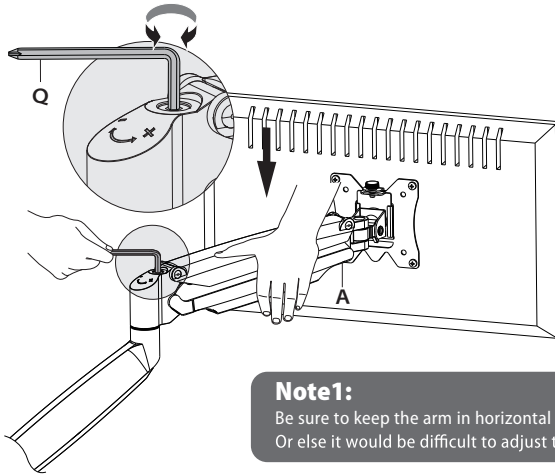
If monitor faces down

### Solution:

1. Loosen the tilting bolt.
2. Hold the bottom of monitor with one hand and adjust to determine your desired tilt angle.
3. Retighten the tilting bolt towards "+" to fix the angle.

## STEP 5: Adjust Tension

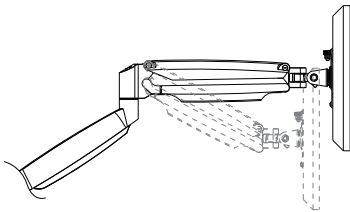
For proper functioning of this mount, depending on different weight of monitor you might need to adjust tension in upper arm (A) using 6 mm Allen Key (Q).



**CAUTION**

### Note1:

Be sure to keep the arm in horizontal position during adjustment. Or else it would be difficult to adjust the mount or damage the mount.

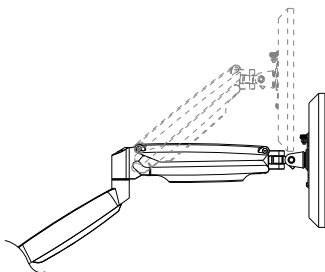


#### Situation 1: Arm falls down

Upper Arm with monitor falls down and fails to stay where intended.

#### Solution:

Turn the inside screw counterclockwise(“+”direction) to increase gas spring tension until the arm can stay as intended.



#### Situation 2: Arm rises up

Upper Arm with monitor rises up and fails to stay where intended.

#### Solution:

Turn the inside screw clockwise(“-”direction) to decrease gas spring tension until the arm can stay as intended.

### Note2:

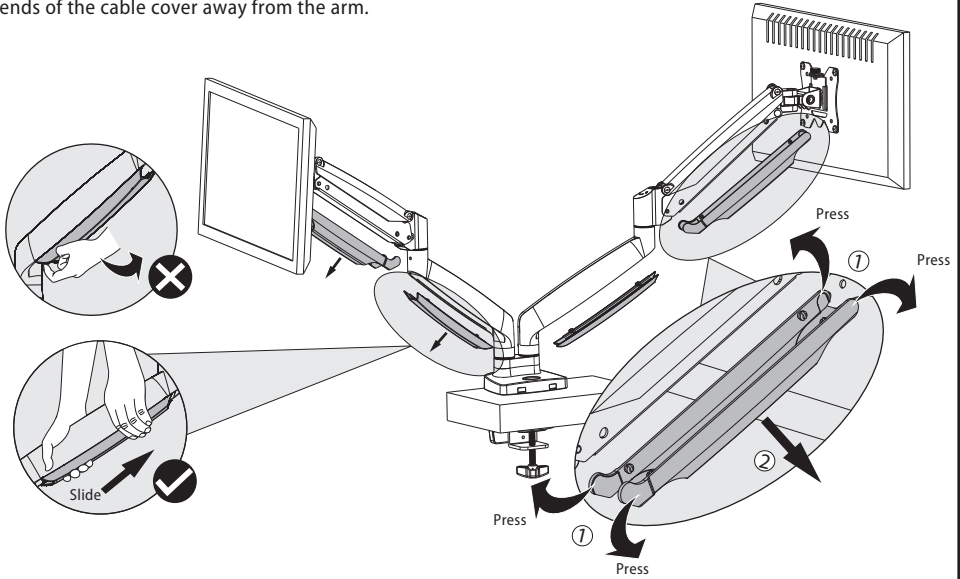
As for how many circles the screw should be turned, the table below is for reference.

Monitor Weigh	6.6lbs (3kg)	8.8lbs (4kg)	15.4lbs (7kg)	22lbs (10kg)	28.7lbs (13kg)	30.9lbs (14kg)
Circles (AT LEAST)	5	7	10	13	16	20

## STEP 6: Cable Management

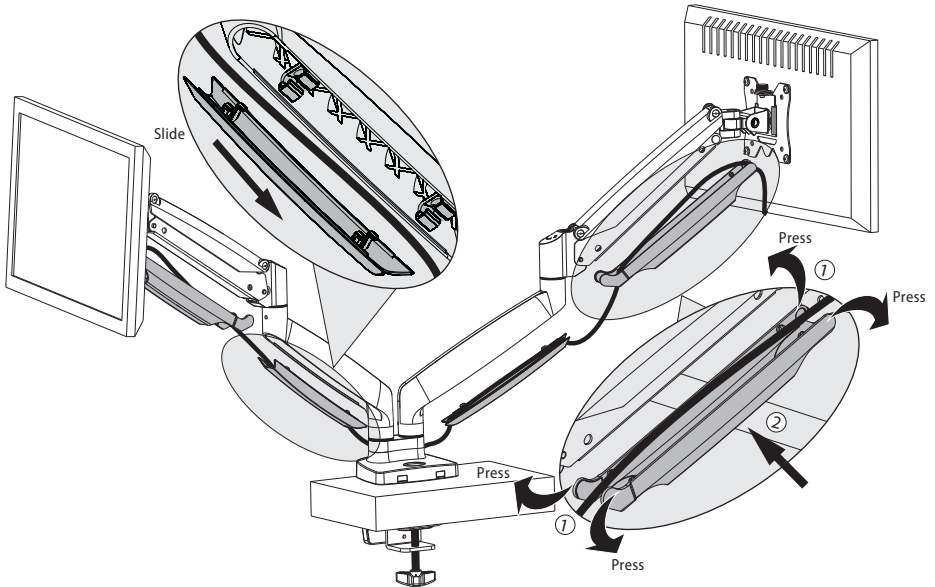
### Remove Cable Cover

Remove bottom plastic covers from arm as shown in diagram. Do not need to take much effort to pull the ends of the cable cover away from the arm.



### Attach Cable Cover

Run cables from monitor through bottom of arm. Reattach plastic covers as shown in diagram.



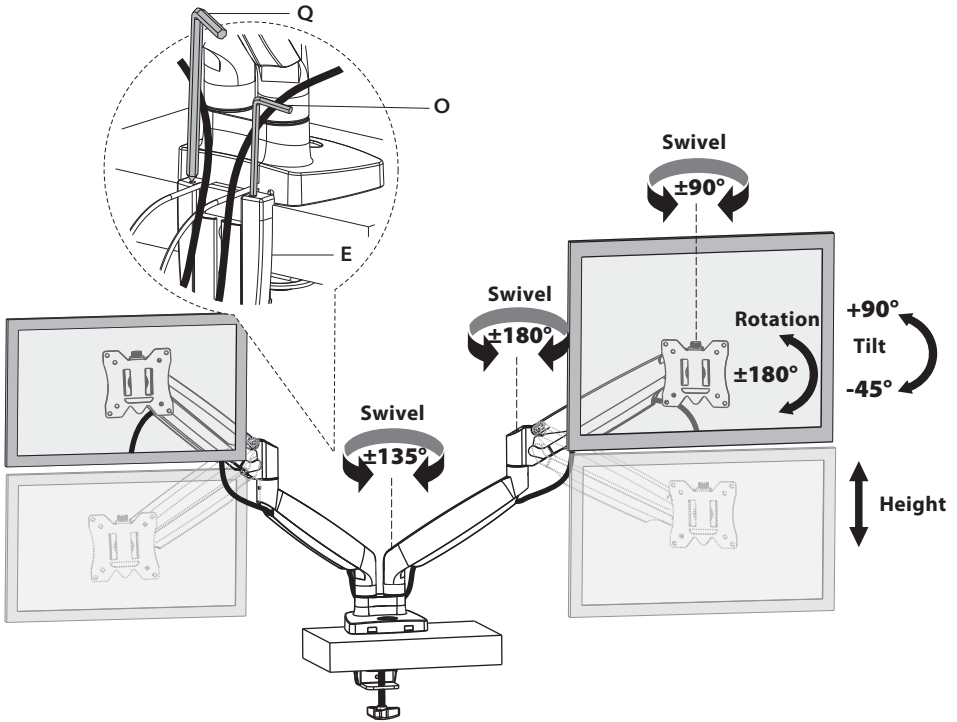
# Adjust as Desired

Allen key(Q,O) can be stored in Base Support Cover(E) for next time using.

## Note:

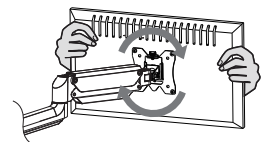
When tilted, if the monitor sags or does not stay, please fasten the tilting bolt on the mount until the monitor can be held at any angle as needed.

- Tilt
- Swivel
- Rotation
- Height

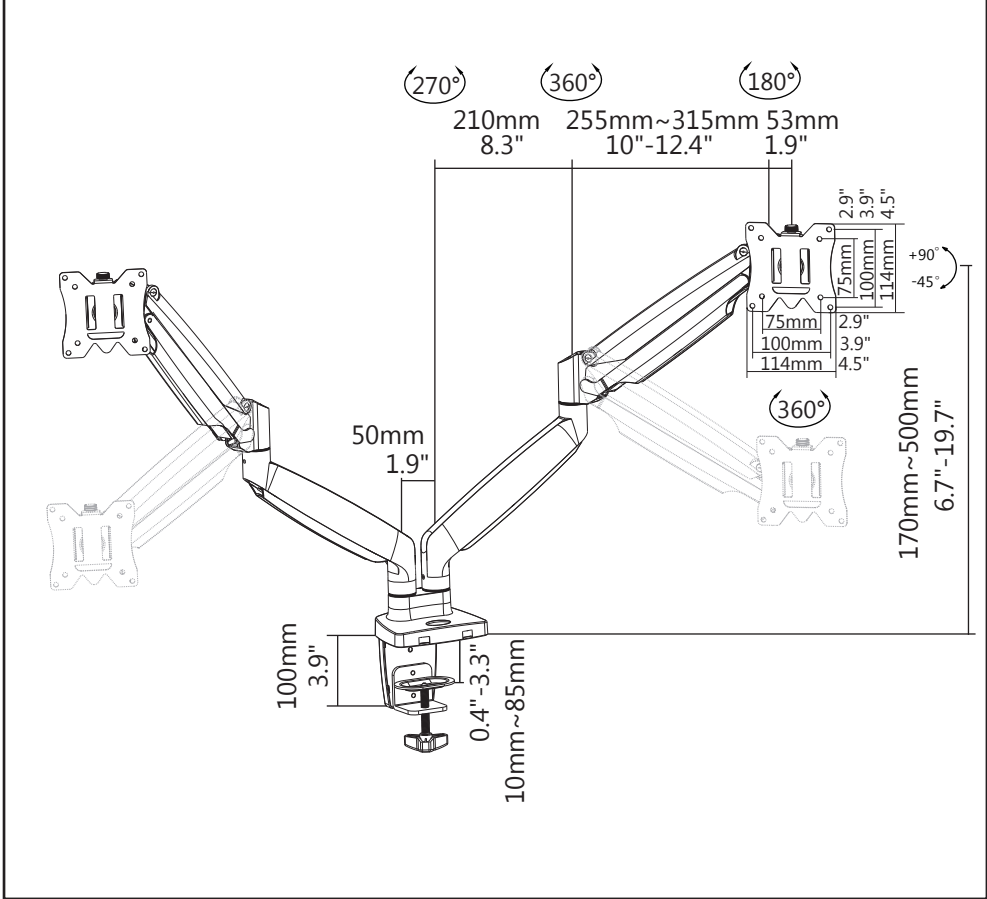


**Note:** To ensure stability, the tightness of the rotating axis has been preset, so it would be kind of difficult to rotate the VESA plate.

**Suggestion:** Please attach the monitor first, then hold the two sides of it with both hands, and rotate vigorously. If that doesn't work out, please do not hesitate to ask for our help.



# Product Dimensions



## CAUTION AND MAINTENANCE:

- Never allow children to climb, stand, hang, or play on any part of monitor or stand.
- This product is intended for indoor use only. Using this product outdoors could lead to product failure and personal injury.
- Check that the bracket is secure and safe to use at regular intervals (at least every three months).