

IP Camera

Quick User Manual

1. Overview

An IP camera (hereinafter referred to as IPC) is a new product integrating network video technologies into a traditional camera. The IPC can realize simpler monitoring (particularly remote monitoring), easier construction and maintenance, better audio and alarm linkage, more flexible record storage, more enriched product selection, much clearer video effect, and more perfect monitoring management. In addition, the IPC supports access by WiFi, 3G/4G/5G and optical fiber, and PoE (Power over Ethernet, or network power supply).

With the rapid development of network, network products have gradually spread to every corner of our life. The developing and innovative IPC has been widely applied to the education, commerce, medical treatment, public services, and other fields.

Common audio and video cameras used at the places such as banks, supermarkets, companies, residences, and households have gradually replaced by IPCs whose videos can be uploaded to the network. You can view public or private real-time pictures or dynamic videos at home or any place where network is available.

2. How to connect the camera via its web interface?

1. Power on the camera and connect it with network.

(1). Use a 12V/2A Power adapter to power on the camera.

(2). Connect the camera with router or network switch.

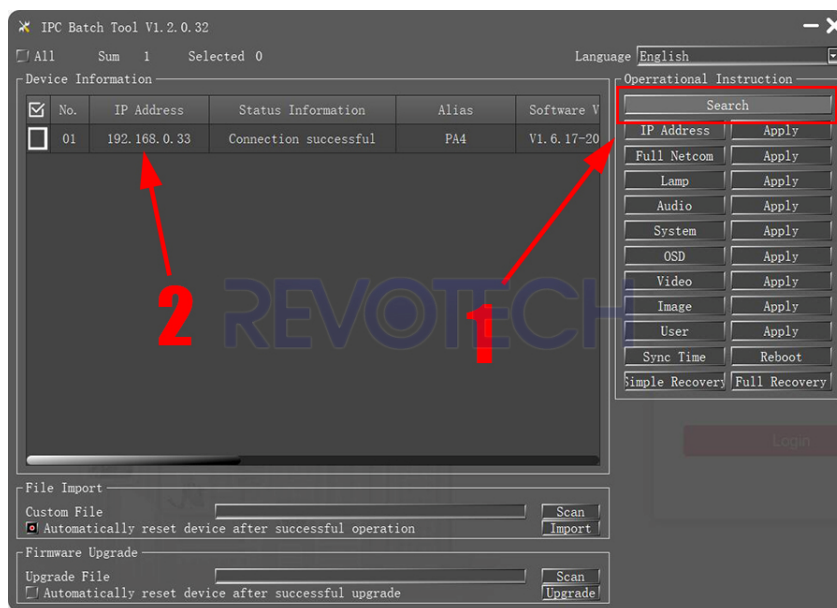
Notice: If your camera support POE function, then you can just connect it with a POE switch.

2. Use the “IPC Batch Tools” to confirm the IP address of the camera

(1). The camera default dynamic IP address, so you can use the “IPC Batch Tools” to confirm the IP address.

(2). Download and install the “IPC Batch Tools” and open it.

(3). Click “Search” and the tools will find the camera and you can get the IP address of the camera.



(4). Double click the camera, and you can also get the image of the camera via the tools.



3. Login in the web interface of the camera.

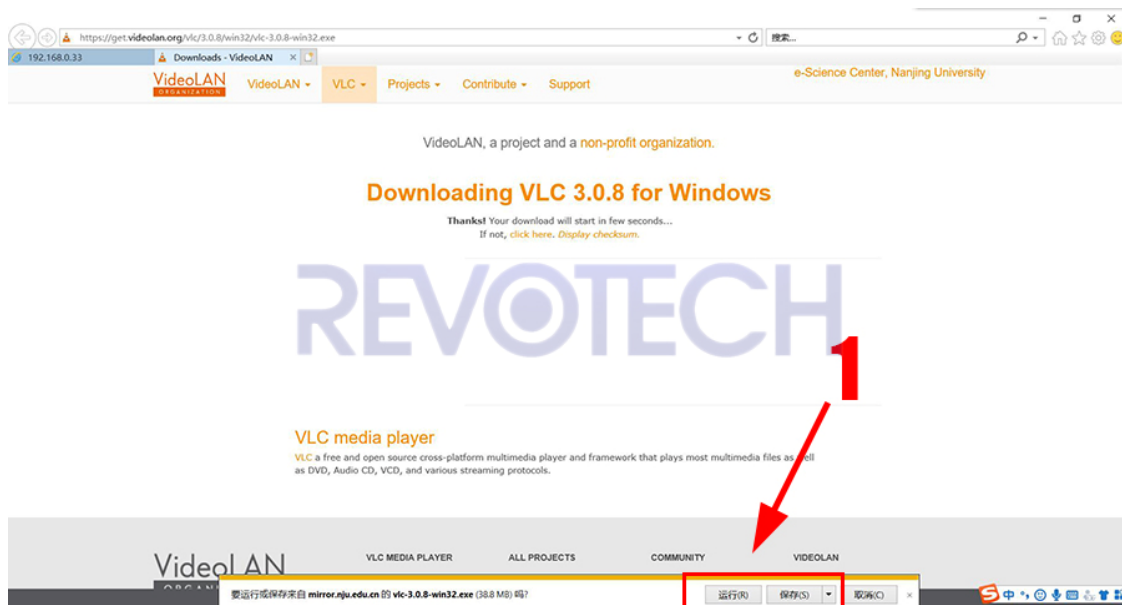
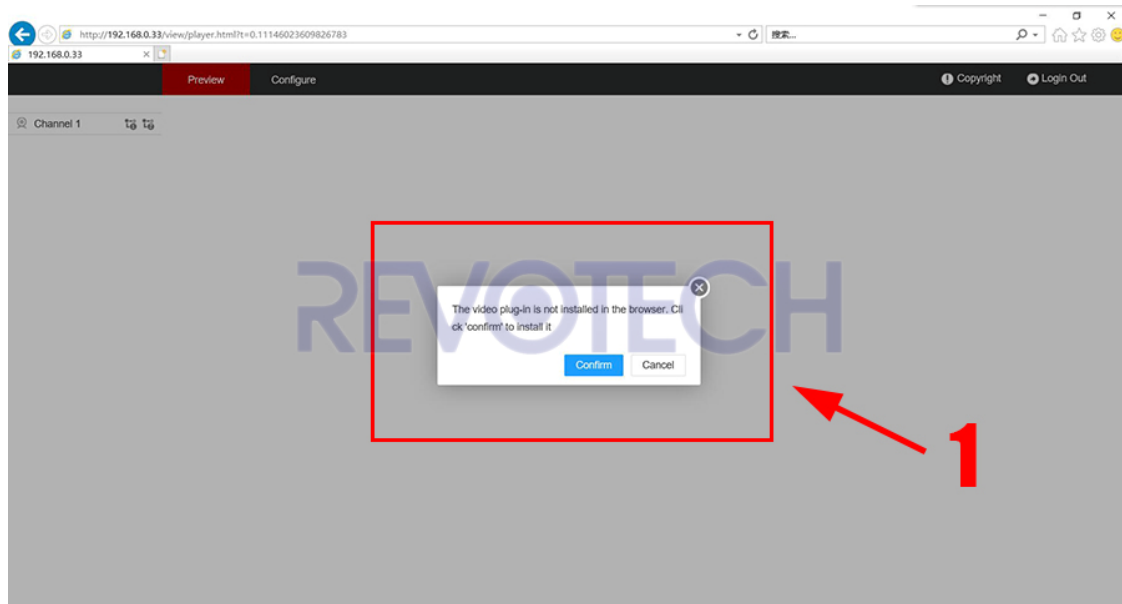
(1) Open the IE browser, input the IP address of the camera in the address bar, click "Enter". Input default user name and password and then click "Login".

Default user name: **admin**

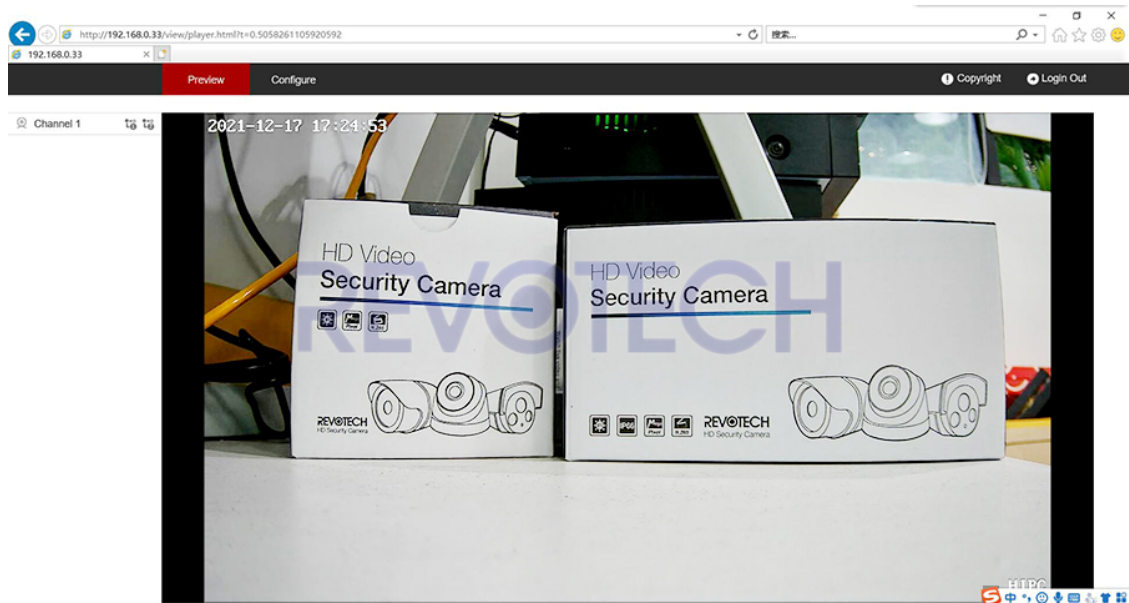
Default password: **123456**



(2) Click “Confirm” to download and install the plug-in of the camera.



(3) After the installation of the plug-in, refresh the browser or reopen the browser to login in the web interface again, you can get the image of the camera now.



Notice:

The camera default dynamic IP address and enable the “DHCP” and “IP Address adaptive” function, and it will auto close the “DHCP” and “IP Address adaptive” function if the camera is connected for more than 6 hours, then the camera will changed into fixed IP address.

3. How to connect the camera with VMS computer software?

(1) Download and install the VMS software.

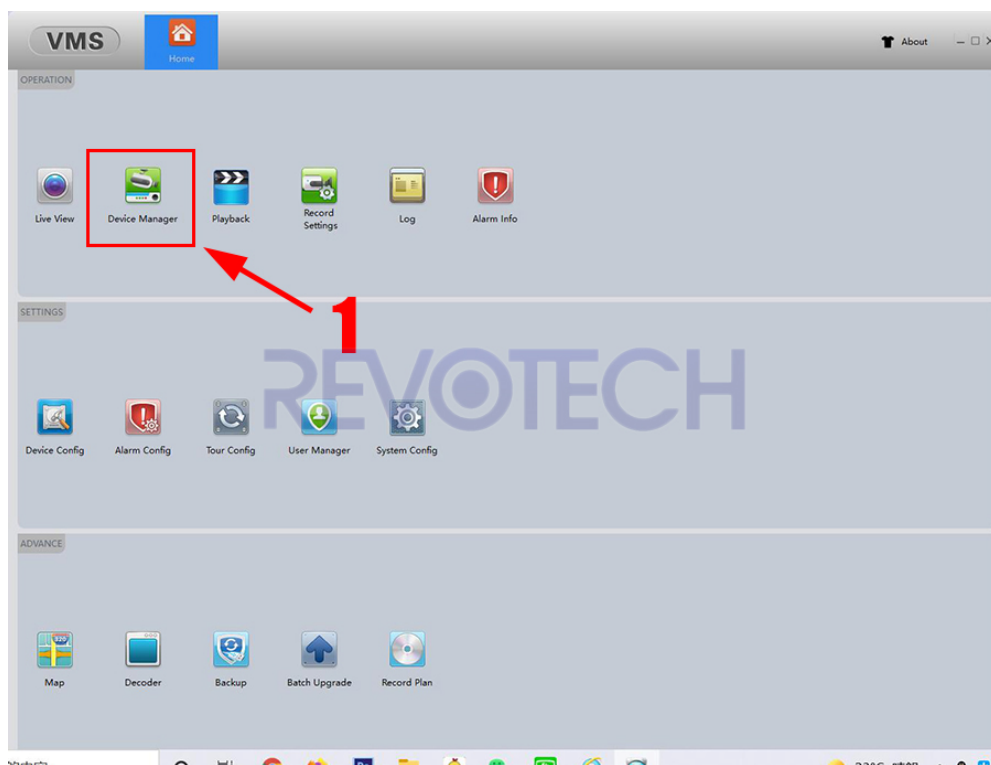
(2) Open the VMS and input the user name and password, and then click “Login”.

Default user name: **admin**

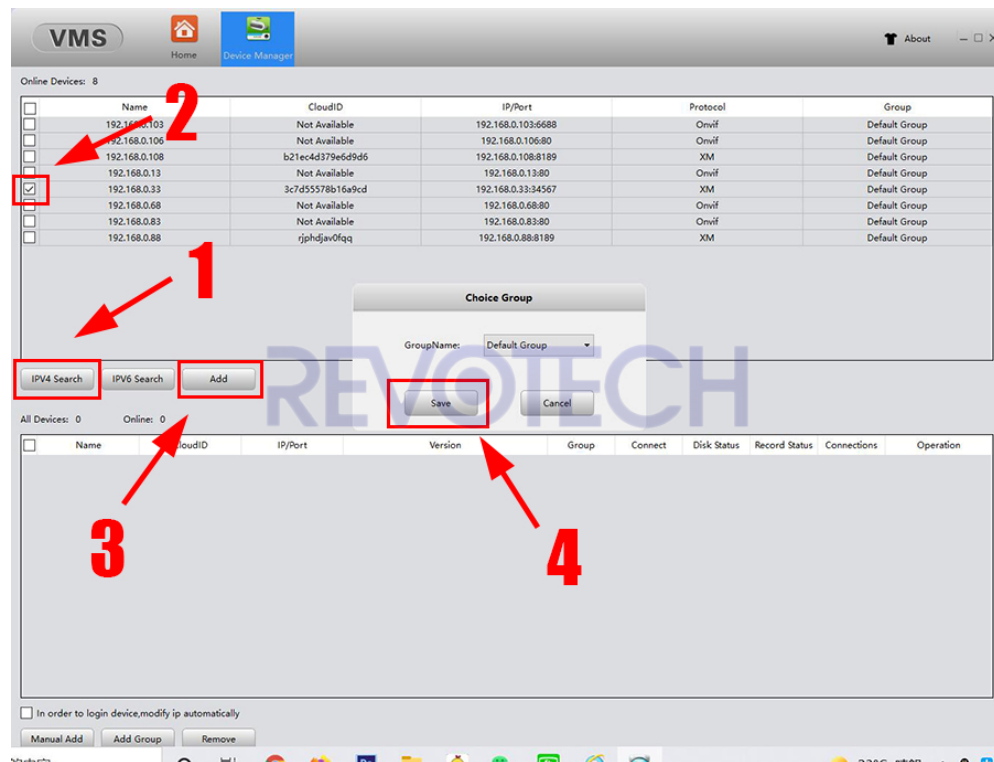
Default password: **admin**



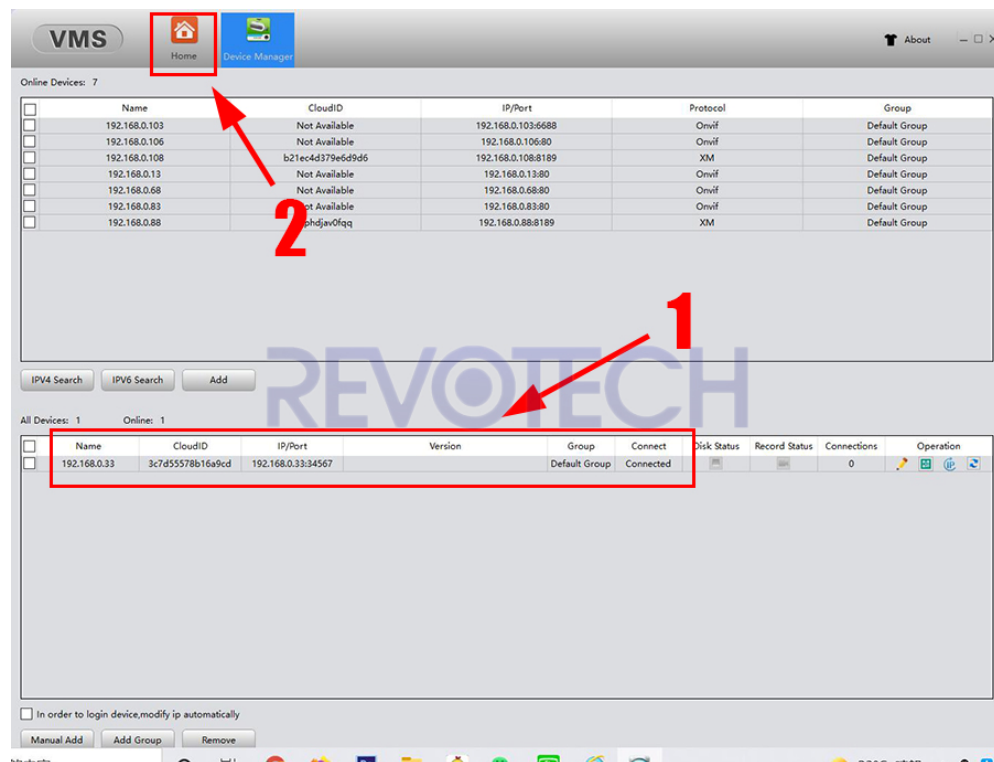
(3) After you login in the software, click “Device Manager”.



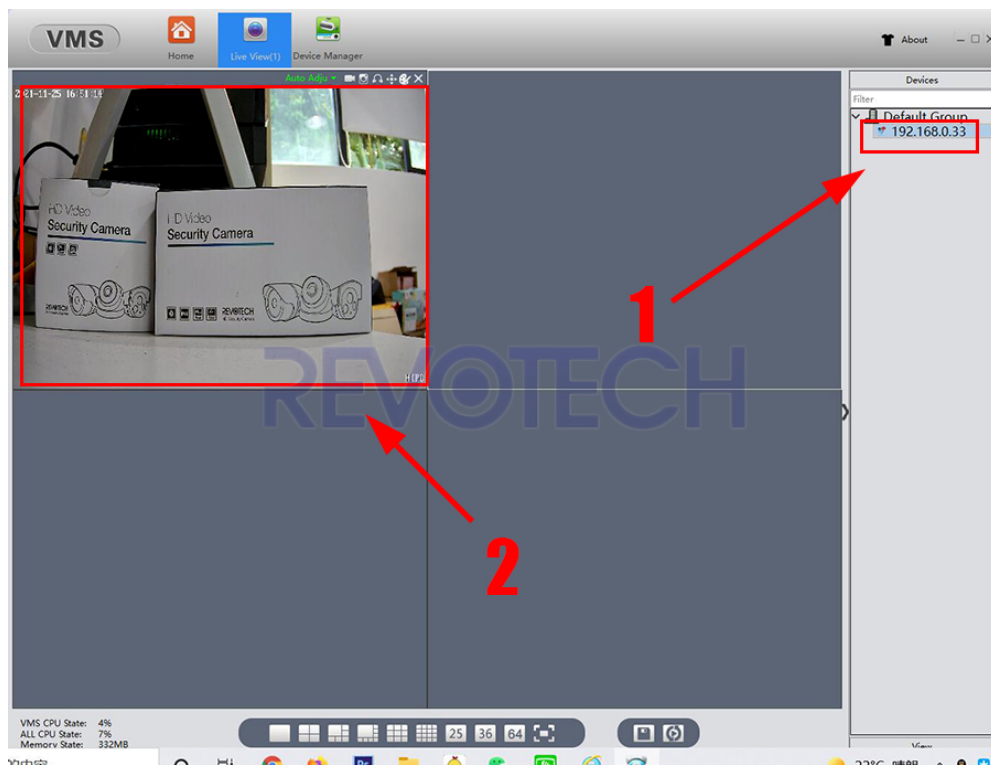
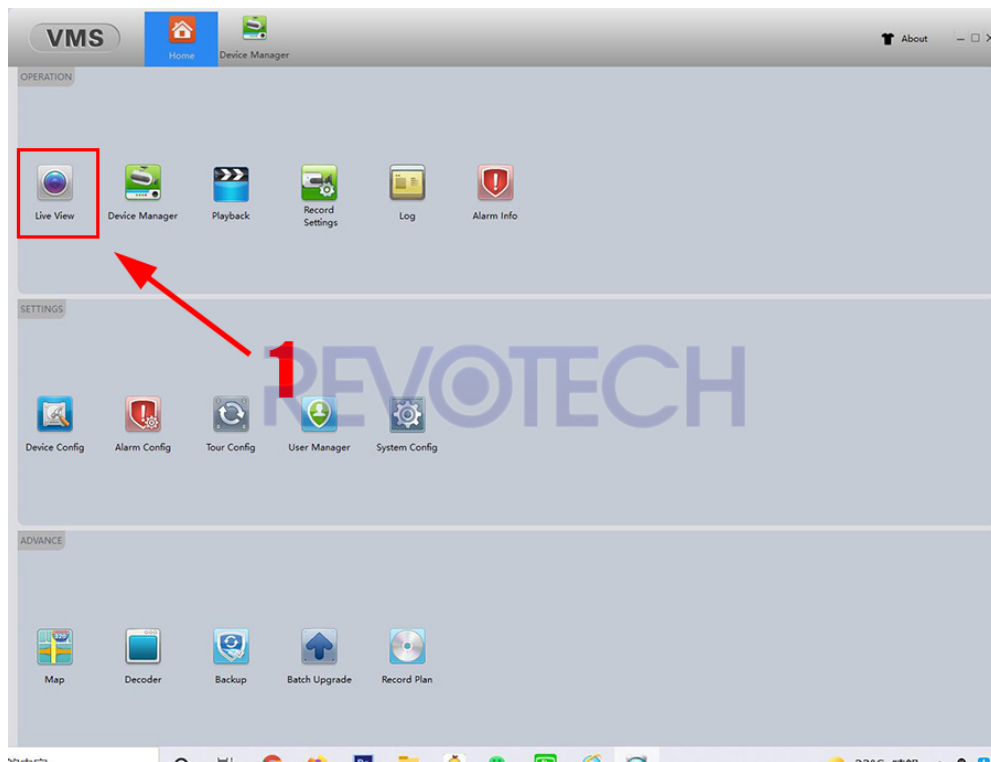
(4) Click “IPv4 Search”, and tick the camera that it find, and then click “Add” and click “Save”.



(5) The camera is added successfully, and then go back to the home page.



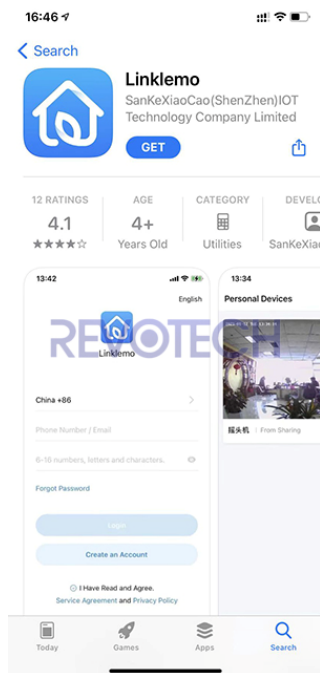
(6) Click “Live View”, and double click the camera in the list of the right side, then you can get the image of the camera now..



4. How to connect the camera with Linklemo APP?

1. Install the app and register a account for the app.

(1) Go to Apple Store or Google Play, search "Linklemo", and then download and install it.



Or you can scan this two-dimension code to download it.



Apple



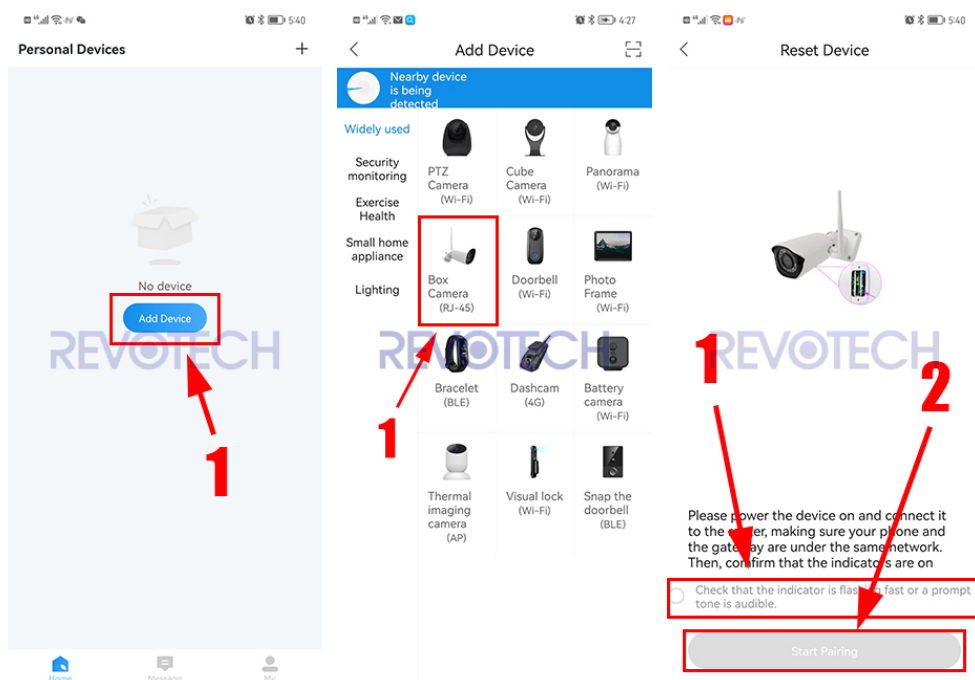
Android

(2) Open the app and click “Create an Account” to registered a account, and then input the account name and password, then click “Login”.



2. Add the camera to the app.

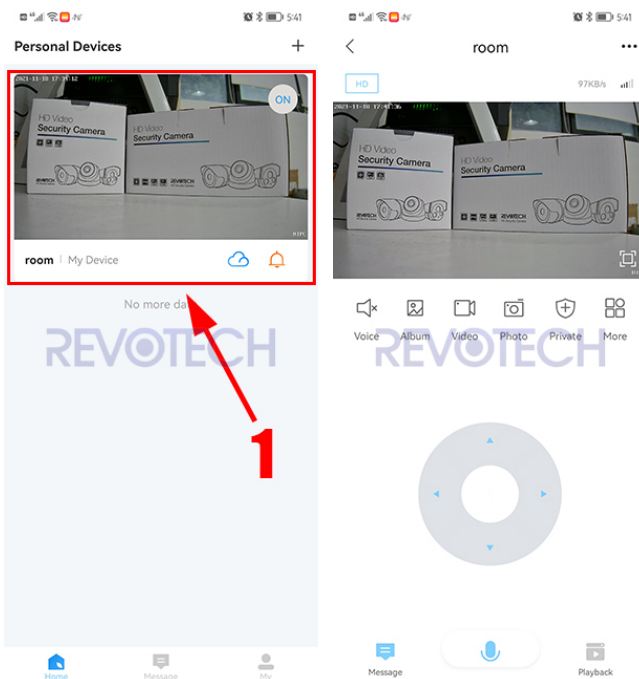
(1) Click “Add Device”, and click “Box Camera (RJ-45)”. And then tick the gray word tips and click “Start Pairing”.



(2) The app will find the camera and Click “Add”, then input the device name for the camera and click “Ok”.



(3) Click the device that you just added, then you can get the image of the camera now.



5. Other information

1. URL for RTSP (Port 554):

rtsp://IPAddress:554/stream1 (Main Stream)
rtsp://IPAddress:554/stream2 (Second Stream)
rtsp://username:password@IPAddress:554/stream1 (With password)

2. URL for Snapshot:

http://IPAddress/cgi-bin/snapshot.cgi

3: Default Port information:

HTTP Port: 80
ONVIF Port: 80
RTSP Port: 554