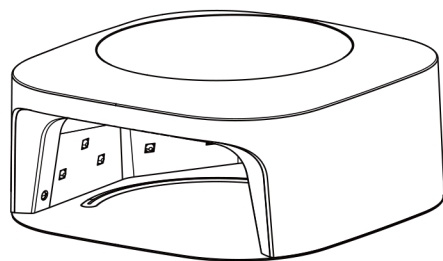


UV/LED NAIL LAMP

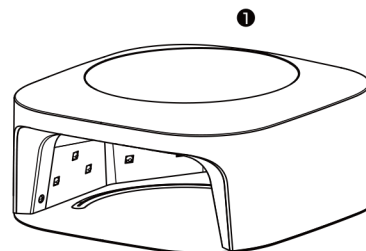
User Manual



Thank you for choosing our product!



01 PACKING LIST

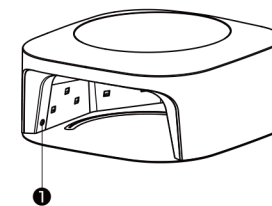


- ① Nail Lamp
- ③ Instruction

- ② AC Adapter

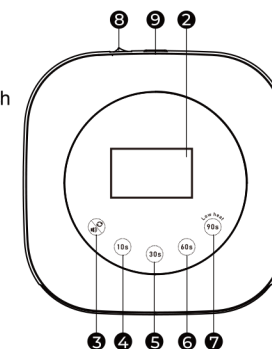
01

02 PARTS INSTRUCTION



- ① Infrared Induction

- ② Digital display
- ③ Mute/ Text display switch
- ④ 10S timing button
- ⑤ 30S timing button
- ⑥ 60S timing button
- ⑦ 90S Low heat mode
- ⑧ Switch
- ⑨ Power socket



02

03 PRODUCT INSTRUCTION

Designed for professional nail experts. Cure gel, builder, acrylic, gem nails perfectly.

04 OPERATION INSTRUCTION

1. Connect the charger to the power supply and the machine starts charging. Please use the original charger with 12V/2A, or the nail lamp will be damaged or can not be fully charged.
2. The short press is text display switch, you can choose the text side according to your need. The long press is sound switch, you can choose mute if you need quiet nail time, or choose speaker to provide audible feedback for each click.
3. Automatic sensor mode: hand into the lamp, nail lamp began to work. Hand out, the lamp stops working.
4. Manual mode: press the time you need, set bottom for the 10S/30S/60S (normal mode) to work. Press button 90S (low temperature mode) to start working clockwise.

03

This mode is painless during the curing. Besides, it has time memory function.

5. Please connect the correct adapter to charge. Battery charging status: The battery is charged for 3 hours and the working time is 4-6 hours. The "" on the display flashes to indicate charging, and it stops flashing to indicate fully charge.
6. Maintenance guide: If the lamp does not keep working for more than 30 minutes, please turn it off in case the battery life is shortened.

05 TECHNICAL INSTRUCTION

Number of lamp beads: 30PCS
Product Name: Square Rechargeable Nail Lamp
AC Input: 100V-240V 50/60Hz
DC Output: DC 12V 2A
Power: Max 54W
Wave Length: 365nm+405nm

04

06 CAUTIONS

1. Please read the instruction carefully before use the lamp.
2. Please use the correct voltage.
3. Avoid liquid enter the machine to avoid malfunction.
4. Please don't use the machine when the timing button is fault.
5. Unplug the adapter if you don't use the machine for long time.
6. Don't use the machine when the adapter is fault to avoid any potential risk.
7. The single long bright time should not exceed 600 seconds to avoid reducing the service life of the product.
8. Your eyes should not look directly at the light of the nail lamp for a long time.
9. Please use the original charger(12V/2A). When the input voltage is more than 15V, the display shows "OU", and the buzzer will alarm continuously to prevent the wrong use of the power adapter.
10. If you do not use the machine for a long time, please charge the battery every 3 months to keep it healthier and longer.

05