



**STIRIFFIC  
HANDS-FREE  
AUTO STIRRER**

**MODEL#GST-210**



FOR CUSTOMER SERVICE  
QUESTIONS OR COMMENTS  
PLEASE CALL  
**888.552.0033**

**Gourmia**

GOURMIA.COM

**Gourmia**

# STIRIFFIC HANDS-FREE AUTO STIRRER

**MODEL#GST-210**

Safety Precautions .....	4
Product Specs .....	6
Using Your Device .....	7
Cleaning and Care .....	8
Warranty Details .....	9

**USER  
MANUAL**

## SAFETY PRECAUTIONS:

---

**Disclaimer:** Manual instructions should always be read and implemented prior to product use. Manufacturer/ importer advisory boards are not responsible for improper use due to instruction manual negligence or failure to follow directions.

**This product is intended for indoor household use only!**

Keep this device out of the reach of children or unqualified persons, since the misuse of contents and packaging materials may result in hazard or death.

**Scorching and Burns:** Refrain from touching hot surfaces or water content while the device is in use. Instead, use handles or knobs as needed.

**These necessary precautions must be taken when using electrical appliances:**

1. Never leave the appliance exposed to the elements (rain, sun, etc).
2. Appliances can be used by persons with reduced physical, sensory, or mental capabilities. It may also be used by those lacking experience, as long as they are given explicit instructions and supervision concerning the use of the appliance in a safe way and understand the hazards involved.
3. Do not use the appliance if the power cord or plug are damaged, or if the appliance itself is faulty. All repairs, including replacement of power cord, must be done by an authorized technician in order to avoid hazard or risk
4. If an extension cord is being used, check to be sure it is suitable for the appliance's power source in order to avoid danger to the operator or surroundings.
5. This appliance is designed for household use only and may not be used for commercial or industrial purposes.
6. This appliance conforms to the directives 2006/95/EC and EMC 2004/108/EC, and to the regulations (EC) No. 1935/2004 of 27/10/2004 regarding material in contact with foods.
7. Any changes to this product that have not been expressly authorized by the manufacturer may lead to the user's guarantee being rendered null and void.
8. Packaging must never be left within the reach of children since it can be dangerous.
9. The appliance may be used on pots with a diameter of 6 1/4" - 10 1/4" and a height of 3 1/4" - 6 3/4".
10. Before switching the appliance on, make sure the motor support is tightly fixed to the container and all components are properly assembled.
11. To prevent deforming, do not leave the motor support connected to the container after use.
12. Never use the appliance while empty.
13. To prevent personal injuries and damages to the appliance, always keep hands and kitchenware away from moving parts.
14. Never remove the motor unit during operation.
15. Do not remove food from the sides of the container while the appliance is operating. Switch the appliance off and always use an appropriate spatula.

16. In case of replacement and/or maintenance of the charger or the power cord, contact an authorized service center or skilled person to prevent any risk.

17. In case of battery leakage, do not use the appliance; take it to your nearest authorized assistance center for replacement of batteries.

18. The appliance works with rechargeable batteries, therefore it shall not be disposed with normal waste. Take it to an appropriate differentiated waste collection center in your area. Contact your local administrations for dealers providing this service. Disposing an appliance separately means avoiding possible negative consequences both to the environment and people's health.

## PRODUCT SPECS

- A. ON/OFF button
- B. Motor unit
- C. Extendable motor support
- D. Charging adaptor
- E. Mixing paddle
- F. Shaft
- G. Speed adjusting button
- H. Charging socket

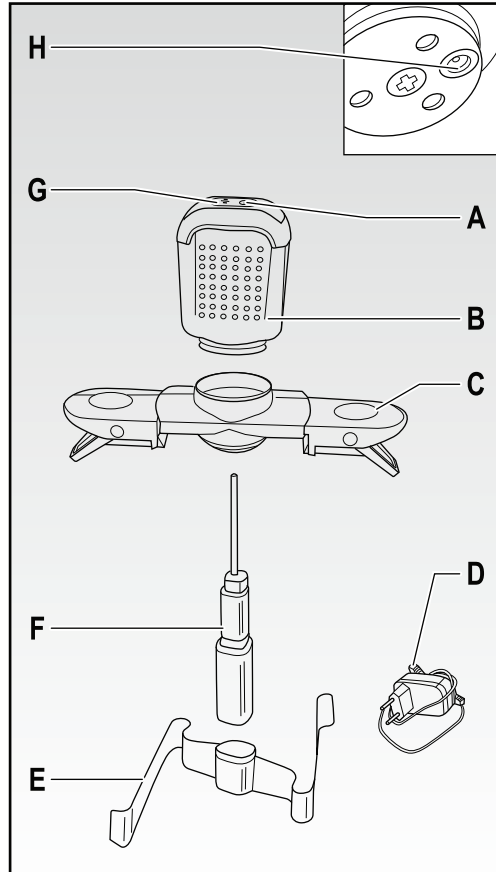


Fig. 1

## USING YOUR DEVICE

### BATTERY CHARGING

**Attention:** Fully recharge the battery before use.

Recharge for at least 24 hours to activate the battery before the first use, after which the time for a complete recharge is approximately 16 hours.

Do not start the appliance during recharge.

Fully discharge the battery before a new recharge.

- Connect the adaptor (D) to the charging socket (H) and insert the plug of the

## USING YOUR DEVICE

adapter (D) into a mains power socket. The LED light on the upper part of the motor unit will be red and turns green when the appliance is full charge.

**Attention:** The upper part of the motor unit (B) may warm up during recharge; this is normal.

Avoid recharging the unit at a temperature below 40°F or above 105°F to prevent damage to the batteries.

If the appliance does not work, check that it is properly powered on and correctly plugged in. The appliance will have a longer and better operation when it is used at certain intervals.

**Important:** if its functioning seems to be shorter after repeated use, it does not mean the motor unit is faulty. Such inconvenience may be solved by leaving the appliance on until it stops working, and then recharging it for approximately 16 hours. This procedure serves to improve the accumulator charging time. Repeat this operation several times if necessary. If the operating time is still short, contact the service center.

### HOW TO OPERATE

- Insert the shaft (F) into the central hole of the mixing paddle (E) (Fig. 2).
- Position the shaft (F) previously assembled into the container where the food to be mixed will be poured (Fig. 3).

**NOTE:** the container must have a diameter of 6 1/4" - 10 1/4" and height of 3 1/4" - 6 3/4".

- Insert the motor unit (B) into the support (C), by rotating it counterclockwise (Fig. 4).
- Position the assembled motor support (C) onto the container so that the shaft (F) inserts properly in the lower hole of the support itself (Fig. 5).
- Adjust the extendable arms of the motor support (C) according to the container diameter and lock the support (C) to the

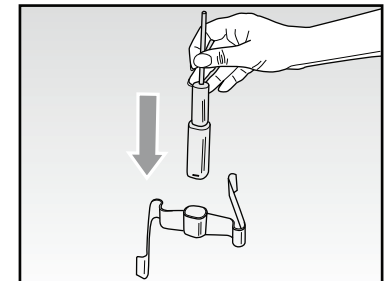


Fig. 2

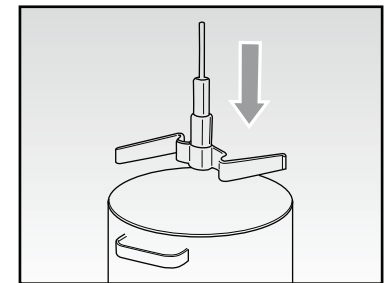


Fig. 3

container itself by means of the suitable clamps (Fig. 6).

- Switch the appliance on by pressing the apposite ON/OFF button (A).

- Start the operation by means of the button (G) of the speed “I”. Increase the speed according to requirements by pressing the apposite button (G) of the speed “II” again.

- In case some food remains on the container sides, switch the appliance off and move food towards the center, using an appropriate spatula.

- After the operation, switch the appliance off by pressing the ON/OFF button (B). When the battery is low, the appliance emits a warning.

- Recharge the motor unit (B) by removing it from the appropriate support (C) and rotating it clockwise or disassemble the appliance to clean it.

**ATTENTION:** Before using the appliance, make sure all attachments are properly mounted. To prevent personal injuries and damages to the appliance, always keep hands and kitchenware out of moving parts.

## CLEANING AND CARE

- The shaft (F) and the mixing paddle (E) can be put in the dishwasher or washed by hand in warm water with mild detergent.
- Use a damp cloth for cleaning the motor unit (B) and the motor support (C).

**ATTENTION:** After cleaning, allow all parts to dry completely before mounting.

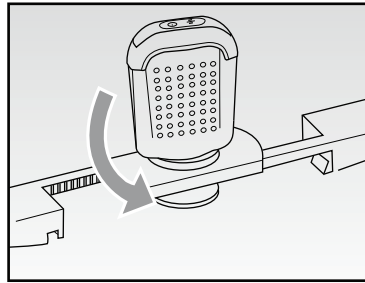


Fig. 4

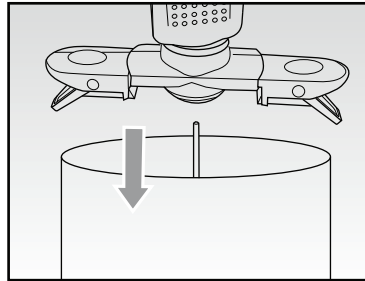


Fig. 5

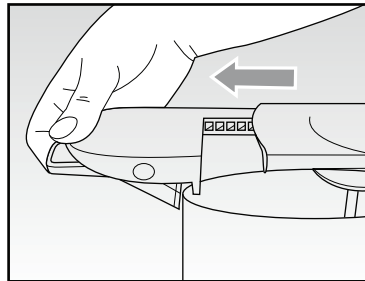


Fig. 6

## WARRANTY DETAILS

This product is guaranteed under the premise of a 1 year limited warranty period, applicable to the original purchaser and not transferable to a third party user.

Repair or replacement of defective parts are at the seller's discretion. In the event that repair isn't possible, the seller will replace the product/ part. If product repair/ replacement won't suffice, the seller has the option of refunding the cash value of the product or component returned.

Product defects not covered under the warranty provisions include normal wear and damage incurred from use or accidental negligence, misuse of instruction specifications, or repair by unauthorized parties. The manufacturing company is not liable for any incidental or consequential damages incurred by such circumstances.