

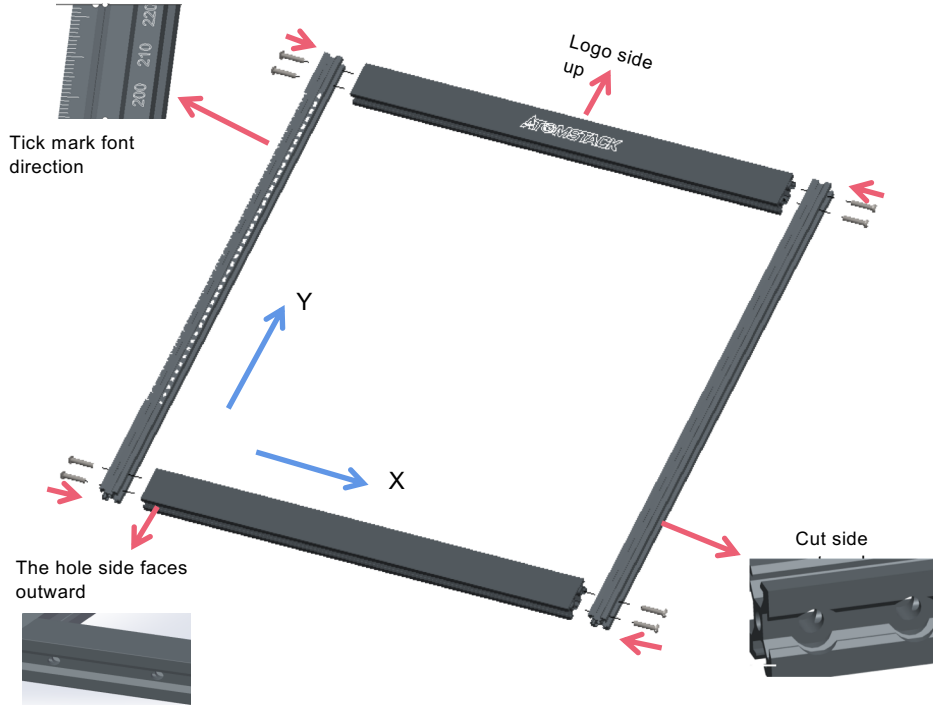
# ATOMSTACK A5/A5 Pro Laser Engraver Installation Manual



- English
- Deutsche
- Français
- Italiano
- Español
- Polskie

CE FC RoHS FDA   **MADE IN CHINA**

# Step 1



## Step1 Required components:



### Installation Manual:

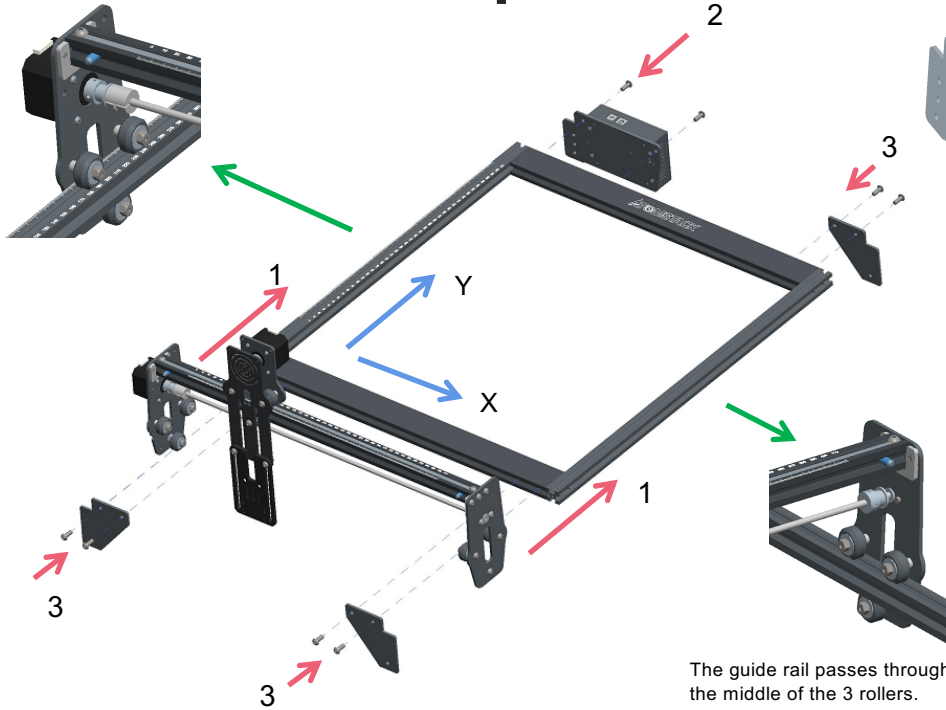
1. Find the four large profiles in the picture above, place the four profiles as shown, and pay attention to the direction of the profiles.

2. Tighten the M5 screw in the shaft, and judge whether you have installed it correctly through the enlarged view details.

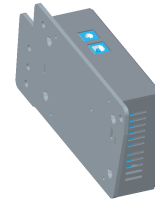
### Nota:

- Place the screws, but do not tighten them.
- Then tighten the screws diagonally.
- Tools required, M5 Allen key+M5 screws.

# Step2



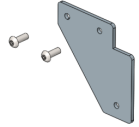
## Step2 Required components:



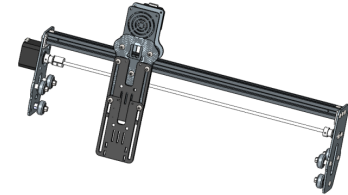
Control box \*1



M5 screws\*8



Support gasket \*3



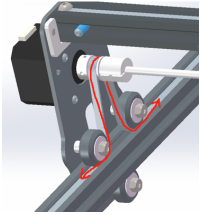
X-axis components\*1

The guide rail passes through the middle of the 3 rollers. Loosen the distance between the upper and lower guide wheels appropriately.

### Installation Manual:

1. Push the X-axis component into the base frame in the direction shown in the figure. Adjust the eccentric nut appropriately.
2. Install the control box as shown.
3. Use an M5 Allen key to install 3 Support gasket.

# Step 3



4

3

1

3

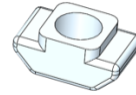
3

Synchronous belt \*2

Profile end cover \*4

Type T Nut \*4

Type T Nut Lock screws\*4



## Step 3 Required components:



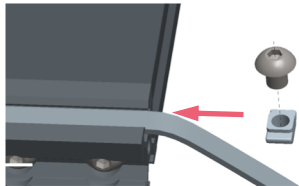
5 Tighten the T nut and cut off the excess belt.

### Installation Manual:

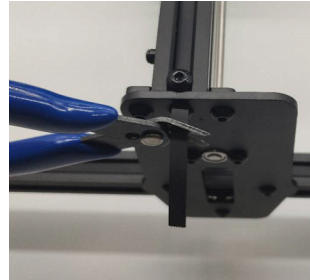
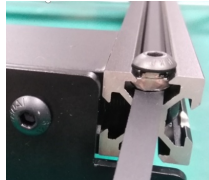
1. Install two synchronous belts as shown in the figure. First tighten one end with a T-nut, then pass the other end through the roller on the X-axis assembly as shown in the figure, and finally tighten the other end and fix it with a T-nut.
2. T-nut fixing method (Push the T-nut from the groove on the end of the profile, and then use the screw to tighten the T-nut), the T-nut is as close to the end of the profile as possible, and cut off the excess belt.
3. Cover the profile end cover (the side of the end cap with protrusions is facing down)

### TIPS:

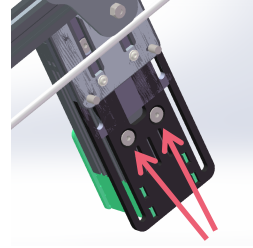
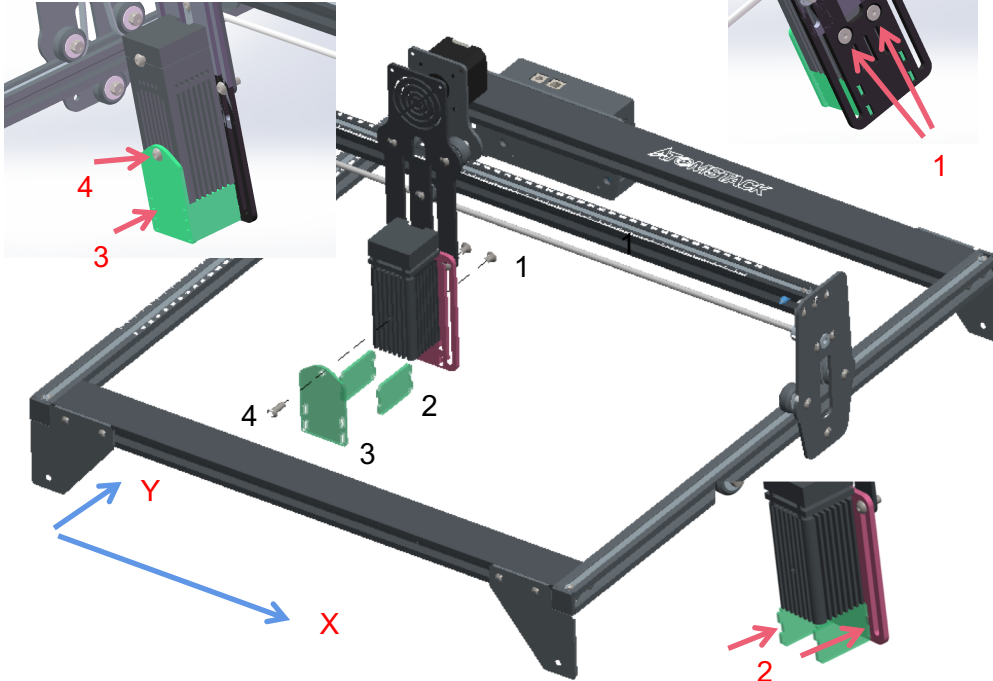
The installation of the Y-axis synchronous belt can refer to the installed synchronous belt on the X-axis assembly. Determine whether the timing belt is tight enough: press the position shown in Figure 4 with your fingers, and if there is no obvious deformation, it is tight enough. If the deformation is large, loosen one end of the T-nut and tighten the timing belt, and then tighten the T-nut.



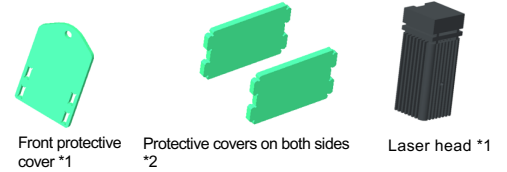
2



# Step4



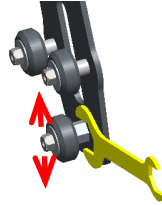
## Step4 Required components:



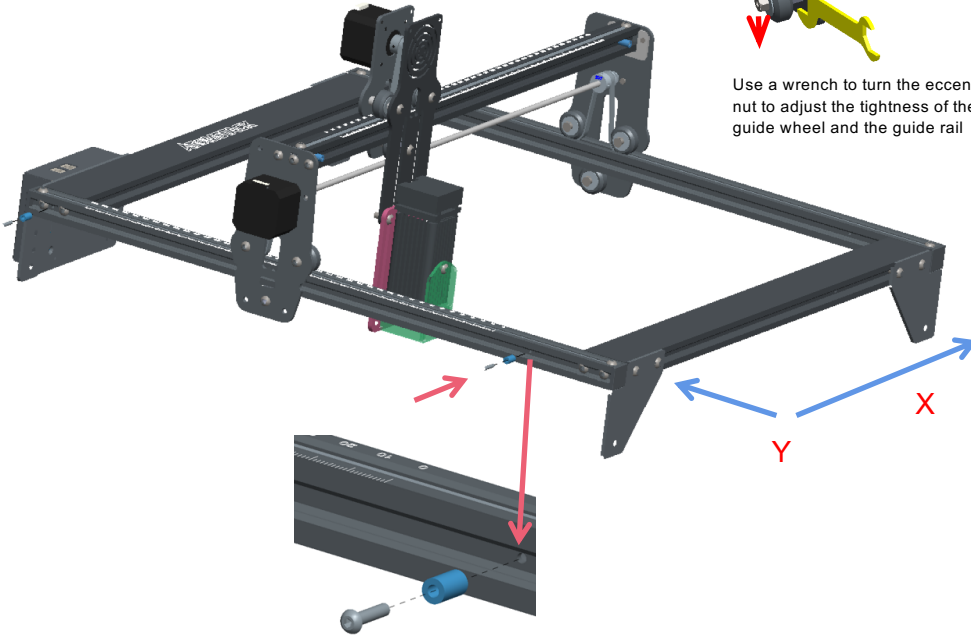
### Installation Manual:

1. Fix the laser head on the slider board with M5\*8 countersunk head screws. The screws must be tightened.
2. Insert the green protective covers on the left and right sides.
3. Insert the front green protective cover.
4. Fix the front protective cover with M5\*14 flat round head screws.

# Step5



Use a wrench to turn the eccentric nut to adjust the tightness of the guide wheel and the guide rail



## Step5 Required components:



M3\*14Screw\*2 Y-axis limit column \*2



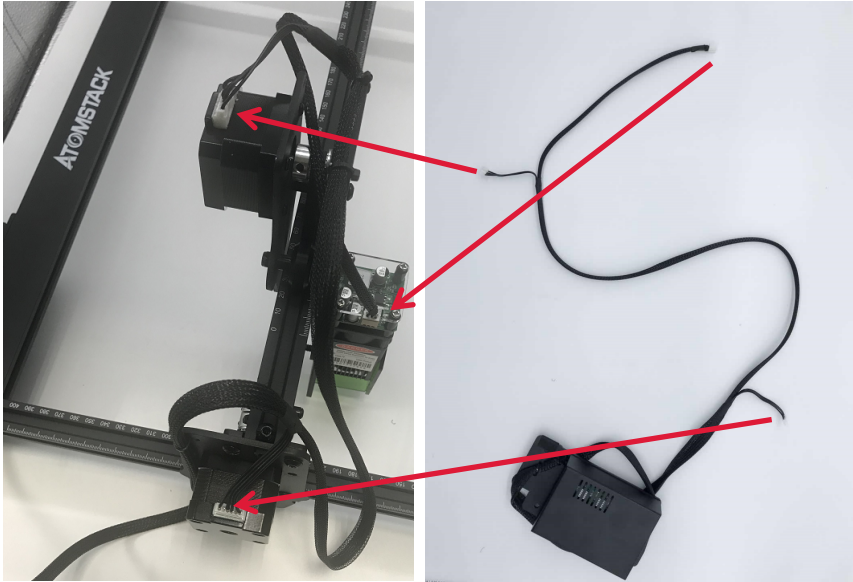
### Installation Manual:

1. As shown in the figure, fix the Y-axis limit column with M3\*14 screws on the left slide rail.
2. Adjust the eccentric nut to ensure that the X-axis and Y-axis move smoothly without shaking.

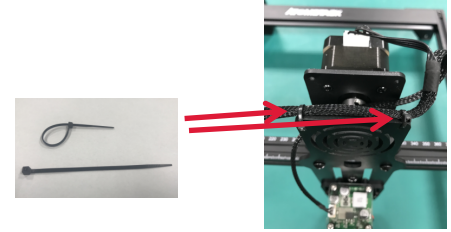
### TIPS :

How to determine the tightness of eccentric nuts? Under the condition of ensuring that the bracket does not shake, you can lift one end of the machine to an angle of 45 degrees with the horizontal plane, and release the X-axis or Y-axis bracket from a high place. If the bracket can slide at a constant speed to the end, the tightness is suitable.

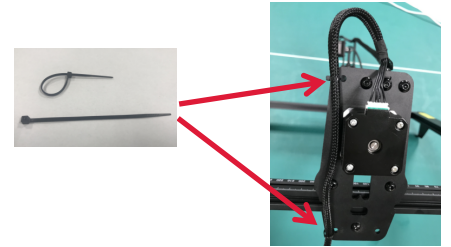
## Step 6 Installation of terminal blocks and cable bundle



1



2



### Installation Manual:

1. Insert the three wire terminals as shown
2. As shown in the figure, tie the machine fixing hole and the cable bundle with a cable tie to prevent the wire terminal from loosening.



Manufacturer: Shenzhen AtomStack Technologies Co., Ltd.  
Address: AB301, New Chabridge Industrial Park, No.3, Baolong 6th Rd., Longgang Dist, Shenzhen, Guangdong, CHINA 518116

**View the multilingual instructions here:**



Scanner APP:  
QR Code Reader  
/Barcode Scanner  
or any APP with  
scanner

## Customer Service:

➤ For detailed warranty policy, please visit our official website at:

[www.atomstack3d.com](http://www.atomstack3d.com)

➤ For Laser Engraver technical support and service, please email:

[support@atomstack3d.com](mailto:support@atomstack3d.com)

Atomstack.official

