

## NICE JOB...

Reading the instruction manual cover-to-cover!  
Here are a few extra tips to keep you & your  
Formula Pro® Advanced happy.



Push the drip tray firmly against the base to make sure it fits securely. Trust us, you definitely don't want it to fall off and spill the entire bottle of formula you just made.



The stirring wheel snaps firmly to the axle. It's OK to give it a strong pull to remove it. Don't worry, you won't break it.



Keep your Formula Pro® Advanced sparkling clean!

## Customer Service

If you are experiencing problems with your Baby Brezza product, please call Baby Brezza Customer Service at 1-888-396-6552 or visit [babybrezza.com/contact](http://babybrezza.com/contact) before returning the product to the store you purchased it at so that we can offer you our best service customized to your particular situation. To obtain warranty services, please call Customer Service at: 1-888-396-6552, visit [babybrezza.com/contact](http://babybrezza.com/contact) or write to: Baby Brezza, 250 Passaic Street, Newark, NJ 07104 Attn: Customer Service.

## Limited 1-Year Warranty

The limited warranty is valid only on products bought through authorized resellers and used in the United States and Canada. Buying through an unauthorized reseller or using this product outside of the United States and Canada automatically voids this warranty.

This warranty is available to consumers only. You are a consumer if you own a Baby Brezza appliance that was purchased at retail for personal, family or household use. Except as otherwise required under applicable state law, this warranty is not available to retailers or other commercial purchasers or owners. We warrant that your Baby Brezza appliance will be free of defects in material or workmanship under normal home use for one year from the date of original purchase. Customer will be required to present original proof of purchase in order to obtain the warranty benefits. In the event that you do not have proof of purchase date, the purchase date for purposes of this warranty will be the date of manufacture. If your Baby Brezza appliance should prove to be defective within the warranty period, we will repair it or, if we consider it necessary, replace it.

To obtain warranty services, please call Customer Service at: 1-888-396-6552, visit [babybrezza.com/contact](http://babybrezza.com/contact) or write to: Baby Brezza, 250 Passaic Street, Newark, NJ 07104 Attn: Customer Service.

This product may be covered and/or protected by patent, patent application, or design registrations which are provided on the following webpage: [babybrezza.com/pages/patents](http://babybrezza.com/pages/patents)



# babybrezza®

## formula pro®

### advanced

## Instructions

for set-up, use and cleaning  
for all models except  
Formula Pro® Advanced Wifi

## ACTIVATE YOUR WARRANTY

SCAN HERE



[babybrezza.com/register](http://babybrezza.com/register)

Benefits: Faster customer support,  
extended customer service hours & more



## SAVE THESE INSTRUCTIONS

Please read and follow all instructions carefully to get the most out of your  
Formula Pro® Advanced and to ensure it works properly every time.

# IMPORTANT SAFEGUARDS

When using electrical appliances, basic safety precautions should be followed, including the following:

1. Read all instructions before using.
2. Do not touch hot surfaces.
3. To protect against electric shock and injury to persons, do not immerse cord, plug, or appliance in water or other liquid.
4. This appliance is not intended for use by persons (including children) with reduced physical, sensory, or mental capabilities, or lack of experience and knowledge, unless they are closely supervised and instructed concerning use of the appliance by a person responsible for their safety. Close supervision is necessary when any appliance is used by or near children. Children should be supervised to ensure that they do not play with the appliance.
5. Turn off and unplug the appliance from the outlet when not in use, before assembling or disassembling parts and before cleaning. To unplug, grasp the plug and pull from the outlet. Never pull from the power cord.
6. Do not operate any appliance with a damaged cord or plug or after the appliance malfunctions, or is dropped or damaged in any manner. Contact the manufacturer at their customer service telephone number for information on examination, repair, or adjustment.
7. The use of accessory attachments not recommended by the appliance manufacturer may cause fire, electric shock or injury.
8. Use on level surface and be sure there is no debris under the unit and the rubber wheels are touching the surface.
9. Household use only. Do not use outdoors.
10. Do not let cord hang over edge of table or counter, or touch hot surfaces.
11. Do not place on or near hot gas or electric burner, or in a heated oven.
12. Do not use appliance for other than intended use.
13. Do not attempt to use the machine without water in the water tank.
14. This appliance has a polarized plug (one blade wider than the other). To reduce risk of electric shock, this plug is intended to fit into a polarized outlet only one way. If the plug does not fit fully into the outlet, reverse the plug. If it still does not fit, contact a qualified electrician. Do not attempt to modify the plug in any way.
15. A short power-supply cord is provided to reduce risks of becoming entangled in or tripping over a longer cord. Longer detachable power-supply cords or extension cords are available and may be used if care is exercised in their use. If using the machine with an extension cord, make sure the cord is the proper electrical rating for the machine. The extension cord should be arranged so that it does not drape over a counter top or tabletop, where it can be pulled on by children or tripped over unintentionally.
16. Before serving make sure formula mixture is at safe temperature for baby.
17. Avoid contact with moving parts. Never remove powder container, powder container lid, funnel or water tank while machine is in operation.
18. Do not disassemble or open base of machine.

# TABLE OF CONTENTS

Important Safeguards.....	1
Attentions.....	3
Parts.....	4
Set-up Instructions.....	5
Preparing Your First Bottle.....	7
Controls & Operation.....	8
Preparing Your First Bottle (Continued).....	9
Easy Daily Cleaning Instructions.....	11
Monthly Cleaning Instructions.....	12
Long Term Storage Instructions and Error Codes.....	13
Troubleshooting.....	14

## TECHNICAL DATA

<b>Models:</b> FRP0046, FRP0047, FRP0048, FRP0131, FRP0132, FRP0133, FRP0134, FRP0149	
<b>Supply Voltage:</b> 120V ~ 60Hz	<b>Rated Power:</b> 260W

## ATTENTION:

Don't take anything apart yet.

Follow these steps before doing anything else.

- Place the Formula Pro® Advanced on the counter or other level surface and turn it around so the back is facing you.
- Remove the water tank from the back of the machine, wash it with warm soapy water and rinse thoroughly, then dry.
- Fill water tank with bottled water suitable for infant formula preparation, or boiled water, cooled to room temperature.
- Place water tank back on base, turn the machine around so the front is facing you and then plug it in. The machine will turn on and the LCD screen will light up.
- The machine will beep once to tell you it's powered on. You'll also see the LCD display turn on.  
If the LCD screen is not lit up when plugged in, press the power button to turn on the machine.

### Now let's rinse the inside of the machine.

- Get a cup or bottle larger than 10oz and place it under the funnel.
- Press the "ounce" button on the control panel repeatedly until the LCD screen says "10oz".
- Now press the "water only" button on the control panel. The Formula Pro® Advanced will dispense 10oz of water.
- Dispose of the water dispensed, or use it to water your plants.

Now you can turn off and unplug the machine, remove all the parts shown on the next page and set-up your new Formula Pro® Advanced.

- Get familiar with the part names on the next page, then proceed with the set-up on the following pages.

### WARNING:

- Set-up & cleaning is critical to the function of your Formula Pro® Advanced. Please follow all instructions properly.
- Always use distilled or boiled water cooled to room temperature.
- Never pour boiling/hot water in water tank.
- Unboiled tap water and/or unsterilized baby bottles can potentially lead to adverse effects for the health of your baby. Use purified water suitable for infant formula preparation.
- Only prepare one bottle at a time, feed immediately & follow all instructions carefully.
- Do not keep leftover formula mix. If your child was born premature, with low birth-weight or is immune deficient, please consult your pediatrician before using this machine.

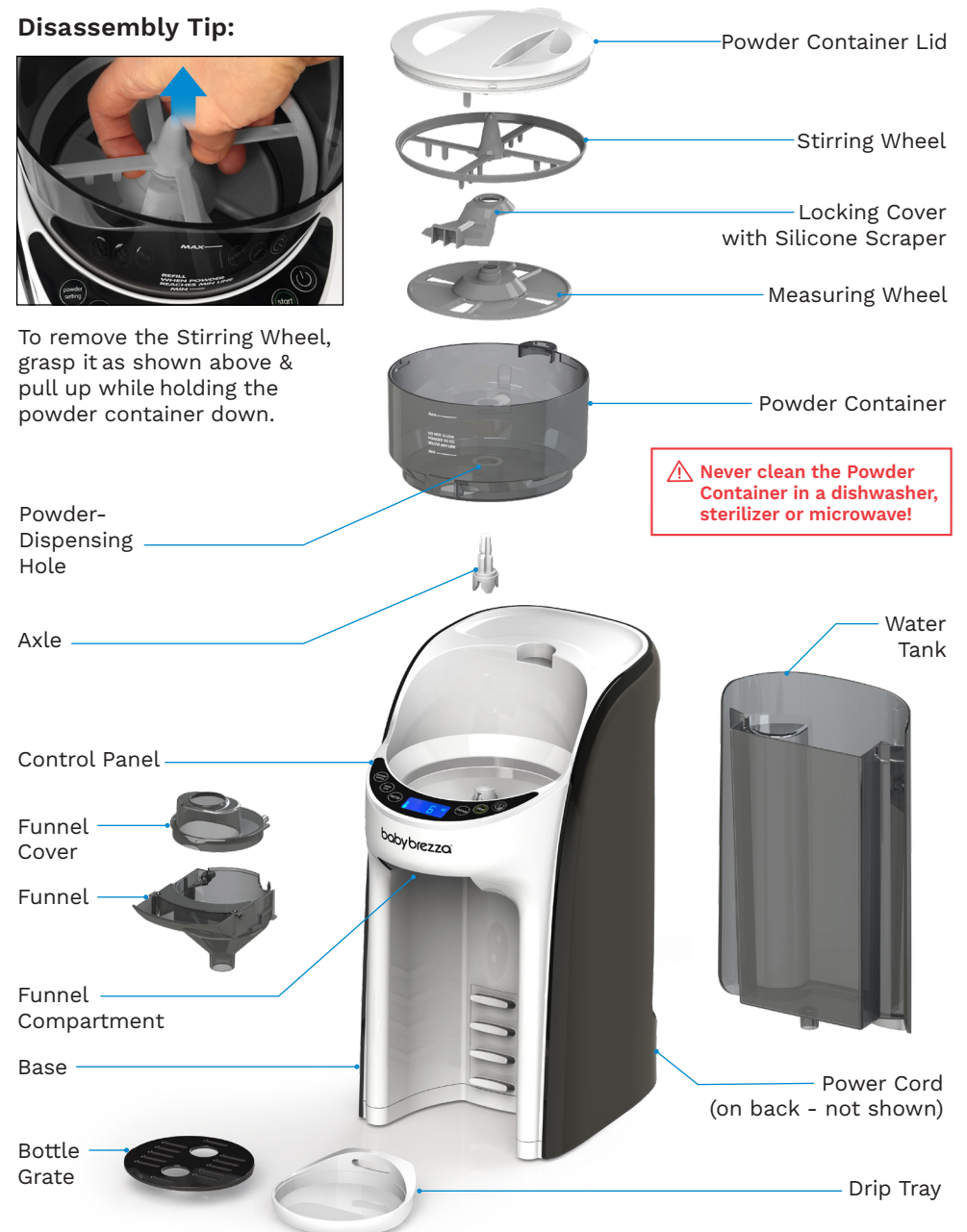
## PARTS

Disassemble and wash all parts (except the base) and dry thoroughly. Assemble as shown on pages 5 & 6.

### Disassembly Tip:



To remove the Stirring Wheel, grasp it as shown above & pull up while holding the powder container down.



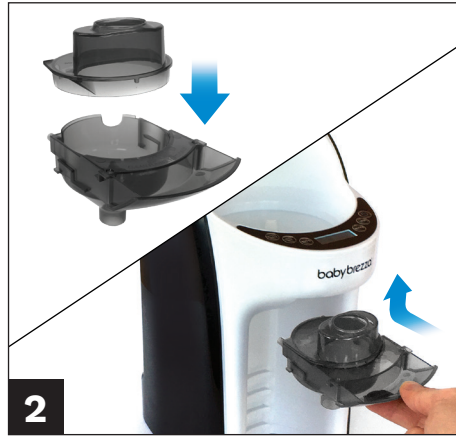


## SET-UP INSTRUCTIONS

Set-up and cleaning videos available at [babybrezza.com/fpainformationcenter](http://babybrezza.com/fpainformationcenter)



After hand washing these parts, make sure they are all **completely dry** before assembly.



Assemble the **funnel & funnel cover**. Then insert funnel assembly into funnel compartment by **sliding it up, then in**.



Place the **axle** on the base as shown.



Now place the **powder container** on the base with the printed markings facing you.

## SET-UP INSTRUCTIONS

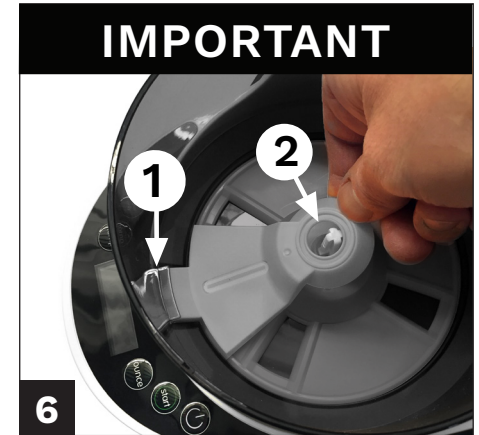
(Continued)



Place the **measuring wheel** into the powder container, fitting it over the axle with the flat side facing down. Make sure the holes in the measuring wheel are in the same position as shown above.



Make sure the **locking cover & measuring wheel** look like this when assembled.



1. Place the front edge of **locking cover** in the recess in the inside/front of the powder container, **UNDER THE TAB**.  
2. Fit hole in locking cover over top of axle. It will not lay completely flat.



Now place the **stirring wheel** on the axle and push down firmly until you hear a click. Make sure the stirring wheel is snapped in place and does not lift up easily.

## PREPARING YOUR FIRST BOTTLE

Now you're ready to add powder and make your first bottle.



1

Carefully pour formula powder into the powder container. Wipe up any spilled formula powder.



2

Make sure that the powder is filled between the MIN & MAX lines on the powder container.



3

Place the powder container lid on the powder container and turn clockwise until it stops.

This will engage the safety switch & lock the powder container onto the base.

To remove the powder container, turn the lid counter-clockwise.

**PLEASE NOTE:** You don't need to remove the powder container or the powder container parts for daily cleaning.



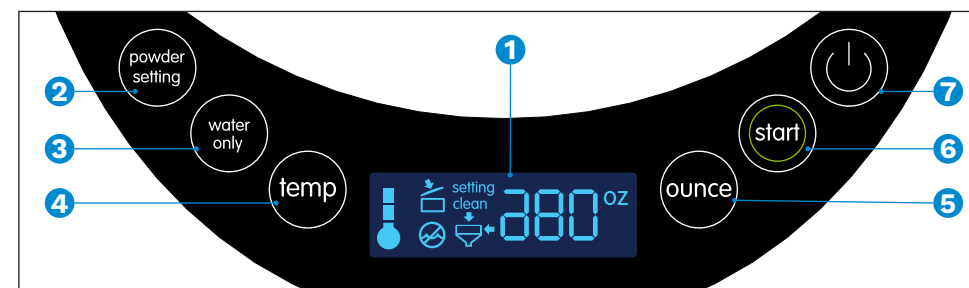
4

Fit the drip tray on the base to fit your bottle height. Adjust it so the mouth of the bottle is as close to the funnel as possible.

**Push the drip tray firmly against the base to set it in place.**

Now let's review the controls on the next page.

## CONTROLS & OPERATION



**1 LCD Display:** Shows selected functions & warnings

**2 Powder setting button:** Press to select setting number for your formula brand and type.

**3 Water only button:** Press to dispense ounces displayed on LCD (selected by the "ounce" button)\*

**4 Temp button:** Press to select your warming temperature.

**5 Ounce button:** Press to select ounces of water dispensed.

**6 Start button:** Press to start dispensing formula

**7 Power button:** Press to turn machine on or off. Press to stop dispensing.

### Temperature Indicator Symbols



Room temperature



Body temperature



Slightly warmer than body temperature

### Powder & Water Settings



**Powder Setting Indicator** - Use the "powder setting" button to choose your powder setting between 1-10.



**Ounce Indicator** - Use the "ounce" button to choose how many ounces of water to mix with powder. 2, 3, 4, 5, 6, 7, 8, 9, 10 ounces of water are available. There is no option to make a 1oz bottle.

### Warning Symbols

The unit will not run if any of these symbols are illuminated on the LCD display.



**Powder Lid Open** - The powder container lid is not closed completely or is not on the powder container correctly. Close the powder container lid completely and correctly when this symbol is illuminated.



**Clean Funnel** - This symbol will illuminate after every 4 bottles are made. When this symbol is illuminated, remove funnel assembly, wash, and dry completely, then place it back into the base. See Page 11 for details.



**Low Water** - Refill water tank when this symbol is illuminated.

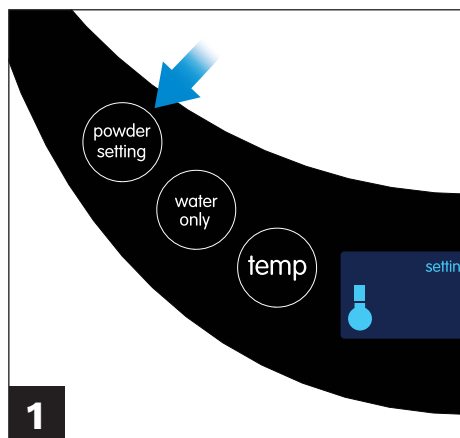


**Funnel Out** - Funnel is removed or not inserted completely. Make sure the funnel is pushed all the way in when this symbol is illuminated.

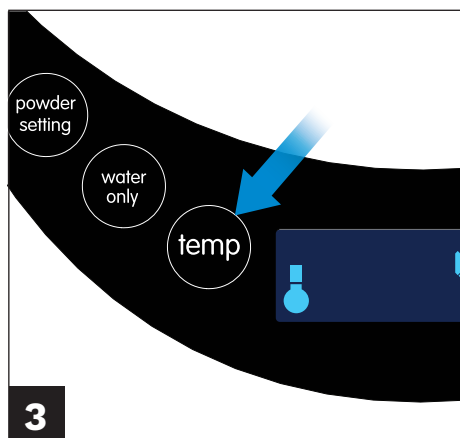
\* To remove all water from the machine, press & hold the "water only" button for 5 seconds. Water will dispense continuously until the machine is empty.

## PREPARING YOUR FIRST BOTTLE (Continued)

Make sure your Formula Pro® Advanced is plugged in and turned on.



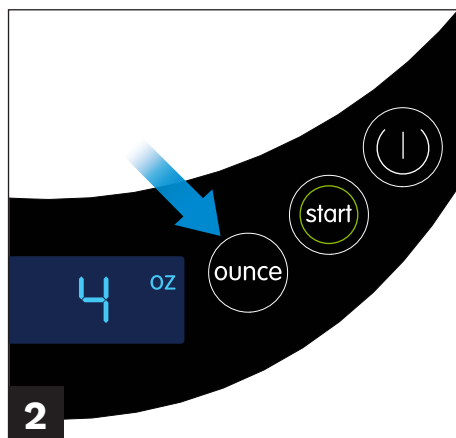
Press the “powder setting” button repeatedly to select your setting 1 - 10.  
**It is essential that you choose the correct setting for your formula brand and type.**  
Go to [babybrezza.com/FPA](http://babybrezza.com/FPA) to find the correct setting for your formula powder.



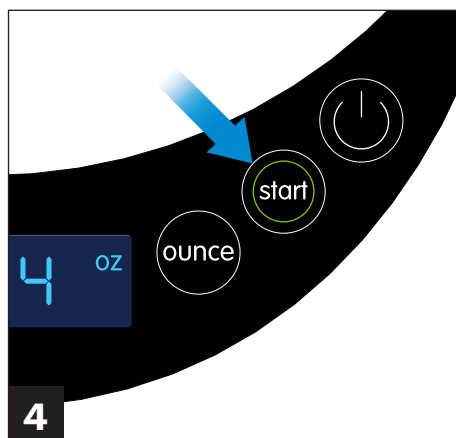
Press the “temp” button to select temperature.

- = Slightly warmer than body temp.
- = Body temperature
- = Room temperature

**The temperature indicator will flash when heating and will stay solid when the set temperature is reached.**



Press the “ounce” button repeatedly to select the ounces of water you want to dispense.  
**Ounce size indicates water volume only. It does not include the volume of powder added when mixing.**



Press the “start” button to dispense formula.  
**The formula pro will remember the setting & ounce size even if it is unplugged or turned off.**  
**You do not need to select a powder setting every time you make a bottle.**  
**You can always change the ounce size or powder setting by pressing the buttons again.**

## PREPARING YOUR FIRST BOTTLE

(Continued)



The Formula Pro® Advanced will dispense powder & water together, then stop automatically when dispensing is complete. Some clumping may occur with some formula powders inherently difficult to mix with water.



Check for clumps and shake or stir the bottle if necessary. Check temperature and feed your baby.



**PLEASE NOTE:** The level will appear higher than the ounce size selected because of added powder volume and/or variance in bottle markings.  
**Example:** 4 ounces of water plus powder volume is approximately 4.5-4.75 ounces depending on your formula powder type.



Refill the powder when the arms of the stirring wheel become visible. This is very important for accurate formula measuring.



## EASY DAILY CLEANING INSTRUCTIONS

It is VERY IMPORTANT to clean the funnel after every 4 bottles made. This will ensure the machine dispenses accurately.



1 Remove Funnel & Funnel Cover by pulling out and down.



2 Wash Funnel & Funnel Cover with warm, soapy water & rinse well.

**Dry completely before re-installing.**



3 Wipe the powder-dispensing hole on the underside of the powder container using a dry paper towel or soft dry cloth.



### Suggestion to make cleaning easier

To make daily cleaning even easier, you can purchase an extra funnel & funnel cover on [BabyBrezza.com](http://BabyBrezza.com). Then you can swap the spare funnel with the funnel that needs to be cleaned.

**NOTE:** you will still need to wipe the powder dispensing hole as shown in Step 3.

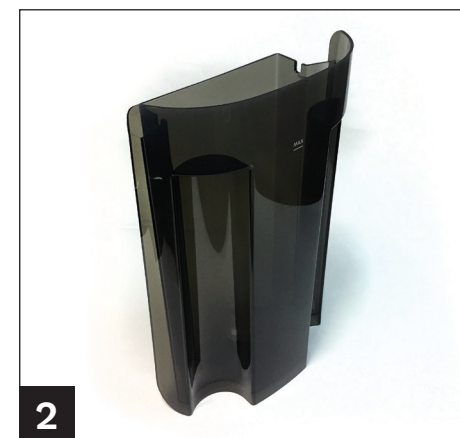
**PLEASE NOTE:** You don't need to remove the powder container or the powder container parts for daily cleaning.

## MONTHLY CLEANING INSTRUCTIONS

Once a month, give your Formula Pro® Advanced a thorough cleaning. Please watch cleaning videos at [babybrezza.com/fpainformationcenter](http://babybrezza.com/fpainformationcenter)



1 Hand-wash all parts shown above with warm soapy water, rinse well and dry thoroughly.



2 Hand wash water tank with warm soapy water, rinse well and dry thoroughly.

## MONTHLY DESCALING INSTRUCTIONS

To prevent mineral scale on the water heater inside the machine, follow these easy steps:

1. Remove the water tank, empty it and fill it with 20oz distilled vinegar & 20oz of purified water. Or purchase Baby Brezza Descaler on [babybrezza.com](http://babybrezza.com) to avoid mixing vinegar and water.
2. Place the water tank on the base of the machine & place a cup larger than 10oz under the funnel.
3. Select "10oz" with the "ounce" button, then press the "water only" button to dispense.
4. Empty the cup, place back under the funnel, then press the "water only" button again to dispense another 10oz.
5. Now unplug the machine, remove the water tank, and empty it. **Let the machine sit for 4 hours.**
6. Wash, rinse and fill the water tank to the MAX line with purified water, then place it back on the base.
7. Plug in the machine, place a cup to catch 10oz water and use the "water only" button to run an 10oz cycle. Dispose of the water dispensed in the cup and then repeat this step to run the entire tank of purified water through the machine. When the "Low Water" indicator turns on, you're done rinsing.
8. Refill the water tank with purified water and return to normal use.

## LONG TERM STORAGE INSTRUCTIONS









It is extremely important to clean the machine and remove all formula powder residue before storage.

If you're going to store your Formula Pro® Advanced for later use, or will not use it for a while, please follow the instructions below:

1. Remove the powder container parts, funnel, funnel cover, drip tray and water tank from the base.
2. Wipe the base with a clean damp cloth and make sure to remove any and all formula residue. Dry the base well.
3. Empty the powder container, wash all powder container parts, dry thoroughly, reassemble, & reinstall on the base.
4. Follow the Monthly Descaling Instructions on page 12, steps 1-7 only. Do not remove or refill the water tank after **step 7**.
5. Now place a cup to catch 10oz water under the funnel, then **press & hold** the "water only" button for 5 seconds.  
Water will dispense continuously until the machine is completely empty, then stop automatically.
6. Unplug the machine, remove the funnel, funnel cover and water tank, dry them both thoroughly and reinstall them on the machine.
7. Your machine is now ready for storage. Pack the machine in its box, or enclose it in a bag to keep it dust free.

## ERROR CODES

In the unlikely event of electrical component error or interruption during operation, the following codes will be displayed on the LCD screen. Pressing and holding the power button will clear the code and operation should return to normal. If the code returns or is unable to be cleared, **please contact Baby Brezza Customer Service**.

- |  |  |   |   |
|--|--|---|---|
|  <b>E1</b> | Indicates an operation error of the motor that turns the powder container parts.                   |  <b>E6</b> | Indicates that hot water has been poured into the water tank and entered the machine. Empty the water tank, refill it with room temperature water, and return it to the base. Press & hold the power button to clear the code, then press & hold the "water only" button to clear the hot water from the machine. |
|  <b>E2</b> | Indicates an operation error of the motor sensor that detects the rotation of the measuring wheel. |  <b>E7</b> | Indicates that the powder container lid has been opened during operation. Make sure the powder container lid is completely closed, press & hold the power button to clear the code. The machine will return to normal.  |
|  <b>E3</b> | Indicates an operation error of the water flow meter that measures the water volume output.        |  <b>E8</b> | Indicates that the funnel has been removed during operation. Make sure the funnel & funnel cover are installed correctly, press & hold the power button to clear the code. The machine will return to normal.   |
|  <b>E4</b> | Indicates an operation error of the temperature sensor that measures water temperature.            |   |   |
|  <b>E5</b> | Indicates an operation error of the water level switch that measures the water remaining.          |   |   |

## TROUBLESHOOTING

Condition	Possible Cause	Possible Remedy
Machine will not start.	Machine is unplugged.	Make sure the plug is securely inserted into the power outlet.
	Machine is not turned on.	Press Power Button to turn on machine.
	Funnel is removed or not fully inserted.	Insert funnel or push front of funnel until flush with machine.
	Water level is below "MIN" line.	Add more water to water tank.
	Powder container is removed or not fully seated.	Make sure powder container is placed on base properly.
	Powder container lid is not completely closed.	Turn Powder container lid clockwise to close completely. See page 7, step 3 for details.
	Powder container lid is on backwards.	Make sure tab on edge of Powder Container Lid is facing the back of the machine and engaged with safety switch. See page 7, step 3 for details.
	Water in Water Tank is too cold. (Temp Symbol on LCD Flashing)	Wait for water to warm up.
	Water in Water Tank is too hot. (Temp Symbol on LCD panel is flashing)	Wait for water to cool down.
Temperature of dispensed formula is too cold.	Water has not yet been heated to correct temperature.	Wait for heater to warm water. Make sure selected temperature symbol stays on solid instead of flashing.
Funnel will not fit all the way in Funnel Compartment.	Funnel cover is not straight on funnel and/or not pushed down completely.	Align tab on front of Funnel Cover with notch in Funnel and push down Funnel Cover completely.
Clean Funnel symbol is on, Formula Pro beeps when start button is pressed.	Funnel and hole on underside of Powder Container require cleaning.	Follow Steps on Page 11 to clean and dry Funnel and hole on underside of Powder Container.
Too much powder dispensed.	Locking cover is not installed correctly.	Check locking cover and make sure the front edge is locked under the tab in the powder container. See page 6, step 6 for details.
	Incorrect powder setting selected.	Make sure to select the correct setting number for your powder type. For details, go to: <a href="http://babybrezza.com/fpa">babybrezza.com/fpa</a>
Not enough powder dispensed.	Powder level in powder container is too low.	Refill Powder Container with more powder.
	Machine has not been cleaned well.	Disassemble, clean by hand-washing, completely dry all parts and reassemble.
	Silicone scraper is not installed correctly.	Make sure silicone scraper is installed correctly.
	Incorrect powder setting selected.	Go to: <a href="http://babybrezza.com/fpa">babybrezza.com/fpa</a> to confirm setting for your powder brand and type, then choose correct setting using the "powder setting" button on the control panel.
Not dispensing water.	Water Tank not fully seated.	Push Water Tank down all the way on Base.
Powder build-up on funnel cover & underside of powder container.	Frequent use without cleaning underside of powder container. See page 11, step 3 for details.	Clean funnel, funnel cover and underside of powder container every 4 bottles.

If you can not remedy problems by using the troubleshooting chart above, **do not return your Formula Pro® Advanced to the store. Please contact Baby Brezza Customer Service at 1-888-396-6552 or visit [babybrezza.com/fpainformationcenter](http://babybrezza.com/fpainformationcenter)** for videos.