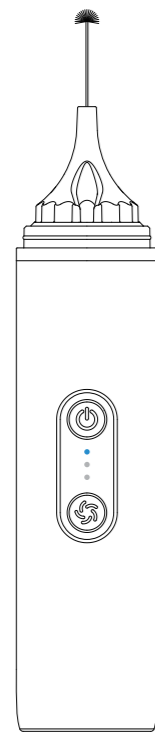


单页尺寸:75*171.25mm

Reenergy
ELECTRIC MASSAGE
EAR DRYER
GE3
USER MANUAL



Thank you for purchasing our product. In order to ensure safety and better performance, please carefully read this manual before use.

Catalog

Precautions 01
 Product Introduction 02
 Functional Description 03
 Instructions 04
 Environmental Protection 05

Get 24/7 Assistance at



Use camera or QR scanner to scan

✉ renergy@afterservice.vip
 🌐 <https://renergy.afterservice.vip>
 ☎ +1(844) 803 0874 (US Toll-free)



Before use, please read this instruction manual carefully and completely, and keep it for future reference!

Precautions

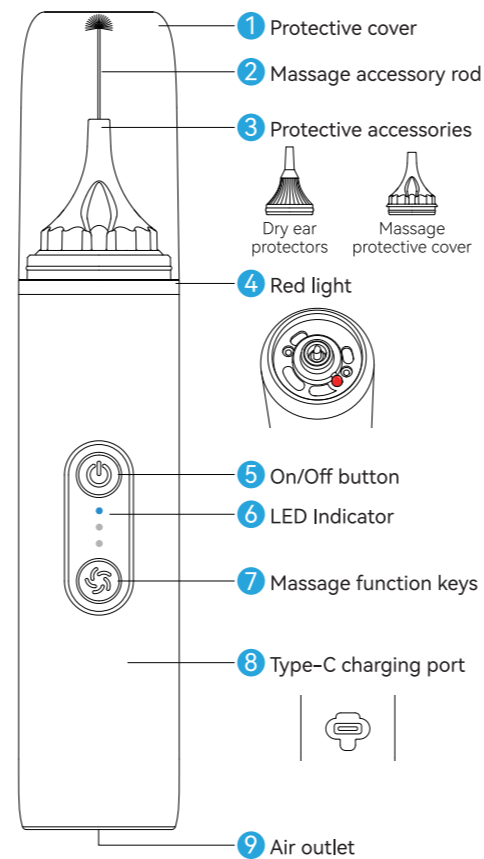
Please read all instructions, warnings and tips carefully before use. Improper use may cause serious personal injury and property damage.

- When using the electric massage function, insert it according to the depth of the user's ear canal. If you feel pain, please stop using it immediately to avoid harm to the human body.
- The ear canal air drying has multiple temperature adjustments. Users should adjust it according to the temperature they adapt to. If you feel uncomfortable, please stop using it immediately and consult your doctor for professional help.
- Children or people with disabilities should use this product under the supervision of an adult or guardian.
- This product is not a toy. Please keep it out of reach of children.
- This product is equipped with a battery. Please keep it away from fire, humidity and high temperature. It may explode due to overheating.
- If you do not use this product, please store it in a dry place.
- Make sure to connect a suitable power supply DC5V to charge the product.
- Do not change or modify the product, or disassemble the internal equipment, otherwise it may damage the product or cause personal injury.
- Do not classify it as household waste. When you no longer use this product, please use the recycling process of the local government and send it to the local electrical equipment recycling station.

Warm Tips: All pictures in the manual are for reference only. Due to product updates or upgrades, there may be differences between the actual product and the picture, please refer to the actual product.

-01-

Product Introduction



Product Parameters:

Product name: Electric massage ear dryer
Input current: 5V=1A
Working environment: -10~45°
Gear adjustment: Supported
Ear dryer temperature: 37~42

-02-

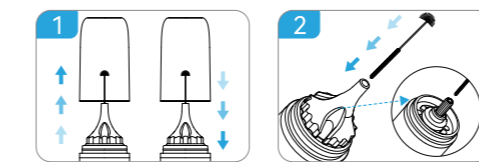
Functional Description

(1) Protective cover

Before use, please hold the main body of the product with one hand and hold the protective cover with the other hand and pull it up to remove the protective cover. After use, hold the main body with one hand and hold the protective cover with the other hand and push it down to close it. (Figure 1)

(2) Massage accessory rod

When using, please insert the massage accessory rod into the fixed silicone inside the main unit, and fix the massage accessory rod firmly before using the ear canal massage function (Figure 2)

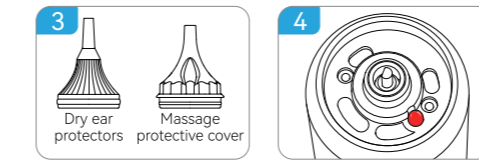


(3) Massage/dry ear protection accessories

Replace the corresponding protective accessory cover according to the massage scenario/dry ear scenario. (Figure 3)

(4) Red light

650NM red light, always on when powered on, off when powered off. (Figure 4)



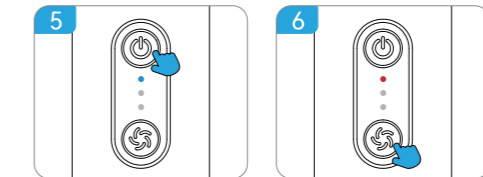
(5) On/off button

Long press to turn on/off, short press to switch to dry ear. High, medium and low wind speed, corresponding to heating temperature high 42°, medium 40° and low 38°. Double-click the dry ear fan to pause/start (Figure 5)

(6) Massage function key

Long press to turn on/off, short press to switch the massage stick to fast, medium, slow rotation speed, double press to switch forward/reverse rotation (Figure 6)

-03-

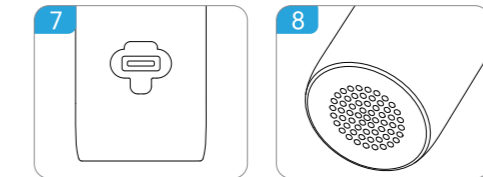


(7) Type-C charging port

Please use a 5V-1A charger and a Type-C charging cable to charge the product. After charging, the USB plug must be installed to prevent liquid from entering and damaging the product. (Figure 7)

(8) Air outlet

When the ear canal air drying function is turned on, please avoid objects blocking the tail air outlet to affect the normal operation of the product. (Figure 8)



(9) LED indicator

The default blue light is on when the machine is turned on, corresponding to the wind speed level of the dry ear function. Double-click the power button to pause, and the corresponding LED light flashes.

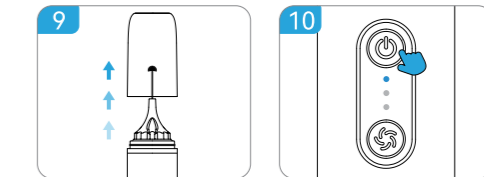
Long press the massage button, the corresponding gear red light is on, and it will automatically jump back to the dry ear blue flashing after 3 seconds.

Instructions

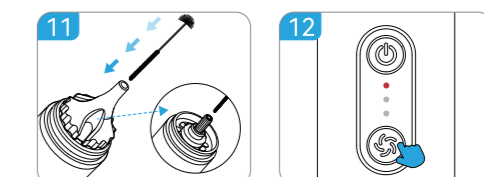
Before using the device for the first time, please check whether the device is fully charged. If charging is required, please use a Type-C cable to charge the device.

- Open the protective cover, press and hold the on/off button to turn on the device, and the dry ear mode is turned on by default. Use the matching dry ear protective cover to dry the ears. Users can adjust the wind speed and temperature according to their own adaptation. (Figure 9) (Figure 10)

-04-



2. Before using the massage function, please assemble the massage accessory rod first. Then long press the massage function button to turn on the massage function. Users can adjust the massage speed according to actual needs. The speed is divided into three gears: high, medium and low. Double-click the button to switch the massage direction between forward and reverse directions. (Figure 11) (Figure 12)



3. The device can be used for ear drying alone or in conjunction with the massage function. When using the ear canal massage function alone, you need to double-click the on/off button to turn off the ear drying fan function. (Figure 13)



Environmental Protection

- Proper disposal:** When disposing of the flusher or its components, follow local e-waste regulations and guidelines and avoid disposing of it with normal household waste.
- Battery recycling:** Recycle rechargeable batteries properly. Check local facilities or collection points for battery recycling.
- Energy efficiency:** Save energy by turning off the flusher when not in use and unplugging the charger when the battery is fully charged.

-05-