

## CEILING POT RACK INSTALLATION GUIDE

KUR221

Copyright © 2021 KES or its affiliates.

All Rights Reserved.

KUR221 .V2.0

### KES LIMITED ONE-YEAR WARRANTY

All parts of the KES product are guaranteed to be free from defects in material and workmanship for a period of one (1) year.

This warranty is made to the original consumer purchaser and shall be effective from the date of purchase as shown on the purchaser's receipt.

During the warranty period, if a defect is confirmed by KES after inspection, KES may, at its sole discretion, repair, provide a replacement of any part or the whole product, or make appropriate amendments.

Damages caused by accident, misuse or abuse of use are not covered by this warranty.

Proof of purchase (your original sales receipt) from the consumer's original purchasing agent must accompany all warranty claims. KES will not be responsible for labor charges and/or damages incurred in installation, repair or replacement, nor for any direct, indirect, incidental or consequential damages, losses, injuries or costs caused by the product. In no event shall the liability of KES exceed the purchase price of the product.

THIS WARRANTY IS THE ONLY EXPRESS WARRANTY MADE BY KES. ANY CLAIMS MADE UNDER THIS WARRANTY MUST BE MADE DURING THE ONE-YEAR PERIOD REFERRED TO ABOVE.

ANY IMPLIED WARRANTIES, INCLUDING THE IMPLIED WARRANTY OF MERCHANTABILITY OR FITNESS FOR A PARTICULAR PURPOSE, ARE LIMITED TO THE DURATION OF THIS WARRANTY. KES AND/OR SELLER DISCLAIM ANY LIABILITY FOR SPECIAL, INCIDENTAL OR

5

### CONSEQUENTIAL DAMAGES.

The above limitations or exclusions apply to you UNLESS the law of the places that you purchased KES product prohibit such limitations or exclusions.

This warranty does not cover any damage to this product due to misuse, abuse, negligence, accident, improper installation, or any use violating the instructions furnished by KES or any use of replacement parts other than genuine KES parts.

If cleaners containing abrasive cleansers, ammonia, bleach, acids, waxes, alcohol, solvents or other such products are used on this KES product, any rights you may have under this warranty will be forfeited.

### WARNING

The generic hardware provided is for concrete wall application. You may need other hardware and installation procedures. Please consult with your local hardware store if you have any questions or concerns about the construction of your walls.

Slight dimension variations can exist, please make sure to measure twice before drilling.

The product must be assembled and installed CORRECTLY. It could possibly cause injury, become unstable and collapse if product is assembled, installed or used incorrectly.

6

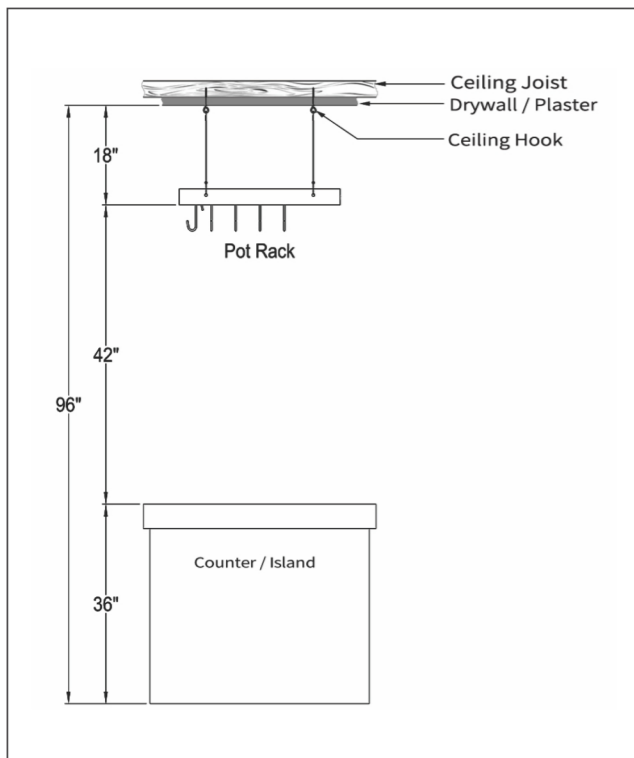
Keep Efficient Simple

### STANDARD POT RACK HANGING HEIGHTS

Left measurement = Ceiling to Floor Height  
Right measurement = Pot Rack Hanging Height

96" Ceiling-18" Pot Rack  
108" Ceiling-30" Pot Rack

(This chart is a suggestion of typical Pot Rack Height and may vary based on your needs.)



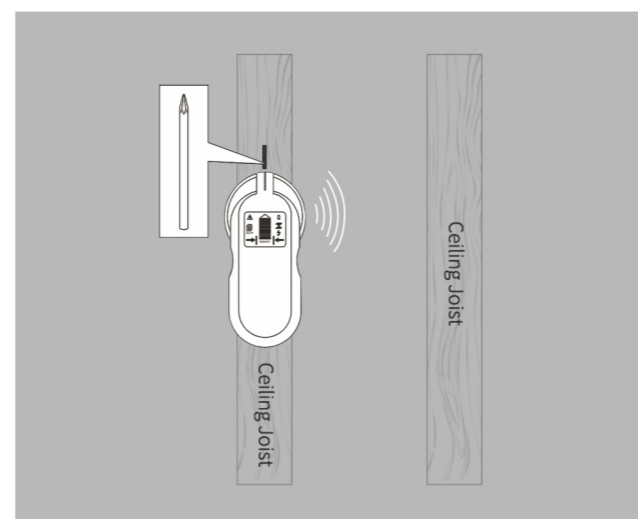
1

### HOW TO FIND YOUR CEILING JOISTS

This pot rack is made of iron so it must be hung from a ceiling joist or a wooden beam. Locate your joists one of two ways:

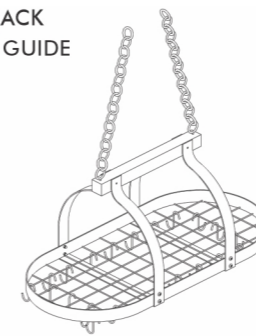
1. Use a stud finder or look for nails or nail heads in the drywall. A stud finder is very simple to use. You simply slide it across the ceiling and wait for a beep or flash to indicate where the solid frame is.
2. If you don't have a stud finder, you can check for joists every 16" to 24", look for nails or nail heads and then tap the surrounding area to find the solid frame.

(Locate your joists before installation. If unsure, consult a qualified technician.)



2

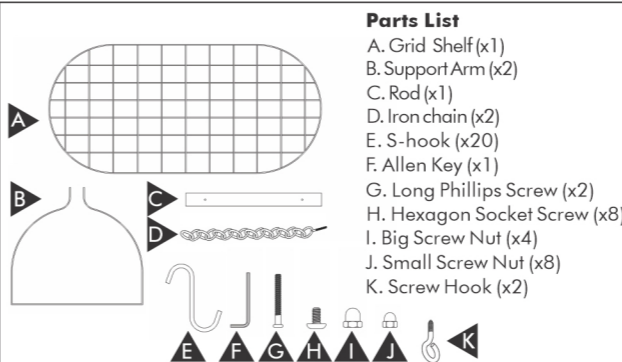
### CEILING POT RACK INSTALLATION GUIDE



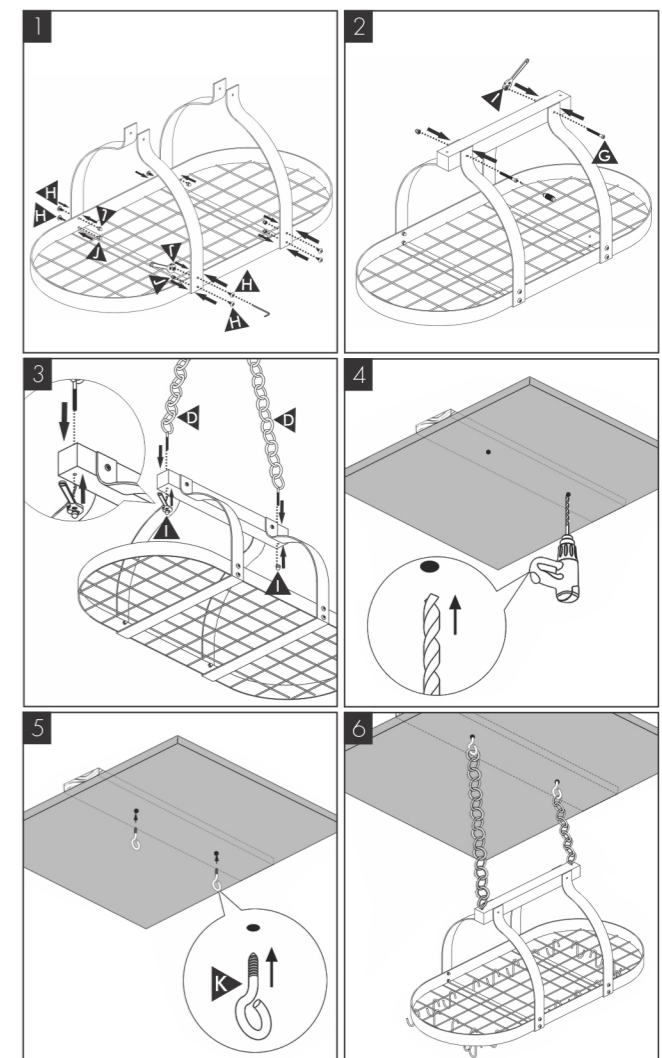
### SCREW MOUNT INSTALLATION

Drill bit size: 1.5-2mm/0.06-0.08"

### HELPFUL TOOLS



3



4