

BUG ZAPPER

Zap T6 Pro



User Manual

CATALOG

1. INTRODUCTION
2. SAFETY INSTRUCTION
3. WHERE AND HOW TO USE
4. BULB REPLACEMENT
5. HOW TO CLEAN
5. TECHNICAL PARAMETER
6. TROUBLE SHOOTING
7. WARRANTY

1. INTRODUCTION

Thanks for purchasing Zap T6 Pro Bug Zapper.

Please check the product for damage before use. If the product is damaged, please do not use it and contact us in time. We will do our best to solve your problem.

The blue-violet light attracts mosquitoes, gnats, Aedes mosquitoes, flies, moths and other insects. Then the high voltage grid will trap and electrocute these insects immediately. This bug zapper is highly energy-efficient. It is designed for continuous use. It is ready to provide you with a long-term mosquito-free environment.

In order to achieve the best effect of killing mosquitoes, please read this manual carefully before use.

2. SAFETY INSTRUCTION

- Do not use it in inflammable and explosive locales.
- Check the local voltage before plugging in.
- Do not touch internal metal grid, because there is a risk of electric shock. Never put anything in the metal grid when using.
- Hang or place the bug zapper out of reach of children.
- Do not disassemble any fixed part of the product to avoid electric shock.
- If the bulb or other parts of the product are damaged, it must be repaired by the manufacturer or a professional.
- Clean the metal grid and tray regularly. Unplug the bug zapper before cleaning. Clean the metal grid and tray with the matching brush every week.
- Avoid violent shaking to avoid damaging the bulb or other parts.

3.WHERE AND HOW TO USE

Just plug in the power and the bug zapper will start to work. The blue-violet light of the bug zapper is relatively weak compared to natural light and bulb light, so it should not be used when the light is strong. Otherwise, the insects will not be attracted by the blue-violet light of the bug zapper.

INDOOR:

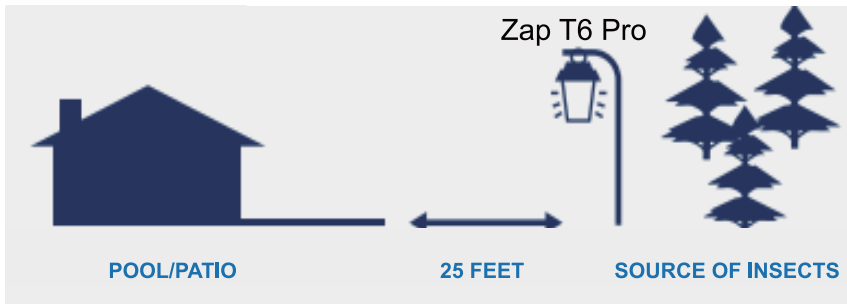
The bug zapper can be used in the bedroom, living room, hotel, restaurant, etc.

The correct ways to use the bug zapper indoor are as follows:

- A. Keep the bug zapper in a dark place when it is working.
- B. Close doors and windows to prevent more mosquitoes from being attracted.
- C. Turn on the bug zapper 30 minutes before humans enter the area.
- D. Keep away from flammable things such as paper, clothes, curtains, quilts, etc.

OUTDOOR:

The bug zapper can be used in the courtyard, garden, patio, camping, night fishing, etc.

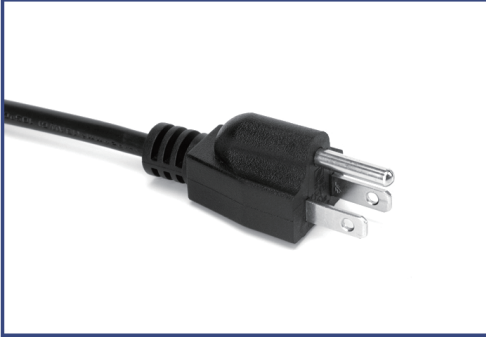


The correct ways to use the bug zapper outdoor are as follows:

1. Hang the bug zapper 3 feet above the ground.
2. place the bug zapper 25 feet away from the area intended for human activity
3. Position the bug zapper between the source of insects (woods, lowlands, etc.) and the protected area.
4. Keep away from flammable things such as petrol, diesel, etc.

In order to improve the effect of killing insects, please clean up the insects on the metal grid regularly. Please unplug the power cord before cleaning. Open the base and take out the metal mesh, and then clean it with a soft brush.

4. BULB REPLACEMENT



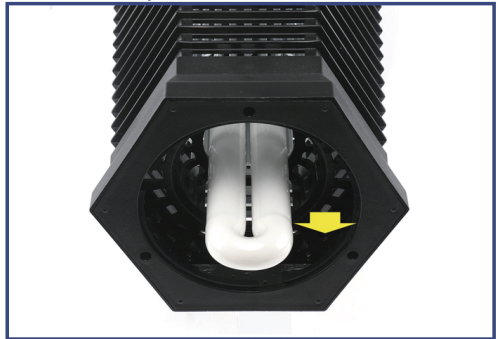
Step1. Unplug the bug zapper



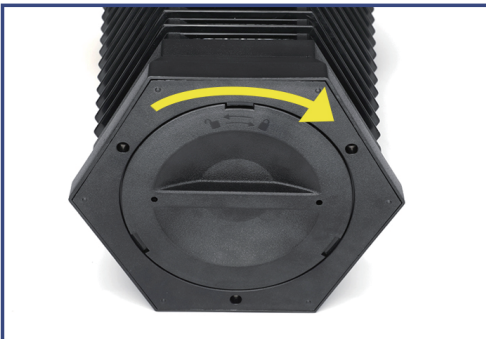
Step2. Follow the arrow to rotate the tray and remove



Step3. Remove the bottom screw



Step4. Pull out and replace the bulb



Step5. Recover the bottom part and tray

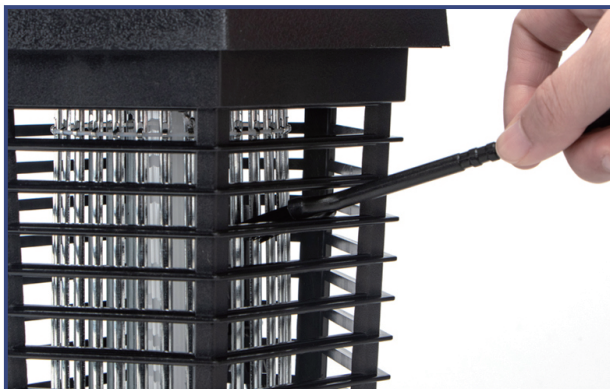


When installing the bottom part, the bottom of the bulb should be in the rectangular groove

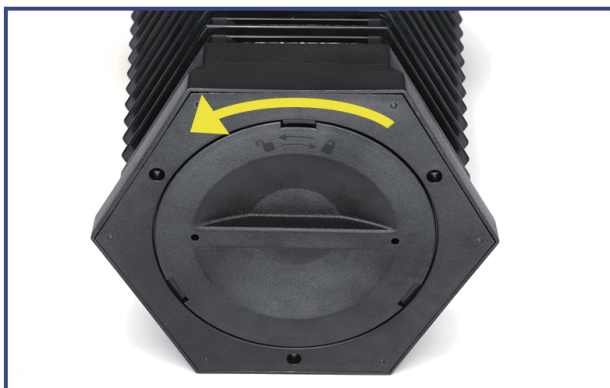
Notice: The effect of blue-violet light to attract insects diminishes over time. Although the bulb seems to be working, it should be replaced every season to achieve the best effect of attracting insects.

5.HOW TO CLEAN

(Unplug the power before cleaning)



Step1. Clean the metal grid



Step2. Remove the bottom tray



Step3. Clean the tray up

6. TECHNICAL PARAMETER

Product Model: Zap T6 Pro

Input Voltage: 90-130V AC,60Hz

Rated Power: 15 W

High voltage metal grid: 3800-4200V

Protected Area: 1/2 acre

7. TROUBLE SHOOTING

Caution: Unplug the bug zapper before servicing

Problem	Possible Cause	Correction
A. The bulb does not light and the metal grid has no voltage.	<ol style="list-style-type: none">1. There is no electricity.2. The bulb is not installed correctly.3. The bulb burned out.4. The starter is faulty.	<ol style="list-style-type: none">1. Check fuse or circuit breaker. Check extension cord.2. Check if the bulb is installed correctly.3. Replace the bulb.4. Contact the manufacturer to replace the starter.
B. The bulb is on, but there is no voltage on the metal grid.	<ol style="list-style-type: none">1. Grid short-circuit.2. Transformer malfunction.	<ol style="list-style-type: none">1. Check and clean the grid.2. Contact the manufacturer to replace the transformer.
C. Intermittent or continuous sparks appear between the grid bars.	<ol style="list-style-type: none">1. The distance between grid bars is too small.2. There is something on the grid.	<ol style="list-style-type: none">1. Unplug the bug zapper then adjust the grid to the normal distance.2. Clean the grid.
D. The bulb is on, but it no longer attracts insects.	The effect of the bulb to attract insects decreases with the use of time.	Replace the bulb. Please refer to the bulb replacement section in the user manual.

8.WARRANTY

One-year warranty.

If you have any problem, please contact the seller on Amazon. We will do our best to solve your problem.

This warranty does not cover normal wear of product and damage caused by incorrect operation of buyer.

Warranty Policy

One Year Limited Warranty