

DREO

Countertop Water Filter WF511

USER MANUAL



Thanks for Choosing DREO!

Your support means the world to us.
We hope you enjoy our product as much
as we did creating it.



CONTENTS

01	IMPORTANT SAFETY INSTRUCTIONS	1-3
-----------	-------------------------------	-----

02	KNOWING YOUR WATER FILTER	4-5
-----------	---------------------------	-----

03	USING YOUR WATER FILTER	6-11
-----------	-------------------------	------

04	CLEANING AND MAINTENANCE	12-13
-----------	--------------------------	-------

05	TROUBLESHOOTING	14-15
-----------	-----------------	-------

06	DREO CUSTOMER CARE	16
-----------	--------------------	----

IMPORTANT SAFETY INSTRUCTIONS

01



READ ALL CAUTIONARY MARKINGS ON THE APPLIANCE AND SAFETY INSTRUCTIONS IN THE USER MANUAL BEFORE USE.



DO NOT

DO NOT block or cover the spout while in operation.



DO NOT

DO NOT touch or hold the mains plug with wet hands.



DO NOT

DO NOT let children or pets play with this appliance.

GENERAL SAFETY

- 1.Children shall not play with the appliance. Cleaning and maintenance shall not be performed by children without supervision.
- 2.Use the appliance as described in the user manual only. Any other use not recommended in the user manual may cause fire, electrical shock, or personal injury.
- 3.This appliance can be used by children aged above 8 years and persons with reduced physical, sensory or mental capabilities or lack of experience and knowledge if they have been given supervision or instruction concerning use of this appliance in a safe way and understand the hazards involved.

LOCATION SAFETY

- 1.Always place this appliance on a firm, flat and level surface to avoid dropping or tilt.
- 2.Always place this appliance 2 feet (60cm) above the floor, 12 inches (30cm) away from the wall or wooden furniture.
- 3.DO NOT move this appliance while it is on.
- 4.DO NOT attempt to repair any parts on this appliance. Doing so will void your warranty. The inside of this appliance contains no user serviceable parts., All servicing should be performed by qualified personnel only.

ELECTRICITY SAFETY

- 1.Make sure that the voltage of your electricity supply is the same as that indicated on the appliance.
- 2.Risk of Electric Shock. Disconnect power before servicing, cleaning or leaving the appliance unused for a long period of time. Keep your hands dry when plugging/unplugging.
- 3.To avoid fire hazard, NEVER put the cord under rugs, near heat registers, radiator, stoves or heaters.
- 4.Do not use this appliance if the cord has been damaged to avoid fire or electric hazard.
- 5.Keep the cord out of heavy traffic areas and where it will not be tripped over.
- 6.Do not operate any water filter with a damaged cord or plug. Discard the appliance or return to an authorized service facility for examination and/or repair.
- 7.Do not run cord under carpeting. Do not cover cord with throw rugs, runners, or similar coverings. Do not route cord under furniture or appliances. Arrange cord away from traffic area and where it will not be tripped over.
- 8.This appliance has a polarized plug (one blade is wider than the other). To reduce the risk of electric shock, this plug is intended to fit in a polarized outlet only one way. If the plug does not fit fully in the outlet, reverse the plug. If it still does not fit, contact a qualified electrician. Do not attempt to defeat this safety feature.

FOR HOUSEHOLD USE ONLY

Gentle Reminder



Check the appliance regularly and refer to TROUBLESHOOTING or contact our customer support if you need any assistance.

Product Specifications

Model	DR-KFW001
Input	AC 120V 60Hz
Rated Power	20W
Capacity	Raw Water Tank: 170 oz (5L) Pure Water Pitcher: 50 oz (1.5L)
Filter	PPC Filter RO Filter Post Carbon Filter
Temperature	40°F-100°F (5°C-38°C)

TDS

Total dissolved solids (TDS) is the total amount of solids dissolved in the water, including soluble hydrogen carbonate ions, chloride salts, sulphates, calcium, magnesium, sodium, potassium, volatile solids and non-volatile solids. Its concentration will affect the taste of drinking water. A higher TDS level indicates more impurities, while a lower level signifies purer water.

Water Safety

- For the first use, it is necessary to clean the entire water system. This process flushes the protective fluid from the surface of the filter to ensure better purification. The protective fluid is food-grade, and the wastewater produced during the cleaning process is milky white and harmless.
- Airborne microorganisms and bacteria can contaminate purified water after exposure. Do not consume water that has been stored for over 48 hours post-filtration. Instead, pour it back into the raw water tank and re-filter before use.
- To ensure optimal filtration and prolong filter life, use raw water that meets the recommended quality standards.
- It is recommended to store used filters in the refrigerator if the water filter is not used for a long time.

Water Filtration Process

Stage 1: PPC Filter

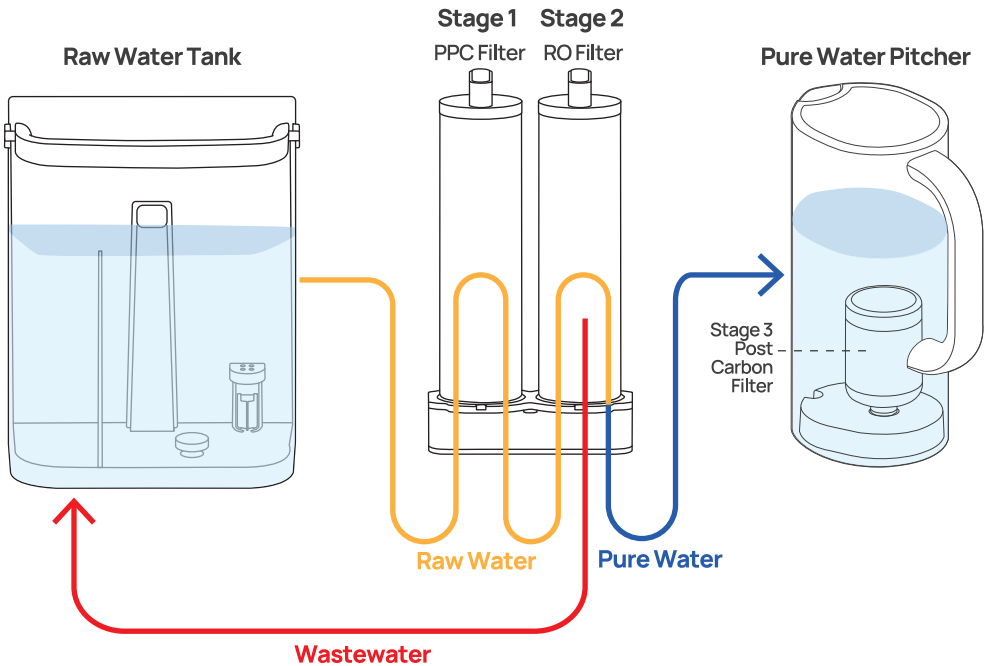
The PPC filter is a combination of sediment PP, activated carbon, and anti-scaling layer. It removes sand, silt, sediment, rust and particles from water. Activated carbon eliminates chlorine taste and odors and then conditions the water before it is treated by the reverse osmosis membrane.

Stage 2: RO Filter

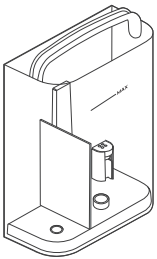
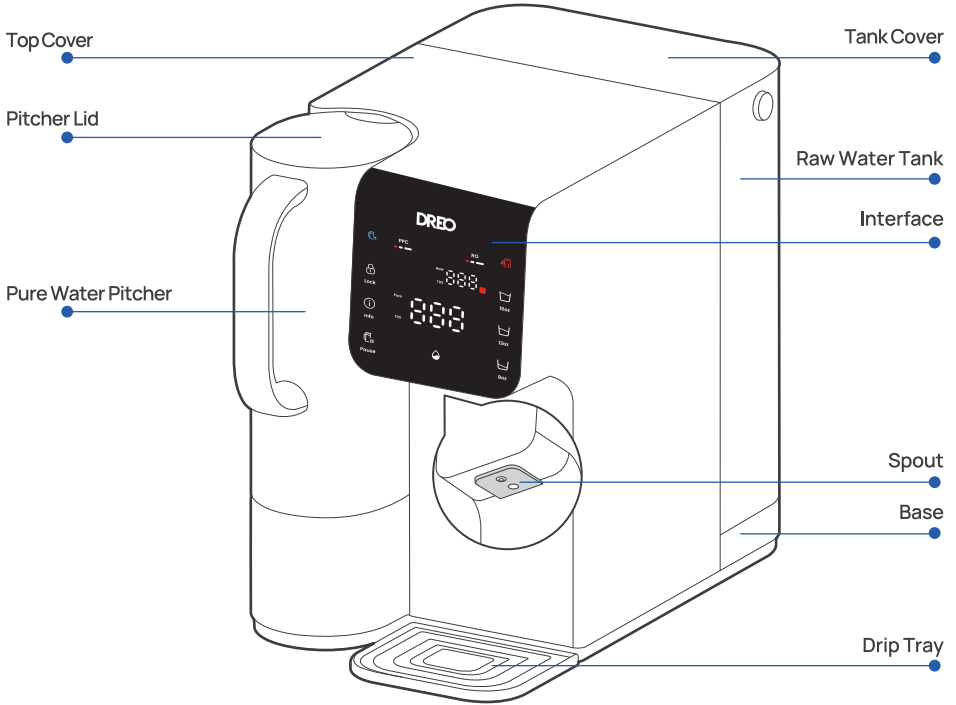
Reverse osmosis (RO) water systems use a semi-permeable membrane to filter impurities from the water down to 1/10,000 of a micron. Pure water passes through, while contaminants are rejected and flushed away.

Stage 3: Post Carbon Filter (Optional)

The post carbon filter is made of high quality activated carbon. It is designed to remove volatile organic compounds, enhance the taste and prepare the water for consumption.



Package Contents



Raw Water Tank x 1
(Pre-installed)



PPC Filter x 1
(Pre-installed)



RO Filter x 1
(Pre-installed)



Pure Water
Pitcher x 2

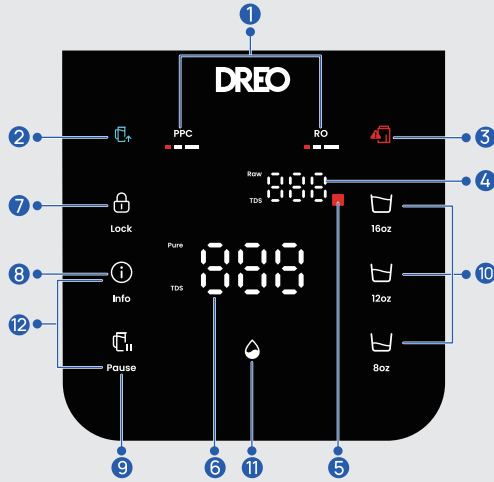


Drip Tray x 1



Post Carbon
Filter x 1

Interface



Indicators

1 PPC & RO Filter Life Indicators

Indicator	Filter Life
	> 60%
	30%-59%
	< 30%
	Replace Filter

2 Autofill Indicator

Lights up automatically when filtering/refilling the pure water pitcher.

3 Refill Indicator

Flashes when the raw water tank needs to be refilled or water has to be replaced.

4 Raw Water TDS Display

5 Raw Water TDS Indicator

6 Pure Water TDS Display

Control Panel

7 Child Lock

Touch to enable/disable Child Lock.

8 Info

Touch to display/undisplay filter life and raw water TDS.

9 Pause

Touch to pause/resume autofill.
- Autofill continues working when users touch again or place the pure water pitcher or raw water tank back.

10 Dispensing Volume

Touch to select water volume among 16 oz, 12 oz, and 8 oz.

11 Dispense Water

Touch to dispense water/stop dispensing.

12 Mute

Long press and for 3s to mute/unmute the beep and touch sound.

Raw Water TDS Indicator Light

The amount of total dissolved solids (TDS) will affect the taste of drinking water.

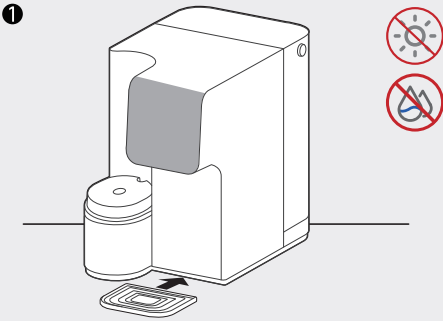


TDS Level	TDS Indicator Light Color
0-499	Off
500-998	Yellow (Affect purification efficiency)
≥ 999	Red (Affect filter life and purification efficiency. It is recommended to change the water source.)

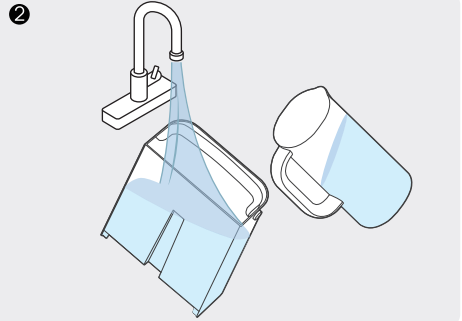
USING YOUR WATER FILTER

03

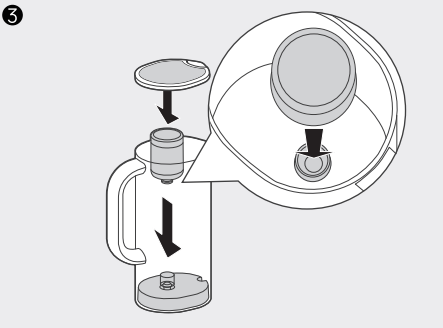
Before First Use



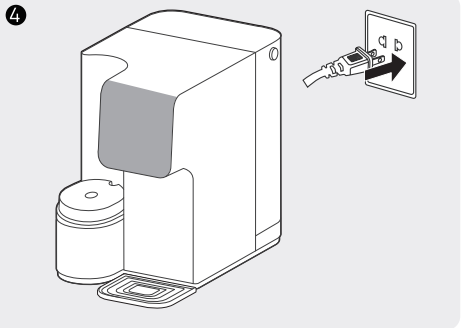
Place the water filter on a flat dry surface away from sunlight and dirt. Place the drip tray.



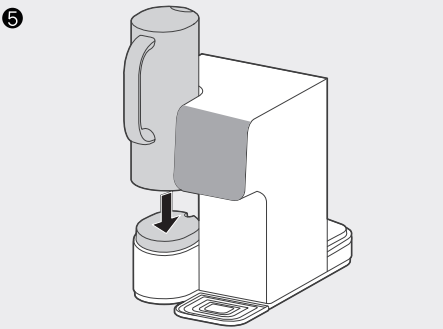
Remove and rinse the tank and pitcher, then dry out with a soft cleaning cloth.



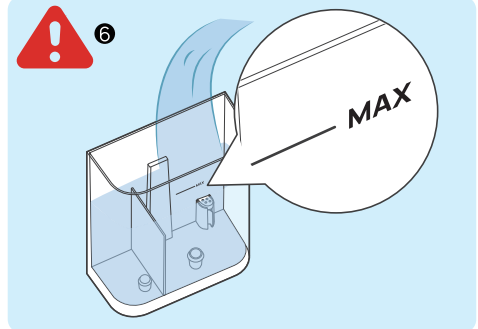
Insert the post carbon filter into the pitcher, then close the pitcher lid. (Optional, for improving water taste)



Plug in the water filter.

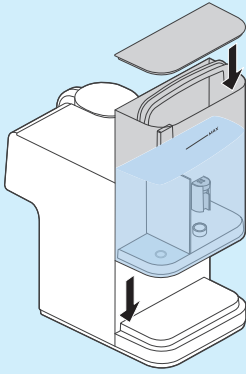


Put the pitcher in position and press until you hear a beep sound.



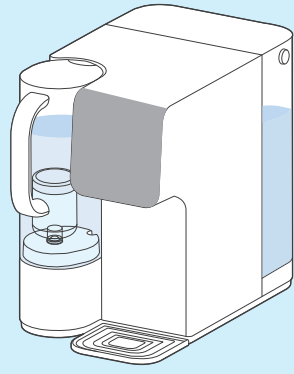
Fill the water tank ONLY with fresh tap water below the MAX water line.

7



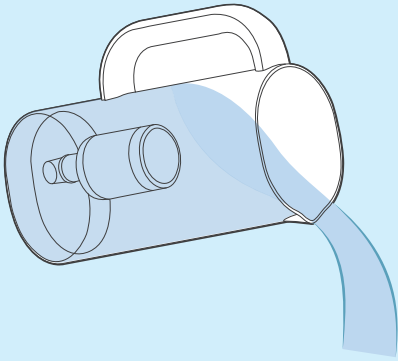
Place the raw water tank in position, press until it firmly sits on the base without any gap, then close the cover.

8



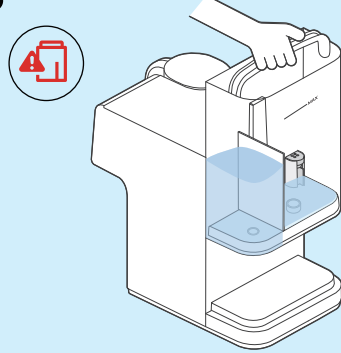
The system automatically flushes and refills the pure water pitcher.

9



Pour out the water in the pitcher.

10



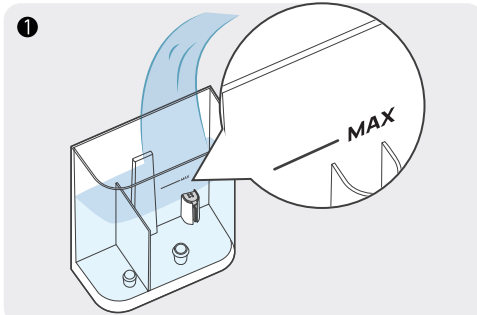
When  lights up, remove the raw water tank and pour out the wastewater.

11

For **initial use** or after **filter replacement**, repeat the step 6 to 10 once more, then check if the purified water in the pitcher is completely clear.

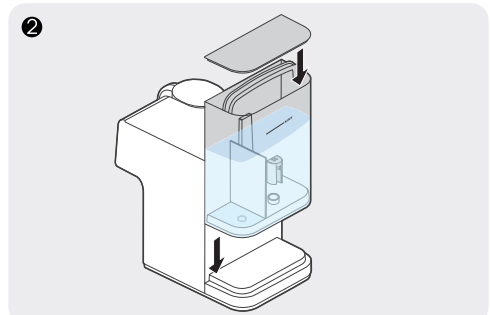
Daily Use

Filling / Refilling



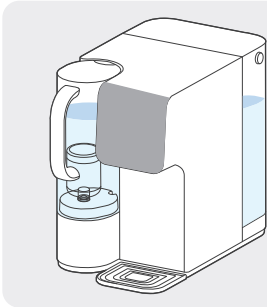
Fill the water tank with fresh tap water below the MAX water line.


- It is recommended to only add tap water.
- DO NOT add oil, dairy products, sparkling water, carbonated beverages, etc. to the raw water tank.



Place the raw water tank in position, press until it firmly sits on the base without any gap, then close the cover.

Filtering

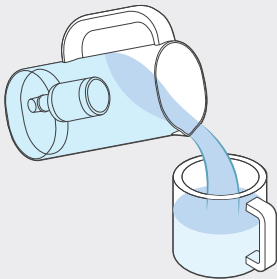


The system will automatically filter water and refill the pure water pitcher. You can touch  to stop.

Note: The system will stop filtering water when it is time to refill the raw water tank, and will automatically flush for 5s when the pitcher is full.

Dispensing


Opt 1



Pour out the purified water directly from the pure water pitcher.


Opt 2



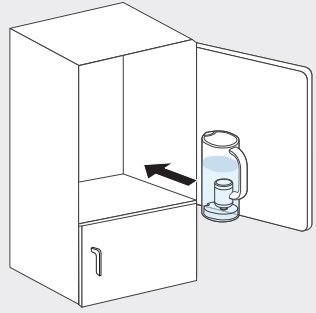
Touch  to dispense water and touch again to stop at desired volume.

Opt 3



Select the dispensing volume then touch  to dispense the water.

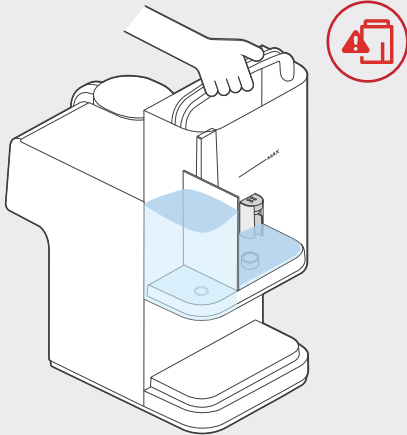
Opt 4



You can also remove the pure water pitcher and place it in the refrigerator section of your fridge to make cold water.

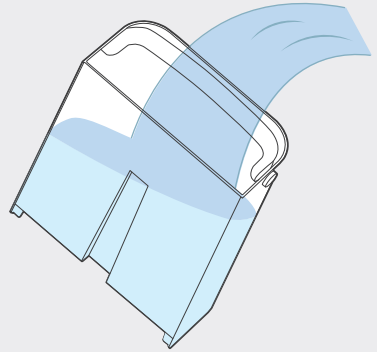
Pouring

1



When  lights up, remove the raw water tank and pour out the wastewater.

2



Rinse the raw water tank and refill it.

Filter Replacement

Filter Life Indicators

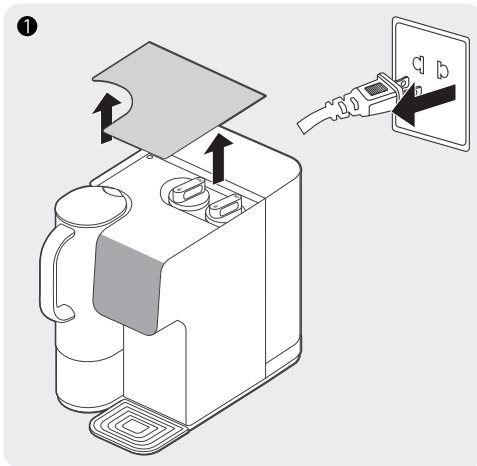
	>60%
	30%-59%
	<30%
	Replace Filter



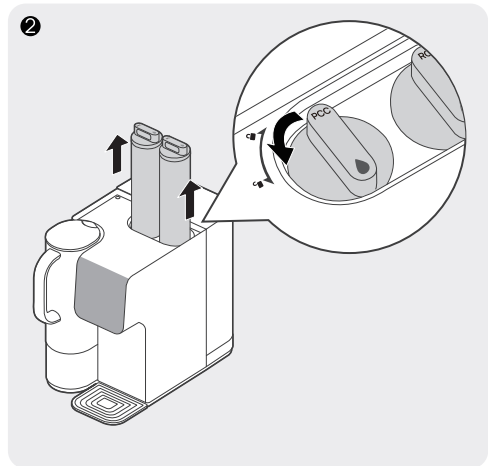
- Please replace the filter regularly according to the filter life indicator or the recommended filter replacement cycle.
- Only DREO filter can be used for replacement. The actual filter life depends on the water quality and daily water usage.
- If only the last bar of the indicator light remains on, it means the filter is about to expire. A steady red light indicates that the filter has expired. Please replace the filter promptly.

Filter	Model	Recommended Replacement Cycle	Note
PPC Filter	DR-KPA017	530 Gal (2000 L) Approx. 6-12 months	Shop new filters at www.dreo.com
RO Filter	DR-KPA018	1050 Gal (4000 L) Approx. 24 months	
Post Carbon Filter	DR-KPA016	Approx. 6 months	

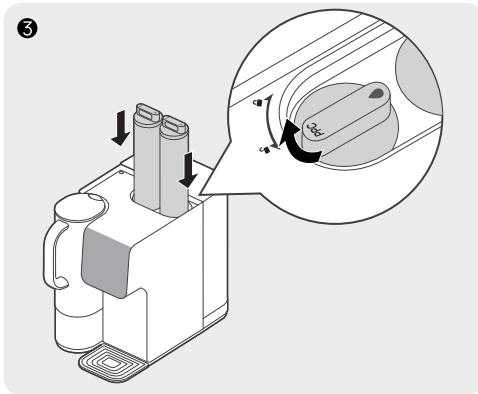
How to Replace Filter




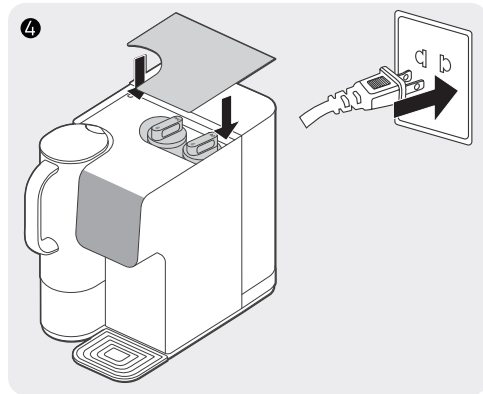
1 Unplug the water filter and open the top cover.



2 Rotate the old filter counterclockwise to until it stops, then pull it out.







Put a new filter into the corresponding compartment and rotate clockwise to until it stops. 
Note: Ensure the filter is placed in the correct compartment.



Close the top cover and plug in the water filter.

5 Reset the tracking of filter life, and the new filter is ready for use.

PPC Filter Life Reset	Long press  and  for 3 seconds. <small>Lock 6oz</small>
RO Filter Life Reset	Long press  and  for 3 seconds. <small>Lock 16oz</small>

6 Flush the system with 2 tanks of tap water as instructed in step **6** to **10** of the "Before First Use" section.

Note:

- After the first use or filter replacement, bubble rolling in the raw water tank is a normal exhaust phenomenon of the filter.
- It is normal for tiny bubbles or white "powder" to appear in the water filter. This is caused by dissolved air in the water forming small, dense bubbles. With repeated use of water, the bubbles will gradually decrease.
- Do not add water that is visibly dirty or contains sediment into the raw water tank.
- The water temperature in the raw water tank needs to be between 40°F-100°F.
- When cleaning the water filter, do not use corrosive solutions to avoid fading or corrosion on the surface.
- Before changing the water, remove the raw water tank, pour out the remaining water and refill it.
- Do not pour any water source, liquid, or foreign object other than room-temperature tap water into the water filter.
- It is recommended to store used filters in the refrigerator if the water filter is not used for a long time.

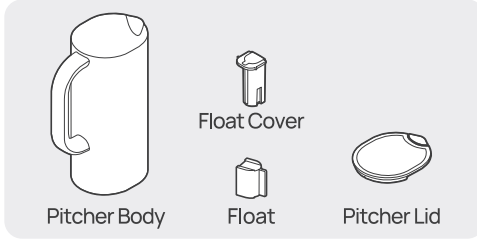
CLEANING AND MAINTENANCE

04

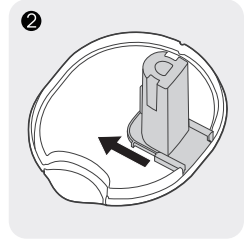
Cleaning

RECOMMENDED ONCE A WEEK

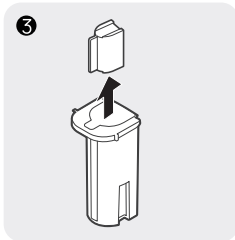
Pure Water Pitcher



Rinse the pitcher body and dry it with a soft cleaning cloth.



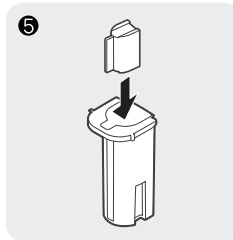
Remove the float cover from the pitcher lid.



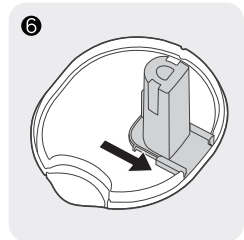
Take out the float from the float cover.



Rinse the pitcher lid, float cover, and float, then dry thoroughly.

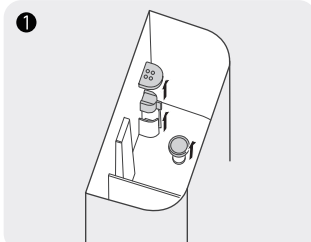
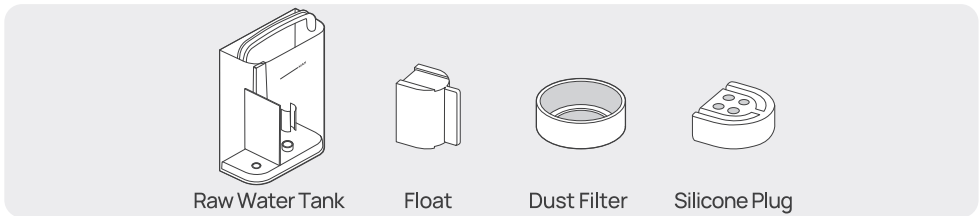


Place the float back into the float cover.

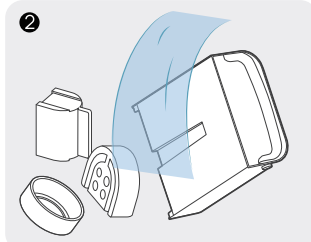


Secure the float cover in place until you hear a click.

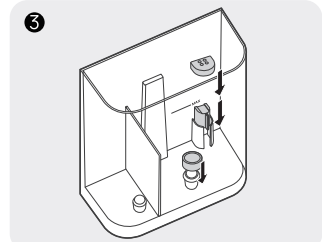
Raw Water Tank



Remove the silicon plug, float, and dust filter from the raw water tank.



Rinse them and the tank respectively, then dry with a cleaning cloth.



Assemble the silicon plug, float, and dust filter securely into place.

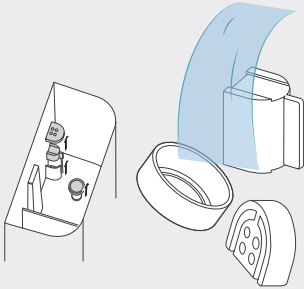
Note:

- DO NOT place in dishwasher.
- DO NOT clean with sharp or abrasive materials.

Descaling

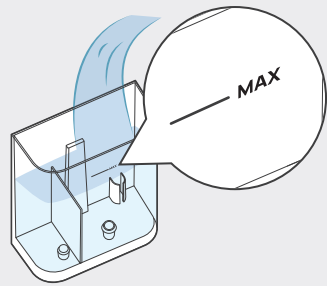
RECOMMENDED ONCE EVERY THREE MONTHS

1



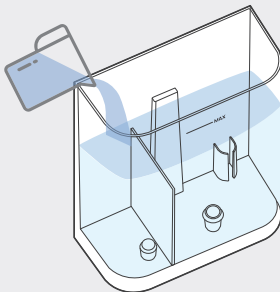
Remove the silicon plug, float, and dust filter from the raw water tank and rinse them with water. If there is any scale, clean it with a brush.

2



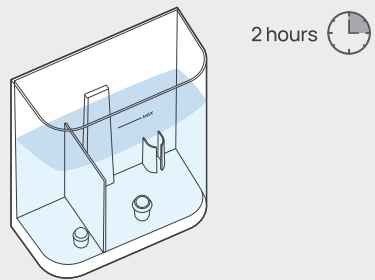
Fill the water tank with fresh tap water below the MAX water line.

3



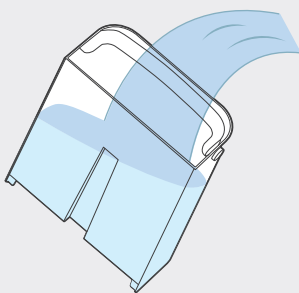
Add 1 cup / 240ml white vinegar and allow it to dissolve completely.

4



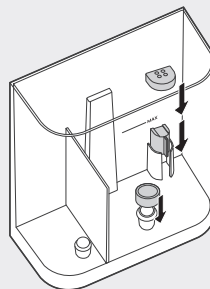
Let the solution sit in the tank for 2 hours, then pour it out.

5



Rinse the tank with clean water and dry thoroughly.

6



Assemble the silicon plug, float, and dust filter securely into place.

WasteWater Treatment

The wastewater produced by reverse osmosis (RO) system can be reused in several practical ways to reduce waste and conserve resources:

Irrigating Plants: Suitable for salt-tolerant plants; avoid using it for sensitive plants.

Flushing Toilets: Ideal for saving tap water in homes or offices.

Cleaning: Useful for cleaning driveways, sidewalks, floors, and other non-potable purposes.

Car Washing: Can be used with caution; rinse with clean water afterward.

Cooling Water: Suitable for cooling in industrial or household equipment, like air conditioning condensers.

Laundry: Can be used for the first rinse cycle, followed by a clean water rinse.

Gardening: Useful for rinsing flower pots and cleaning gardening tools.

Consider the mineral and salt content of wastewater and its suitability for different uses. Some applications may require treatment or dilution to avoid negative effects.

TROUBLESHOOTING

05

Below are solutions to common issues. If the problem persists, please contact our customer service for further assistance.

Problem	Possible Cause	Solution
The system does not filter water	The raw water tank or the pure water pitcher is not in place.	Pick them up and put them back down to ensure they are securely in place. Make sure that the floats in the tank and pitcher lid are correctly installed.
	The pitcher lid is not closed or the float is not installed properly.	Close the cover until a beep is heard. Make sure that the float is installed correctly as instructed in section "Cleaning".
	Water shortage in the raw water tank	Remove the raw water tank and pour out the remaining water, then refill it and place it back.
	Filters are not installed properly.	Remove the filters and install them according to the instructions.
	Machine damage	Contact customer service.
The system continues filtering water even when the pitcher is full.	If the raw water TDS level exceeds 800, the system will automatically flush with pure water from the pitcher.	Touch the Pause button to stop the filtering process. Touch it again when you're ready to resume filtering.
Inconsistent TDS value between TDS test pen and LED display	TDS test pens on the market often have large value deviations, with even the same model showing different errors. Additionally, the TDS value is influenced by water temperature.	The TDS value deviation of up to 50 for pure water is normal and safe for drinking. If the deviation exceeds 100, please contact our customer service.
LED display off	Not connected to power	Make sure that the water filter is properly connected to a powered outlet.
Low water flow during filtration	The filters are expired and have not been replaced in time.	Replace the corresponding filters in time.
	Voltage mismatch	Make sure that the voltage indicated is the same as your local supply.
	Low water temperature	Use the water within the temperature range of 40°F-100°F/ 5°C-38°C.
	Raw Water TDS > 999	Change the water source.
	The raw water tank or the pure water pitcher is not in place.	Pick them up and put them back down to ensure they are securely in place.

Poor aftertaste or bad smell from the purified water	The filters are expired and have not been replaced in time.	Replace the corresponding filters in time.
	The water filter has not been used for a long time.	Flush the system with 2 tanks of tap water as instructed in step ⑥ to ⑩ of the "Before First Use" section.
	The raw water tank or the pure water pitcher needs cleaning.	Clean them as instructed in section "Cleaning and Maintenance".
Error code "E1" on display	Water temperature in the raw water tank is lower than 40°F/5°C or higher than 100°F/38°C.	Keep water temperature in the raw water tank within the range between 40°F-100°F (5°C-38°C).
There are small bubbles in the pure water pitcher	It is normal for tiny bubbles or white "powder" to appear in the pure water pitcher. This is caused by dissolved air in the water forming small, dense bubbles. With repeated use of water, the bubbles will gradually decrease.	The water is safe to drink.
Water leaks from the pure water pitcher	The pure water pitcher is not in place when the machine filters water.	Put the pitcher in place.
Water leaks from the raw water tank	The raw water tank is not descaled for a long time.	Descal the raw water tank regularly as instructed in section "Cleaning and Maintenance".
Water leaks from the machine inside		Contact customer service.
The purified water has an odor after first use or filters replacement	The filters is not completely flushed.	Flush the system with 2 tanks of tap water as instructed in section "Before First Use".
The purified water has an odor after using for a period of time	The water filter has not been used for a long time.	Flush the system with 2 tanks of tap water as instructed in section "Before First Use".
	The filters are expired.	Replace the corresponding filters in time.

DREO CUSTOMER CARE

06

Default 12-Month Warranty

This appliance is covered by Dreco warranty for 12 months from the date of its original purchase.

Extend Your Warranty

Extend your warranty by registering your new appliance on our website
<https://dreco.com/warranty>.

The warranty will not apply in cases of:

1. Accident, misuse, or repairs performed by unauthorized personnel.
2. Any unit that has been tampered with or used for commercial purposes.
3. Normal wear and tear of wearable parts.
4. Use of force, damage caused by external influences.
5. Damage caused by non-observance of the User Manual, e.g. connection to an unsuitable mains supply or noncompliance with the instructions.
6. Partially or completely dismantled appliances.
7. Defects caused by or resulting from damages from shipping or from repairs, service, or alteration to the product or any of its parts that have been performed by a repair person not authorized by DREO.

We can only provide after-sales service for products that are sold by DREO or DREO authorized retailers and distributors. If you have purchased your unit from a different place, please contact your seller for return and warranty issues.

FCC REQUIREMENT

Any changes or modifications not expressly approved by the party responsible for compliance could void the user's authority to operate the equipment. This device complies with Part 15 of the FCC Rules. Operation is subject to the following two conditions:

- (1) this device may not cause harmful interference, and
- (2) this device must accept any interference received, including interference that may cause undesired operation.


Note: This equipment has been tested and found to comply with the limits for a Class B digital device, pursuant to Part 15 of the FCC Rules. These limits are designed to provide reasonable protection against harmful interference in a residential installation. This equipment generates, uses, and can radiate radio frequency energy, and if not installed and used in accordance with the instructions, may cause harmful interference to radio communications. However, there is no guarantee that interference will not occur in a particular installation. If this equipment does cause harmful interference to radio or television reception, which can be determined by turning the equipment off and on, the user is encouraged to try to correct the interference by one or more of the following measures:

- Reorient or relocate the receiving antenna.
- Increase the separation between the equipment and receiver.
- Connect the equipment into an outlet on a circuit different from that to which the receiver is connected.
- Consult the dealer or an experienced radio/TV technician for help.

This equipment complies with FCC radiation exposure limits set forth for an uncontrolled environment. This equipment should be installed and operated with a minimum distance of 20cm between the radiator & your body. This transmitter must not be co-located or operating in conjunction with any other antenna or transmitter.

Model No.: DR-KWF001
Rev_1.0_CA

We're Here to Help!

 (888) 290-1688 Mon - Fri, 9:00 am-5:00 pm PST/PDT

 www.dreco.com

 support@dreco.com / ca-support@dreco.com

 Shenzhen Hesung Innovation Technology Co., LTD

 26F, Bldg A7, Creative City, Shenzhen, China



MADE IN CHINA



Intertek

www.dreo.com

Looking for help?

Contact us to get expert support.



support@dreo.com



[\(888\) 290-1688](tel:(888)290-1688)



www.dreo.com

Mon - Fri, 9:00 am-5:00 pm PST/PDT