

User Manual

Model No.: Laser Master 2

The links to download the E-copy User Manual:

<https://www.dropbox.com/s/1o76v7d1rkqcb2j/LaserMaster2.zip?dl=0>

Or: <https://ortur.tech/olm2/>

QR-code to scan and download:



Dear Valued Customer

Thanks you for making a purchase of Ortur Product, We hope you having a good experience.

Upon receiving your package, if you feel satisfied, please do us a favor to write a good review and share your experience.

If you have any question or need any help, please feel free to contact with us at our customer support ticketing system:

<https://www.ortur.tech/support>

To contact the Amazon vendors, please following the steps as below:

- Step 1: Log into your Amazon Account.
- Step 2: Go to the product listing on Amazon and click the seller name.
- Step 3: Click "Ask a Question" or "Contact the Seller" (Depending on Your Location)
- Step 4: Now follow the instructions and ask any question, that you may have concerning the product.

We are always here to serve you and provide you a satisfied customer experience.

ORTUR Customer Service Team

After COVID-19, we decided to do something to protect our environment. The earth not only belongs to human beings, but also the animals, the plants, even the microorganism and virus.

So, we are using the dropbox to save the e-copy user manual instead of the printed user manual.

Save the Paper, Save the Earth, Save the Common Home of symbiotic creatures for the harmony of all things.

Any question, feel free to contact with us at: support@ortur.tech

Dongguan Ortur Intelligent Technologies Co., Ltd.

(EN)Address: No. 1 Building, Ruijin Science and Technology Industrial Park, Changping, Dongguan 523558, Guangdong, China

(FR)Adresse: Bâtiment n° 1, parc industriel scientifique et technologique de Ruijin, Changping, Dongguan 523558, Guangdong, Chine

(DE)Adresse: Gebäude Nr. 1, Industriepark Ruijin für Wissenschaft und Technologie, Changping, Dongguan 523558, Guangdong, China

(IT)Indirizzo: Edificio n° 1, Ruijin Scienza e della Tecnologia Parco Industriale, Changping, Dongguan 523558, Guangdong, Cina

(ES)Dirección: Edificio No. 1, Parque Industrial de Ciencia y Tecnología Ruijin, Changping, Dongguan 523558, Guangdong, China



OLM-2 PARTS LIST



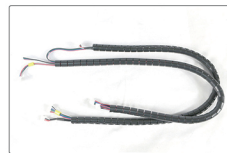
X-axis Assembly x1



X Aluminum Profile-460mm x2



Y Aluminum Profile-540mm x2



Wires



Timing Belts x2



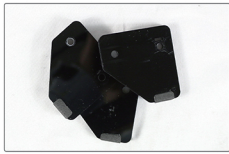
Mainboard Assembly x1



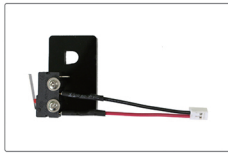
X Motor x1



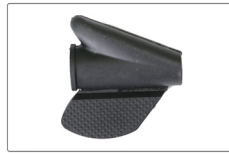
Backboard of Laser Module x1



Base Anchors x3



Y limit switch x1



Split Wire Loom Insertion Tool x1



USB Cable x1



Laser Goggles x1



Power Adapter x1



Laser Module x1



Wooden Plates for Testing x4



Acrylic Plate for Testing x1



User Manual x1



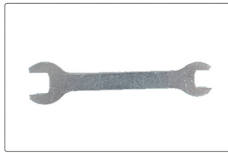
Brush x1



Cable Ties x6



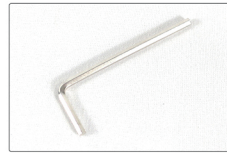
Spacers x3



Wrench x1



Corner Connectors x4



Hexagon Wrench x1



M5x25mm Screws x4



M5x10mm Screws x9



M3x8mm Screws x6



M5 Nuts x5



M5 Cap Nuts x4

Safety instructions when using the laser engraver

1. When the laser engraver is working, the operator should not leave it, just in case the materials being carved catch fire.
2. When the laser engraver is in use, wearing laser safety glasses is mandatory for the operator as well as any person in the proximity of the machine. Our Ortur Laser Master ships with a pair of goggles but additional laser safety glasses can be purchased commercially. **Goggle Requirements: WaveLength Protection 400-445nm (+-5nm), O.D.+5, L-Rating Minimum required L5**
3. Use the laser engraver in a room that can be closed by a door and ensure that neither laser beams nor stray light can penetrate through the windows.
4. While using the laser engraver, use door signs or a warning light on the door that indicates the laser engraver is in operation.
5. Make sure that there are no flammable materials near the laser engraver, we recommend the use of a fireproof pad as a work surface.
6. When operating the laser engraver, ensure that there is adequate ventilation. Engraving certain materials might produce smoke that should be evacuated by the use of a dedicated filtered Air Extractor.
7. Do not reach or touch the laser beam or use tools while machine is operating. This can result in severe burn injuries or reflection of the beam.
8. Do not let children or adolescents work alone with the laser engraver. Adult supervision is required at all times.
9. For commercial use, the use and registration of supervisory authority and the professional association is mandatory.