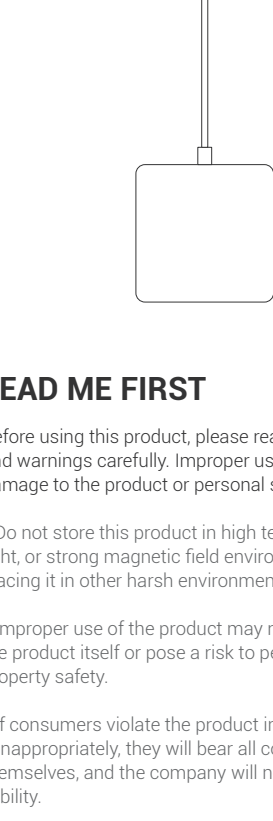


USER MANUAL

Wireless CarPlay / TV Mate Adapter



READ ME FIRST

Before using this product, please read all instructions and warnings carefully. Improper use may cause damage to the product or personal safety.

- Do not store this product in high temperature, strong light, or strong magnetic field environments, and avoid placing it in other harsh environments.

- Improper use of the product may result in damage to the product itself or pose a risk to personal and property safety.

- If consumers violate the product instructions and use it inappropriately, they will bear all consequences themselves, and the company will not assume any legal liability.

- Non-professionals are strictly prohibited from disassembling this product.

- Avoid using appliances or loads that exceed the output current of this product (the circuit will protect and have no output).

- Avoid strong physical impacts, including hitting, throwing, stepping on, or squeezing, etc.

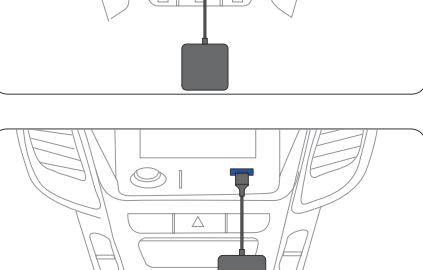
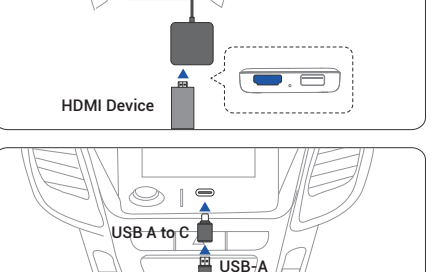
This adapter is based on car multimedia system which has build-in wired Apple CarPlay, please check if your car has Apple CarPlay.

Note: The information in this manual is subject to change without notice.

This device complies with part 15 of the FCC Rules. Operation is subject to the following two conditions:

(1) This device may not cause harmful interference;
(2) this device must accept any interference received, including interference that may cause undesired operation.

OVERVIEW



About Product

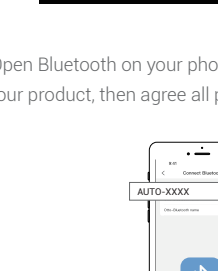
This product uses a USB cable to easily connect to the USB port of the original car, enabling the original wired CarPlay to be converted to wireless Carplay / Android Auto function And HDMI input.

It supports the connection of external HDMI devices such as TV sticks, screen mirroring devices, X-boxes, and other HD devices.

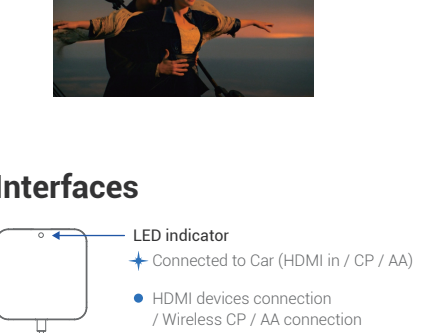
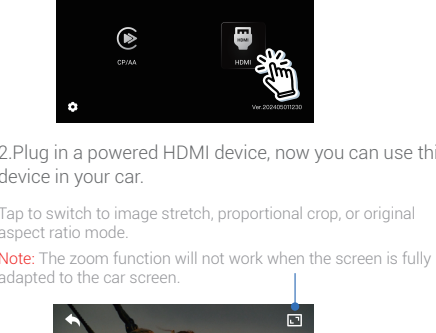
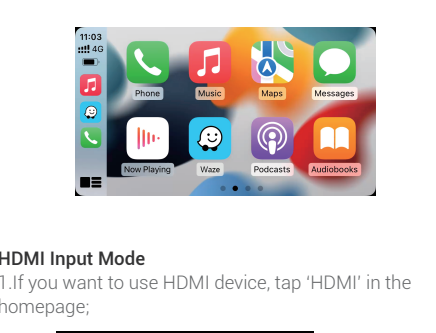
Note: When connecting an HDMI device, use the control method provided with that device (e.g., remote control).

What's in the Box

- Car TV mate Pro * 1
- USB A to C plug adapter *1
- User Manual * 1



How to Connect



Tips! There are two ports in some car, but only one port for data transmission. Please use data port.

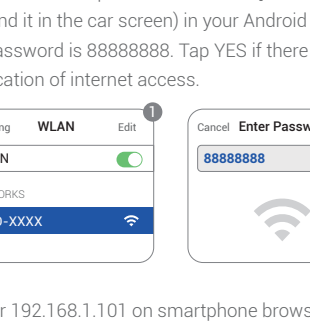
Specification

HDMI Input	Standard HDMI 1.4 Support common resolutions on the market 2K (2560*1440) 30Hz 1080P (1920*1080) 60/50Hz 720P (1280*720) 60/50Hz
Wi-Fi	802.11 a/b/g/n/ac 2.4 GHz + 5 GHz
Bluetooth	BT5.0
Connectors	USB-A, HDMI
Compatibility	Cars with OEM CarPlay
Power Input	USB 5V
Weight	45g
Product Size	58*58*14mm

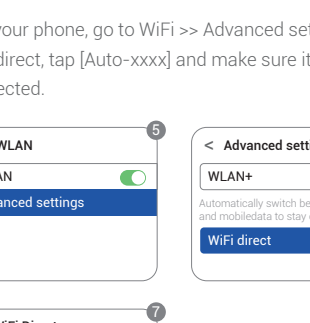
Quick Settings

Wireless CarPlay Mode

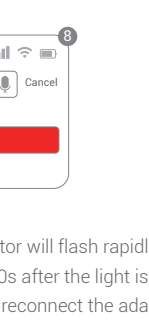
1.If you want to use CarPlay, tap 'CP/AA' in the Homepage;



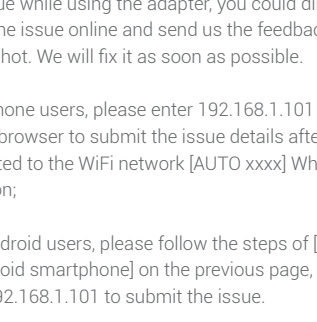
2.Then, you can see the Bluetooth name of device, connect the Bluetooth with your phone;



3.Open Bluetooth on your phone and pair the Bluetooth of our product, then agree all pop-ups.



4. Now, you will be able to use the wireless CarPlay



HDMI Input Mode

1.If you want to use HDMI device, tap 'HDMI' in the homepage;

2.Plug in a powered HDMI device, now you can use this device in your car.

Tap to switch to image stretch, proportional crop, or original aspect ratio mode.

Note: The zoom function will not work when the screen is fully adapted to the car screen.

Interfaces

HDMI port: Connect to external HDMI devices

Reset hole: This hole is for reset.

How to Upgrade your Product

Update on iPhone

• While the power on, join the adapter's WiFi network [AUTO-xxxx] and the password is 88888888. Next enter 192.168.1.101 on iPhone's browser, and tap "Update".

Update on Android Smartphone

• Connect the adapter's WiFi network [Auto-xxxx] (you can find it in the car screen) in your Android phone and the password is 88888888. Tap YES if there is a pop-up notification of internet access.

• On your phone, go to WiFi >> Advanced settings >> WiFi direct, tap [Auto-xxxx] and make sure it has connected.

• Enter 192.168.1.101 again on smartphone browser, next tap "Update".

Note:
1.The led indicator will flash rapidly while updating. Wait for more 30s after the light is always on, then disconnect and reconnect the adapter from USB port to finish the whole update.

2. Android phone interface may be different, the above flow is a rough description is a rough description.

How to Report an Issue

Any issue while using the adapter, you could directly report the issue online and send us the feedback screenshot. We will fix it as soon as possible.

• For iPhone users, please enter 192.168.1.101 on your iPhone browser to submit the issue details after connected to the WiFi network [AUTO xxxx] While the power on;

• For Android users, please follow the steps of [update on Android smartphone] on the previous page, then enter 192.168.1.101 to submit the issue.