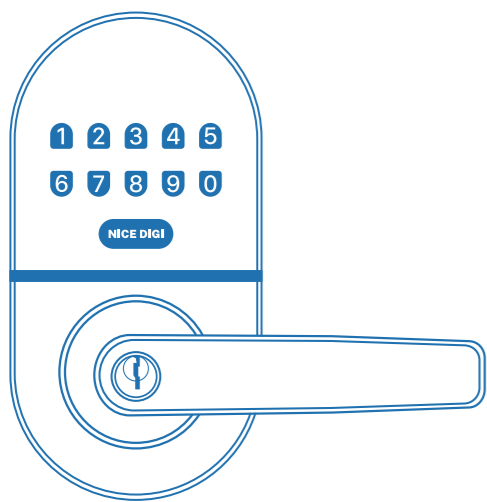


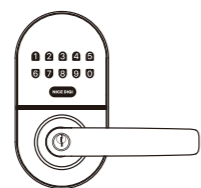
Smart Lever User Manual

Model: Z1A

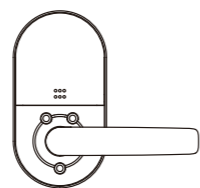
Installation Instructions



1 Packing List



Exterior Assembly * 1



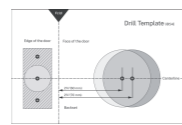
Interior Assembly * 1



User Manual * 1



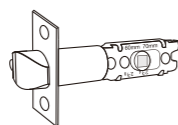
Rubber Plate * 2



Punch Diagram * 1



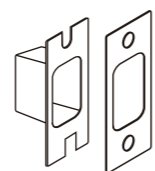
Mechanical Key * 2



Latch * 1



L Shape Allen Wrench * 1



Strike & Strike Box * 1

2 Installation

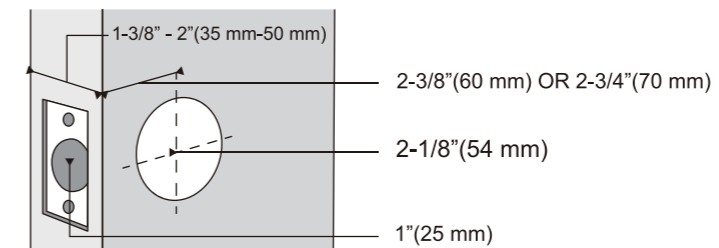
Please scan this QR code to watch the easy step by step installation video before attempting to install your Smart lock.



2.1 Preparing Door

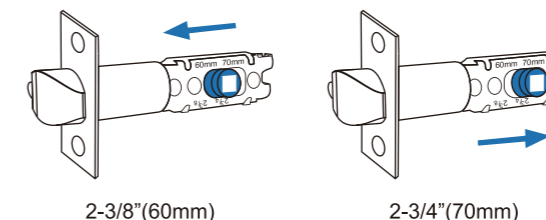
Check the door's dimensions

- Measure to confirm that the door is between 1-3/8in to 2in(35mm-50mm)thick.
- Measure to confirm that the hole in the door is 2-1/8in(54mm).
- Measure to confirm that the door is between 2-3/8in to 2-3/4in(60mm-70mm)thick.
- Measure to confirm that the hole in the door edge is 1in(25mm).



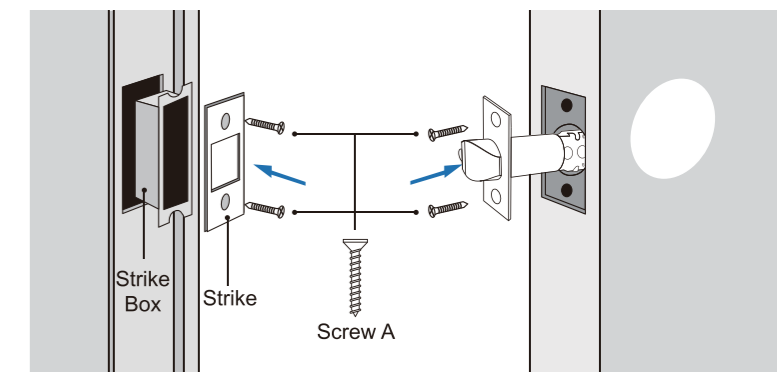
2.2 Adjust Latch Backset Length

Measure your door backset, then adjust to the corresponding latch length.



2.3 Install Latch and Strike & Strike Box

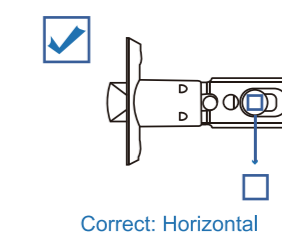
- 1 Install strike & strike box on door frame with Screw A.
- 2 Install latch into door with Screw A.



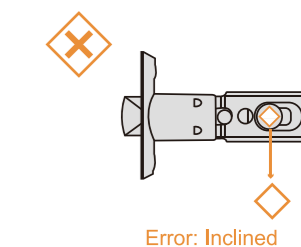
Attention

Check Latch's Status

- 1 Latch's square hole should place horizontal.
- 2 If square hole is inclined ,smart lock will get stuck when unlocked.



Correct: Horizontal



Error: Inclined

2.4 Adjust the Handles Direction

- 1 Confirm the opening direction of your door.
- 2 Adjust Handles According to Door Opening Direction.

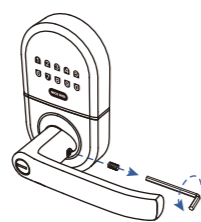
Left-Handed Door



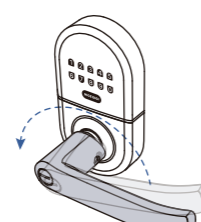
Right-Handed Door



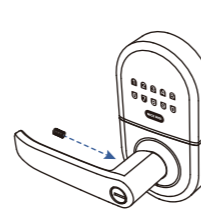
2.4.1 For Exterior Assembly



Step1 :
Loosen the screw with a 3mm Allen wrench (Included)

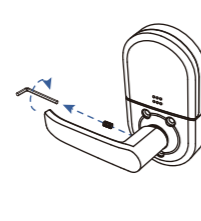


Step2:
Turn the handle to adjust the direction

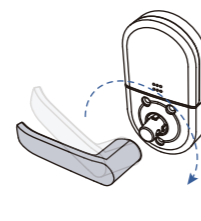


Step3:
Tighten the screw after adjusting the handle direction and complete.

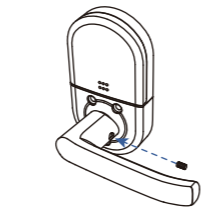
2.4.2 For Interior Assembly



Step1 :
Loosen the screw



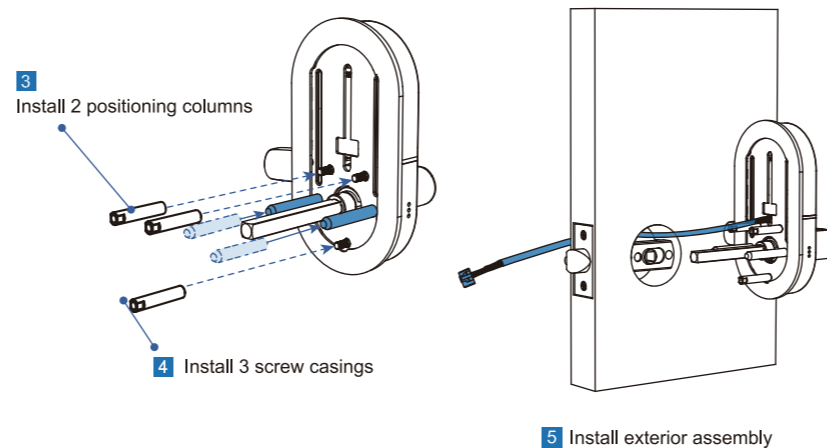
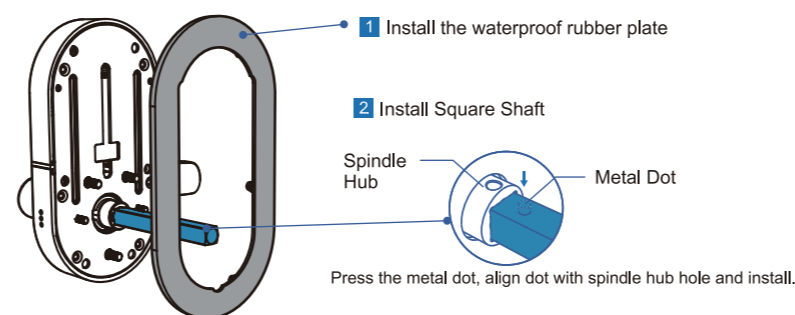
Step2:
Remove the handle to adjust the direction



Step3:
Tighten the screw after adjusting the handle direction and complete.

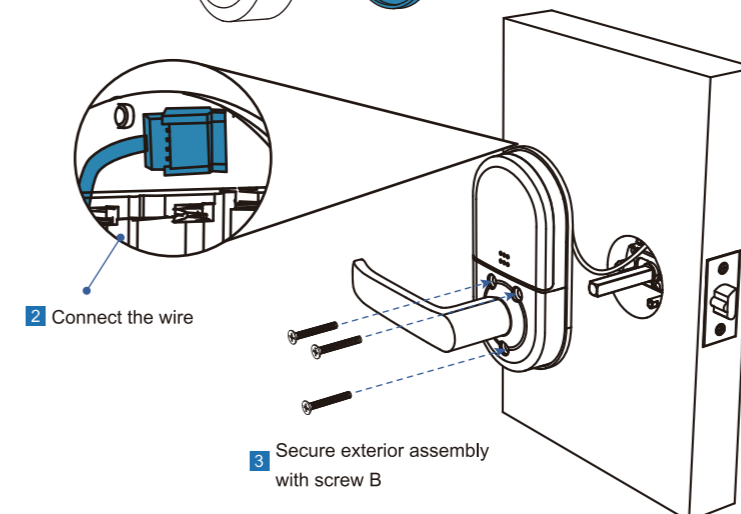
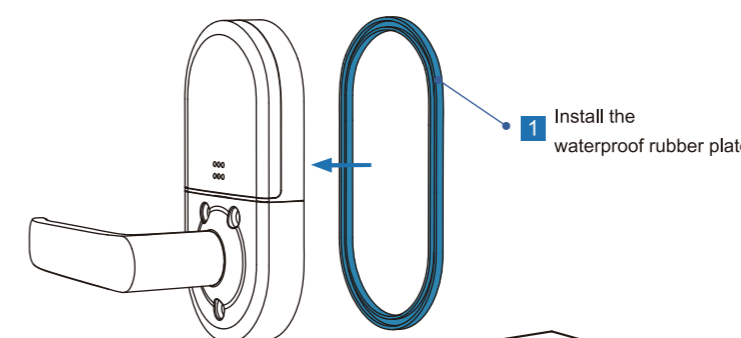
2.5 Install Exterior Assembly

- 1 Install the waterproof rubber plate to exterior assembly.
- 2 Install square shaft into spindle hub.
- 3 Install 2 positioning columns.
- 4 Install 3 screw casings.
- 5 Install exterior assembly



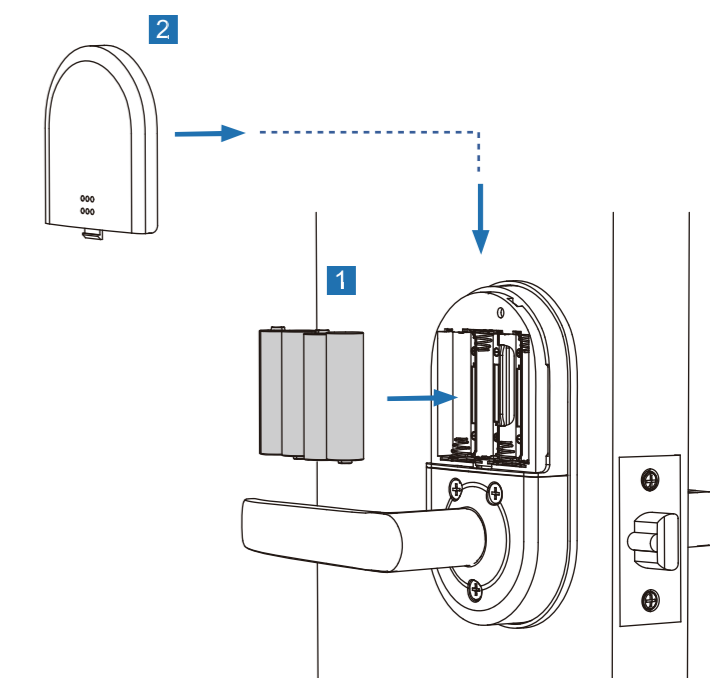
2.6 Install Interior Assembly

- 1 Install the waterproof rubber plate.
- 2 Connect the cable.
- 3 Secure exterior assembly with screw B.



2.7 Installing Batteries

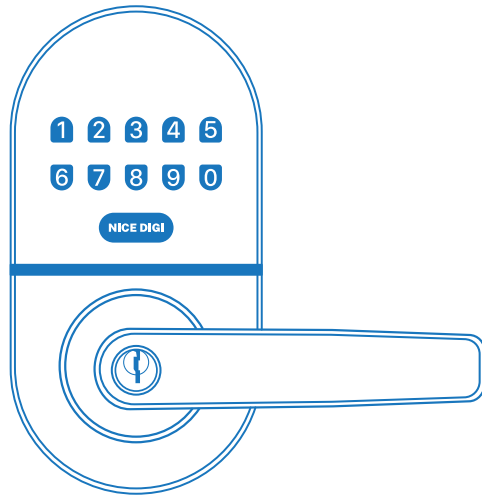
- 1 Insert 4 AA alkaline batteries.
- 2 Install the battery cover.
- 3 Installation complete.



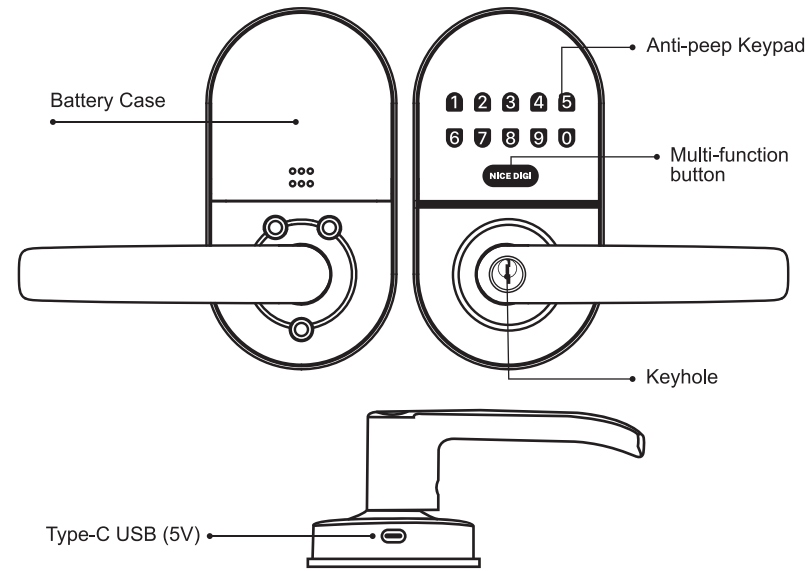
Smart Lever User Manual

Model: Z1A

Programming Instructions



1. Parts Illustrations



Battery Case

Used to insert 4 AA Alkaline Batteries.

Anti-peep Keypad

Used to enter the code and unlock from outside.

Type-C USB (5V)

Used to connect power bank to activate the lock when battery runs out. (It can't charge the battery of lock)

Keyhole

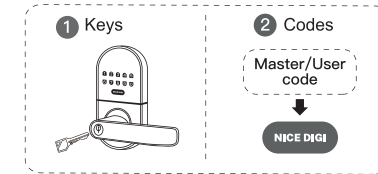
Used to insert key to unlock in emergency situations.

2. Preliminary Information

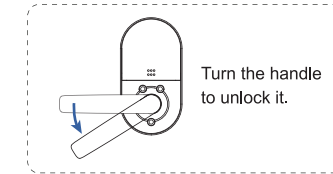
⚠ Tips: Please read this section carefully before setting to ensure proper usage.

2-1. How to use?

Unlock the door from outside



Unlock the door from inside



Lock the door from outside

Auto-lock Mode
In auto-lock mode, the lock will automatically lock after a set duration. The time you can set ranges from 5 to 99 seconds.

Manual Lock Mode
Long press "NICE DIGI" button for manual locking.

Lock the door from inside

Warn Reminder
The lock can only be locked from the inside by auto-lock. To ensure safety, please set automatic locking. Time range: 5-99s

2-2. Indicator Light Instructions:



There are three colors: Blue, Green, and Red.

Green Light: Verification successful.

Red Light: Verification failed.

⚠ **Low Battery Warning: Red light flashes after successful unlock.**

2-3. Factory Default Settings:

SETTINGS	OPERATING
Master code	12345678
Auto lock	Enabled
Silent mode	Disabled
Wrong code entry limit	10 times
Shutdown time	3 mins
Vacation mode	Disabled

2-4. Other Operations:

SETTINGS	OPERATING
Reset System	<p>Press and hold the reset button, when you hear 5 "Beeps" and the red light flashes, stop pressing, and then you will hear 2 more "Beeps" and the reset is complete.</p>
Exit Programming System	<ol style="list-style-type: none"> 1. Automatically exit after completing the setup. 2. Automatically exit after 15 seconds of inactivity. 3. During the setup process, click the "NICE DIGI" button twice in a row.

2-5. Definition:

1 Master Code

❑ Required for programming and function settings. In vacation mode, the lock can only be opened with the Master password. Please change the default master password according to the prompt before programming.

2 Auto Lock

❑ The lock will automatically lock after 5 seconds of unlocking. This function is enabled by default. You can set the delay time for auto lock between 5 and 99 seconds, and property owners/managers should keep this information confidential.

3 Wrong Entry Limit

❑ After 10 unsuccessful attempts at entering a invalid PIN code, the unit will shut down for 3 minutes.

4 Vacation Mode

❑ This is a security feature for you when you are leaving your home for vacation or long trip. Enabling vacation mode will restrict all user codes until master code is entered on keypad.

5 Silent Mode

❑ The beep sounds when pressing keypad can be muted. But you will still hear low battery and system alerts.

6 One Time User Code

❑ This code can only be used once and is automatically deleted when used.

7 Unlock with Fake Code

❑ User can prevent pin code exposure from strangers by entering random digits before after pin code.



2-6. Safety tips:

1. Master PIN Code (4-8 digits):

The default master pin code is "12345678". It is required that you change it to a code of your own before programming.

2. Storage Capacity:

Our smart lock stores data locally, rather than on the cloud, with a capacity of up to 20 passwords.

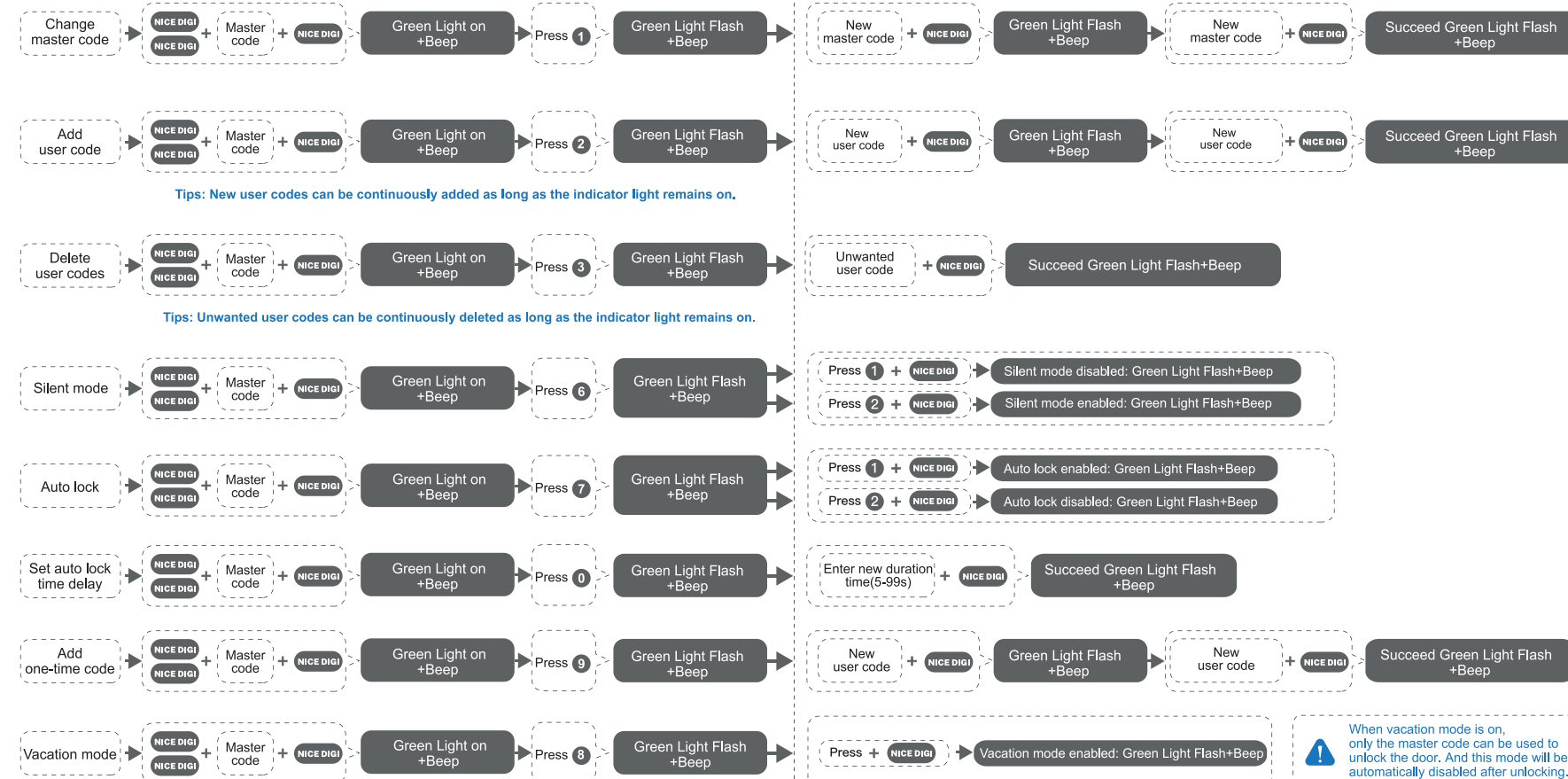
3. Protect your master password in time after you setting.

4. Restrict access to your lock's interior assembly and routinely check your settings to ensure they have not been altered without your knowledge. This lock set is designed to provide the highest standard of product quality and performance. Care should be taken to ensure a long-lasting finish. When cleaning is required use a soft and damp cloth. Using lacquer thinner, caustic soaps, abrasive cleaners or polishes could damage the coating and result in tarnishing.

3. Setup Guide

⚠ The default master code is 12345678. It's required that you change it to a code of your own before programming.

⚠ When setting is unsuccessful, the indicator light will flash red.



4. Troubleshooting

1 Installation

Questions	Answers
The latch does not operate correctly after installation.	<ul style="list-style-type: none"> ❑ Please make sure the backset on the latch is set to the proper length. (Refer to Installation Instructions). ❑ Please ensure that the internal wires are connected and that the batteries are installed. (Refer to Programming Instructions).
The latch cannot retract after depressing the handle.	<ul style="list-style-type: none"> ❑ Please check if the backset length of the latch is appropriate. (Please refer to the installation instructions). ❑ Please check if the latch is jammed. ❑ Please ensure that the latch hole is in a horizontal position. (Please refer to the installation instructions).
Fail to set up the lock.	<ul style="list-style-type: none"> ❑ Please make sure the lock is installed correctly. ❑ Please install fresh batteries and make sure the cable is connected correctly.

2 Operation

Questions	Answers
The red light flashes after the unlock is successful	<ul style="list-style-type: none"> ❑ The batteries are getting low, please replace with four new batteries for the best performance (Alkaline Batteries Only).
Keypad not responding.	<ul style="list-style-type: none"> ❑ Make sure the batteries are installed properly. ❑ Make sure the cable is well-connected to the port, and was not damaged during installation.

Questions	Answers
Master Code can not be changed.	<ul style="list-style-type: none"> ❑ Please refer to Programming Instructions to restore factory settings and reprogram all codes.
I forgot my Master Codes.	<ul style="list-style-type: none"> ❑ Perform a reset in order to erase all passwords. Once the reset is complete, all passwords will be erased and the Master code will return to the default master code 12345678.
Can not add a new User Code.	<ul style="list-style-type: none"> ❑ Make sure the Master Code has been entered correctly. ❑ The new User Code will not be accepted when the capacity is full. Try to delete any or some existing User Codes and then add new one(s) again. A User Code must be at least 4 to 8 digits.
Lockset is not able to unlock / lock by keypad.	<ul style="list-style-type: none"> ❑ Make sure you have entered the correct User Code. ❑ The battery is low if the battery indicator light keeps flashing. Please replace with four new batteries. ❑ Make sure the cable is firmly connected. ❑ Check the cable for any damage that may have occurred during installation. ❑ Make sure the batteries are properly installed. (Alkaline batteries only). ❑ Check the strike plate to make sure it is properly aligned and clear so the bolt can freely move in the hole.
How to operate the lockset in darkness?	<ul style="list-style-type: none"> ❑ Press any button to activate the lockset back light.

5. Technical Support.

If you have any questions about our product, please reach us by email at

support@nice-digi.com