



# Wireless Video Doorbell User Manual

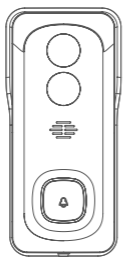
# English

1. Package Contents .....	1
2. Meet the Doorbell.....	2
3. Meet the Chime .....	3
4. Connect App.....	3
5. Doorbell Installation .....	4
6. Select Location.....	5
7. Connect the Chime.....	5
8. Installation & Connection Video .....	6
9. FAQs .....	6



Scan QR code to activate **3** Years Warranty  
or Send your order number to  
[admin@boifun.net](mailto:admin@boifun.net).

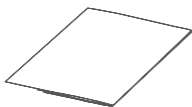
# 1. Package Contents



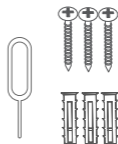
Video Doorbell



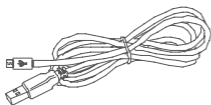
Indoor Chime



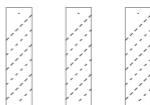
User Guide



Screws & Tools

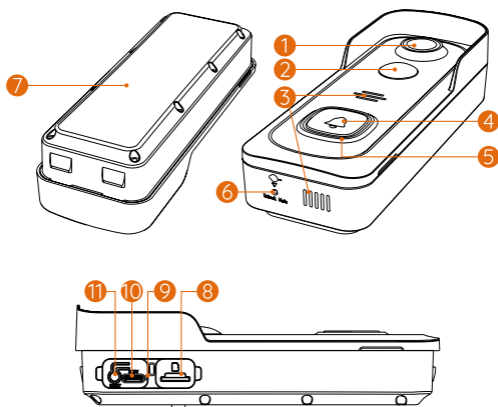


USB Cable



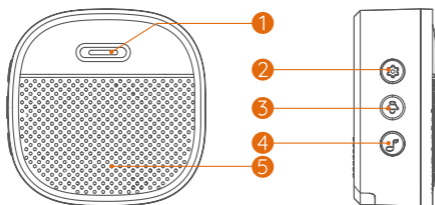
Adhesive Tape

## 2. Meet the Doorbell



1	Lens	2	PIR
3	Speakers	4	Doorbell Button / Power Button
5	LED Indicator	6	Anti-Theft Switch
7	Built-In Battery	8	Micro-SD Card Slot
9	Charging Indica	10	Type-C Charging Port
11	Reset Button		

### 3. Meet the Chime



1	LED indicator	2	Reset Button
3	Volume Control	4	Ringtone
5	Speaker		

### 4. Connect App

#### 1. Download the App

Scan the QR code to download the app, or search for "BoifunCam" in the Apple App Store or Google Play Store.



Download the APP



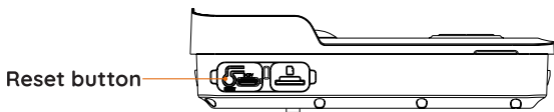
Boifun Cam

#### 2. Pairing Devices

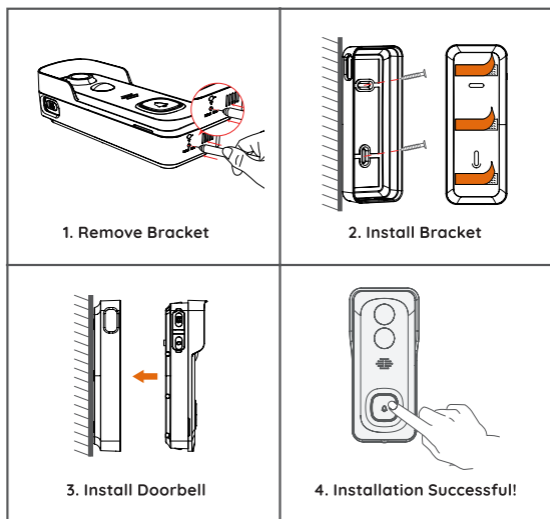
Please follow the onscreen instructions to complete the initial registration and log in. Click "Add Device" select the "Smart Doorbell" to add device. Then follow the phone prompts to continue connecting.

**Please note:** The doorbell only supports 2.4GHz Wi-Fi (it does not support 5GHz Wi-Fi).

Pairing is successful when you hear the audio cue and see the power light turn blue.



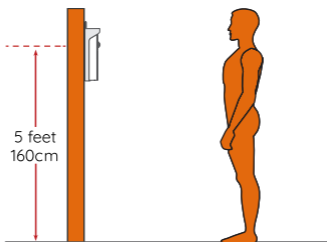
## 5. Doorbell Installation



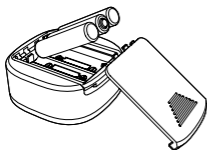
**Note:** Please fully charge (about 8 hours) before the first use.

## 6. Select location

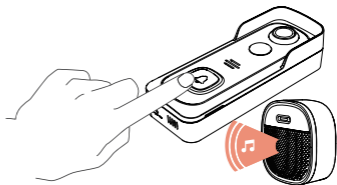
It is recommended to mount your doorbell at least 5 feet (160 cm) above the ground for the best viewing angle and optimal motion detection performance.



## 7. Connect the Chime



1. Power on the chime



2. Press the doorbell button  
Press the doorbell button, and the Chime will sound to react.

## 8. Installation & Connection Video



Scan the QR code above to watch detailed installation and connection videos.

If you have any questions, you can contact us anytime via email: [admin@boifun.net](mailto:admin@boifun.net).

## 9. FAQs

**Q1:** Why must the phone be connected to 2.4GHz Wi-Fi when setting up the doorbell?

**A1:** Most routers have two frequency bands: 2.4GHz and 5GHz. 2.4GHz offers stronger signal penetration, while 5GHz provides faster network speeds. Stronger penetration is more suitable for doorbell transmission. Therefore, when setting up, ensure your phone is connected to the 2.4GHz Wi-Fi network.

**Q2:** Why did I fail to set up Wi-Fi for the doorbell?

**A2:** Possible reasons include:

1. During the setup process, the phone must be connected to 2.4GHz Wi-Fi. If it is connected to 5GHz Wi-Fi, the setup will fail.
2. Weak Wi-Fi signal. Try placing the doorbell closer to the Wi-Fi router during setup.
3. Incorrect Wi-Fi password. Check if there are special characters in the password or if the network uses special encryption.

**Q3:** Why do I sometimes not receive a notification when someone is in front of the doorbell?

**A3:** Possible reasons include:

1. The person in front of the camera remains still, or strong sunlight shines directly on the camera. This can affect motion detection performance. It is recommended to slightly tilt the camera during installation.
2. Increase the sensitivity of motion detection in the app settings.

**Q4:** How can I improve battery life performance?

**A4:** Tips to extend battery life include:

1. Set the recording time to 10–20 seconds, which is usually sufficient for doorbell needs.
2. It is recommended to lower the "Motion Detection" sensitivity or enable the "Human Motion Detection" function.
3. If the doorbell faces a main road, adjust its angle to avoid unnecessary activations.

**Note:** Once fully charged, the doorbell battery can last 1–2 months. Battery life may decrease in low temperatures or with frequent motion detection. It is recommended to fully charge the battery before use.

**Q5:** Can we have two or more doorbells at the same residence?

**A5:** Yes. You can add more than one doorbell at the same residence, and you can also add multiple chimes to a single doorbell.

**Q6:** Why does the chime sometimes not ring?

**A6:** Possible reasons include:

1. The chime battery is low or dead, which can result in a weak or lost signal. It is recommended to replace the chime battery every 3 months.
2. The doorbell and chime are disconnected. To reconnect, place the chime next to the doorbell and press and hold the "Reset" button on the chime for 3 seconds. When the indicator light changes from red to blue, re-pairing is successful.

If you encounter any other issues, please email your order details and the problem to [admin@boifun.net](mailto:admin@boifun.net).