

STEAM CLEANER

USER GUIDE



Catalog

FAQ	3-5
Quick Start Guide	6-7
Technical Specification	8
Accessory Installation	9-11
Window Wiper Installation	12
Recommended Usage Areas	13-24
Disclaimer	25-27
Warranty	29-30



Visit Our Youtube Vedio Guide

There are detailed video instructions, you can scan the QR code or visit the website to watch the video.



Website: www.youtube.com/channel/UC2-T6CGVjmHeArRHIB11fLw

FAQ

Question1: What's the highest temperature that this steam cleaner can achieve?

The internal temperature of our steam cleaner can reach 230°F (110°C) and the steam comes out at a temperature of 212°F-221°F (100-105°C). For the sake of safety, the designed temperature of the steam cleaner can only reach 230°F (110 °C) to avoid damage in high temperature. Deep cleaning is not recommended because the cleaning at the designed temperature of 230°F (110°C) can secure personal safety when eliminating the stains.



Note: For better using experience, it is recommended that the cleaner is always plugged in when using.

Question2: If I want to add water again after use, why can't the safety cap be opened?

FAQ



Unplug First



Fully discharge the residual steam and wait red spot sinks down



Open the lid



Add water into the steam cleaner

Question3: How to add water?

1. Fill clean water into the measurement cup up to the marking no more than 280ML(9.46OZ).
2. Fill in the water into the boiler with the funnel without exceeding 280ML(9.46OZ) of water.
3. Plug the safety cap firmly by clockwise rotating



CAUTION:

For the sake of safety, you shall wait for 3-5 minutes for the safety cap to cool down and then you can unplug the safety cap.

Question4 : Why did the accessories parts fall off during cleaning after being stuck in?

1. Please let the alignment of accessories focus to the product bayonet.
2. Push in the accessories part you need to clean.
3. Twist it to the left side.
4. After, you can enjoy your steam cleaner with accessories fully twisted in.

Question5 : Does the steam cleaner not stressful enough when using?

First of all, please check whether the safety cap is tight, if it is not tight, it may cause insufficient pressure. And we do not recommend customer using the steam cleaner without tightening or it may get burned.

Question6 : After attach the accessories and add water into the water tank and heat up to use, the steam cleaner is air leak, why this happen?

In this case, please press the "ON/OFF" Button firstly, after pressing once, the air leak issue will disappear so it can be used. If you still have this situation after pressing, please contact our after sale customer service E-mail: rev@vippuls.com, we will help you solve the problem.

Question7 : Who could I to contact in case of my accessory damage?

You can contact our customer service Email: info@puetzgolf.net

Quick Start Guide



1 . Unplug the safety cap;



2 . Add about 280ML(9.46OZ)
of water with a funnel and
measuring cup;



3 . Plug the safety cap;



4 . Install the accessories;
Twist it and Start to Use.



5. Plug the power cord and wait 3-4 minutes to warm up;



6. When the red LED has changed to disappear, you can use the steam cleaner ;



7. You can use to clean places where necessary.

Technical Specification

Model:	WHL-603	Heating Time:	3-4 minutes
Voltage/Frequency:	AC 110-120V, 50/60 Hz	Usage Time:	8-12 minutes
Rated Power:	900-1050W	Flow Rate:	28 g/min
Water Tank Capacity:	350ML(11.83OZ)	Steam Pressure:	0.26-0.32 Mpa



Accessory Installation



Twist it and
Start to Use.



- 1 Attach Fabric-Cleaning Accessory/Use to Clean Fabric & Clothes or Other Places



- 2 Attach Glass-Cleaning Accessory/Use to Clean Windows or Other Places

Accessory Installation



Twist it and
Start to Use.



3 Attach Round Brushes/Use to Clean Sofa, Bed or Other Places



Twist it and
Start to Use.



4 Attach Bent Nozzle/Use to Clean Kitchen Furniture or
Other Places

Accessory Installation



Twist it and
Start to Use.



5 Attach Cone-Shaped Nozzle/Use to Clean Toilet or Other Places



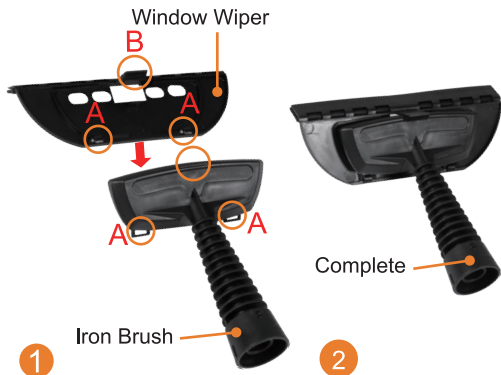
Twist it and
Start to Use.



6 Attach Extended Nozzle/Use to Clean Floor Gap & Wall Cracks or Other Places

Window Wiper Installation

The window wiper can be used to clean windows, flat and smooth flooring.



Installation: First, hook the lower mounting clips of the window wiper (A) onto the lower edge of the steam iron and then clip the upper mounting clip (B) into the upper edge of the steam iron.

Removal: Push the upper window wiper clip (B) forwards and pull the wiper away from the steam iron. Unfasten the lower clips (A) and remove the window wiper.

Recommended Usage Areas

Brass Brush

Brass Brush for stubborn stains on brush-resistant surfaces.



Micro-wave oven



Stove/Stove Vents



Oven



Rubber floor mat

Recommended Usage Areas



BBQ grill



Air fryer



Wheel

Recommended Usage Areas

Round Nylon Brush

Nylon bristles scrub tough messes.



Kitchen sink



Sofa



Mattress



Carpet

Recommended Usage Areas



Cup holder



Upholstery



Car seat



Shower tub



Grout



Shoes

Recommended Usage Areas



Bathroom gap



Bathroom tiles



Refrigerator
freezer



Wooden
cabinet



Toilet
seat hinge



Chair
(diningchair/recliner)

Recommended Usage Areas



Narrow places
for faucet handles

Jet Nozzle

Dirt, grime, grease, dried on or stuck on



Jewelry

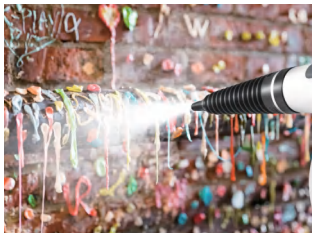


Messes

Recommended Usage Areas



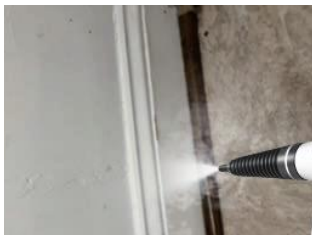
Golf clubs



Old gum



Ceiling fans



Tight crevices



Narrow spaces



Wallpaper removal

Recommended Usage Areas



Consoles, Dashboards
and Center Consoles



Automotive interior



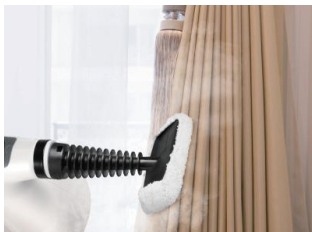
Dog dirty place

Recommended Usage Areas

Fabric Steamer

(wide nozzle + cloth)

De-wrinkle and refresh clothing, fabric, upholstery and more.
The cloths are washable and reusable.



curtain



Disinfection
(strain/pillow quilt)

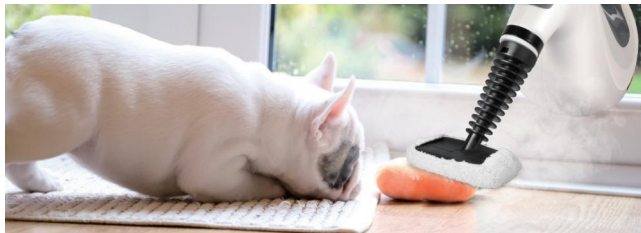


clothing



baby

Recommended Usage Areas



pet toy

Steam Squeegee

(wide nozzle + window squeegee)

Clean windows, mirrors, shower walls, and any other non-porous, solid, flat surfaces in the home.



shower walls
and doors



kitchen
countertops

Recommended Usage Areas



glass
cooktops



Windows



marble tables



mirrors



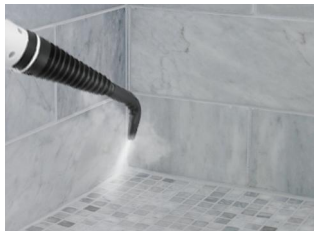
glass

Recommended Usage Areas

Steam Squeegee

(wide nozzle + window squeegee)

Clean windows, mirrors, shower walls, and any other non-porous, solid, flat surfaces in the home.



shower walls
and doors



glass
cooktops



kitchen
countertops

Disclaimer



- ◆ Our steam cleaner is corded electric product, please be aware of the following.
- ◆ It is forbidden to leave the product for a long time when it is under the working condition. The seller does not take any responsibility for any damage arising from failure to comply with this product guide.
- ◆ When using the steam cleaning machine, you should always follow the basic precautions to reduce fire, electric shock and other hazards include: the plug must be inserted into the 110V-120V circuit. Do not use if there is no matching circuit. You can consult an electrician before using the product if you are unsure whether the circuitry in your home meets this specification. In case of violation of this specification may lead to fire, overheating, malfunction and other hazards. The seller does not take any responsibility for any damage arising from failure to comply with this product guide.
- ◆ Do not use extension wires, arresters, timers, circuit breakers or use the same socket as other appliances in violation of this specification. In case of violation of this specification may lead to fire, overheating, malfunction and other hazards. The seller does not take any responsibility for any damage arising from failure to comply with this product guide.

Disclaimer

- ◆ When the steam cleaning machine is not operated, please be sure to unplug the power supply before leaving. In case of violation of this specification may lead to fire, overheating, malfunction and other hazards. The seller does not take any responsibility for any damage arising from failure to comply with this product guide.
- ◆ Do not use under quilt, mattress or cushion when using steam cleaning machine. In case of violation of this specification may lead to fire, overheating, malfunction and other hazards. The seller does not take any responsibility for any damage arising from failure to comply with this product guide.
- ◆ The elderly and children must be very careful when using and must used with adult guidance. The seller does not take any responsibility for any damage arising from failure to comply with this product guide.
- ◆ Do not place the steam cleaner near the bathtub or other water container. The seller does not take any responsibility for any damage arising from failure to comply with this product guide.
- ◆ The power cord of the steam cleaner should be kept away from other equipment or channels without tripping. The seller does not take any responsibility for any damage arising from failure to comply with this product guide.
- ◆ Please keep the plug dry, do not plug the cable in when the socket has water stains. The seller does not take any responsibility for any damage arising from failure to comply with this product guide.

Disclaimer

- ◆ Steam cleaning devices can only be used in the operating environment in accordance with this manual. Fire and electric shock hazards may occur in any other use or place. The seller does not take any responsibility for any damage arising from failure to comply with this product guide.
- ◆ Do not attempt to repair, modify or disassemble this product. The seller does not take any responsibility for any damage arising from failure to comply with this product guide.
- ◆ Do not use it in high temperature or it will cause explosion. Do not approach the fire source. Do not use it if there is a problem with the cable after receiving the goods, or it will cause explosion.
- ◆ Please use the product according to the instructions, the seller does not take any responsibility for any damage arising from failure to comply with this product guide.



STEAM CLEANER

Limited 24 Months Warranty

Subject to the EXCEPTIONS AND EXCLUSIONS identified below, upon receipt of the product will repair or replace (with new re-manufactured components or products), at our option, free of charge from the date of purchase of the original purchaser.

We offer a Warranty of one year for any defective or malfunctioning part.

See information below on If your product should require service.

This warranty does not apply to fans or routine maintenance components such as accessories like Window/Door Cleaning Tool, Spray Cup with Round, brushes and others. Damage or malfunction caused by negligence, abuse, neglect, unauthorized repair, or any other use not in accordance with the User's Guide is not covered.

If you need information about repairs or replacement parts, or if you have questions about your warranty, contact our Consumer Services.

Warranty Steam Cleaner

The warranty offers you specific legal rights. And you also have other rights which may vary from state to state. If you need additional instruction regarding this warranty or have any questions regarding what it may cover, please contact our Consumer Services by E-mail, as described below.

Website and E-mail

 rev@vippuls.com



FOLLOW US ON



& watch out for our monthly draw!



+1(808)400-5008



8:00am-5:00pm PST

